

Back to School Sale

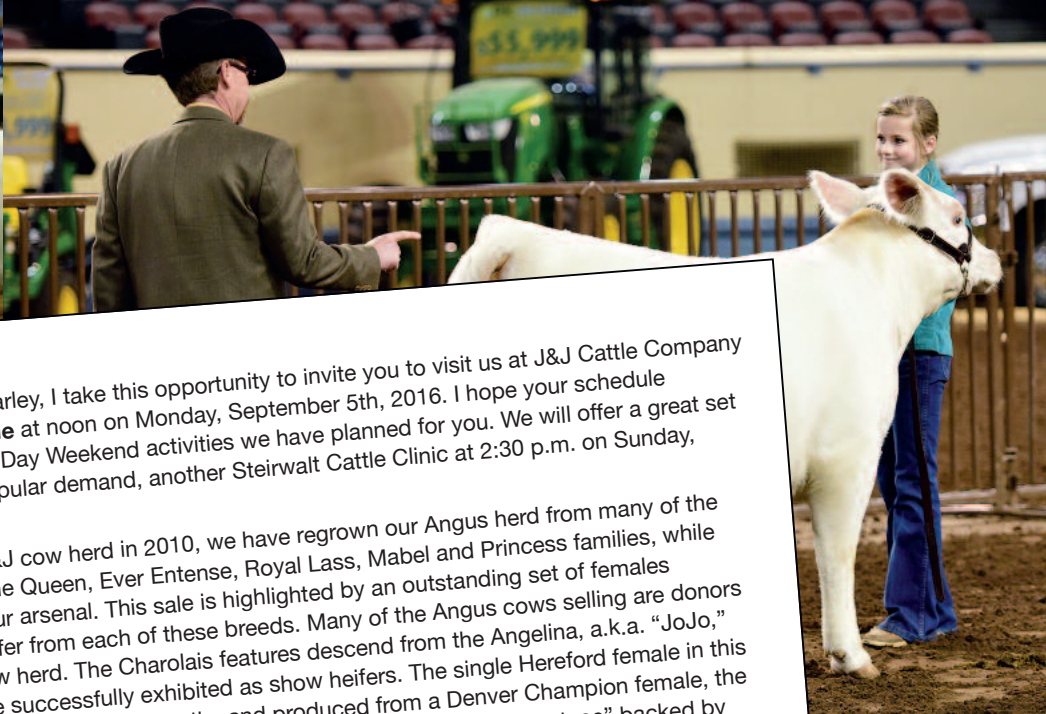
Labor Day 2016

12 noon

Monday, September 5th

Orlando, Oklahoma

J&J
CATTLE CO.



Dear Friends & Fellow Cattlemen:

On behalf of Brenda, Sydney and Charley, I take this opportunity to invite you to visit us at J&J Cattle Company and attend the **"Back to School" Sale** at noon on Monday, September 5th, 2016. I hope your schedule permits you to take part in the Labor Day Weekend activities we have planned for you. We will offer a great set of cattle, great food and, back by popular demand, another Steirwalt Cattle Clinic at 2:30 p.m. on Sunday, September 4th.

Since the dispersal of the original J&J cow herd in 2010, we have regrown our Angus herd from many of the original J&J cow families, such as the Queen, Ever Entense, Royal Lass, Mabel and Princess families, while adding Charolais and Hereford to our arsenal. This sale is highlighted by an outstanding set of females representing the best we have to offer from each of these breeds. Many of the Angus cows selling are donors from which we have re-built our cow herd. The Charolais features descend from the Angelina, a.k.a. "JoJo," females or are heifers our girls have successfully exhibited as show heifers. The single Hereford female in this sale is sired by a Denver Champion bull, Times A Wastin, and produced from a Denver Champion female, the great Harley Henrieta Z10. Regardless of breed, these females offer strong "on-foot phenotype" backed by some of the greatest cow families in their respective breeds.

We are also pleased to include the complete dispersion of our longtime friend John Freeman's Black Gold Angus herd. John is not only a great guy and highly successful businessman but also an excellent Angus breeder! John's cows are cataloged as Lots 31 through 45 of this catalog.

Thanks very much for your interest in our program and for taking the time to look through this catalog. If I can answer any questions or you would like to discuss anything you see in the catalog, please give me a call or stop by at your convenience.

I also would like to say "thank you" to Jake Green, Chase Reed and Ben Kiner for all of their hard work in getting this set of cattle ready for the sale. You guys are the best!

Finally, I want to congratulate our past customers — not only those who have had so much success with the cows purchased from the original J&J herd, like the Queens, Bardolenas and Mabels, but especially the Junior exhibitors and breeders who have enjoyed success with the halter prospects purchased out of our online sales over the past two years. Many of these are featured on the inside back cover of this catalog. As many of you are aware, since Sydney and Charley became old enough to show cattle, we have been pretty active showing and have had the great fortune to make many new friends and meet families while exhibiting cattle across the U.S. At J&J, we believe in the cattle business and the benefit of junior shows. We look forward to seeing you Labor Day weekend and also encourage you to attend the Oklahoma Angus Association's Gathering Sale on Saturday, September 3rd.

Most sincerely,

Mark

Mark Johnson
405.880.1902

P.S. The cattle are all ready for viewing at our sale headquarters at your convenience. Stop in anytime!





"Back to School" Sale Labor Day 2016

12 noon, Monday, September 5th
Orlando, Oklahoma

62 Lots

ANGUS • CHAROLAIS • HEREFORD • CROSSBRED

Spring Show Heifer & Steer Prospects • Pregnancy • Fall-Calving Cows • Spring Bred Cows & Heifers • Fall Open Heifers

Including the complete dispersion of Black Gold Angus, Centerton, Arkansas — Lots 31-45

Accommodations

Holiday Inn Express & Suites, Perry, OK—580.336.5050
LaQuinta Inn & Suites, Guthrie, OK—405.293.6000
Holiday Inn Express & Suites, Guthrie, OK—405.293.6464
LaQuinta Inn & Suites, Stillwater, OK—405.564.0599

Sale Manager

Jeremy Haag—816.516.1309



Sale Staff

Matt Sims, Auctioneer—405.641.6081
Jeff Mafi, *Angus Journal*—816.344.4266
Doug Paul, *The Stock Exchange*—405.820.3982
Chisolm Kinder, *Oklahoma Cowman*—405.747.4683
Juston Stelzer, Stelzer Services—817.992.7059

Guest Consignors

John Freeman—479.366.3409
Terry Lockhart—479.462.1323

Absentee Bids

Please contact the owners or any member of the sale staff or sale day contacts if you will not be able to attend the sale. Online bidding will be available to registered bidders through LiveAuctions.TV



Brad Fahrmeier • 816.392.9241



Mark & Brenda Johnson, Sydney & Charley
22755 N. Douglas Blvd., Orlando, OK 73073
405.880.1902
mark@jandjcattle.com, E-mail

Please stop by the ranch anytime.

Videos of all halter broke heifer calves will be available for viewing by Monday, August 22nd, at

www.jandjcattle.com

Sale Terms and Conditions

Registered cattle will sell under the Suggested Terms and Conditions of their respective breed association. All cattle are to be paid for by the purchaser during or immediately after the sale. Buyers must be sure to furnish the sale clerk complete information for the transfer of registration certificates. Ownership will not be transferred until cattle are paid for in full.

Herd Health

All cattle will be accompanied by interstate health charts for immediate shipment. Each animal becomes the purchaser's risk after it is sold.

Liability

Announcements made sale day from the auction block will take precedence over printed material. All persons who attend the sale do so at their own risk. Neither J&J Cattle Co. nor any individual associated with the sale assumes liability, legal or otherwise, for accidents or loss of property.

EPDs printed in the catalog were current at catalog press time. Up-to-date numbers can be viewed on the individual breed websites.

Labor Day Weekend Schedule of Events

SATURDAY, SEPTEMBER 3

Oklahoma Angus Gathering Sale, Prague, OK

SUNDAY, SEPTEMBER 4

Cattle on display at J&J Cattle
2:30 p.m. - Stierwalt Show Cattle Clinic

MONDAY, SEPTEMBER 5

8:00 a.m. - Cattle on display
11:00 a.m. - Lunch, sponsored by LNC
12:00 noon - "Back to School" Sale

Workouts for judging teams will be hosted at 7:00 a.m. Saturday, August 27th, and Saturday, September 3rd.

Call Mark for details.

✓ Elite Angus Show Ring Genetics



J&J Blackcap 406

angus | dob: 1/18/16 • aaa: reg. pending • tattoo: 406

+EXAR Totally Tuned 71281

J&J Avant Garde 211

+Limestone Ever Entense S292

Dameron First Class

EXAR Blackcap 2876

EXG Blackcap R054 R3

EXAR Sudden Impact 1537

EXAR Arkdale Pride 1001

#BR Midland

+Shadybrook Ever Entense 491G

EXG RS First Rate S903 R3

Dameron Northern Miss 3114

EXAR Sudden Impact 1537

EXG Blackcap N145 R3

Sire EPDS: CED +10, BW +1.0, WW +45, YW +80, MILK +30, MRB +.40, REA +.36, \$B +84.43

Dam EPDS: CED +0, BW +4.0, WW +62, YW +95, MILK +32, MRB +.23, REA +.19, \$B +107.63

• Sells open.

J&J
CATTLE CO.

The females presented as Lots 1, 1A and 1B are unique. They offer a little perspective into how we have regrown our Angus herd at J&J Cattle Company.

In 2013, we purchased Blackcap 2876 from the EXAR Honor Roll Sale to be Sydney's first National Junior Angus Show heifer. She made a great show heifer, winning her class at the 2014 NJAS in Indianapolis, and has proven to be an even better cow, as evidenced by the two January calves selling as Lots 1 and 1B.

Lot 1 is sired by a bull we have used heavily at J&J in the past few years, J&J Avant Garde 211. He is the product of mating EXAR Totally Tuned to one of the greatest, most productive, fertile and problem-free cows we have ever worked with, LS Ever Entense S292. His flushmate sister, J&J Ever Entense 209, was Reserve Champion Angus Female at the 2013 Tulsa State Fair Junior Show and is now serving as a foundation donor. 209 is the donor dam of a couple of the heifers you can see pictured on the inside back cover of this catalog which sold in our 2015 "Back to School" Sale.

Lot 1B's sire, SAV Brilliance, is another bull who has done an excellent job for us.

Both Lots 1 and 1B came out a raised calf program where they were weaned early so they are still a little green, but both have big time potential. These females are featured as Lot 1 for a reason...great halter prospects and tremendous long-term earning potential. Check 'em out!



J+J Blackcap Family

...the Lot 1 females



1A | EXAR Blackcap 2876

angus | dob: 9/22/12 • aaa: +17327838 • tattoo: 2876

EXG RS First Rate S903 R3
Dameron First Class
 Dameron Northern Miss 3114

EXAR Sudden Impact 1537
EXG Blackcap R054 R3
 EXG Blackcap N145 R3

#EXAR Lutton 1831
 Rafter S Blackcap P909
 +Dameron P V F Raptor 702
 #+Dameron Miss 550
 #+Northern Improvement 4480 GF
 +B L R Blushing Pride 9097
 +EXAR Anchorage 9479
 R3 S A V Blackcap 0193

GE-EPDs: CED +0, BW +4.0, WW +62, YW +95, MILK +32, MRB +.23, REA +.19, \$B +107.63
 The dam of Lots 1 and 1B, Blackcap 2876, has been worked three times in IVF, producing eight embryos.
 • Sells open, ready to flush.

1B | J&J Blackcap 106

angus | dob: 1/2/16 • aaa: +18494807 • tattoo: 106

#+S A V Bismarck 5682
#S A V Brilliance 8077
 S A V Blackcap May 5270

Dameron First Class
+EXAR Blackcap 2876
 EXG Blackcap R054 R3

#+G A R Grid Maker
 S A V Abigale 0451
 #S A V 8180 Traveler 004
 #+S A V May 2420
 EXG RS First Rate S903 R3
 Dameron Northern Miss 3114
 EXAR Sudden Impact 1537
 EXG Blackcap N145 R3

EPDs: CED +5, BW +2.0, WW +56, YW +91, MILK +29, MRB +.34, REA +.46, \$B +99.86
 • Sells open.



✓ J&J Queen Family

***Selling the buyer's choice of four December sisters
sired by BC Lookout and produced by J&J Queen 590.***



J&J Queen 414 likely needs no introduction. She has produced a long list of great Angus, SimAngus and MaineTainer calves that have been winners and money makers for a list of people too numerous to mention.

414's embryo sib, **J&J Queen 590**, was the high selling fall-born Angus female in our inaugural J&J sale in 2006. As we worked the country to re-stock our cow herd, we had the good fortune to purchase the embryos resulting in the Lot 2 heifers from Madison Chaney. *Thank you, Madison!*

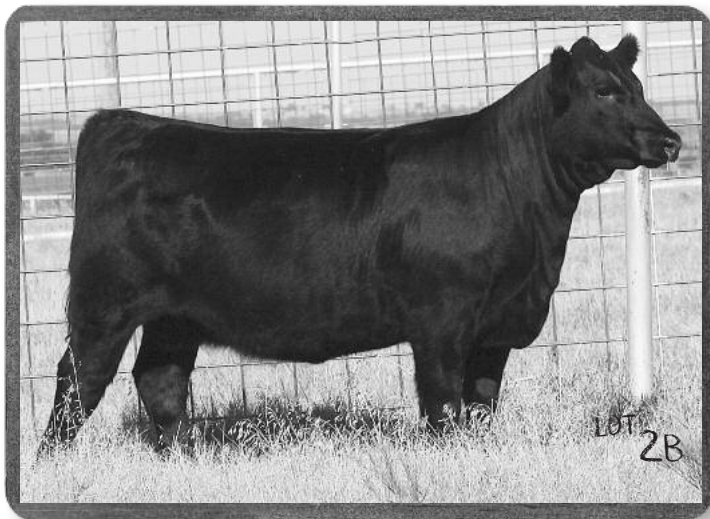
The four flush sisters being offered as buyer's choice Lot 2 bring to the table all the same ingredients that have made the Queens such powerful cows and show heifers...big ribbed and open structured, added width and muscle, high, wide pin setting, tremendous hind leg and with a quiet disposition that is always of value.



J&J Queen 414

Full sister to dam of Buyer's Choice Lots 2A-2B-2C-2D

...Buyer's Choice Lot



J&J Queen Family ...Lot 2 Buyer's Choice

O C C Legend 616L
#+B C Lookout 7024
 Gibbet Hill Mignonne E37

#O C C Emblazon 854E
 O C C Blackbird 632J
 #Papa Equator 2928
 Gibbet Hill Mignonne TR 29

#+Northern Improvement 4480 GF
+J&J Queen 590
 +J&J Queenie 9206

#TC Stockman 365
 Blackcap of R R 5367
 #+A&B Yukon 7150
 C&C Queen 41

Sire EPDs: CED +5, BW +2.2, WW +49, YW +80, MILK +14, MRB +.60, REA +.87, \$B +113.30
 Dam EPDs: CED +6, BW +2.5, WW +46, YW +82, MILK +18, MRB +.29, REA +.10, \$B +118.03

• Sell open.



2A

J&J Queen 564

angus | dob: 12/27/15 • aaa: +18504805 • tattoo: 564

2B

J&J Queen 565

angus | dob: 12/28/15 • aaa: Reg. Pending • tattoo: 565

2C

J&J Queen 567

angus | dob: 12/30/15 • aaa: Reg. Pending • tattoo: 567

2D

J&J Queen 569

angus | dob: 12/31/15 • aaa: Reg. Pending • tattoo: 569



Chase Reed & Jake Green

None better than Chase and Jake. Thanks for all you do!

✓ JoJo Charolais Features



"JoJo"
3R's Angelina 343A ET
Granddam of Lots 3 & 4
buyer's choice pregnancy

The females featured as the Lots 3 and 4 donors have been favorites since their arrival at J&J. They have both already achieved great success in the show ring, finishing as the Reserve Grand and Third Overall Bred-and-Owned Heifers at the 2016 AIJCA Junior National this summer. Their dam, 3R's Angelina 343, a.k.a. "JoJo," was the 2014 National Champion Charolais Female as well as Supreme Champion Female at the Tulsa State Fair and Champion in both the Junior and Open Charolais shows at the 2015 National Western Stock Show. They are sired by the 2014 National Champion Charolais bull, MCF Bohannon 305A.

These summer-born heifers will be AI bred to CCC WC Resource 417 P later this fall. After they are confirmed bred, both will undergo one IVF cycle in December/January. The buyer of this lot is purchasing his or her pick (one pregnant recip) of the resulting pregnancies. Pregnancies will be due in the fall of 2017. The pregnancy offered here, produced early in these females' life, will have tremendous long-term potential as 225 and 235 continue to appreciate in value. The winning bidder will pay 50% on sale day, with the remaining balance paid when pregnancies are confirmed in the spring of 2017.

***Selling one pregnant recip due to calve fall 2017
carrying the buyer's choice of a pregnancy
from either the Lot 3 or Lot 4 mating.***



Maverick 5117
sire of Lot 3 pregnancy

J&J Angelina 235



Simply Red
sire of Lot 4 pregnancy

J&J Angelina 225

3 | Maverick x J&J Angelina 235

charolais | pregnancy due: **fall 2017**

<p>LT-WC Templeton 1483 Pld ET WC CCC Maverick 5117 P ET Baldrige Sweetheart 7M</p> <p>MCF Bohannon 305A J&J Angelina 235 3R's Angelina 343A ET</p>	<p>LT Cheyenne Blend 7142 P LT Wyoming Breeze 7188 P RC BudsMyDad 225 Polled BaldrigeSweetheart444ET</p> <p>SCC Time Bandit 290W SS Miss Rain 305 Pld TR Mr Fire Water 5792RET Ms Cooley JPT 1410M10 ET</p>
---	---

Sire EPDS: CED +5.5, BW -0.6, WW +29, YW +45, MILK +6, MRB +.01, REA +.11, TSI +182.84
 Dam EPDS: CED -5.4, BW +3.4, WW +24, YW +35, MILK +7, MRB NA, REA NA, TSI NA
 235 will be mated to WC CCC Maverick 5117, the popular second high selling bull out of the record-setting 2016 Wright Charolais bull sale. Maverick was the lead bull in Wright's Reserve Champion Denver Pen and has received high praise for his balance, structure and powerful build, backed by negative birth and big weaning growth genetics. Maverick is produced by one of the Charolais breed's most powerful dams, the immortal Baldrige Sweetheart 7M.

- Buyer's choice pregnancy, due fall 2017.

4 | Simply Red x J&J Angelina 225

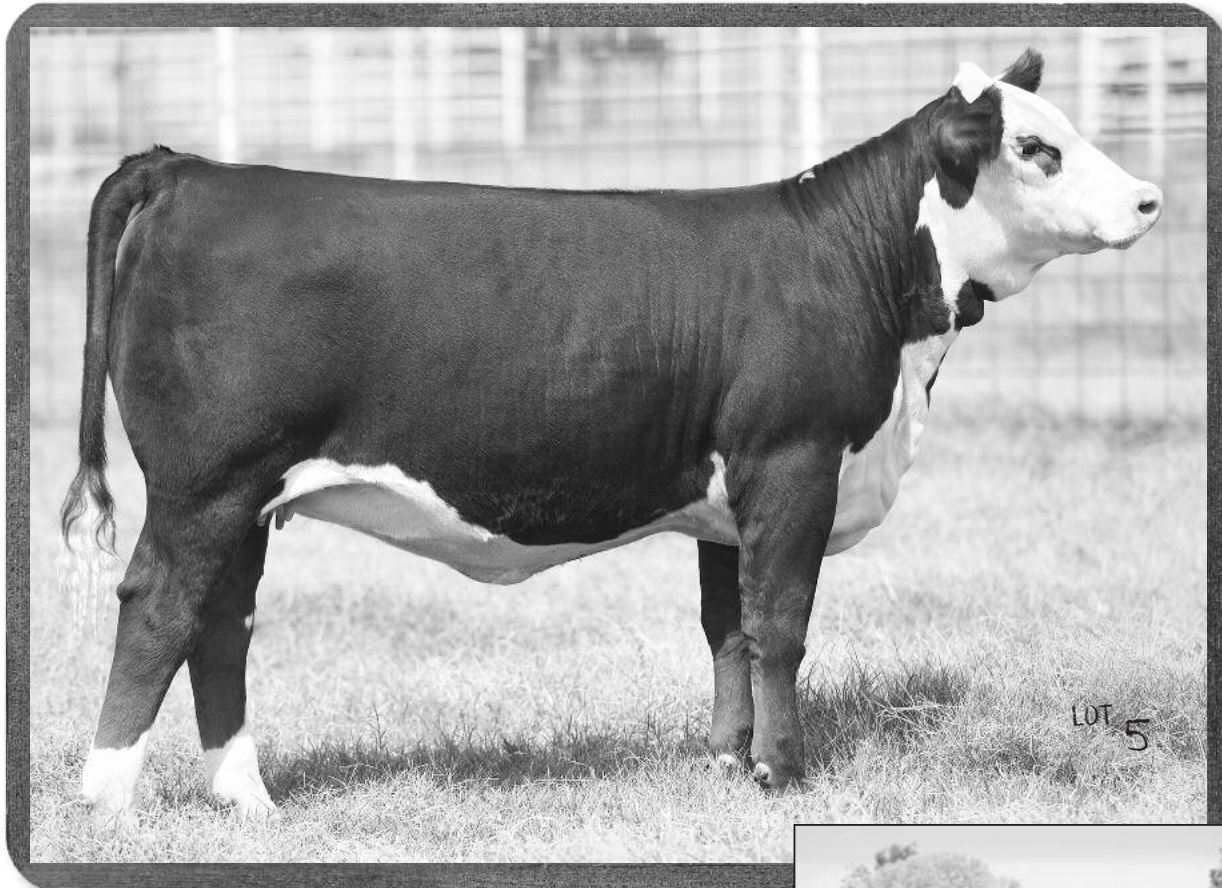
crossbred | pregnancy due: **fall 2017**

<p>WEBR Dr. Feel Good 1112 Simply Red (RAAA 1687240) TC Tommy Girl 107Y</p> <p>MCF Bohannon 305A J&J Angelina 225 3R's Angelina 343A ET</p>	<p>WEBR Dr. Phil PFFR Ms Nyack 237 3 Aces Sideways NBar Tommy Girl</p> <p>SCC Time Bandit 290W SS Miss Rain 305 Pld TR Mr Fire Water 5792RET Ms Cooley JPT 1410M10 ET</p>
---	---

225 will be mated to the 2015 Dixie National Junior Show Supreme Champion bull, Simply Red. Simply Red is a uniquely built, 100% Category 1A Red Angus bull with unparalleled upper rib shape and composition in tandem with an ultra high neck to shoulder attachment and clean chest floor. This mating, given the scope and range of use of the F1 Red Angus x Charolais cross from either the top or bottom of the pedigree, should result in something very special and useful in the world of show cattle and halter prospects.

- Buyer's choice pregnancy, due fall 2017.

✓ Hereford Sale Feature



5 J&J Harley Henrieta 562

hereford | dob: 12/10/15 • aha: **reg. pending** • tattoo: **562**

CRR About Time 743 {CHB,SOD}

RST Times A Wastin 0124 {CHB}

RST Ms 1000 Blazer 2029 {DOD}

THM Durango 4037 {CHB,SOD}

CRR D03 Cassie 206

MJB Blazer 1000 {CHB,SOD}

Ms RST 858 Victor 9059

NJW FHF 9710 Tank 45P {CHB,SOD}

RCS TCC Ms Harley Henrieta Z10ET

LCC Two Timin 438 ET

FHF 8403 Starbuck 19H {SOD}

GV 579 Victoria 9710

Remitall Online 122L {CHB,SOD}

RST ROF Reba 28H

Sire EPDs: CED +2.9, BW +1.0, WW +58, YW +92, MILK +30, MRB -.01, REA +.69, \$CHB +33

Dam EPDs: CED -1.3, BW +5.1, WW +53, YW +92, MILK +24, MRB -.05, REA +.75, \$CHB +27

A tremendous Hereford show and donor prospect here!

The 2013 NWSS Grand Champion Horned Bull and Supreme Champion, RST Times A Wastin 0124, on the 2013 NWSS Junior Show Champion Polled Heifer, RCS TCC Ms Harley Henrieta Z10ET, has resulted in a big ribbed, wide based, sound footed female with a super calm disposition.

- Sells open.

✓ *Workouts for judging teams will be hosted at 7:00 a.m. Saturday, August 27th, and Saturday, September 3rd. Call Mark for details.*



RCS TCC Ms Harley Henrieta Z10ET
dam of Lot 5



RST Times A Wastin 0124
sire of Lot 5

Please join us for the
**Stierwalt
Cattle
Clinic**

Sunday, September 4th

2:30 p.m.

Sponsored by
J&J Cattle Company
Orlando, Oklahoma



...12 noon, Monday, September 5th * Orlando, Oklahoma

✓ The J+J Royal Lass Family...



J&J Royal Lass 422
maternal sister to Lots 6–8; paternal sister to Lot 9

The heifer and steer prospects featured as Lots 6 through 9 descend from the Royal Lass cow family and go back to one of BR Midland's flushmate sisters. The granddam of Lots 6, 7 and 8 and donor dam of Lot 9, T849, has been a cornerstone donor for J&J and Chapman Angus Ranch. Her daughter by Brilliance, J&J CAR Royal Lass 164, is establishing a legacy of her own. 164's daughter J&J Royal Lass 422, sired by J&J senior herd sire Avant Garde 211, was the high seller in our inaugural Back to School Sale in 2014 to the Schnoor Sisters. 422, pictured left, was a class winner at the 2015 NJAS and American Royal before finishing her show career as the Third Overall Angus Heifer and Reserve Champion Bred-and-Owned Angus at the 2016 Oklahoma Youth Expo. 164's 2015 natural calf, sired by J&J junior herd sire FB Catalyst 3032 of J&J, was the Reserve Grand Champion and Champion Bred-and-Owned Market Steer at the 2016 NJAS. Three daughters of 164 sold in the 2016 Graduates of Distinction Sale at J&J for at an average of \$4,500. These halter prospects come from a proven cow family and an elite young donor just beginning to make her mark.



6 | J&J Royal Lass 607

angus | dob: 3/19/16 • aaa: +18506825 • tattoo: 607

Dameron First Class	EXG RS First Rate S903 R3
+EXAR Blue Chip 1877B	Dameron Northern Miss 3114
+Greens Princess 1012	Greens Premium 7578
	Greens Princess 7418
#S A V Brilliance 8077	#+S A V Bismarck 5682
J&J CAR Royal Lass 164	S A V Blackcap May 5270
+Limestone Royal Lass T849	#Stevenson Moneymaker R185
	+Limestone Royal Lass N702

EPDS: CED I+7, BW I+2.1, WW I+64, YW I+101, MILK I+23, MRB I+.39, REA I+.28, \$B +82.07

Flawless skeletal base, ample rib and great look in this March prospect sired by the many-time champion EXAR Blue Chip. Full brother sells as Lot 7. Full sister sells as Lot 49.

- Sells open.



7 | J&J Blue Chip 608 STEER

angus | dob: 3/19/16 • aaa: +18506823 • tattoo: 608

Dameron First Class	EXG RS First Rate S903 R3
+EXAR Blue Chip 1877B	Dameron Northern Miss 3114
+Greens Princess 1012	Greens Premium 7578
	Greens Princess 7418
#S A V Brilliance 8077	#+S A V Bismarck 5682
J&J CAR Royal Lass 164	S A V Blackcap May 5270
+Limestone Royal Lass T849	#Stevenson Moneymaker R185
	+Limestone Royal Lass N702

Interested in showing a steer at the 2017 NJAS in Iowa? Check out this powerfully built, sound footed, good looking rascal who is a maternal sib to the Reserve Champion Steer at the 2016 NJAS. Tremendous potential in this registered purebred Angus prospect steer.

...Proven Championship Genetics



J&J Cat Daddy 528
Champion Bred-and-
Owned and Reserve Grand
Champion Market Steer,
2016 NJAS

Full brother to Lot 8;
maternal brother to
Lots 6 and 7

8

J&J Royal Lass 617

angus | dob: 5/7/16 • aaa: 18505435 • tattoo: 617

+Dameron First Impression

+FB Catalyst 3032 of J&J
+EXAR Princess 6414

#S A V Brilliance 8077

J&J CAR Royal Lass 164

+Limestone Royal Lass T849

#S A V Brilliance 8077

Dameron Northern Miss 3114

#EXAR Lutton 1831

+Greens Princess 1012

#+S A V Bismarck 5682

S A V Blackcap May 5270

#Stevenson Moneymaker R185

+Limestone Royal Lass N702

EPDs: CED I+8, BW I+1.4, WW I+56, YW I+96, MILK I+26, MRB I+.30, REA I+.30, \$B +86.63

Don't overlook this full sib to J&J Cat Daddy 528, who reigns as the Champion Bred-and-Owned and Reserve Champion Overall Market Steer at the 2016 NJAS. Lot 8 is just a May, still very green but comes fully equipped with loads of potential. Her maternal sibs have been very successful in the show ring.

• Sells open.



J&J Hot Stuff 337

Division Champion Bred-and-Owned Bull, 2014 NJAS
Maternal sib to dam of Lots 6-8 and to Lot 9

9

J&J Royal Lass 206

angus | dob: 1/10/16 • aaa: 18489387 • tattoo: 206

+EXAR Totally Tuned 71281

J&J Avant Garde 211

+Limestone Ever Entense S292

#Stevenson Moneymaker R185

+Limestone Royal Lass T849

+Limestone Royal Lass N702

EXAR Sudden Impact 1537

EXAR Arkdale Pride 1001

#BR Midland

+Shadybrook Ever Entense 491G

#Boyd On Target 1083

#Stevenson Clova Pride L888

#Twin Valley Precision E161

BR Royal Lass 7036-19

EPDs: CED I+8, BW I+1.2, WW I+51, YW I+88, MILK I+27, MRB I+.48, REA I+.27, \$B +95.53

This January Royal Lass has the extra bone and stoutness of hip to be competitive. She is a maternal sib to the donor dam of the Lots 6, 7 and 8 prospects. Championship pedigree backed by an immortal Angus cow family.

• Sells open.



✓ Angus & SimAngus Show Heifer Prospects



10 | J&J Princess 603

angus | dob: 3/1/16 • aaa: +18505433 • tattoo: 603

Dameron First Class	EXG RS First Rate S903 R3
+EXAR Blue Chip 1877B	Dameron Northern Miss 3114
+Greens Princess 1012	Greens Premium 7578
	Greens Princess 7418
#Leachman Saugahatchee 3000C	#N Bar Emulation EXT
+FB Princess 1172	Leachman B C 7100
+EXAR Princess 6414	#EXAR Lutton 1831
	+Greens Princess 1012

EPDS: CED I+2, BW I+3.9, WW I+61, YW I+96, MILK I+19, MRB I+.01, REA I+.21, \$B +69.91

Descending from multiple generations of winners—2003 Denver Champion, Greens Princess 1012; 2007 OYE Supreme Champion, EXAR Princess 6414; 2012 Tulsa State Fair Division Champion, FB Princess 1172, and sired by the popular, many-time champion EXAR Blue Chip. This March prospect is blessed with a correct structural base, extra bone, extra look and pattern, all complemented with extra hair. Tremendous potential in this March prospect. Maternal sister sells as Lot 11.

• Sells open.



11 | J&J Princess 613

angus | dob: 4/9/16 • aaa: **reg. pending** • tattoo: 613

Plainview Lutton E102	#EXAR Lutton 1831
+S&R Roundtable J328	Plainview Pride C123
+PVF Proven Queen 786	#BR Midland
	+PVF Proven Queen 419
#Leachman Saugahatchee 3000C	#N Bar Emulation EXT
+FB Princess 1172	Leachman B C 7100
+EXAR Princess 6414	#EXAR Lutton 1831
	+Greens Princess 1012

Sire EPDS: CED +1, BW +5.2, WW +48, YW +79, MILK +20, MRB +.46, REA +.43, \$B +118.80

Dam EPDS: CED +2, BW +3.5, WW +51, YW +85, MILK +20, MRB -.25, RE +.42, \$B +74.69

Sleek fronted, big hipped and wedge shaped, Lot 11 is still pretty green, but like her sister selling as Lot 10, she has tremendous potential. Descending from a line of champions such as Princess 1012 and Princess 6414, 613 could easily develop into the best Angus show heifer in the entire sale.

• Sells open.



12 | PKL/J&J/3CM Queen 601D

simangus | dob: 2/14/16 • asa: **reg. pending** • tattoo: 601D

CNS Dream On L186	Nichols Legacy G151
SVF Steel Force S701	CNS Sheeza Dream K107W
SVF Sheza Beauty L901	PVF-BF BF26 Black Joker
	SVF Sheza Lady J900
N Bar Emulation EXT	Emulation N Bar 5522
J&J Queen 7001	N Bar Primrose 2424
J&J Queenie 9206	A&B Yukon 7150
	C&C Queen 418

A halfblood SimAngus heifer prospect descending from the Queen family. Sired by the ever-popular Steel Force, this heifer is massive ribbed, big hipped and sound footed with a killer profile. A definite sale feature from the PKL, J&J and Daniel Miller donor, J&J Queen 7001. A maternal sister to this heifer was a popular division champion in the 2016 OYE Angus show. Consider the past history and SimAngus show ring success of the produce from the J&J Queens as you evaluate this heifer.

• Sells open.

✓ Angus Show Heifer Prospects

13

J&J Barbaramere 604

angus | dob: 3/1/16 • aaa: 18505434 • tattoo: 604

#+S A V Bismarck 5682	#+G A R Grid Maker
#S A V Brilliance 8077	S A V Abigale 0451
S A V Blackcap May 5270	#S A V 8180 Traveler 004
	#+S A V May 2420
#E&B 878 New Design 435	#Bon View New Design 878
CJSJ RR Barbaramere A005	+E&B 598 Lady Bando 251
RR Barbaramere Y015	+M A R Playmaker 3001
	RR Barbaramere 7704

EPDs: CED I+11, BW I-0.5, WW I+46, YW I+88, MILK I+27, MRB NA, REA NA, \$B NA

Super correct, big ribbed and the right size. Sired by a proven bull and produced by a young cow descending from the famed Rollin Rock program. Tremendous long-term potential in this young female.

• Sells open.



14

J&J Queen 606

angus | dob: 3/19/16 • aaa: 18509045 • tattoo: 606

BCII Money Makin Express 508	+Northern Express 0424
+BC II Skyfall 2812	Schelskes Miss Laura 627
+Limestone Arkdale Pride U184	#+B C Lookout 7024
	+WK Arkdale Pride 255
+J&J Identity 9075	G C C Osage 601S
+J&J Queen 210	+J&J Blackcap 5112
+J&J Queen 7001	#N Bar Emulation EXT
	+J&J Queenie 9206

EPDs: CED I+2, BW I+1.8, WW I+48, YW I+74, MILK I+18, MRB I+.33, REA I+.19, \$B +87.37

Another prospect from the Queen family and sired by the Express herd sire BCII Skyfall. Great look and super correct March prospect. Maternal granddam is the donor dam of the Lot 12 female.

• Sells open.



15

J&J Princess 619

angus | dob: 5/7/16 • aaa: 18506203 • tattoo: 619

+Dameron First Impression	#S A V Brilliance 8077
+FB Catalyst 3032 of J&J	Dameron Northern Miss 3114
+EXAR Princess 6414	#EXAR Lutton 1831
	+Greens Princess 1012
Dameron First Class	EXG RS First Rate S903 R3
+EXAR Princess 5662	Dameron Northern Miss 3114
+EXAR Princess 9830	#BC 7022 Raven 7965
	+EXAR Princess 6414

EPDs: CED I+5, BW I+3.0, WW I+53, YW I+91, MILK I+21, MRB I+.17, REA I+.35, \$B +93.94

Adjust your eyes, as this is one's just a May and one of the two youngest heifers in the sale. Sired by Catalyst, Lot 15 is a paternal sib to the Reserve Champion Steer at the 2016 NJAS and produced by a First Class daughter, who herself was a class winner for Charley Johnson at the 2013 NJAS and sells as Lot 25.

• Sells open.



EXAR Princess 5662
dam of Lot 15...sells as Lot 25

✓ Fall-Calving Angus Cows



16

J&J Blackcap 345

angus | dob: 11/1/13 • aaa: 17765011 [DDP] • tattoo: 345

#Sitz Upward 307R	#Connealy Onward
EXAR Upshot 0562B	Sitz Henrietta Pride 81M
#+EXAR Barbara T020	#ISU Imaging Q 9111
	LCC Mc Henry Barbar MG382
#+Rito 6EM3 of 4L1 Emblazon	#+O C C Emblazon 854E
+J&J Blackcap 044	+Rita 4L1 of 2536 208
2 Bar New Design 1407 3352	#Bon View New Design 1407
	+GARLD 1489 Traveler 900

EPDS: CED +9, BW +1.0, WW +49, YW +93, MILK +27, MRB NA, REA NA, \$B NA

This female descends from the powerful Blackcap cow family. She did a nice job of raising her first calf, who sells as Lot 50.

- Confirmed safe to Sitz Top Game 561X. Due 9/11/16.



17

J&J Ever Entense 346

angus | dob: 11/1/13 • aaa: +17765010 • tattoo: 346

Connealy Consensus	#KMK Alliance 6595 187
#Connealy Consensus 7229	Blinda of Conanga 004
Blue Lilly of Conanga 16	#Woodhill Admiral 77K
	Blue Cash of Conanga 6020
#BR Midland	#Twin Valley Precision E161
+Limestone Ever Entense S292	BR Royal Lass 7036-19
+Shadybrook Ever Entense 491G	#Traveler 124 G D A R
	Sitz Everelda Entense 1137

EPDS: CED +9, BW +0.8, WW +50, YW +86, MILK +33, MRB +.81, REA +.50, \$B +74.34

A direct daughter of one of the most productive cows we have ever owned, Ever Entense S292. 346 did a nice job raising her first calf. Maternal sisters sell as Lots 47 and 48.

- Sells safe to J&J Avant Garde 211. Due to calve between 10/1/16 and 11/15/16.



18

FB Princess 3112

angus | dob: 9/8/13 • aaa: 17634130 [DDF] • tattoo: 3112

#BC 7022 Raven 7965	#B C Marathon 7022
+FB C4D Sandman 925	O C C Blackbird 796F
+EXAR Princess 6414	#EXAR Lutton 1831
	+Greens Princess 1012
#Sitz Upward 307R	#Connealy Onward
Greens FB Princess 0812	Sitz Henrietta Pride 81M
+Greens Princess 8812	#EXAR Lutton 1831
	+Greens Princess 5512

EPDS: CED +5, BW +2.9, WW +67, YW +112, MILK +27, MRB NA, REA NA, \$B NA

A powerful three-year-old who raised a stud bull calf last fall on her first natural. Extra bone, power and look from the Princess line.

- Sells safe to J&J Avant Garde 211. Due to calve between 9/15/16 and 11/15/16.

✓ Fall-Calving Angus Cows

19 | J&J Mabel 036

angus | dob: 9/7/10 • aaa: +16884302 • tattoo: 036

#Northern Improvement 4480 GF	#TC Stockman 365
#EXAR Lutton 1831	Blackcap of R R 5367
EXAR Saras Dream 9809	#A&B Yukon 7150
	+Saras Dream
#S A F Directive	#Millcreek Diversity
SydGen Mabel 5003	+S A F Royal Queen 5084
#Mabel of Rollin Rock 0665	+Shady Brook Encore 36H
	Mabel of Rollin Rock 6429

EPDs: CED +10, BW +0.3, WW +56, YW +99, MILK +22, MRB +.30, REA +.10, \$B +120.92

036 has been a great cow. She is the dam of the 2014–2015 high point Bred-and-Owned Angus Show Heifer of the Year, J&J Mabel 340, as recognized by the Oklahoma Angus Association. Produced two embryos from one IVF cycle.

- Sells safe to J&J Avant Garde 211. Due to calve between 9/15/16 and 11/15/16.



20 | Great One H189

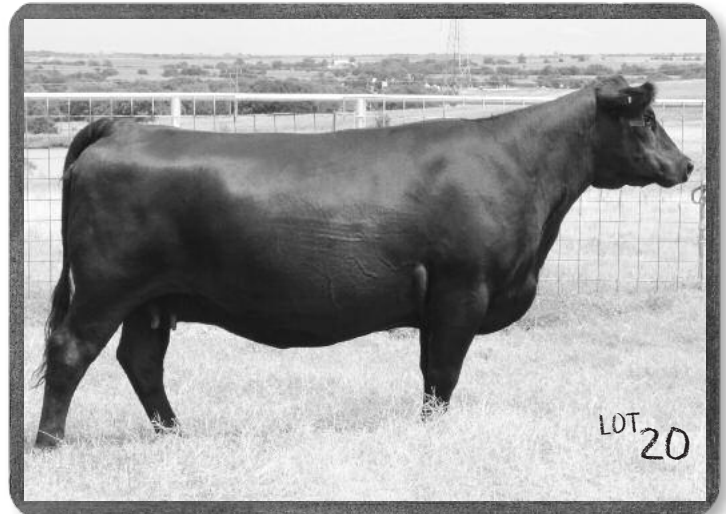
angus | dob: 8/30/09 • aaa: +16601999 [AMF-NHF] • tattoo: H189

#S A V 8180 Traveler 004	#Sitz Traveler 8180
#S A V Net Worth 4200	+Boyd Forever Lady 8003
+S A V May 2410	#S A F 598 Bando 5175
	#S A V May 6269
#TC Total 410	#Bon View New Design 208
J&J 410 Lass 710	+TC Erica Eileen 2047
Blackjacks Lass 270R	#N Bar Emulation EXT
	Summitcrest Lass 062E

EPDs: CED -11, BW +6.4, WW +53, YW +97, MILK +26, MRB +.59, REA +.63, \$B +122.61

H189 is an outstanding cow who adds extra power and width to her calves. Worked once in IVF, producing 18 embryos.

- Sells safe to J&J Avant Garde 211. Due to calve between 9/15/16 and 11/15/16.



For Reference Only

REF. | J&J Avant Garde 211

angus | dob: 2/11/12 • aaa: +17409883 • bull

EXAR Sudden Impact 1537	#Northern Improvement 4480 GF
+EXAR Totally Tuned 71281	+B L R Blushing Pride 9097
EXAR Arkdale Pride 1001	#Bon View New Design 1407
	WK Arkdale Pride 9353
#BR Midland	#Twin Valley Precision E161
+Limestone Ever Entense S292	BR Royal Lass 7036-19
+Shadybrook Ever Entense 491G	#Traveler 124 G D A R
	Sitz Everelda Entense 1137

EPDs: CED +10, BW +1.0, WW +45, YW +80, MILK +30, MRB +.40, REA +.36, \$B +84.43

J&J herd sire owned with Schnoor Sisters and Scott Bourland.



✓ Charolais Sale Features



3R's Shot of Joe ET
service sire to Lot 21

21 | M&M Ms Global 2017 Pld ET

charolais | dob: **3/11/12** • aica: **EF1159773** • tattoo: **2017**

SVY Worldwide Pld 621S	SVY Freedom Pld 307N
HCR Global 0150 Pld	Shawnee 22Karat 222M
Miss HCR Randi 5106 Pld	Schurrtop HCR Rancher
	WCR Miss RCC 3323
LT Wyoming Wind 4020 Pld	Schurrtop 5627
M&M Ms Wyo Wind 9046 Pld ET	LT Chap's Lady 2170P
VCR Miss Duchess 433	VCR Sir Duke 914 Pld
	VCR Miss Showman 734

EPDS: CED +4.9, BW +0.5, WW +18, YW +35, MILK +7, MRB +.10, REA +.26, TSI +180.41
2017 is one of our original Charolais purchases from M&M. Great udder and teat structure, feminine and stout. She sells bred to Shot of Joe, an embryo sib to 3R's Angelina 343, the 2014 National Champion Charolais Heifer.

- Sells safe to 3R's Shot of Joe ET. Due to calve between 11/15/16 and 12/31/16.

22 | SH Holy Nancy 501

charolais | dob: **5/2/15** • aica: **F1208430** • tattoo: **501**

TR Mr Fire Water 5792RET	Thomas Oahe Wind 0772ET P
TR PZC Holywater 9777 ET	ThomasSwisserSweet1764ET
Thomas Ms Impressive0641	JWK Impressive D040 ET
	BCI Miss Verylimit 6033P
M6 Right Now 5239 Pld ET	M6 Grid Maker 104 PET
SH Miss 5239 Nancy 9011 PET	M6 Ms E46's Duke 248 PET
M6 Ms H45 Nancy 382 ET	CJC Trademark H45
	M6 066 Nancy 106P ET

EPDS: CED +3.3, BW +1.4, WW +34, YW +65, MILK +10, MRB -.02, REA +.55, TSI +205.86
Holy Nancy was Charley's show heifer who won her class at the 2016 NWSS. Correct, stout and bred to the increasingly popular CCC Resource, a big numbered, sound footed young Charolais bull who topped the 2015 Wright Charolais Bull Sale.

- Sells safe to CCC WC Resource 417 P. Due to calve 2/27/17.



CCC WC Resource 417 P
service sire to Lot 22

For Reference Only

REF. | 3R's Shot of Joe ET

charolais | dob: **9/10/14** • aica: **EM858246** • bull

Thomas Oahe Wind 0772ET P	LT Wyoming Wind 4020 Pld
TR Mr Fire Water 5792RET	Thomas Ms Camelot 5646
ThomasSwisserSweet1764ET	LHD Cigar E46
	Thomas Ms Bonanza 8698
CCR Jackpot 1410K5 PET	WCR Prime Cut 764 Pld
Ms Cooley JPT 1410M10 ET	Ms CCR W Wind 1410G PET
Ms CCR Schurshot 1410J P	CCR Schurshot 1107F7 PET
	Ms CCR SK Eas 1410G2 PET

EPDS: CED -4.4, BW +1.1, WW +25, YW +37, MILK +6, MRB -.01, REA +.46, TSI +176.39
Pasture service sire to Lot 21.

REF. | CCC WC Resource 417 P

charolais | dob: **2/17/14** • aica: **M846721** • bull

LT Rio Bravo 3181 P	LT Rio Blanco 1234 P
LT Rushmore 8060 Pld	LT 7N of Duke 9083 Pld
LT Brenda's Ease 3055Pld	LT Unlimited Ease 9108
	LT Brenda 1014 Pld
LT Blue Value 7903 ET	LT Bluegrass 4017 P
WC CCC Blue Girl 1528 P	LT Unlimited Maid 7184 P
CCC Bad Girlfriend U146 P ET	LC Suspect 0109 P ET
	RCR Ms Bess G532

EPDS: CED +9.1, BW -2.0, WW +39, YW +65, MILK +15, MRB +.16, REA +.74, TSI +209.50
AI service sire to Lot 22.

✓ Spring-Calving Angus Cows

23

CJSJ RR Barbaramere A005

angus | dob: 2/2/13 • aaa: 17548988 • tattoo: A005

#Bon View New Design 878	#B/R New Design 036
#E&B 878 New Design 435	Bon View Gammer 85
+E&B 598 Lady Bando 251	#Bon View Bando 598
	+E&D 1483 Lady Scotchman 797
+M A R Playmaker 3001	#+G A R Grid Maker
RR Barbaramere Y015	+K A F Blackcap 9053
RR Barbaramere 7704	#R C Black Cigar 0293
	RR Barbaramere 5746

EPDs: CED +11, BW -1.3, WW +42, YW +87, MILK +26, MRB NA, REA NA, \$B NA

Descending from the Barbarameres of Rollin Rock, A005 offers femininity and power in a very maternal package. She did a great job with her first natural calf last year. Her heifer calf by Skyfall sells as Lot 12.

• Sells safe to HA Cowboy Up. Due to calve 3/29/17.



24

J&J Empress179

angus | dob: 9/11/11 • aaa: +17272166 • tattoo: 179

Connealy Consensus	#KMK Alliance 6595 I87
#Connealy Consensus 7229	Blinda of Conanga 004
Blue Lilly of Conanga 16	#Woodhill Admiral 77K
	Blue Cash of Conanga 6020
#Schurrtop MC 2500	#Schurrtop M C
+OSU Empress 7103	Schurrtop R S 1413 2153
+O S U Empress 4123	#+Northern Improvement 4480 GF
	+O S U 2928 Empress 4177

EPDs: CED +6, BW +1.3, WW +55, YW +91, MILK +34, MRB I+.59, REA I+.39, \$B +82.43

From the famed Empress 6079 line of females, 179 has been a tremendous cow at J&J.

• Sells safe to HA Cowboy Up. Due to calve 3/29/17.



25

EXAR Princess 5662

angus | dob: 9/18/12 • aaa: +17352404 • tattoo: 5662

EXG RS First Rate S903 R3	#EXAR Lutton 1831
Dameron First Class	Rafter S Blackcap P909
Dameron Northern Miss 3114	+Dameron P V F Raptor 702
	#+Dameron Miss 550
#BC 7022 Raven 7965	#B C Marathon 7022
+EXAR Princess 9830	O C C Blackbird 796F
+EXAR Princess 6414	#EXAR Lutton 1831
	+Greens Princess 1012

GE-EPDs: CED +4, BW +3.0, WW +50, YW +86, MILK +17, MRB +.25, REA +.66, \$B +115.99

5662 was Charley Johnson's initial show heifer purchase from the 2013 EXAR Honor Roll Sale; later that year, she won her class at the NJAS in Kansas City. Worked four times in IVF, producing six embryos. A very nice natural calf by Catalyst sells as Lot 15.

• Sells safe to S&R Roundtable J328. Due to calve 3/21/17.



✓ Spring-Calving Angus Cows



26 | J&J Queen 210

angus | dob: 2/11/12 • aaa: +17411579 [DDF] • tattoo: 210

G C C Osage 601S	G C C Old School 4709
+J&J Identity 9075	G C C Ms Improvement 36092
+J&J Blackcap 5112	#BR Midland
	+J&J 1531 Blackcap 240
#N Bar Emulation EXT	#Emulation N Bar 5522
+J&J Queen 7001	N Bar Primrose 2424
+J&J Queenie 9206	#+A&B Yukon 7150
	C&C Queen 41

GE-EPDS: CED -4, BW +2.5, WW +46, YW +74, MILK +14, MRB +.39, REA +.34, \$B +106.64

Sound, great udder structure and wide pin setting. 210 was worked once in IVF, producing three embryos.

- Sells safe to C&C Priority 1428B EXAR. Due to calve 3/1/17. Ultrasound indicates 210 is likely carrying a heifer calf.



27 | EXAR Forever Lady 0714

angus | dob: 1/27/10 • aaa: +16555838 • tattoo: 0714

#+O C C Emblazon 854E	#D H D Traveler 6807
##Rito 6EM3 of 4L1 Emblazon	Dixie Erica of C H 1019
+Rita 4L1 of 2536 208	#Bon View New Design 208
	G A R Precision 2536
#Summitcrest High Prime 0H29	#Gardens Prime Time
+EXG Forever Lady 3758	Summitcrest Missie 2F55
V A R Forever Lady 4304	#G D A R Executive 727
	#Blackcap Lady 384 G D A R

GE-EPDS: CED +4, BW +1.6, WW +49, YW +86, MILK +22, MRB +.45, REA +1.02, \$B +93.53

Big ribbed, wide built, moderate sized cow that was worked twice in IVF to produce 18 embryos. Her Ribeye EPD ranks among the top 2% of Angus dams.

- Sells safe to Quaker Hill Rampage 0A36. Due to calve 3/29/17.



28 | J&J Blackcap 044

angus | dob: 9/24/10 • aaa: +16878399 [DDP] • tattoo: 044

#+O C C Emblazon 854E	#D H D Traveler 6807
##Rito 6EM3 of 4L1 Emblazon	Dixie Erica of C H 1019
+Rita 4L1 of 2536 208	#Bon View New Design 208
	G A R Precision 2536
#Bon View New Design 1407	#B/R New Design 036
2 Bar New Design 1407 3352	Bon View Pride 664
+GARLD 1489 Traveler 900	#G A R Traveler 1489
	#G A R Scotch Cap 867

EPDS: CED +12, BW -0.5, WW +41, YW +77, MILK +24, MRB +.44, REA +.78, \$B +83.09

044 comes from a powerful cow family and has been a consistent producer of easily marketable calves. Her most recent natural calf sold for \$4,500 in our Graduates of Distinction Sale.

- Sells safe to J&J Avant Garde 211. Due to calve between 1/1/17 and 1/31/17.

✓ Spring-Calving Angus Cows

29 | J&J Mabel 051

angus | dob: 10/7/10 • aaa: +16878329 • tattoo: 051

#Northern Improvement 4480 GF	#TC Stockman 365
#EXAR Lutton 1831	Blackcap of R R 5367
EXAR Saras Dream 9809	#+A&B Yukon 7150
	+Saras Dream
#S A F Directive	#Millcreek Diversity
SydGen Mabel 5003	+S A F Royal Queen 5084
#Mabel of Rollin Rock 0665	+Shady Brook Encore 36H
	Mabel of Rollin Rock 6429

GE-EPDs: CED +13, BW -0.3, WW +55, YW +93, MILK +27, MRB +.29, REA +.18, \$B +117.60

Another former donor, 051 has been a tremendous cow. Worked twice in IVF, producing seven viable embryos.

- Sells safe to J&J Avant Garde 211. Due to calve between 3/1/17 and 4/30/17.



J&J Avant Garde 211
His pasture service sells

30 | Greens FB Princess 0812

angus | dob: 4/6/10 • aaa: 16621878 [DDF] • tattoo: 0812

#Connealy Onward	#Connealy Lead On
#Sitz Upward 307R	Altune of Conanga 6104
Sitz Henrietta Pride 81M	#Sitz Value 7097
	Sitz Henrietta Pride 1370
#EXAR Lutton 1831	#Northern Improvement 4480 GF
+Greens Princess 8812	EXAR Saras Dream 9809
+Greens Princess 5512	Greens Premium 7578
	Greens Princess 7418

EPDs: CED +5, BW +2.9, WW +62, YW +112, MILK +28, MRB +.46, REA +.40, \$B +135.63

Moderate framed, big ribbed, productive female with an excellent EPD profile for growth traits, ranking in the breed's top 2% for WW, top 1% for YW and top 5% for \$B.

- Sells safe to J&J Avant Garde 211. Due to calve between 2/1/17 and 2/28/17.



For Reference Only

REF. | FB Catalyst 3032 of J&J

angus | dob: 3/18/13 • aaa: +17589539 • bull

#S A V Brilliance 8077	#+S A V Bismarck 5682
+Dameron First Impression	S A V Blackcap May 5270
Dameron Northern Miss 3114	+Dameron P V F Raptor 702
	#+Dameron Miss 550
#EXAR Lutton 1831	#Northern Improvement 4480 GF
+EXAR Princess 6414	EXAR Saras Dream 9809
+Greens Princess 1012	Greens Premium 7578
	Greens Princess 7418

GE-EPDs: CED +5, BW +2.8, WW +59, YW +99, MILK +23, MRB +.09, REA +.03, \$B +73.87

Herd sire for J&J Cattle Company.



✓ Black Gold Angus Feature Spring Pair

The Complete Dispersion of **BLACK GOLD ANGUS**

Lots 31-45



31

SAV Emblynette 3190

angus | dob: 2/27/13 • aaa: 17556254 • tattoo: 3190

#S A V Final Answer 0035

#Sitz Traveler 8180

SAV Priority 7283

S A V Emulous 8145

#+S A V Blackcap May 5530

#B C C Bushwacker 41-93
S A V May 7238

#+S A V 707 Rito 9969

+Rito 707 of Ideal 3407 7075
BR Polly 8077-472

SAV Emblynette 1191

S A V Emblynette 8188

#+S A V 004 Density 4336
+S A V Emblynette 3310

EPDs: CED -1, BW +3.2, WW +68, YW +115, MILK +28, MRB I+-.36, REA I+-.68, \$B +130.29

This direct daughter of the Genex/CRI AI sire SAV Priority 7283 stems back to the ever-powerful Emblynette family. This female was raised in the Schaff Angus Valley herd in North Dakota and is a powerful, deep-bodied, thick-made, long-bodied, extremely docile three-year-old with a perfect udder. Her weaning ratio was 106 in the midst of stiff competition. Her pedigree is stacked with proven performance and tremendous maternal genetics. Her weaning and yearling weight EPDs are in the top 1% and 2%, and her \$B of +131.01 ranks her in the top 10% of the breed.

3190's third-generation dam is a full sister to SAV Emblynette 3301, one of the top income producing females in the Schaff Angus Valley program; she is also the mother of the \$130,000 SAV Hesston 2217, the \$28,000 SAV Momentum 9274 and a long list of other top selling cattle through the Schaff Angus Valley program.

• Sells safe to SAV Recharge 3436. Due to calve 4/15/17.



SAV Priority 7283
sire of Lot 31

31A

BGAR Recharge 1616

BULL

angus | dob: 4/28/16 • aaa: 18486687 • tattoo: 1616

+Rito 707 of Ideal 3407 7075

#R R Rito 707

+SAV Recharge 3436

Ideal 3407 of 1418 076

S A V Blackcap May 4136

#S A V 8180 Traveler 004

#+S A V May 2397

S A V Priority 7283

#S A V Final Answer 0035

SAV Emblynette 3190

S A V Emblynette 1191

#+S A V Blackcap May 5530

#+S A V 707 Rito 9969

S A V Emblynette 8188

EPDs: CED I+2, BW I+2.0, WW I+65, YW I+115, MILK I+29, MRB NA, REA NA, \$B NA

This outstanding bull calf out of the Lot 31 sale feature is by SAV Recharge 3436, a featured Select Sires AI sire. 1616 is a modest birth, high growth, high maternal individual that reads with tremendous breeding potential.

✓ Black Gold Angus Fall-Calving Cows & Heifers

32

BGAR Blackcap 1421

angus | dob: 9/26/14 • aaa: 18487901 • tattoo: 1421

#+S A V Bismarck 5682	#+G A R Grid Maker
Buford Bismarck X576	S A V Abigale 0451
#BUF Clova Pride 7322	Sitz RLS Emulation EXT 5522
	J Bar 7 Clova Pride 318
#N Bar Emulation EXT	#Emulation N Bar 5522
+Black Gold Blackcap 8024	N Bar Primrose 2424
+A Plus Blackcap 9220	#A A R New Trend
	#G A R Scotch Cap 867

EPDs: CED +7, BW +0.9, WW +45, YW +77, MILK +25, MRB NA, REA NA, \$B NA
 The combination of Bismarck, EXT and the \$60,000 GAR Scotch Cap 867 blends for powerful genetics. This low birth weight, high maternal female reads with outstanding performance, eye appeal and quality.
 • Sells safe to SAV Pioneer 7301. Due to calve 10/11/16.

33

BGAR Lady Bismarck 1417

angus | dob: 9/10/14 • aaa: 18494567 • tattoo: 1417

#+S A V Bismarck 5682	#+G A R Grid Maker
Buford Bismarck X576	S A V Abigale 0451
#BUF Clova Pride 7322	Sitz RLS Emulation EXT 5522
	J Bar 7 Clova Pride 318
#EXAR Lutton 1831	#+Northern Improvement 4480 GF
Black Gold Lacy 5040	EXAR Saras Dream 9809
B G A R 043-1005	#+Sitz Traveler 043
	Q R F Pandora 5A53

EPDs: CED I+7, BW I+1.4, WW I+48, YW I+80, MILK I+23, MRB I+.42, REA I+.41, \$B +93.04
 This really fancy first-calf heifer represents three generations of breeding in the Black Gold program. 1417 blends SAV Bismarck 5682, EXAR Lutton and Sitz Traveler 043 into a powerful package.
 • AI to SAV Pioneer 7301 to calve 11/6/16.
 Exposed to TCC Perfect Answer 1201. Examined safe.

34

BGAR Lady Mustang 2094

angus | dob: 9/23/12 • aaa: 18072045 • tattoo: 2094

#S A V Final Answer 0035	#Sitz Traveler 8180
S A V Mustang 9134	S A V Emulous 8145
#S A V Emblynette 7415	#S A V Net Worth 4200
	#S A V Emblynette 7260
#+S A V Bismarck 5682	#+G A R Grid Maker
Black Gold Lady Rita 0565	S A V Abigale 0451
+Daltons Rita 813 of RP A82	#G A R Retail Product
	VT 208 New Design A82

EPDs: CED +10, BW +0.6, WW +47, YW +85, MILK +29, MRB I+.62, REA I+.70, \$B +79.58
 This featured Rita female posted an IMF ratio of 147 and UREA ratio of 107 among 131 contemporaries. She is by the Select Sires top-selling bull of his sire group, SAV Mustang 9134, back to the featured VT 208 New Design A82. Daughter sells as Lot 35. Dam sells as Lot 40.
 • Sells safe to TCC Perfect Answer 1201. Due to calve 10/14/16.

35

BGAR Rita 1428

angus | dob: 10/29/14 • aaa: 18487932 • tattoo: 1428

#+S A V Bismarck 5682	#+G A R Grid Maker
Buford Bismarck X576	S A V Abigale 0451
#BUF Clova Pride 7322	Sitz RLS Emulation EXT 5522
	J Bar 7 Clova Pride 318
S A V Mustang 9134	#S A V Final Answer 0035
BGAR Lady Mustang 2094	#S A V Emblynette 7415
Black Gold Lady Rita 0565	#+S A V Bismarck 5682
	+Daltons Rita 813 of RP A82

EPDs: CED +9, BW +0.6, WW +53, YW +91, MILK +28, MRB NA, REA NA, \$B NA
 This beautiful bred heifer has many productive years ahead of her. She is by Buford Bismarck back to the SAV Mustang daughter selling as Lot 34, blending a powerhouse, calving ease package with tremendous maternal.
 • Sells safe to TCC Perfect Answer 1201. Due to calve 12/17/16.



36

BGAR Lady Emblazon 2091

angus | dob: 9/28/12 • aaa: +18079670 • tattoo: 2091

#+S A V Bismarck 5682	#+G A R Grid Maker
#S A V Brand Name 9115	S A V Abigale 0451
#+S A V Blackcap May 5530	#B C C Bushwacker 41-93
	S A V May 7238
#+O C C Emblazon 854E	#D H D Traveler 6807
+Limestone Rita T101	Dixie Erica of C H 1019
+G A R New Design 6231	#B/R New Design 036
	+G A R Precision 1928

EPDs: CED +1, BW +2.0, WW +56, YW +94, MILK +18, MRB I+.34, REA I+.90, \$B +114.49
 This daughter of the \$156,000 SAV Brand Name 9115, a featured Genex/CRI AI sire, stems back to the featured Rita family. Granddam was a past top-selling female of the Fox Run Annual Production Sale. This female is stacked with performance, power and quality. Full sister sells as Lot 37.
 • AI to SAV International 2020 to calve 10/10/16.
 Exposed to TCC Perfect Answer 1201. Examined safe.

37

BGAR Brand Name Lady 2020

angus | dob: 2/12/12 • aaa: +18064656 • tattoo: 2020

#+S A V Bismarck 5682	#+G A R Grid Maker
#S A V Brand Name 9115	S A V Abigale 0451
#+S A V Blackcap May 5530	#B C C Bushwacker 41-93
	S A V May 7238
#+O C C Emblazon 854E	#D H D Traveler 6807
+Limestone Rita T101	Dixie Erica of C H 1019
+G A R New Design 6231	#B/R New Design 036
	+G A R Precision 1928

EPDs: CED I+1, BW I+2.0, WW I+54, YW I+92, MILK I+16, MRB I+.34, REA I+.90, \$B +114.13
 A full sister to Lot 36, produced in the Black Gold embryo program from the \$156,000 Lot 1 high-selling bull from the 2014 Schaff Angus Valley Sale and a long time donor daughter of OCC Emblazon 854E who posted a ribeye ratio of 116. This is a young, docile and easy-fleshing female with an extremely high quality, perfect udder in a feminine package. Her granddam was a top-selling female from a Fox Run sale and stems from the legendary Rita family.

• AI to SAV Ten Speed 3022 to calve 10/9/16.
 Exposed to TCC Perfect Answer 1201. Examined safe.



Limestone Rita T101
 dam of Lots 36 & 37

✓ Black Gold Angus Fall-Calving Cows



38

Black Gold Pride Lass 1083

angus | dob: 11/22/11 • aaa: 17145372 • tattoo: 1083

#S A V Final Answer 0035	#Sitz Traveler 8180
#S A V Pioneer 7301	S A V Emulous 8145
S A V Blackbird 5297	#+Boyd New Day 8005
	S A V Blackbird 1082
+BC Big Daddy 702-5	#+O C C Emblazon 854E
+Black Gold Pride Lass N237	Gibbet Hill Mignonne E37
+O C C Prides Lass 690K	#+O C C Emblazon 854E
	O C C Prides Lass 828B

EPDs: CED +5, BW +1.3, WW +51, YW +90, MILK +21, MRB I+.38, REA I+1.03, \$B +107.97

A daughter of the \$65,000 Genex/CRI AI sire and Pathfinder sire SAV Pioneer 7301, back to the legendary OCC Prides Lass 609K family on the bottom side. 609K was the \$90,000 featured donor bred in the Ohlde Cattle Company program in Kansas.

- AI to SAV Recharge 3436 to calve 10/10/16.
Exposed to TCC Perfect Answer 1201. Examined safe.

39

Black Gold Blackcap 0571

angus | dob: 11/15/10 • aaa: 17142966 • tattoo: 0571

#BR Midland	#Twin Valley Precision E161
+LS Midland P176	BR Royal Lass 7036-19
+Double W Miss Primrose E60	#+Leachman Right Time
	N Bar Primrose 2424
#N Bar Emulation EXT	#Emulation N Bar 5522
+Black Gold Blackcap 7007	N Bar Primrose 2424
+A Plus Blackcap 3152	#Bon View Bando 598
	#G A R Scotch Cap 867

EPDs: CED +8, BW -0.1, WW +37, YW +63, MILK +17, MRB +.60, REA -.03, \$B +83.88

The combination of the Primrose and Blackcap families blends for powerful genetics. This double-bred N Bar Primrose 2424 stems back to the \$60,000 GAR Scotch Cap 867.

- AI to SAV International 2020 to calve 9/21/16.
Exposed to TCC Perfect Answer 1201. Examined safe.



40

Black Gold Lady Rita 0565

angus | dob: 9/19/10 • aaa: 17142971 • tattoo: 0565

#+G A R Grid Maker	#G D A R Traveler 044
#+S A V Bismarck 5682	G A R Precision 2536
S A V Abigale 0451	#Schoenes Fix It 826
	S A V Abigale 6062
#G A R Retail Product	#G A R Precision 1680
+Daltons Rita 813 of RP A82	+G A R EXT 4927
VT 208 New Design A82	#Bon View New Design 208
	+G A R Plowman G240

EPDs: CED +9, BW +0.8, WW +51, YW +92, MILK +23, MRB +.57, REA +.82, \$B +90.82

The combination of SAV Bismarck, GAR Retail Product and the \$25,000 GAR Plowman G240 blends for powerful genetics. This low birth weight/high growth female reads with balanced carcass genetics. She is a moderate, attractive female with tremendous breeding potential. Her daughter sells as Lot 34.

- AI to SAV Pioneer 7301 to calve 9/23/16.
Exposed to TCC Perfect Answer 1201. Examined safe.

For Reference Only

REF. | TCC Perfect Answer 1201

angus | dob: 11/1/12 • aaa: +17694089 • bull

#Sitz Traveler 8180	#G D A R Traveler 71
#S A V Final Answer 0035	Sitz Everelda Entense 1137
S A V Emulous 8145	#Bon View Bando 598
	S A V Sky Emulous 2124
#+S A V 004 Density 4336	#S A V 8180 Traveler 004
+S A V Madame Pride 8827	S A V May 7238
S A V Madame Pride 2330	#S A V Final Answer 0035
	S A V Madame Pride 0075

EPDs: CED I+10, BW I+0.6, WW I+57, YW I+101, MILK I+24, MRB I+.64, REA I+.53, \$B +96.10

Pasture service sire on the Black Gold Angus females.

Lots 31-45

The Complete Dispersion of Black Gold Angus

For more information, contact: John Freeman 479.366.3409

✓ Black Gold Angus Fall-Calving Cows & Heifers



41

BGAR Lady Bismarck 0563

angus	dob: 9/14/10 • aaa: 17144167 • tattoo: 0563
#+G A R Grid Maker	#G D A R Traveler 044
#+S A V Bismarck 5682	G A R Precision 2536
S A V Abigale 0451	#Schoenes Fix It 826
	S A V Abigale 6062
#G A R Predestined	#B/R New Design 036
+BGAR Lady Predestined 8040	#+G A R EXT 4206
+G A R Expectation 822	#+G A R Expectation 4915
	+G A R 044 Traveler 2328

EPDs: CED +10, BW +0.9, WW +45, YW +82, MILK +22, MRB +.59, REA +.69, \$B +98.75

This outstanding daughter of SAV Bismarck stems back to the \$180,000-valued GAR Expectation 822 and the \$280,000 GAR 044 Traveler 2328, who ranks among one of the top income-producing cows of the breed and has the distinction of being the only full sister to the high performance carcass sire GAR Gridmaker. She is an easy-fleshing, moderate framed female with tremendous performance. Daughter sells as Lot 42.

- AI to SAV International 2020 to calve 10/8/16.
Exposed to TCC Perfect Answer 1201. Examined safe.

42

BGAR Lady Bismarck 1418

angus	dob: 9/14/14 • aaa: 18488405 • tattoo: 1418
#+S A V Bismarck 5682	#+G A R Grid Maker
Buford Bismarck X576	S A V Abigale 0451
#BUF Clova Pride 7322	Sitz RLS Emulation EXT 5522
	J Bar 7 Clova Pride 318
#+S A V Bismarck 5682	#+G A R Grid Maker
BGAR Lady Bismarck 0563	S A V Abigale 0451
+BGAR Lady Predestined 8040	#G A R Predestined
	+G A R Expectation 822

EPDs: CED +11, BW -0.1, WW +49, YW +85, MILK +24, MRB +.55, REA +.70, \$B +96.53

Extremely high-quality bred heifer backed by many generations of proven performance and carcass. She stems back to a third-generation dam that topped out at \$180,000, GAR Expectation 822, and the fourth-generation dam was the \$280,000 GAR 044 Traveler 2328. Dam sells as Lot 41.

- AI to SAV Pioneer 7301 to calve 10/12/16.
Exposed to TCC Perfect Answer 1201. Examined safe.



Corks Elga Erica 006
dam of Lot 43

43

Corks Elga Erica 006 9502

angus	dob: 9/18/09 • aaa: +17319749 • tattoo: 9502
#B C Marathon 7022	O C C Kirby 633K
#BC 7022 Raven 7965	Gibbet Hill Mignonne E37
O C C Blackbird 796F	#O C C Bonanza 880B
	O C C Blackbird 779A
#N Bar Emulation EXT	#Emulation N Bar 5522
Corks Elga Erica 006	N Bar Primrose 2424
+Corks Elga Erica 8104	#D H D Traveler 6807
	Gibbet Hill Elga Erica P 88

EPDs: CED +4, BW +2.0, WW +46, YW +83, MILK +20, MRB +.55, REA +.51, \$B +110.70

A well-balanced female from the legendary Corks Elga Erica 006 from the Cork Cattle Company program, Lot 43 excels in phenotype. She is a modest birth, high maternal female that has tremendous depth and rib shape as well as possessing a feminine, long, clean front.

- AI to SAV Ten Speed 3022 to calve 10/9/16.
Exposed to TCC Perfect Answer 1201. Examined safe.

44

BGAR Lady Pioneer 9073

angus	dob: 9/4/09 • aaa: 16871380 [DDF-OHF] • tattoo: 9073
#S A V Final Answer 0035	#Sitz Traveler 8180
#S A V Pioneer 7301	S A V Emulous 8145
S A V Blackbird 5297	#+Boyd New Day 8005
	S A V Blackbird 1082
+LS Midland P176	#BR Midland
Black Gold 7052	+Double W Miss Primrose E60
+Knops Macey 563-729	#+Rito 2V1 of 2536 1407
	+Magnolia Macey 729

EPDs: CED +6, BW +1.2, WW +50, YW +89, MILK +22, MRB +.49, REA +.82, \$B +105.17

A beautiful daughter of the \$65,000 Pathfinder sire, SAV Pioneer 7301, back to the featured BR Midland on the bottom side. This female combines phenotype, performance, carcass quality and temperament along with breed-leading EPDs that makes her one of the best offered from the Freeman program. This female is packed with power and femininity along with a great udder. Daughter sells as Lot 45.

- Sells safe to TCC Perfect Answer 1201. Due to calve 10/15/16.

45

BGAR Lady Pioneer 1420

angus	dob: 9/24/14 • aaa: 18487866 • tattoo: 1420
#+S A V Bismarck 5682	#+G A R Grid Maker
Buford Bismarck X576	S A V Abigale 0451
#BUF Clova Pride 7322	Sitz RLS Emulation EXT 5522
	J Bar 7 Clova Pride 318
#S A V Pioneer 7301	#S A V Final Answer 0035
BGAR Lady Pioneer 9073	S A V Blackbird 5297
Black Gold 7052	+LS Midland P176
	+Knops Macey 563-729

EPDs: CED +9, BW +0.2, WW +51, YW +89, MILK +24, MRB NA, REA NA, \$B NA

The combination of SAV Bismarck, Pioneer and Midland blends for low birth weight, high maternal genetics. This daughter of Lot 44 is extremely deep bodied, has a huge top and is a great brood prospect.

- AI to Buford Oklahoma X239 to calve 10/30/16.
Exposed to TCC Perfect Answer 1201. Examined safe.

✓ Spring-Calving Angus Heifers



46 | P C C 74-51 Dixie Erica 4538

angus | dob: 11/9/14 • aaa: +18100306 • tattoo: 4538

#EXAR Lutton 1831
+74-51 Changing Time 060
 +Grandview Womack Miss 7172

EXAR Sudden Impact 1537
+J&J Dixie Erica 443
 Dixie Erica of R R 7530

#+Northern Improvement 4480 GF
 EXAR Saras Dream 9809
 #Twin Valley Precision E161
 +Grandview Womack Miss 1900

#+Northern Improvement 4480 GF
 +B L R Blushing Pride 9097
 #E&B 1483 Scotchman 5041
 #Dixie Erica of R R 3506

EPDS: CED I+8, BW I+2.3, WW I+45, YW I+84, MILK I+25, MRB I+.29, REA I+.47, \$B +96.11
 Flawless structured, high hipped daughter of the 2013 NWSS Reserve Champion Angus bull, Changing Times. This heifer descends from one of our all-time favorite donors, RR Dixie Erica 7530 "Bob." 4538 stood second in class at the 2015 National Junior Angus Show in Tulsa.

• Sells safe to J&J Avant Garde 211. Due to calve 2/9/17.



47 | J&J Ever Entense 145

angus | dob: 3/8/15 • aaa: +18464688 • tattoo: 145

Dameron First Class
+EXAR Blue Chip 1877B
 +Greens Princess 1012

#BR Midland
+Limestone Ever Entense S292
 +Shadybrook Ever Entense 491G

EXG RS First Rate S903 R3
 Dameron Northern Miss 3114
 Greens Premium 7578
 Greens Princess 7418

#Twin Valley Precision E161
 BR Royal Lass 7036-19
 #Traveler 124 G D A R
 Sitz Everelda Entense 1137

EPDS: CED I+7, BW I+2.1, WW I+57, YW I+90, MILK I+28, MRB I+.43, REA I+.17, \$B +63.62
 A young daughter of donor Ever Entense S292. The buyer who takes home this sound footed, athletic, deep flanked bred heifer can bank on owning a fertile, pretty uddered cow for years to come. Flush sister sells as Lot 48. Maternal sister sells as Lot 17.

• Sells safe to BC II Skyfall 2812. Due to calve 3/12/17.

Limestone Ever Entense S292
 dam of Lots 47 & 48



48 | J&J Ever Entense 125

angus | dob: 2/23/15 • aaa: +18464689 • tattoo: 125

Dameron First Class
+EXAR Blue Chip 1877B
 +Greens Princess 1012

#BR Midland
+Limestone Ever Entense S292
 +Shadybrook Ever Entense 491G

EXG RS First Rate S903 R3
 Dameron Northern Miss 3114
 Greens Premium 7578
 Greens Princess 7418

#Twin Valley Precision E161
 BR Royal Lass 7036-19
 #Traveler 124 G D A R
 Sitz Everelda Entense 1137

EPDS: CED I+7, BW I+2.1, WW I+57, YW I+90, MILK I+28, MRB I+.43, REA I+.17, \$B +63.62
 An embryo sib to the heifer lotted as 47, 125 will make a problem-free cow. Her body type, correct skeleton and appealing pedigree tabulation offer a variety of mating options. Maternal sister sells as Lot 17.

• Sells safe to BC II Skyfall 2812. Due to calve 2/28/17.

EXAR Blue Chip 1877B
 sire of Lots 47 & 48

✓ Fall Yearling Open Angus Heifers

49

J&J Royal Lass 541

angus | dob: 9/15/15 • aaa: +18505087 • tattoo: 541

Dameron First Class
+EXAR Blue Chip 1877B
 +Greens Princess 1012

#S A V Brilliance 8077
J&J CAR Royal Lass 164
 +Limestone Royal Lass T849

EXG RS First Rate S903 R3
 Dameron Northern Miss 3114
 Greens Premium 7578
 Greens Princess 7418
 #+S A V Bismarck 5682
 S A V Blackcap May 5270
 #Stevenson Moneymaker R185
 +Limestone Royal Lass N702

EPDs: CED +1.7, BW +2.2, WW +64, YW +101, MILK +23, MRB +.39, REA +.28, \$B +82.31

A full or maternal sister to the halter prospects featured as Lots 6, 7 and 8, 541 is a powerful, productive cow in the making. Sound footed with extra rib, muscle and width.

- Sells open.



50

J&J Blackcap 539

angus | dob: 9/2/15 • aaa: 18506138 [DDP] • tattoo: 539

+Dameron First Impression
+FB Catalyst 3032 of J&J
 +EXAR Princess 6414

EXAR Upshot 0562B
J&J Blackcap 345
 +J&J Blackcap 044

#S A V Brilliance 8077
 Dameron Northern Miss 3114
 #EXAR Lutton 1831
 +Greens Princess 1012
 #Sitz Upward 307R
 #+EXAR Barbara T020
 #+Rito 6EM3 of 4L1 Emblazon
 2 Bar New Design 1407 3352

EPDs: CED +7, BW +1.8, WW +54, YW +96, MILK +25, MRB NA, REA NA, \$B NA

Wide pin setting in this Catalyst daughter—the first natural calf of the cow selling as Lot 16.

- Sells open.



51

J&J Lass 560

angus | dob: 12/17/15 • aaa: 18501832 • tattoo: 560

+Dameron First Impression
+FB Catalyst 3032 of J&J
 +EXAR Princess 6414

#S A V Net Worth 4200
+Great One H189
 J&J 410 Lass 710

#S A V Brilliance 8077
 Dameron Northern Miss 3114
 #EXAR Lutton 1831
 +Greens Princess 1012
 #S A V 8180 Traveler 004
 +S A V May 2410
 #TC Total 410
 Blackjacks Lass 270R

EPDs: CED -4, BW +4.9, WW +57, YW +98, MILK +25, MRB +.34, REA +.33, \$B +98.48

A December prospect with a powerful build. 560 is deep flanked, wide, thick and feminine. Her dam sells as Lot 20.

- Sells open.



Great One H189
 dam of Lot 51...sells as Lot 20

✓ Commercial Cows



52 | J&J Red Baldy 657

crossbred | dob: 2006 • commercial • tag: 657

Simmental x Hereford

A wide built, structurally sound power cow that has been worked five times in IVF, producing 44 embryos. There is a great set of spring- and summer-born ET calves produced by this cow currently being raised at TransOva which we will feature in future J&J events.

- Sells safe to MF Hard to Get. Due to calve 3/29/17.



MF Hard to Get
service sire to Lot 52

Lots 53 through 61 are a set of commercial cows purchased within the past calendar year from TransOva as pregnant three- to seven-year-old recipis. Each one did a great job of raising an ET calf during the past few months.

They all sell bred to J&J Avant Garde 211 — respective calving dates are listed. We offer them for sale as bred commercial cows with confidence that they will do as good a job for you as they did for us.

All TransOva recipis are tested for the following: Johnes, Leukosis, BVD, Brucellosis, Anaplasmosis and Neospora.

53 | Tag 365

crossbred | commercial

- Sells safe to J&J Avant Garde 211. Due to calve between 10/1/16 and 10/31/16.

54 | Tag 360

crossbred | commercial

- Sells safe to J&J Avant Garde 211. Due to calve between 3/1/17 and 5/15/17.

55 | Tag 368

crossbred | commercial

- Sells safe to J&J Avant Garde 211. Due to calve between 3/1/17 and 5/15/17.

56 | Tag 902

crossbred | commercial

- Sells safe to J&J Avant Garde 211. Due to calve between 3/1/17 and 5/15/17.

57 | Tag 370

crossbred | commercial

- Sells safe to J&J Avant Garde 211. Due to calve between 3/1/17 and 5/15/17.

58 | Tag 371

crossbred | commercial

- Sells safe to J&J Avant Garde 211. Due to calve between 3/1/17 and 5/15/17.

59 | Tag 372

crossbred | commercial

- Sells safe to J&J Avant Garde 211. Due to calve between 3/1/17 and 5/15/17.

60 | Tag 359

crossbred | commercial

- Sells safe to J&J Avant Garde 211. Due to calve between 3/1/17 and 5/15/17.

61 | Tag 362

crossbred | commercial

- Sells safe to J&J Avant Garde 211. Due to calve between 3/1/17 and 5/15/17.

62 | Tag A114

angus | dob: 2013 • commercial Angus

- Sells safe to J&J Avant Garde 211. Due to calve between 3/1/17 and 5/15/17.

✓ Thank You to these J&J Suppliers!

VitaFerm®
Concept•Aid®

WHAT'S ONE MORE WORTH

VitaFerm® Concept•Aid® is a line of highly bioavailable vitamin and mineral supplements for beef cattle with the Amaferm® advantage to increase fertility and conception rates resulting in **MORE CALVES**. When used at least 30 days prior to calving through breeding, the formulas support quick repair of the reproductive tract, faster breed back and increased milk production for calf vigor and growth potential.

FOR MORE INFORMATION, CONTACT:
VITAFERM® AREA SALES MANAGER JOHN JEFFREY • 816-344-5738



J&J CATTLE CO. IS PROUD TO FEED SURE CHAMP

VITAFERM PERFORMANCE THAT PAYS



QUALITY

Show supplies that work as hard as you do.

Visit our website to order online

or find a retailer near you:

www.thewinnersbrand.com



KIRK, JULI, KY & KYRA STIERWALT
8501 Highway 34, Leedey, OK 73654

Kirk: 580-302-3009

Juli: 580-302-3006

Home: 580-488-3625

www.kirkstierwalt.com

*Be sure to join us for the
Stierwalt Cattle Clinic*

*...2:30 p.m., Sunday, September 4th
at J&J Cattle Company!*

...12 noon, Monday, September 5th * Orlando, Oklahoma

✓ Thank You to these J+J Suppliers!



RumaFILL™

Get your fill on!

"RumaFILL™ keeps our show cattle fresh looking and full bodied. We use it year-round in our feeding program."

Mark Johnson



Add rib and body for a competitive edge.



Charley Johnson – 2015 National Western Stock Show Champion Charolais



Sydney Johnson – 2014 Oklahoma Youth Expo Reserve Angus Heifer Bred and Owned

This special high-fiber, mini-pelleted, top-dress supplement for ruminants possesses the unique ability to expand the rumen, creating fullness and heightened expression.

No. 81080AAAE4

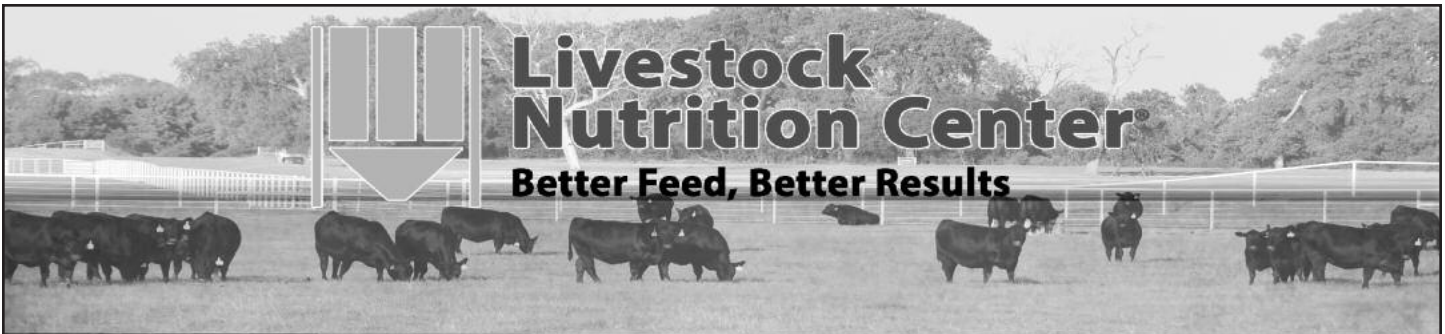
Contact:

James Scifres – 580-450-5611

Dr. Brian Fieser – 405-269-9143



www.admani.com/MoorMansShowTec • 866-666-7626 • AN_ShowFeedHelp@adm.com



Livestock Nutrition Center

Better Feed, Better Results

Sale Day
Lunch Sponsor



Livestock Nutrition Center
Better Feed, Better Results

Livestock Nutrition Center Locations

ALTUS, OK
CHICKASHA, OK
GUTHRIE, OK
KEOTA, OK
FOREMAN, AR

580.482.2700
405.561.2900
405.260.1841
918.208.0029
870.542.5250

HEREFORD, TX
PARIS, TX
SAGINAW, TX
N. KANSAS CITY

806.391.1001
903.784.6656
817.232.8161
913.725.0300

Multiple locations to better serve - contact us for additional information

LNC-ONLINE.COM

©2016 Livestock Nutrition Center. All Rights Reserved.

**Congratulations
to our
Customers!**



J&J Power Move 85

13-time Supreme Champion Bull and Show Bull of the Year, Arkansas Junior Cattlemen's Assn. *Congratulations to January Tweedy, Imboden, AR!*



J&J Royal Lass 422

Class winner, 2015 NJAS and American Royal; Third Overall Heifer, 2016 OYE. *Congratulations to Schnoor Sisters, Chowchilla, CA!*



J&J Angelina 215

Division champion, 2016 AIJCA Junior National. *Congratulations to Whitney Walker, Prairie View, AR!*



J&J Firegirl 552

Class winner, 2016 AIJCA Junior National. *Congratulations to Madison Henderson, Perry, OK!*



J&J Ever Entense 519

Grand Champion Owned Female, 2016 Kentucky Junior Angus Show. *Congratulations to Carolyn Cowles, Rockfield, KY!*



J&J Ever Entense 401

Many-time champion in Nebraska and class winner at the 2015 NJAS. *Congratulations to Miles Stagemeyer, Page, NE!*



J&J Ever Entense 165

Many-time champion on the Oklahoma junior circuit. *Congratulations to Jackson Ray, Holdenville, OK*



J&J Ever Entense 105

Class winner at two Texas majors—San Antonio and Houston. *Congratulations to Tyler Autry, Center, TX!*



J&J Lass 463

Supreme Champion 3 times, Reserve Supreme once and breed champion 3 times in Georgia. *Congratulations to Cameron Carver, Douglas, GA!*



J&J Queen 514

Division champion, 2016 OYE. *Congratulations to Steve Gilbert and John Nelson, OK!*

J&J Class Act 155
Many-time champion in Arkansas, including Reserve Champion Angus Bull at the 2016 Arkansas State Show and Champion Owned Bull at the 2016 Arkansas Junior Angus Preview Show. *Congratulations to Emily Woodard, Blackrock, AR!*



Thank you for your support!



FIRST CLASS MAIL
Time Sensitive: Please Do Not Delay

22755 N. Douglas Blvd.
Orlando, OK 73073

Southwest TypeStyles
405.381.3591 



Videos of halter prospects online:
www.jandjcattle.com

