



J&J
CATTLE CO.

THIRD ANNUAL
Production Sale

Saturday, May 10, 2008

1:00 p.m. • At the Ranch

Orlando, Oklahoma

75 Angus Lots

SHOW & DONOR PROSPECTS • ELITE HEIFER CALF PREGNANCIES
BRED HEIFERS • SPRING COW/CALF PAIRS • HERD SIRE PROSPECTS



THIRD
ANNUAL

Production Sale

Saturday, May 10, 2008
Orlando, Oklahoma

75 Registered Angus Lots ...

At J&J Cattle Company, located on the south side of State Highway 51,
just 1-1/2 miles west of Interstate 35 (Exit 174). Look for our signs and the red barn on top of the hill.

Friday, May 9, 2008

1:00 p.m. until dark — Cattle on display
... Food and beverages available

6:00 to 9:00 p.m. —

Join us for heavy hors d'oeuvres and beverages

Saturday, May 10, 2008

7:30 a.m. — Coffee, juice and pastries

9:00 a.m. — Cattle on display

11:30 a.m. — Lunch served

1:00 p.m. —

Third Annual J&J Cattle Company Production Sale

Recommended Hotels

Make reservations early and mention the J&J sale to receive special rates.
Sleep Inn & Suites, 414 Heather Road, Guthrie, OK, (405) 260-1400—
easy access from I-35 Exit 157, approx. 17 miles south of the ranch.
Quality Inn, 2515 West 6th Avenue, Stillwater, OK, (405) 372-0800—
approx. 17 miles east of the ranch on Hwy. 51.

Air Transportation

Will Rogers World Airport in Oklahoma City is 45 minutes from the ranch
and is served by most major airlines. For assistance with travel arrange-
ments, please call Brenda Johnson, (405) 880-5887.

Special Sale Guests

Scott Dewald, Exec. Vice President, Oklahoma Cattlemen's Assn.
Jarold Callahan, Director, American Angus Assn.
Chuck Stewart, President, Oklahoma Angus Assn.
Carol Smith, Vice President, Oklahoma Angus Assn.
Dr. Robert Whitson, Vice President, Dean and Director,
OSU College of Agricultural Sciences and Natural Resources
Dr. Ron Kensinger, Head, OSU Department of Animal Science
Drs. Robert Totusek & Donald Wagner, Heads Emeritus,
OSU Department of Animal Science
Jeff Mafi, Manager, OSU Purebred Beef Herd

Sale Staff

Eddie C. Sims, Auctioneer, (580) 595-1626
Matt Caldwell, Angus Journal, (785) 228-1364
A.J. Smith, Oklahoma Cowman, (405) 235-4391; (405) 641-5721
Chisolm Kinder, Oklahoma Cowman, (405) 747-4683
Doug Paul, The Stock Exchange, (405) 820-3982
John Andras, Weekly Livestock Reporter, (817) 789-7352
Wade Perks, The Cattleman, (817) 269-9263
Juston Stelzer, Special Assignment, (817) 992-7059

Sale Consultant

Cindy Pribil, (405) 853-5232

Acknowledgements

Sale Photography—Matt Sims, (405) 641-6081
Sale Advertising—The Cowboy Connection, (580) 332-7480
Sale Catalog—Southwest TypeStyles, (405) 381-3591

Sale Managers



Absentee Bids

If you would like to place a bid on any lot but will not be able to be with us
sale day, you may join us online at www.LiveAuctions.tv. You may also di-
rect your phone bid to the ranch, the sale manager, sale consultant, or any
other member of the sale staff, listed above.

Livestock Transportation

Livestock haulers believed to be reliable will be available to assist you in
shipping your purchases. We recommend that insurance be obtained on
lots purchased, which will be available at the clerk's desk.

Sale Terms and Conditions

Cattle will sell under Suggested Terms and Conditions of the American
Angus Association, listed on page 31. We reserve the right to withdraw any
sale lot not meeting our specifications prior to sale time.

Herd Health

All cattle will be accompanied by proper health certificates for immediate
interstate shipment. All calves are wormed and vaccinated with a 7-way
Clostridial, 4-way for BVD, IBR, PI3 and BRSV, and Pasteurella Bacterin
Toxoid by three months of age and again at weaning. All females of age are
officially calfhooed vaccinated. Yearling heifers and the cow herd are
wormed and vaccinated twice annually with a 7-way Clostridial, 4-way for
BVD, IBR, PI3 and BRSV, and Lepto/Vibrio with Spirovac®. All cattle sell-
ing are up to date on vaccinations and worming.

Breeding Information

The yearling heifers and most of the spring-calving cows will have been
bred AI by sale day but are not being sold as safe in calf. An updated breed-
ing/calving report will be available sale day. Announcements made from the
auction block will take precedence over all printed material.



WELCOME TO J&J!



Mark & Brenda Johnson, Sydney & Charley
Ken & June Jackson
23001 N. Douglas, Orlando, OK 73073
(405) 880-1902, Cell
(580) 455-2256, Home & Fax
info@jandjcattle.com, E-mail
www.jandjcattle.com, Web site



Mark Johnson, left, and Ken Jackson
... J&J owners

Dear Friends:

We take this opportunity again this year to personally invite you to join us on Saturday, May 10, 2008 for our third annual J&J Production Sale here at the ranch near Orlando, Oklahoma. We have experienced interesting times since our last sale. We have gone from drought to record amounts of moisture over the past 12 months and have seen the price of feedstuffs like hay come down while the value of cereal grains and fertilizer has increased dramatically. Through it all, we have been very pleased to see and hear of our customers' success with the cattle they have purchased from J&J through our first two sales—success that has occurred both in performance testing and in the show ring. At the time of this writing, the first set of J&J Double Take 550 calves—born last spring in three herds—recorded average ratios of 96 at birth, 102 at weaning and yearling, 100 for IMF and 103 for ribeye. Among the highlights in this sale is an excellent set of Double Take offspring, most of which are spring-born calves selling at the side of their dam.

This sale features many of the most elite cow families in the Angus breed and a set of females that could serve as the foundation of any herd. Included are a tremendous set of young, productive cows with spring-born calves and a set of heifers that will favorably compare to any you can find. This year, for the first time, we are also offering a group of herd sire prospects for your inspection, all of which sell with our breeding soundness guarantee. We remain committed to our long-term goal of producing cattle that not only read well on paper in regard to breed-leading pedigrees and genetic tabulations but as well represent the visual characteristics of productive, functional cattle with growth, genuine composition and quality.

As always, there are many people deserving of thanks for their assistance in getting this sale offering together. LaRue Switzer, Cindy Pribil, Bill Lackey and "Cool Hand" Lucas Reinhart of A-Cross Ranch for the excellent set of cattle they have contributed to this sale and their continued partnership. To Matt and Eddie Sims, and their respective teams at MCS and NCS, for their expertise and professionalism. We have also been fortunate to have an outstanding work force led by Greg Williams, Dodge Nichols and Wes Curry (none of whom can play liar's poker very well but are all pretty good stock hands). Thanks especially to our customers; without you we could not continue to do what we enjoy so much—raising cattle.



L-R: Charley, Brenda, Sydney and Mark Johnson

Thanks to each of you for the time you are taking to look through this catalogue and check out our program. We welcome your visit anytime. The sale cattle are all here near the sale barn and ready for viewing at your convenience.

Sincerely,
Mark
Mark Johnson

Ken
Ken Jackson

SALE DAY PHONES:

Mark Johnson cell (405) 880-1902

Matt Sims cell (405) 641-6081

Eddie Sims cell (580) 595-1626

GUEST CONSIGNOR:

A-CROSS RANCH

P. O. Box 765, Elk City, OK 73648

LaRue Switzer, Owner • Bill Lackey, Commercial Cow Herd
Lucas Reinhart, Registered Cow Herd • Cindy Pribil, Herd Consultant
(405) 853-5232, Cell • (405) 853-6544, Home



A J&J DOUBLE TAKE 550

Calved: 3/02/2005 • Bull: +15132206

EXAR New Look 2971
+14230122
#Bon View New Design 1407
N Bar Primrose 2424

PF E161 Bardolena 3153
+14428533
#Twin Valley Precision E161
GK Betsy Bardolena 323A

#B/R New Design 036
Bon View Pride 664
#Emulation 31
Primrose N Bar 9962
#GAR Precision 1680
+WCC Blackcap C9
Bardolene of Peak Dot 204R
SPA Primeline Princess C401

BW EPD	WW EPD	YW EPD	SC EPD	MILK EPD	%IMF EPD	UREA EPD
+1.2	+51	+93	I +.40	+20	I +.24	I +.52

High selling lot in our 2006 sale. To date, Double Take has been used in three herds and his offspring are averaging the following ratios: 96 at birth, 102 at weaning, 102 at yearling, 100 for IMF and 103 for REA.

SWEAN	SFEEDLOT	SGRID	SBEEF
+28.69	+32.54	+19.31	+45.23

B BASIN FRANCHISE P142

Calved: 2/17/2004 • Bull: 14686137

CA Future Direction 5321
#12493607
#GAR Precision 1680
CA Miss Power Fix 308

Basin Chloe 812L
13850607
#Gardens Expedition
Basin Chloe 6198

#Tehama Bando 155
9J9 GAR 856
#+SAF Power Fix
CA Lady Eight 1015
#N Bar Emulation EXT
Green Garden Gina 2268 S2
#Basin Ambush 3905
Basin Chloe 938F

BW EPD	WW EPD	YW EPD	SC EPD	MILK EPD	%IMF EPD	UREA EPD
-0.2	+44	+85	+17	+25	+63	+87

AI sire.

SWEAN	SFEEDLOT	SGRID	SBEEF
+29.43	+27.14	+32.84	+55.06



J&J Double Take 550
Herd sire for J&J and A-Cross Ranch



C TC TOTAL 410

Calved: 1/16/2004 • Bull: 14844711

Bon View New Design 208
#13044574
#B/R New Design 036
#Bon View Erica 443

TC Erica Eileen 2047
+14270867
#Twin Valley Precision E161
#TC Erica Eileen 5116

#VDAR New Trend 315
B/R Blackcap Empress 76
#N Bar Emulation EXT
#Bon View Erica 1380
#GAR Precision 1680
+WCC Blackcap C9
#+Leachman Right Time
TC Erica Eileen 6006

BW EPD	WW EPD	YW EPD	SC EPD	MILK EPD	%IMF EPD	UREA EPD
+3.8	+75	+135	+73	+35	+51	+92

AI sire.

SWEAN	SFEEDLOT	SGRID	SBEEF
+30.54	+68.26	+28.09	+64.55

E J&J NEW DESIGN G114

Calved: 3/18/2006 • Bull: +15507105

Bon View New Design 1407
#12783540
#B/R New Design 036
Bon View Pride 664

J&J Queenie 9206
+13412890
#+A&B Yukon 7150
C&C Queen 418

#VDAR New Trend 315
B/R Blackcap Empress 76
#+GAR Sleep Easy 1009
#Bon View Pride 1551
#Krugerrand of Donamere 490
+A&B Queen 4173
Bando of Conanga 573
WK Queen 2147

BW EPD	WW EPD	YW EPD	SC EPD	MILK EPD	%IMF EPD	UREA EPD
I +2.5	I +48	I +97	I +.16	I +21	+33	+23

Pasture exposure sire for J&J, now owned by Joe Bush.

SWEAN	SFEEDLOT	SGRID	SBEEF
+23.31	+37.92	+21.59	+48.13

D STEVENSON MONEYMAKER R185

Calved: 2/16/2005 • Bull: 15003238

Boyd On Target 1083
13828202
#+SAF 598 Bando 5175
+Boyd Forever Lady 7095

Stevenson Clova Pride L888
#13801184
VDAR Ambush 2478
Stevenson Clova Pride 712H

#Bon View Bando 598
+SAF Royal Lass 1002
#DHD Traveler 6807
SVF Forever Lady 57D
#+VDAR Ambush 1465 SAF
#VDAR Polly 814
#Krugerrand of Donamere 490
Stevenson Clova Pride 914C

BW EPD	WW EPD	YW EPD	SC EPD	MILK EPD	%IMF EPD	UREA EPD
+3.3	+62	+112	+87	+23	+10	+26

AI sire.

SWEAN	SFEEDLOT	SGRID	SBEEF
+27.68	+48.15	+7.71	+40.43

F J&J FUTURE DIRECTION 555

Calved: 3/19/2005 • Bull: +15131154

CA Future Direction 5321
#12493607
#GAR Precision 1680
CA Miss Power Fix 308

OSU 6079 Racquel 8176
+13068513
#N Bar Emulation EXT
+DF Empress 6079

#Tehama Bando 155
9J9 GAR 856
#+SAF Power Fix
CA Lady Eight 1015
#Emulation N Bar 5522
N Bar Primrose 2424
#Pine Drive Big Sky
KAF Miss Jetliner 641 1B4

BW EPD	WW EPD	YW EPD	SC EPD	MILK EPD	%IMF EPD	UREA EPD
I +0.9	I +38	I +69	I -.39	I +27	I +.45	I +.64

Herd sire for A-Cross Ranch. A maternal brother sells as Lot 73.

SWEAN	SFEEDLOT	SGRID	SBEEF
+28.29	+13.66	+28.87	+46.26



Real-time bidding will be available via the internet for the J&J Production Sale. Live audio and live video will allow buyers to bid on animals just as if they were present at the auction. Buyers must create an account prior to the sale. Please visit www.LiveAuctions.tv to create an account. Follow the instructions there to create your account, or contact Brad Fahrmeier at (816) 392-9241, or e-mail brad@LiveAuctions.tv

Lots 1, 2 & 3 represent the opportunity to invest in the Angus breed's most powerful, highest revenue generating, most proven cow family for carcass merit, \$Beef and multi-trait excellence!



GAR SCOTCH CAP 867

This Pathfinder Dam is the maternal grandam of the powerful donor represented by the Lot 1 females and the matriarch of the famous "Blackcap" family.



GAR PRECISION 2536

The highest \$Beef cow in the Angus breed and maternal grandam of the donor represented in Lot 2. 2536 is the all-time highest income producing female in the breed, with over \$6 million in offspring sales.



GAR PRECISION 706

Dam of the donor featured as Lot 3 and a full sister in blood to 2536. 706 was the top selling cow of a past sale at Gardiner Angus Ranch, and her offspring—including such popular AI sires as Three Trees Next Step and Dr. J Analyst as well as 42 daughters that maintain a combined nursing ratio of 103 on 61 natural calves—have generated over 1.5 million in sales!

BLACKCAP 3352 PROGENY



2 Bar New Design 1407 3352 — Dam of Lots 1A-1B

This foundation J&J Blackcap combines powerful phenotype with an impressive set of actual performance records. As an individual, 3352 earned ratios of 117 at weaning and 110 as a yearling and scanned with ratios of 132 for IMF and 120 for REA. Her impressive individual performance is backed by ratios of 89 at birth, 118 at weaning and 110 for yearling weight on her first natural calf. Eleven offspring evaluated by ultrasound have averaged 110 for IMF and 101 for REA.

This cow not only reads impressive in pedigree—representing the famous Blackcap cow family and being an own daughter of the now deceased curve-bending Pathfinder Sire New Design 1407—but as importantly she represents functional phenotype. 3352 is wide based, big ribbed, thick topped, sound and athletic. This cow is an important part of the present and future plans at J&J and A-Cross, and the females represented in Lots 1A and 1B have unlimited potential.

1A

J&J BLACKCAP 839

Calved: 2/15/2008 • Cow: Reg. Pending • Tattoo: 839

#SS Traveler 6807 T510 13776378	#DHD Traveler 6807 #SS Miss Hi Spade A114 SS Rito Rito R76 R011 SS Miss Ultress U56
#Bon View New Design 1407 14514522	#B/R New Design 036 Bon View Pride 664 #GAR Traveler 1489 #GAR Scotch Cap 867
SS Objective T510 OT26	
SS Miss Rita R011 R78	
2 Bar New Design 1407 3352	
+GARLD 1489 Traveler 900	

BW EPD	WW EPD	YW EPD	SC EPD	MILK EPD	%IMF EPD	UREA EPD
+0.8	+57	+102	+0.8	+27	+53	+49

It is rare to find cattle that combine a proven pedigree and a productive, functional look with the multi-trait genetic excellence that this heifer calf uniquely ties together. 839 offers a genetic profile that is most impressive when evaluated collectively and highlighted by YW and \$Beef values ranking well into the best 2% of non-parent females. Her sire is the popular and proven big spread, high \$Beef sire SS Objective T510 OT26. 839's full sister and the first natural calf of the donor featured in Lot 1, 2 Bar Objective 5526, ranks 92nd in the breed for \$W compared to 126,681 females and sold for \$11,000 as a feature in the 2007 Prime Design Female Sale hosted by 2 Bar Angus and Goode Angus. Co-owned with A-Cross Ranch.

- Sells open. Selling full interest at weaning.

1B

HEIFER CALF PREGNANCY

Due: 1/18/2009 • Progeny Pedigree

#Emulation N Bar 5522	#Emulation 31
N Bar Primrose 2424	Ankony 8F78 Lass 8F275
	#Emulation 31
	Primrose N Bar 9962
#Bon View New Design 1407	#B/R New Design 036
2 Bar New Design 1407 3352	Bon View Pride 664
14514522	#GAR Traveler 1489
+GARLD 1489 Traveler 900	#GAR Scotch Cap 867

BW EPD	WW EPD	YW EPD	SC EPD	MILK EPD	%IMF EPD	UREA EPD
S: +1.9	+43	+80	-.36	+18	S: +.23	+29
D: +0.6	+43	+77	+24	+32	D: +.50	+46

A unique embryo mating of the legendary Pathfinder Sire EXT to the foundation Blackcap donor in the J&J and A-Cross programs, 3352. The mating represented here offers the type of "can't-miss" genetics that will have long-term earning power. Co-owned with A-Cross Ranch.

- Selling a sexed heifer calf pregnancy due 1/18/2009.

SWEAN	SPEEDLOT	SGRID	SBEEF
S: +28.43	+22.51	+10.67	+34.26
D: +34.82	+19.55	+28.46	+45.94



Rita 1197 of 2536 Rito 616 —
 Flush sister to the dam of the donor of the pregnancies selling as Lots 2A and 2B and full sister to the sire of the pregnancy selling as Lot 3. This record-setting female sold for \$400,000 for half interest in the 2008 Bases Loaded Sale during the National Western.



GAR Predestined — Sire of the pregnancy selling as Lot 2A ... No. 2 \$Beef bull in the Angus breed!



B/R 65R Genesis — Sire of Lot 2B pregnancy

2A HEIFER CALF PREGNANCY

Due: 1/18/2009 • Progeny Pedigree

GAR Predestined
 #13395344

#B/R New Design 036
 #+GAR EXT 4206

#VDAR New Trend 315
 B/R Blackcap Empress 76
 #N Bar Emulation EXT
 +GAR 6807 Traveler 1432

Three Trees Blackcap 3279
 +14519262

#Bon View New Design 1407
 +Davis Blackcap 0100

#B/R New Design 036
 Bon View Pride 664
 #Rito 616 of 4B20 6807
 GAR Precision 2536

BW EPD	WW EPD	YW EPD	SC EPD	MILK EPD	%IMF EPD	UREA EPD
S: +4.0	+53	+99	+27	+28	S: +.76	+81
D: +1.3	+50	+94	-11	+31	D: +.39	+58

An exciting heifer calf pregnancy with tremendous upside! Sired by the No. 2 \$Beef Angus sire, GAR Predestined, and out of a productive, correctly structured, maternal granddaughter of the highest income producing cow in the Angus breed, 2536. 3279 is a low birth, big spread female who ranks in the best 4% of active dams for IMF, the best 3% for YW and REA and the best 1% for \$Beef.

\$WEAN	\$FEEDLOT	\$GRID	\$BEEF
S: +29.80	+37.98	+34.49	+66.52
D: +30.20	+33.98	+26.11	+51.66

- Selling a sexed heifer calf pregnancy due 1/18/2009.

2B HEIFER CALF PREGNANCY

Due: 8/28/2008 • Progeny Pedigree

B/R 65R Genesis
 14385395

#CA Future Direction 5321
 B/R Blackcap Empress 127

#GAR Precision 1680
 CA Miss Power Fix 308
 #B/R Destination 727
 #B/R Blackcap Empress 8183

Three Trees Blackcap 3279
 +14519262

#Bon View New Design 1407
 +Davis Blackcap 0100

#B/R New Design 036
 Bon View Pride 664
 #Rito 616 of 4B20 6807
 GAR Precision 2536

BW EPD	WW EPD	YW EPD	SC EPD	MILK EPD	%IMF EPD	UREA EPD
S: +2.6	+55	+99	+01	+28	S: +.84	+46
D: +1.3	+50	+94	-11	+31	D: +.39	+58

A heifer calf pregnancy out of the J&J foundation Blackcap 3279 and sired by the increasingly popular B/R Genesis, who among proven sires currently ranks No. 5 for IMF and 12th for \$Beef Index. Genesis, an own son of the proven Pathfinder Sire Future Direction, descends from the famous Blackcap Empress family bred by Bill Rishel. A dynamic mating offering tremendous genetic lead for carcass quality.

\$WEAN	\$FEEDLOT	\$GRID	\$BEEF
S: +29.29	+37.17	+32.09	+60.97
D: +30.20	+33.98	+26.11	+51.66

- Selling a sexed heifer calf pregnancy due 8/28/2008.



Choice of pregnancies out of the J&J and A-Cross foundation Blackcap "3305"

3 BUYER'S CHOICE PREGNANCY

Due: 10/16/2008 • Progeny Pedigree

Rito 112 of 2536 Rito 616
 #Rito 616 of 4B20 6807
 #13793826
 #BR Midland
 #DHD Traveler 6807
 +Rita 4B20 of OFB1 Bando
 #GAR Precision 1680
 +GAR EXT 2104
 #Twin Valley Precision E161
 BR Royal Lass 7036-19
 #GAR Precision 1680
 +GAR EXT 2114

VAR Precision 3305
 #BR Midland
 #14579171
 GAR Precision 706

BW EPD	WW EPD	YW EPD	SC EPD	MILK EPD	%IMF EPD	UREA EPD
S: +2.2	+64	+112	-.43	+24	S: +.58	+01
D: +0.7	+44	+ 82	-.27	+21	D: +.68	+60

The featured donor dam of the Lot 3 pregnancy and direct daughter of 706 is more than simply the daughter of a famous cow, as she has a tremendous individual and progeny production record. As a single contemporary yearling, 3305 scanned with over 8% IMF and had a REA of 11.4 square inches at 922 pounds. Her two natural calves have balanced an average birth ratio of 92 with a weaning ratio of 102 and a yearling ratio of 101. Eleven offspring evaluated by ultrasound have averaged 111 for IMF and 105 for REA. Among current dams, this Midland daughter currently

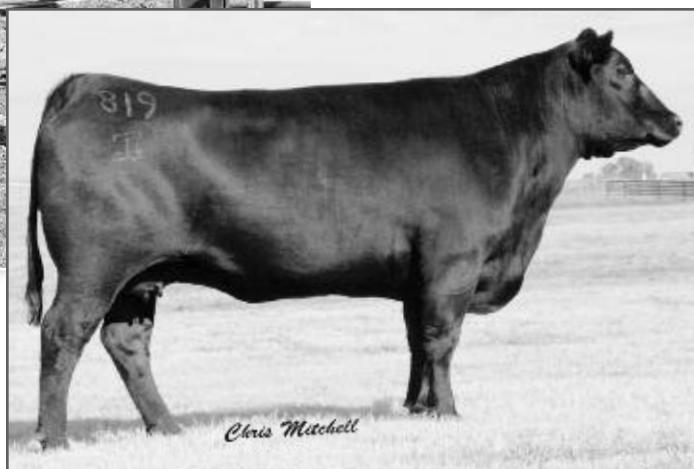
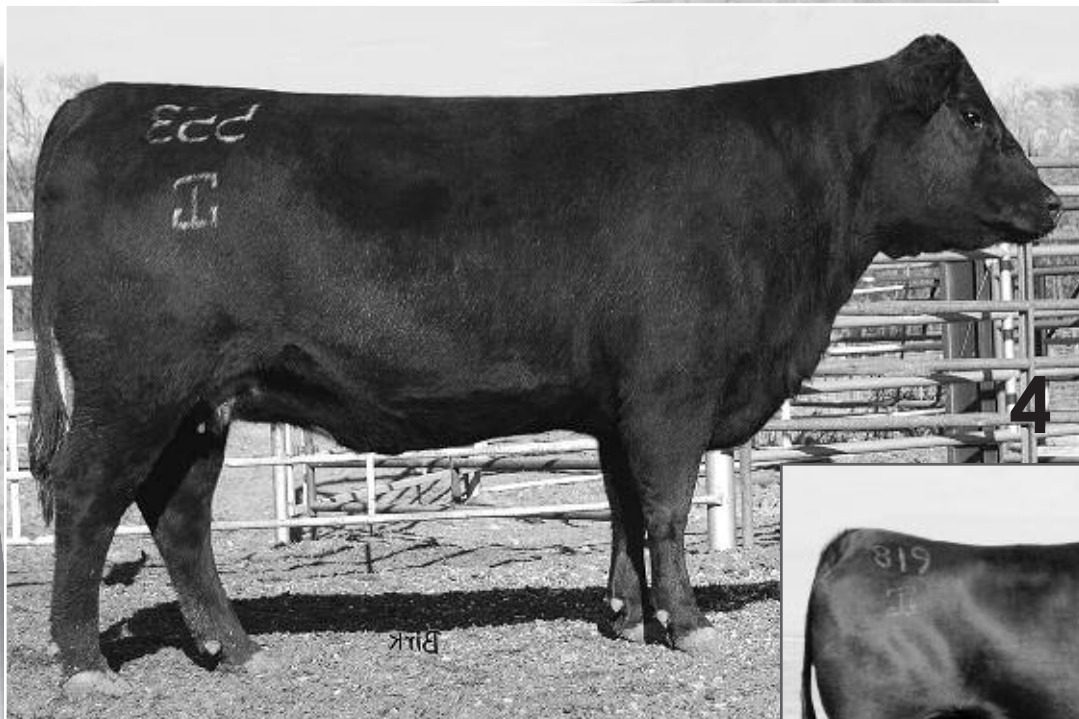
SWEAN	SPEEDLOT	SGRID	\$BEEF
S: +32.47	+47.30	+23.89	+55.71
D: +26.67	+24.12	+31.62	+52.26



Rito 112 of 2536 Rito 616 — Famous full brother to the dam of the donor of the pregnancies selling as Lots 2A and 2B and sire of the pregnancy selling as Lot 3 and the heifer calves selling as Lots 4A and 4B. This high IMF and \$Beef sire is acclaimed for his ability to sire functionally sound females with udder quality and depth of flank.

ranks in the best 15% for Birth and Yearling EPDs and couples this curve-bending potential with a ribeye predictor in the best 2% along with an IMF EPD and \$Beef Index in the best 1% of the breed. This is a great cow who has generated well over \$100,000 in progeny sales on her first five daughters sold. The mating represented here doubles up the Blackcap lines, tying full sisters-in-blood 706 and 2536 closely together for a genetic tabulation loaded with additive value for multi-trait superiority. Co-owned with A-Cross Ranch.

- **Selling buyer's choice of either one sexed heifer calf pregnancy or two sexed bull calf pregnancies. The buyer will have the option to double the bid and take all three pregnancies. Due date on all pregnancies is 10/16/2008.**



GAR Precision 819 — Dam of Lot 4 and maternal grandam of Lots 4A-4B

4 GAR 1407 NEW DESIGN 553

Calved: 8/15/2003 • Cow: +14506155 • Tattoo: 553

Bon View New Design 1407
#12783540

#B/R New Design 036
Bon View Pride 664

#VDAR New Trend 315
B/R Blackcap Empress 76
#+GAR Sleep Easy 1009
#Bon View Pride 1551

GAR Precision 819
+13397145

#GAR Precision 1680
+GAR 6807 Traveler 673

#Tehama Bando 155
9J9 GAR 856
#DHD Traveler 6807
+GAR Scotch Cap 199

BW EPD	WW EPD	YW EPD	SC EPD	MILK EPD	%IMF EPD	UREA EPD
+1.9	+47	+85	+27	+34	+26	+61

553 is a stout hipped, powerfully made cow whose mother, GAR Precision 819, was a past sale topping cow at Gardiner Angus Ranch at \$250,000. In the 2007 GAR sale, two full sisters to 553 sold for \$70,000 each while another sister, GAR 1407 New Design 523, sold in a past GAR sale for \$120,000 and is now a featured donor at Vintage Angus Ranch. A great opportunity to purchase a royally bred, highly productive donor that has averaged 14 embryos per flush over four flushes during the past year. Among current dams, 553 ranks in the best 10% for Weaning, Yearling and \$Beef and the best 2% for UREA.

• Breeding information available sale day.

SWEAN	SPEEDLOT	\$GRID	\$BEEF
+32.55	+25.97	+20.90	+42.62

Buyer's Choice Lots 4A & 4B:

Rito 112 of 2536 Rito 616
+13793826 GAR Precision 2536

#Rito 616 of 4B20 6807

#DHD Traveler 6807
+Rita 4B20 of 0FB1 Bando
#GAR Precision 1680
+GAR EXT 2104

GAR 1407 New Design 553
+14506155 +GAR Precision 819

#Bon View New Design 1407

#B/R New Design 036
Bon View Pride 664
#GAR Precision 1680
+GAR 6807 Traveler 673

BW EPD	WW EPD	YW EPD	SC EPD	MILK EPD	%IMF EPD	UREA EPD
+2.1	+56	+99	-.08	+29	+42	+31

Offering choice of two sensational flush sisters born February 4 and 5, 2008. These heifers are sired by Rito 112, the popular son of GAR Precision 2536 who excels in combining genetics for growth, maternal and IMF with a high \$Beef Index. In the 2007 sale at GAR, two full sisters in blood to these heifers sold for \$60,000 and \$50,000, while in the same sale two full sisters to their dam sold for \$70,000 each. Don't miss this opportunity to select your choice of these two females who descend from the great Rita 5H11 and represent a long line of females combining maternal and carcass excellence. Co-owned with John Freeman.

SWEAN	SPEEDLOT	\$GRID	\$BEEF
+32.50	+36.76	+24.70	+50.48

• Selling choice between 8002 and 8004. Buyer has the option of making selection at weaning or as yearlings after ultrasound data has been collected.

4A BLACKGOLD J&J PRECISION 8002

Calved: 2/04/2008 • Cow: +15966598 • Tattoo: 8002

BW 60 lbs.

• Sells open.

4B BLACKGOLD J&J PRECISION 8004

Calved: 2/05/2008 • Cow: +15966599 • Tattoo: 8004

BW 63 lbs.

• Sells open.



5 J&J BLACKBIRD 536

Calved: 2/23/2005 • Cow: +15131148 • Tattoo: 536

EXAR Lutton 1831
14035047

#Northern Improvement 4480 GF
EXAR Saras Dream 9809

#TC Stockman 365
Blackcap of RR 5367
#A&B Yukon 7150
+Saras Dream

PAF Blackbird 6665
12829409

#N Bar Emulation EXT
PAF Blackbird 4170

#Emulation N Bar 5522
N Bar Primrose 2424
#Tehama Bando 155
PAF Lady Cap 2028

BW EPD	WW EPD	YW EPD	SC EPD	MILK EPD	%IMF EPD	UREA EPD
+1.3	+43	+85	-1.45	+14	+12	+0.07
SWEAN	SFEEDLOT	SGRID	SBEEF			
+22.85	+27.53	+12.03	+34.46			

J&J Blackbird has been a favorite since she was a calf. She descends from one of our foundation donors, PAF Blackbird 6665, a cow that did a tremendous job for us here at J&J and was the producer of several past feature females in our first two sales. 536 is a cow for those who enjoy looking at cattle. She is flawless in her structural base, well balanced and stout in bone and muscle thickness. Her February heifer calf by Basin Franchise is an outstanding halter prospect. 536 was flushed once as a two year old and produced 18 No. 1 embryos—which resulted in a great set of February 2008 calves by Stevenson Moneymaker.

This cow offers a tempting variety of mating options. She is not only extremely hairy with the stoutness and correctness to make show cattle but also has a big spread from Birth to Yearling, an IMF EPD in the best 35% and a \$Beef Index in the best 25% of active dams. A great cow from a great cow family that is just reaching her prime.

- Sells open and ready to flush. 536 has been flushed twice for a total of 28 embryos.

5A Heifer calf born 2/18/2008, tattoo 841, by BASIN FRANCHISE P142. BW 62 lbs.



Real-time bidding will be available via the internet for the J&J Production Sale. Live audio and live video will allow buyers to bid on animals just as if they were present at the auction. Buyers must create an account prior to the sale. Please visit www.LiveAuctions.tv to create an account. Follow the instructions there to create your account, or contact Brad Fahrmeier at (816) 392-9241, or e-mail brad@LiveAuctions.tv



6A J&J QUEEN 7117

Calved: 3/16/2007 • Cow: +15858557 • Tattoo: 7117

BW EPD	WW EPD	YW EPD	SC EPD	MILK EPD	%IMF EPD	UREA EPD
I +2.8	I +45	I +88	I -.05	I +19	I +.23	I +.08

• Sells open.

SWEAN	SPEEDLOT	\$GRID	\$BEEF
+22.44	+29.80	+17.84	+41.99

6B J&J QUEEN 797

Calved: 10/31/2007 • Cow: +15969018 • Tattoo: 797

BW EPD	WW EPD	YW EPD	SC EPD	MILK EPD	%IMF EPD	UREA EPD
I +2.8	I +45	I +88	I -.05	I +19	I +.33	I +.25

• Sells open.

SWEAN	SPEEDLOT	\$GRID	\$BEEF
+22.44	+29.80	+26.02	+50.94

7 HEIFER CALF PREGNANCY

Due: 1/18/2009 • Progeny Pedigree

EXAR Titlelist T011
15714917
EXG Blackcap R054 R3

J&J Queenie 9206
+13412890
C&C Queen 418

#Twin Valley Precision E161
BR Royal Lass 7036-19
EXAR Sudden Impact 1537
EXG Blackcap N145 R3
#Kruggerand of Donamere 490
+A&B Queen 4173
Bando of Conanga 573
WK Queen 2147

BW EPD	WW EPD	YW EPD	SC EPD	MILK EPD	%IMF EPD	UREA EPD
S: +3.0	+57	I +102	I +.28	+21	S: I +.48	I +.69
D: +4.9	+52	+104	+24	+ 7	D: -.08	-.38

We at J&J are very excited about our recent purchase of a share of Titlelist, the popular lead bull of EXAR's 2008 Denver Champion Pen of Three. He is super correct, stylish, stout and, frankly, one of the more unique Angus bulls to come along in awhile. Titlelist complements 9206 nicely. Tremendous potential in this mating for those looking to make show cattle and powerful brood cows

• Selling a sexed heifer calf pregnancy due 1/18/2009.

SWEAN	SPEEDLOT	\$GRID	\$BEEF
S: +27.20	+39.51	+21.54	+51.17
D: +12.70	+43.70	+ 0.74	+30.34



EXAR Titlelist T011 — Sire of Lot 7



J&J Queen 6119 — Maternal sister to lots 6-10 and to the dam of the lots featured as 11-13. 6119 sold in our 2007 sale for \$10,500 to Macy Griswold and went on to be named Grand Champion Angus heifer at the 2007 Tulsa State Fair Junior Heifer Show. Congratulations, Macy!

J&J Queenie 9206 — The dam of 6119 and Lots 6-10 and the maternal grandam of Lots 11-13 is the cow that inspired the "cattle for people who enjoy looking at cows" line. 9206 has been mated to a variety of sires ... Northern Improvement, Midland, Marathon, Lutton, Future Direction and EXT, and she simply doesn't miss. She adds bone, pattern, body and beautiful front ends. 9206 is the best cow for making phenotype that I have ever had the opportunity to work with.

Lots 6A & 6B:

#GAR Precision 1680
CA Future Direction 5321
#12493607 CA Miss Power Fix 308

#+A&B Yukon 7150
J&J Queenie 9206
+13412890 C&C Queen 418

#Tehama Bando 155
9J9 GAR 856
#+SAF Power Fix
CA Lady Eight 1015
#Kruggerand of Donamere 490
+A&B Queen 4173
Bando of Conanga 573
WK Queen 2147

Two outstanding prospects produced by 9206 and sired by breed icon Future Direction. With Future Direction semen in short supply, these heifers are unique in pedigree and have a great deal of potential.

8 HEIFER CALF PREGNANCY

Due: 9/06/2008 • Progeny Pedigree

SS Objective T510 0T26
13776378
SS Miss Rita R011 7R8

J&J Queenie 9206
+13412890
C&C Queen 418

#DHD Traveler 6807
#SS Miss Hi Spade A114
SS Rito Rito R76 R011
SS Miss Ultress U56
#Kruggerand of Donamere 490
+A&B Queen 4173
Bando of Conanga 573
WK Queen 2147

BW EPD	WW EPD	YW EPD	SC EPD	MILK EPD	%IMF EPD	UREA EPD
S: +1.0	+71	+126	-.09	+24	S: +.56	+51
D: +4.9	+52	+104	+24	+ 7	D: -.08	-.38

This is an intriguing mating. The big spread, low birth, high growth, high carcass, high dollar beef sire mated up to the power cow who has gotten there on her offspring's good looks. I'm looking forward to seeing the calves from this mating, as our Objective calves have been impressive.

• Selling a sexed heifer calf pregnancy due 9/06/2008.

SWEAN	SPEEDLOT	\$GRID	\$BEEF
S: +38.28	+59.77	+29.04	+62.06
D: +12.70	+43.70	+ 0.74	+30.34



SS Objective T510 0T26 — Sire of Lot 8

QUEENIE 9206 PROGENY



the "Queenie" family

Lots 9, 10A & 10B:

N Bar Emulation EXT #10776479	#Emulation N Bar 5522 N Bar Primrose 2424	#Emulation 31 Ankony 8F78 Lass 8F275 #Emulation 31 Primrose N Bar 9962
J&J Queenie 9206 +13412890	#+A&B Yukon 7150 C&C Queen 418	#Krugerrand of Donamere 490 +A&B Queen 4173 Bando of Conanga 573 WK Queen 2147

These females rank among the best 15% of non-parent females for YW EPD.



N Bar Emulation EXT
— Sire of Lots 1B, 9, 10A-B & 50

9 J&J QUEEN 754

Calved: 3/03/2007 • Cow: +15854027 • Tattoo: 754

BW EPD	WW EPD	YW EPD	SC EPD	MILK EPD	%IMF EPD	UREA EPD
+3.4	+48	+92	-.06	+13	+1.11	+1.19

A favorite of many ranch visitors over the past year, 754 combines an attractive front end and a wide pin setting with a great hip and hind leg structure. This daughter of the popular EXT scanned with ratios of 109 for IMF and 115 for REA. Junior exhibitors will appreciate the quiet disposition of 754 and her flush sisters selling as buyer's choice Lots 10A-10B.

- Sells open.

SWEAN	SPEEDLOT	SGRID	SBEEF
+19.86	+32.71	+10.90	+36.55



9

Selling choice



10A



10B

10A J&J QUEEN 7001

Calved: 11/05/2007 • Cow: +15969021 • Tattoo: 7001

BW EPD	WW EPD	YW EPD	SC EPD	MILK EPD	%IMF EPD	UREA EPD
+3.4	+48	+92	-.06	+13	+1.08	-.05

- Sells open.

SWEAN	SPEEDLOT	SGRID	SBEEF
+19.86	+32.71	+10.69	+36.38

10B J&J QUEEN 798

Calved: 11/04/2007 • Cow: +15969019 • Tattoo: 798

BW EPD	WW EPD	YW EPD	SC EPD	MILK EPD	%IMF EPD	UREA EPD
+3.4	+48	+92	-.06	+13	+1.08	-.05

- Sells open.

SWEAN	SPEEDLOT	SGRID	SBEEF
+19.86	+32.71	+10.69	+36.38

Selling choice of two outstanding November born J&J Queenie 9206 daughters sired by breed legend EXT. These heifers are correct, calm and stylish and have tremendous potential as show heifers and brood cows.

- Selling choice between 7001 and 798.



11 J&J QUEEN 762

Calved: 3/08/2007 • Cow: +15858562 • Tattoo: 762

Papa Equator 2928
#11788302

J&J Queen 414
+14694435

#Papa Power 096
#Papa Envious Blackbird 8849
#+Northern Improvement 4480 GF
+J&J Queenie 9206

#Cottontail Maternal Power464
Blackbird DHD 2816
Papa Rito Traveler 4807
Envious Blackbird DHD 5848
#TC Stockman 365
Blackcap of RR 5367
#+A&B Yukon 7150
C&C Queen 418

BW EPD	WW EPD	YW EPD	SC EPD	MILK EPD	%IMF EPD	UREA EPD
I +4.7	I +50	I +98		I +16	I +.01	I +.12

A superb brood cow prospect! Huge rib cage, tremendous depth of flank, attractive and broody on the profile. 762 ranks in the best 4% of non-parent females for YW EPD and ratioed 105 for ultrasound REA. Flush brother sells as Lot 13. Co-owned with Carl Johnson and Chuck Meadows.

SWEAN	SPEEDLOT	\$GRID	\$BEEF
+17.92	+38.15	+9.96	+38.62

• Breeding information available sale day.

13 J&J EQUATOR 763

Calved: 3/09/2007 • Bull: +15858561 • Tattoo: 763

Papa Equator 2928
#11788302

J&J Queen 414
+14694435

#+Papa Power 096
#Papa Envious Blackbird 8849
#+Northern Improvement 4480 GF
+J&J Queenie 9206

#Cottontail Maternal Power464
Blackbird DHD 2816
Papa Rito Traveler 4807
Envious Blackbird DHD 5848
#TC Stockman 365
Blackcap of RR 5367
#+A&B Yukon 7150
C&C Queen 418

BW EPD	WW EPD	YW EPD	SC EPD	MILK EPD	%IMF EPD	UREA EPD
I +4.7	I +50	I +98		I +16	I +.06	I +.04

A powerful, moderate framed herd sire prospect combining tremendous stoutness of hip, base width and an extremely correct structural base. Clean sheathed, big testicled and sound footed, this high growth March bull posted an IMF ratio of 105. 763 will add growth, muscle and "look" to your next calf crop. Flush sister sells as Lot 11. Co-owned with Carl Johnson and Chuck Meadows.

SWEAN	SPEEDLOT	\$GRID	\$BEEF
+17.92	+38.15	+12.14	+40.80

12 J&J QUEEN 741

Calved: 2/07/2007 • Cow: +15854030 • Tattoo: 741

Schurrtop MC 2500
14840227

J&J Queen 414
+14694435

Schurrtop MC
Schurrtop RS 1413 2153
#+Northern Improvement 4480 GF
+J&J Queenie 9206

#Papa Equator 2928
Schurrtop 1483 9024
Brooks Schurr Trend
Ryans Schurrtop 2125
#TC Stockman 365
Blackcap of RR 5367
#+A&B Yukon 7150
C&C Queen 418

BW EPD	WW EPD	YW EPD	SC EPD	MILK EPD	%IMF EPD	UREA EPD
I +3.8	I +46	I +87		I +18	I -.10	I -.11

A very fancy MC 2500 daughter with high growth genetics and extra structural correctness. Co-owned with Carl Johnson and Chuck Meadows.

SWEAN	SPEEDLOT	\$GRID	\$BEEF
+20.94	+28.38	+6.10	+29.61

• Breeding information available sale day.



J&J Queen 414 — daughter of Queenie 9206 and donor dam of Lots 11–13. A cow that offers flawless phenotype and evaluated by many visitors as the most visually impressive cow at J&J.



14

J&J EMPRESS 768

Calved: 3/13/2007 • Cow: +15856851 • Tattoo: 768

Schurrtop MC 2500
14840227

Schurrtop RS 1413 2153

#Papa Equator 2928
Schurrtop 1483 9024
Brooks Schurr Trend
Ryans Schurrtop 2125

OSU Empress 4172
+14736974

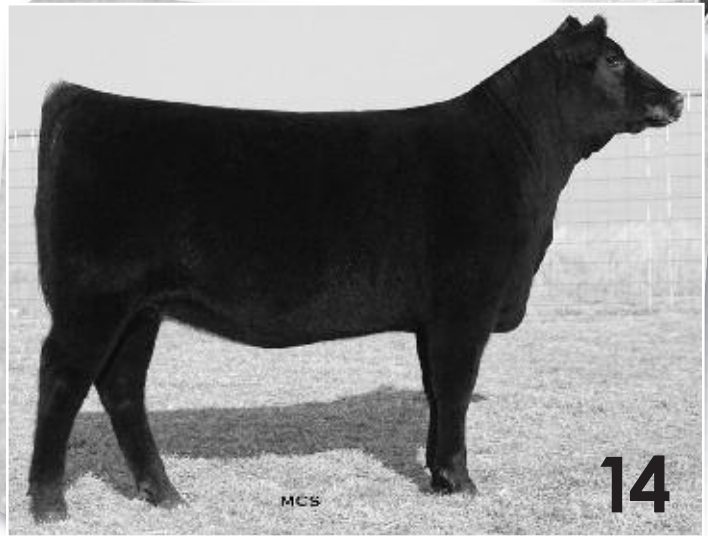
#BR Midland
+OSU Empress 6188

#Twin Valley Precision E161
BR Royal Lass 7036-19
#+Krugerrands Moneyline
+DF Empress 6079

BW EPD	WW EPD	YW EPD	SC EPD	MILK EPD	%IMF EPD	UREA EPD
I +3.3	I +44	I +82		I +18	I +.12	I +.54

This March heifer descends from the famous Empress 6079. Her dam, OSU Empress 4172, is a donor in the J&J and A-Cross ET program and was the high seller of the 2005 Cowboy Classic at OSU. 768 is extra stylish and has the potential to be very competitive in the show ring. This heifer ratioed 105 for REA and ranks in the best 15% of non-parent females in her EPD for this trait. A flush sister sells as Lot 41, and flush brothers sell as Lots 69-71. Co-owned with A-Cross.

- Breeding information available sale day.



14

15

J&J DIXIE ERICA 767

Calved: 3/12/2007 • Cow: 15854019 • Tattoo: 767

Schurrtop MC 2500
14840227

Schurrtop RS 1413 2153

#Papa Equator 2928
Schurrtop 1483 9024
Brooks Schurr Trend
Ryans Schurrtop 2125

J&J 6807 Dixie 012
+13730176

#DHD Traveler 6807
Dixie Erica of RR 7530

#QAS Traveler 23-4
#Bemindful Maid DHD 0807
#E&B 1483 Scotchman 5041
#Dixie Erica of RR 3506

BW EPD	WW EPD	YW EPD	SC EPD	MILK EPD	%IMF EPD	UREA EPD
+3.0	+40	I +79	I +.36	+20	I -.10	I +.32

This powerful, long necked heifer descends from Dixie Erica 7530, one of the foundation donors at J&J. 767 has tremendous muscle shape. Her dam, the 012 cow, is a joint donor for J&J and A-Cross and is the mother of several past features and high selling lots in the first two J&J sales. Co-owned with A-Cross. Maternal sister sells as Lot 61.

- Breeding information available sale day.



15

16

J&J BLANCHE 722

Calved: 2/02/2007 • Cow: 15854013 • Tattoo: 722

Schurrtop MC 2500
14840227

Schurrtop RS 1413 2153

#Papa Equator 2928
Schurrtop 1483 9024
Brooks Schurr Trend
Ryans Schurrtop 2125

J&J Blanche 553
15132183

+EXAR New Look 2971
+Leachman Blanche 1218

#Bon View New Design 1407
N Bar Primrose 2424
#Connealy Frontline
Leachman Blanche 5001

BW EPD	WW EPD	YW EPD	SC EPD	MILK EPD	%IMF EPD	UREA EPD
+2.7	+41	I +82		+21	I +.20	I +.57

This February heifer is the first natural calf of a productive New Look daughter produced by another of our foundation donors, Leachman Blanche 1218. 722 has the look to show and the pedigree to make an excellent cow. This big ribbed heifer scanned with ratios of 123 for IMF and 109 for REA. Her REA EPD is in the best 15% of non-parent females.

- Breeding information available sale day.



16



"A genuine bull stud prospect..."



BC 7022 Raven 7965 —
Sire of Lots 17, 18A & 18B

17

MCS

Lots 17, 18A & 18B:

BC 7022 Raven 7965
15034593

BC Marathon 7022
OCC Blackbird 796F

OCC Kirby 633K
Gibbet Hill Mignonne E37
#OCC Bonanza 880B
OCC Blackbird 779A

EXAR Empress 7630
+12796814

#+Krugerrands Moneyline
+DF Empress 6079

#Krugerrand of Donamere 490
Ankony 5G00 Blackbird GC017
#Pine Drive Big Sky
KAF Miss Jetliner 641 1B4

BW EPD	WW EPD	YW EPD	SC EPD	MILK EPD	%IMF EPD	UREA EPD
+2.5	+41	+77	-12	+15	-.03	+98

At +.98, these calves rank among the best 1% of the Angus breed for UREA EPD.

SWEAN	SFEEDLOT	SGRID	SBEEF
+21.75	+20.31	+14.23	+32.60



18A

MCS

17 J&J REALITY 791
Calved: 10/03/2007 • Bull: +15969013 • Tattoo: 791

A genuine bull stud prospect sired by the popular Limestone, Conley and Express herd sire BC 7022 Raven 7965, a trait leader for UREA EPD and sire of several of the highest selling lots in the 2008 record-setting EXAR "Honor Roll" Sale. Reality is a thick topped, neat patterned, clean sheathed "power" bull with a big, square hip and strong hind leg structure. The bottom side of Reality's pedigree, the famous Empress 6079 line, has produced more show ring and pen of three champion bulls than any other maternal line in breed history. EXAR Empress 7630, the dam of Reality and several past high selling features at EXAR and J&J, ranks in the best 2% of active dams for UREA EPD and has had 17 head evaluated for ultrasound REA with an average ratio of 105. This calf offers an outcross pedigree to many of today's popular bloodlines with breed-leading genetics for muscle, ranking well into the best 1% of non-parent bulls for ultrasound REA. This bull will be used to sire halter prospects at J&J, and we will retain possession for the fall breeding season.

- Selling 50% semen interest plus spring/summer possession.

18A J&J EMPRESS 784
Calved: 9/16/2007 • Cow: +15969011 • Tattoo: 784

- Sells open.

18B J&J EMPRESS 792
Calved: 10/04/2007 • Cow: +15969012 • Tattoo: 792

- Sells open.

The sire of the heifers selling as Lots 18A and 18B, BC Raven, is rapidly becoming renowned for siring neat fronted, deep flanked females with the style and look to win in the show ring. Paternal sisters to these two females have recently topped sales at both the OSU Cowboy Classic and the EXAR Honor Roll. Backed by a great line of females, these heifers have tremendous potential as show and donor prospects.

EMPRESS 7630 SALE FEATURES



Lots 19 & 20:

EXAR Pit Boss 409
+14682821

EXAR Empress 7630
+12796814

EXAR Sudden Impact 1537
WK Winnie 7305

#+Krugerrands Moneyline
+DF Empress 6079

#+Northern Improvement 4480 GF
+BLR Blushing Pride 9097
#+Krugerrands Moneyline
WK Winnie 5460

#Krugerrand of Donamere 490
Ankony 5G00 Blackbird GC017
#Pine Drive Big Sky
KAF Miss Jetliner 641 1B4

BW EPD	WW EPD	YW EPD	SC EPD	MILK EPD	%IMF EPD	UREA EPD
I +1.6	I +38	I +70	I -.10	I +16	I -.07	I +.40

SWEAN	SFEEDLOT	SGRID	SBEFF
+23.71	+14.62	+12.43	+26.57



EXAR Pit Boss 409 —
Sire of Lots 19 & 20



19 J&J EMPRESS 7007

Calved: 9/30/2007 • Cow: +15969025 • Tattoo: 7007

A powerful, fancy show heifer prospect sired by Pit Boss. This heifer has been a favorite of the J&J crew and ties together two great lines of females for making great looking cattle—the WK Winnie and DF Empress cow families. This heifer's calm temperament complements her strong phenotype to make her an excellent choice for a young exhibitor.

- Sells open.



20 J&J EMPRESS 7006

Calved: 9/30/2007 • Cow: +15969024 • Tattoo: 7006

Don't overlook this flushmate to the Lot 19 heifer. 7006's recip mother provided her with little more than companionship and she is still a little green; nevertheless, she has the goods to develop into a very competitive show heifer.

- Sells open.

21 J&J EMPRESS 7005

Calved: 9/30/2007 • Cow: +15969023 • Tattoo: 7005

EXAR Lutton 1831
14035047

EXAR Empress 7630
+12796814

EXAR Saras Dream 9809

#+Krugerrands Moneyline
+DF Empress 6079

#TC Stockman 365
Blackcap of RR 5367
#+A&B Yukon 7150
+Saras Dream

#Krugerrand of Donamere 490
Ankony 5G00 Blackbird GC017
#Pine Drive Big Sky
KAF Miss Jetliner 641 1B4

BW EPD	WW EPD	YW EPD	SC EPD	MILK EPD	%IMF EPD	UREA EPD
I +1.8	I +47	I +84	I -.35	I +18	I +.05	I +.27

SWEAN	SFEEDLOT	SGRID	SBEFF
+26.74	+24.96	+13.20	+35.17

This Lutton daughter is long and correct and is just now starting to bloom. Her pattern and correctness indicate a lot of show potential. Her Birth-to-Yearling EPD spread and strong body composition genetics indicate long-term earning potential as a cow.

- Sells open.





Tehama Entella G676
— Dam of Lot 22

22

22

RR ENTELLA 3677

Calved: 10/10/2003 • Cow: +14727464 • Tattoo: 3677

BR Midland
#13898124

#Twin Valley Precision E161
BR Royal Lass 7036-19

#GAR Precision 1680
+WCC Blackcap C9
#+SAF Neutron
#SAF Royal Lass 7036

#Finks 5522-6148

#Emulation N Bar 5522
Finks Proud Formera 614
#QAS Traveler 23-4
Tehama Entella Y463

Tehama Entella G676
13040398

Tehama Entella A367

BW EPD	WW EPD	YW EPD	SC EPD	MILK EPD	%IMF EPD	UREA EPD
+2.4	+46	+81		+18	+43	+56

A highly productive female that is just reaching her prime. 3677 is a very wet Midland daughter that descends from the Tehama Entella cow family. As an individual, 3677 earned ratios of 124 for IMF and 108 for REA, and in production she has raised two natural calves averaging a birth ratio of 97 and a nursing ratio of 105. We have ET calves sired by 1407 coming this spring. 3677 ranks in the best 3% of the breed's current dams for Ultrasound IMF and REA and sells with an excellent heifer calf at side by TC Total.

SWEAN	\$FEEDLOT	\$GRID	\$BEEF
+26.39	+22.35	+26.85	+45.62

22A Heifer calf born 1/30/2008, tattoo 805, by TC TOTAL 410. BW 78 lbs.

23

ROLLIN ROCK EMMA 4007

Calved: 2/03/2004 • Cow: 14774773 • Tattoo: 4007

Hero 6267 of RR 2418
#11808572

#RR Hero 6267
RR Everelda Entense 0413

#Highwood Hero LCH
#Blackbird of RR 1204
#QAS Traveler 23-4
RR Everelda Entense 8320 TPB

E&B 4137 Dominett 855

#Gardens EXT 4137 S2
#Lady 228 High Rise 474
Corral Creek Strath C061
RR Emma 0505

Rollin Rock Emma 2791
14356073

#RR Emma 3517

BW EPD	WW EPD	YW EPD	SC EPD	MILK EPD	%IMF EPD	UREA EPD
+0.6	+40	+61	+1.60	+30	-1.17	+0.6

4007 is an excellent example of why we have been so fond of cows from the Rollin Rock program in Montana. She is fertile, sound, low maintenance and productive. This is documented by her first two calves ratioing 92 at birth, 108 at weaning and 102 as yearlings. She sells with a really nice heifer calf at side by Gardens Prime Star.

SWEAN	\$FEEDLOT	\$GRID	\$BEEF
+32.90	+5.37	+3.81	+11.87

23A Heifer calf born 3/08/2008, tattoo 856, by GARDENS PRIME STAR. BW 75 lbs.

24

HCC FB BLKBIRD 3045

Calved: 1/27/2003 • Cow: 14549072 • Tattoo: 3045

CA Future Direction 5321
#12493607

#GAR Precision 1680
CA Miss Power Fix 308

#Tehama Bando 155
9J9 GAR 856
#+SAF Power Fix
CA Lady Eight 1015

#Emulation N Bar 5522

Thomas Blackbird 5121
12365812

Thomas Blackbird 3537

#Emulation 31
Ankony 8F78 Lass 8F275
#Rito 8E8 of 5H11 Traveler
Thomas Blackbird 6017

BW EPD	WW EPD	YW EPD	SC EPD	MILK EPD	%IMF EPD	UREA EPD
-0.1	+35	+63	-0.35	+20	+46	+19

A long, deep ribbed, sound structured cow with tremendous udder quality. This daughter of Pathfinder Sire Future Direction sells with an outstanding heifer calf at side by Bando 1961. 3045 would have been pictured in the catalogue if not for calving on photo day.

SWEAN	\$FEEDLOT	\$GRID	\$BEEF
+26.60	+9.06	+25.73	+36.04

24A Heifer calf born 2/10/2008, tattoo 837, by HSAF BANDO 1961. BW 67 lbs.

SPRING COW/CALE PAIRS



25

BLACKBIRD OF RR 4132

Calved: 2/15/2004 • Cow: 14774817 • Tattoo: 4132

EXAR Merit 216
+14136787

#Bon View New Design 1407
Dixie Erica of RR 7530

#B/R New Design 036
Bon View Pride 664
#E&B 1483 Scotchman 5041
#Dixie Erica of RR 3506

#GDAR Quantum 1245

#GDAR Centennial 911
#GDAR Miss Blackbird 510
#QAS Traveler 23-4
Blackbird of RR 3271

Blackbird of RR 5611
12462902

Blackbird of RR 5217

BW EPD	WW EPD	YW EPD	SC EPD	MILK EPD	%IMF EPD	UREA EPD
+0.5	+35	+67	-0.02	+19	+41	+17

This is a powerful female that sells with a herd bull prospect at side by Basin Franchise. 4132 earned ratios of 150 for IMF and 104 for REA as a yearling. Her first natural calf, now a two year old that sells as Lot 46, ratioed 122 for IMF. Sired by a 1407 son that was produced by the J&J foundation donor 7530, 4132 ranks in the breed's best 3% of active dams for Ultrasound IMF.

25A Bull calf born 2/03/2008, tattoo 825, by BASIN FRANCHISE P142. BW 84 lbs.



25

26

ROLLIN ROCK BLACKBIRD 4191

Calved: 2/20/2004 • Cow: 14774832 • Tattoo: 4191

RR Gold Buckle 2225
+14320984

#SAF Focus of ER
RR Everelda Entense 0413

#SAF Fame
GDAR Forever Lady 246
#QAS Traveler 23-4
RR Everelda Entense 8320 TPB

#Lukens 711 Buster 3163

#+GDAR Oscar 711
GDAR Forever Lady 9163
Vermilion Traveler 1007
Rollin Rock Blackbird 1504

Rollin Rock Blackbird 9964
13458720

Rollin Rock Blackbird 3514

BW EPD	WW EPD	YW EPD	SC EPD	MILK EPD	%IMF EPD	UREA EPD
+4.5	+42	+75	+62	+22	+54	-.06

4191 is a long, deep, sound, feminine fronted cow that ranks in the best 1% of active dams for Ultrasound IMF EPD. As a yearling, she scanned with 7.75% IMF to ratio 184 and balanced this with a REA ratio of 103. Daughters sell as Lots 48 and 62.

• Will calve before sale day to BC 7022 RAVEN 7965.



26

27

ERISKAY OF ROLLIN ROCK 4818

Calved: 3/13/2004 • Cow: +14808961 • Tattoo: 4818

ORR Millennium 7000
+12868294

#+GDAR Royce 131
+SVF Forever Lady 185

#Traveler 124 GDAR
GDAR Rachel 5115
#+Skarship Saratoga
#Forever Lady 163 GDAR

#QAS Traveler 23-4

#Band 234 of Ideal 3163
QAS Blackbird Eve 601 1
Cedar Hills Intent 3025
#Eriskay of Rollin Rock 0329

Eriskay of Rollin Rock 8211
11160177

Eriskay of Rollin Rock 6365

BW EPD	WW EPD	YW EPD	SC EPD	MILK EPD	%IMF EPD	UREA EPD
+3.1	+32	+55	-57	+7	-.12	-.03

A powerful cow from the famed Eriskay family of Rollin Rock. This cow is heavy boned and has a long, level hip and a big rib cage. She sells with a nice heifer calf at side sired by the high \$Beef sire TC Total.

27A Heifer calf born 3/22/2008, tattoo 869, by TC TOTAL 410. BW 83 lbs.



27



28 A-CROSS ERICA A605

Calved: 2/10/2006 • Cow: 15461796 • Tattoo: A605

EXAR Lutton 1831
14035047
EXAR Saras Dream 9809
#Northern Improvement 4480 GF
#TC Stockman 365
Blackcap of RR 5367
#+A&B Yukon 7150
+Saras Dream

OSU Erica 2126
14127532
OSU 490 Erica 9135
#E&B 1483 Scotchman 5041
#RR 9440 Scotch Cap 1483
Lady 183 Traveler 334
#Krugerrand of Donamere 490
#OSU 869A Erica 4147

BW EPD	WW EPD	YW EPD	SC EPD	MILK EPD	%IMF EPD	UREA EPD
+1.6	+50	+93		+20	+1.0	+25

This Lutton female stems from one of the very best foundation cows at A-Cross. A605 herself had ratios of 105, 107 and 114 for WW, YW and ribeye. She has a great EPD spread and is one we hate to part with. Owned by A-Cross.

SWEAN	\$FEEDLOT	SGRID	SBEEF
+27.43	+32.94	+12.62	+38.55

28A Heifer calf born 3/08/2008, tattoo 855, by J&J FUTURE DIRECTION 555. BW 77 lbs.



29 HVH MISS BANDO N9 26S

Calved: 2/09/2006 • Cow: 15443702 • Tattoo: 26S

HVH New Design 1407 85M
+14655485
GK Betsy Bardolena 323A
#Bon View New Design 1407
#B/R New Design 036
Bon View Pride 664
Bardolene of Peak Dot 204R
SPA Primeline Princess C401

HVH 291F Miss Bando N9
14398480
PF Miss Bando 291F
#+GAR Grid Maker
#GDAR Traveler 044
GAR Precision 2536
EXAR Bando 4065
+PF Miss Right Time

BW EPD	WW EPD	YW EPD	SC EPD	MILK EPD	%IMF EPD	UREA EPD
+2.7	+45	+83		+15	+1.6	+33

26S is a nice 1407 granddaughter with a terrific pedigree. The 85M daughters are easy doing, productive young cows. Owned by A-Cross.

SWEAN	\$FEEDLOT	SGRID	SBEEF
+22.58	+24.74	+13.92	+35.46

29A Heifer calf born 3/02/2008, tattoo 851, by J&J FUTURE DIRECTION 555. BW 69 lbs.



30 A-CROSS EQUAL QUEEN A635

Calved: 3/12/2006 • Cow: 15461792 • Tattoo: A635

KWF Equator C17L
13846860
+Leachman Lass 1125
#Papa Equator 2928
#+Papa Power 096
#Papa Envious Blackbird 8849
#AAR New Trend
+Leachman Lass 402L

KW Eagle Queen 31M
14982020
KW Emulation Queen 26K
KW 9440 Eagle 8J
#RR Scotchcap 9440
#AAA New Premier 004
PAF Emulation 8680
Quail Meadow Queen C14G

BW EPD	WW EPD	YW EPD	SC EPD	MILK EPD	%IMF EPD	UREA EPD
+5.2	+32	+68		+24	-0.1	+50

A635 is stout and pleasing to the eye. She ranks in the best 5% of Angus dams for UREA EPD. All three females on her dam's side reside in the A-Cross herd—talk about a productive family! Her heifer calf at side should make an excellent halter prospect. Owned by A-Cross.

SWEAN	\$FEEDLOT	SGRID	SBEEF
+14.55	+14.93	+13.33	+26.13

30A Heifer calf born 4/12/2008, tattoo 880, by J&J FUTURE DIRECTION 555. BW 85 lbs.

A-CROSS SPRING COW/CALE PAIRS



31 A CROSS EQUAL LASS A610

Calved: 2/17/2006 • Cow: 15461779 • Tattoo: A610

BR Midland
#13898124

#Twin Valley Precision E161
BR Royal Lass 7036-19

#GAR Precision 1680
+WCC Blackcap C9
#+SAF Neutron
#SAF Royal Lass 7036

KWF Equator C17L

#Papa Equator 2928
+Leachman Lass 1125
KW 9440 Eagle 8J
+Quail Meadow Lass C92J

KW Equal Lass 7P
14982035

KW Eagle Lass 3M

BW EPD	WW EPD	YW EPD	SC EPD	MILK EPD	%IMF EPD	UREA EPD
+5.3	+41	+81			+47	+20

A nice Midland daughter whose dam is still working in the herd and is a calf raiser! A610's %IMF EPD and \$B Value rank her in the top 2% and 3% of Angus dams, respectively. Owned by A-Cross.

31A Bull calf born 1/18/2008, tattoo A806, by EXAR NEW LOOK 2971. BW 65 lbs.

SWEAN	SFEEDLOT	\$GRID	\$BEEF
+15.93	+24.29	+24.95	+45.33

34 A CROSS ERICA A603

Calved: 2/06/2006 • Cow: 15461784 • Tattoo: A603

SAV 8180 Traveler 004
13512009

#Sitz Traveler 8180
+Boyd Forever Lady 8003

#GDAR Traveler 71
Sitz Everelda Entense 1137
#AAR New Trend
SVF Forever Lady 57D

#+A&B Yukon 7150

#Krugerrand of Donamere 490
+A&B Queen 4173
#Tehama Bando 155
Lyons Erica 2038

J&J Erica 132
+13844885

Lyons Erica 4001

BW EPD	WW EPD	YW EPD	SC EPD	MILK EPD	%IMF EPD	UREA EPD
+0.3	+51	+88		+20	-.08	-.05

A nice Traveler 004 female whose dam is still working in our herd. We are retaining a great maternal brother to A603 sired by EXT. A603 stems from one of our best cow families. Her birth and growth EPDs rank in the top 10% of Angus dams. Owned by A-Cross.

• Will calve by end of May to J&J FUTURE DIRECTION 555.

SWEAN	SFEEDLOT	\$GRID	\$BEEF
+30.99	+27.43	+7.39	+31.02

32 A CROSS EMULATION QUEEN A622

Calved: 2/28/2006 • Cow: 15461791 • Tattoo: A622

KWF Equator C17L
13846860

#Papa Equator 2928
+Leachman Lass 1125

#+Papa Power 096
#Papa Envious Blackbird 8849
#AAR New Trend
+Leachman Lass 402L

PAF Emulation 8680

#N Bar Emulation EXT
KAR Miss Trendsetter 452
#DHD Traveler 6807
+Quail Meadow Queen C51E

KW Emulation Queen 26K
13647792

Quail Meadow Queen C14G

BW EPD	WW EPD	YW EPD	SC EPD	MILK EPD	%IMF EPD	UREA EPD
+5.1	+46	+72		+24	+02	+43

The dam of this two year old has a beautiful udder and is easy fleshing and keeping. A622's UREA EPD ranks in the top 10% of Angus dams. Owned by A-Cross.

32A Heifer calf born 1/15/2008, tattoo A803, by EXAR 263C. BW 78 lbs.

SWEAN	SFEEDLOT	\$GRID	\$BEEF
+24.05	+13.56	+13.37	+28.80

35 HVH MISS PINEY 274 505

Calved: 2/24/2006 • Cow: 15443707 • Tattoo: 505

HVH New Design 1407 85M
+14655485

#Bon View New Design 1407
GK Betsy Bardolena 323A

#B/R New Design 036
Bon View Pride 664
Bardolene of Peak Dot 204R
SPA Primeline Princess C401

#E&B 1483 Scotchman 543

#RR 9440 Scotch Cap 1483
Lady Skylar B121
#N Bar Emulation EXT
OSU 869A Miss Piney 4128

HVH Miss Piney 27K
13628083

OSU EXT Miss Piney 8104

BW EPD	WW EPD	YW EPD	SC EPD	MILK EPD	%IMF EPD	UREA EPD
+2.1	+37	+72		+20	+23	+17

Another solid EPD spread for this 1407 granddaughter. Every cow in her dam's pedigree had a beautiful, picture-perfect udder. Owned by A-Cross.

35A Bull calf born 3/01/2008, tattoo 850, by J&J FUTURE DIRECTION 555. BW 80 lbs.

SWEAN	SFEEDLOT	\$GRID	\$BEEF
+22.82	+16.93	+18.17	+33.52

33 A CROSS EMULATION LASS A626

Calved: 3/05/2006 • Cow: 15461780 • Tattoo: A626

KWF Equator C17L
13846860

#Papa Equator 2928
+Leachman Lass 1125

#+Papa Power 096
#Papa Envious Blackbird 8849
#AAR New Trend
+Leachman Lass 402L

PAF Emulation 8680

#N Bar Emulation EXT
KAR Miss Trendsetter 452
DBCS Stacker A729
+Quail Meadow Lass C511E

KW Emulation Lass 8K
13647790

Quail Meadow Lass C36H

BW EPD	WW EPD	YW EPD	SC EPD	MILK EPD	%IMF EPD	UREA EPD
+3.3	+42	+73		+21	+01	+22

This C17L daughter stems from a solid cow family. Owned by A-Cross.

33A Bull calf born 3/03/2008, tattoo 852, by J&J FUTURE DIRECTION 555. BW 95 lbs.

SWEAN	SFEEDLOT	\$GRID	\$BEEF
+24.03	+16.02	+13.66	+29.63

36 HVH LASSIE 64L 15

Calved: 1/18/2006 • Cow: 15457440 • Tattoo: 15

Dalebanks Centennial 2526
14251270

#Bon View New Design 878
#Witch of Dalebanks 9067

#B/R New Design 036
Bon View Gammer 85
#N Bar Emulation EXT
#Witch of Dalebanks 6011

#+GAR Grid Maker

#GDAR Traveler 044
GAR Precision 2536
#Westwind Rito 8503 DJH 019
GK Lena Lassie 358C

HVH F503 Lassie 64L
13834616

+KFF Lassie Rito F503

BW EPD	WW EPD	YW EPD	SC EPD	MILK EPD	%IMF EPD	UREA EPD
+2.5	+55	+98		+24	+08	+58

Check out the EPD spread for this two year old, who ranks in the best 1% of Angus dams for WW, best 2% for YW and \$F, best 3% for UREA and best 10% for \$W and \$B. Her stylish heifer calf at side is an excellent halter prospect. Owned by A-Cross.

36A Heifer calf born 2/24/2008, tattoo 844, by J&J FUTURE DIRECTION 555. BW 77 lbs.

SWEAN	SFEEDLOT	\$GRID	\$BEEF
+28.87	+36.12	+12.98	+40.19



37 A CROSS EMPRESS A701

Calved: 1/18/2007 • Cow: 15716136 • Tattoo: A701

EXAR New Look 2971
#14230122
#Bon View New Design 1407
N Bar Primrose 2424
#BR Midland

OSU AR Empress 5128
15067309
+OSU Empress 3116

#B/R New Design 036
Bon View Pride 664
#Emulation 31
Primrose N Bar 9962
#Twin Valley Precision E161
BR Royal Lass 7036-19
EXAR Sudden Impact 1537
+OSU Empress 1111

BW EPD	WW EPD	YW EPD	SC EPD	MILK EPD	%IMF EPD	UREA EPD
+1.3	+48	I +93		+20	I +.23	I +.55

A701 was the popular calf at side of the high selling A-Cross pair in the 2007 J&J Sale. This heifer is stout, structurally sound and big volumed. She ranks in the best 10% of non-parent females for YW EPD and the best 15% for both Ultrasound REA and \$Beef. An excellent brood cow prospect that is halter broke and has the potential to show.

• Breeding information available sale day.



38 J&J 410 LASS 710

Calved: 1/26/2007 • Cow: 15866434 • Tattoo: 710

TC Total 410
14844711
+TC Erica Eileen 2047
#N Bar Emulation EXT

Blackjacks Lass 270R
15216220
Summitcrest Lass 062E

#B/R New Design 036
#Bon View Erica 443
#Twin Valley Precision E161
#+TC Erica Eileen 5116
#Emulation N Bar 5522
N Bar Primrose 2424
Summitcrest Alloy Z087
#Summitcrest Lass 151Y

BW EPD	WW EPD	YW EPD	SC EPD	MILK EPD	%IMF EPD	UREA EPD
+4.7	+59	I +105		+26	I +.44	I +.60

710 is the highest \$Beef yearling heifer in the sale and ranks in the

SWEAN	\$FEEDLOT	\$GRID	\$BEEF
+25.32	+41.87	+23.76	+53.28

best 2% of non-parent females in the Angus breed for this trait. This powerful female was the first natural calf of a productive, pretty uddered EXT daughter. 710's strong phenotype is backed by ultrasound ratios of 119 for IMF and 109 for REA. A powerful brood cow in the making.

• Breeding information available sale day.

39 EXAR BLACKBIRD 7001

Calved: 1/20/2007 • Cow: 15993000 • Tattoo: 7001

Schurrtop MC 2500
14840227
Schurrtop MC
Schurrtop RS 1413 2153
+Rito 112 of 2536 Rito 616

EXAR Blackbird 5001
+14984114
+ACF Blackbird 0308

#Papa Equator 2928
Schurrtop 1483 9024
Brooks Schurr Trend
Ryans Schurrtop 2125
#Rito 616 of 4B20 6807
GAR Precision 2536
#B/R New Design 036
Davis YR Blackbird 558H

BW EPD	WW EPD	YW EPD	SC EPD	MILK EPD	%IMF EPD	UREA EPD
S: +5.3	+48	+89	+59	+22	I +.19	I +.49
D: +2.6	I +53	I +94	I -.12	I +28		

7001 is the first natural calf of a female that serves as a donor in the joint embryo programs of

SWEAN	\$FEEDLOT	\$GRID	\$BEEF
S: +19.30	+29.63	+10.91	+35.16
D: +30.01	+32.77	+29.74	+56.11

McLemore Farms and J&J. Produced by a stout 112 daughter, 7001 descends from the famous Davis Blackbird 558H. Her maternal grandam, ACF Blackbird 0308, is considered by many as the most powerful daughter of 558H. 7001 is a long hiped, bold sprung female with donor potential. Co-owned with Kent McLemore.

• Breeding information available sale day.

40 J&J BLACKBIRD 748

Calved: 2/21/2007 • Cow: 15854015 • Tattoo: 748

BR Midland
#13898124
BR Royal Lass 7036-19
#Hero 6267 of RR 2418

Rollin Rock Blackbird 4346
14774883
#CH Blackbird 9487

#Twin Valley Precision E161
#GAR Precision 1680
+WCC Blackcap C9
#+SAF Neutron
#SAF Royal Lass 7036
#RR Hero 6267
RR Everelda Entense 0413
N Bar Explosion V1495
#CH Blackbird 5756

BW EPD	WW EPD	YW EPD	SC EPD	MILK EPD	%IMF EPD	UREA EPD
+2.1	+53	I +86		+20	I +.29	I +.37

This big ribbed, easy keeping Midland daughter is one of my favorites. The bottom side of her three-generation pedigree is loaded with Pathfinder cows. Another halter broke heifer with a very calm demeanor that has the potential to be an outstanding cow.

• Breeding information available sale day.

YEARLING HEIFERS



41 J&J EMPRESS 758

Calved: 3/06/2007 • Cow: +15856852 • Tattoo: 758

Schurrtop MC 2500
14840227

Schurrtop RS 1413 2153

#Papa Equator 2928
Schurrtop 1483 9024
Brooks Schurr Trend
Ryans Schurrtop 2125

OSU Empress 4172
+14736974

#BR Midland
+OSU Empress 6188

#Twin Valley Precision E161
BR Royal Lass 7036-19
#+Krugerrands Moneyline
+DF Empress 6079

BW EPD	WW EPD	YW EPD	SC EPD	MILK EPD	%IMF EPD	UREA EPD
I +3.3	I +44	I +82		I +18	I +.11	I +.39

This flushmate to Lot 14 is a long, attractive fronted heifer produced by the J&J and A-Cross joint donor OSU Empress 4172. Halter broke. Co-owned with A-Cross. Maternal sister sells as Lot 23.

- Breeding information available sale day.

SWEAN	SPEEDLOT	\$GRID	\$BEEF
+21.99	+24.12	+17.43	+38.52



41

42 J&J EMPRESS 779

Calved: 4/16/2007 • Cow: 15854020 • Tattoo: 779

J&J Double Take 550
+15132206

+PF E161 Bardolena 3153

#Bon View New Design 1407
N Bar Primrose 2424
#Twin Valley Precision E161
GK Betsy Bardolena 323A

WK Empress 4566
14835545

#BR Midland
WK Empress 1182

#Twin Valley Precision E161
BR Royal Lass 7036-19
#Bon View New Design 1407
+WK Empress 8170

BW EPD	WW EPD	YW EPD	SC EPD	MILK EPD	%IMF EPD	UREA EPD
+1.8	+45	I +87		+18	I +.23	I +.36

An April show and brood cow prospect that is sired by the high selling lot of the first J&J sale, Double Take, and descending from the one of OSU Panama's flush sisters. This is another halter broke heifer with a calm demeanor. The Double Take calves have been outstanding.

- Breeding information available sale day.

SWEAN	SPEEDLOT	\$GRID	\$BEEF
+24.45	+28.78	+19.11	+42.63



42

43 J&J EMPRESS 783

Calved: 4/25/2007 • Cow: 15854021 • Tattoo: 783

J&J Double Take 550
+15132206

+PF E161 Bardolena 3153

#Bon View New Design 1407
N Bar Primrose 2424
#Twin Valley Precision E161
GK Betsy Bardolena 323A

OSU Empress 4172
+14736974

#BR Midland
+OSU Empress 6188

#Twin Valley Precision E161
BR Royal Lass 7036-19
#+Krugerrands Moneyline
+DF Empress 6079

BW EPD	WW EPD	YW EPD	SC EPD	MILK EPD	%IMF EPD	UREA EPD
+1.3	+48	+88		+17		

A very nice April heifer that is a maternal sister to lots 14 and 41 and sired by Double Take. This heifer's pedigree combines the powerful Betsy Bardolena and Empress cow lines together! Although this heifer was too young when scanned to be ratioed against her contemporaries, she had over 5% IMF with only .23 inch of rib fat and at 850 pounds recorded an adjusted ribeye of over 13 square inches. An excellent replacement female! Co-owned with A-Cross.

- Breeding information available sale day.

SWEAN	SPEEDLOT	\$GRID	\$BEEF
+26.82	+28.61		



MCS

J&J Double Take 550 — Sire of Lots 42 & 43
To this point, Double Take has been used in three herds, where his offspring are averaging the following ratios: 96 at birth, 102 at weaning, 102 at yearling, 100 for IMF and 103 for REA.



44 J&J BLANCHE 5113

Calved: 3/05/2005 • Cow: +15132182 • Tattoo: 5113

BR Midland
#13898124

#Twin Valley Precision E161
BR Royal Lass 7036-19

#GAR Precision 1680
+WCC Blackcap C9
#+SAF Neutron
#SAF Royal Lass 7036

Leachman Blanche 1218
+13874670

#Connealy Frontline
Leachman Blanche 5001

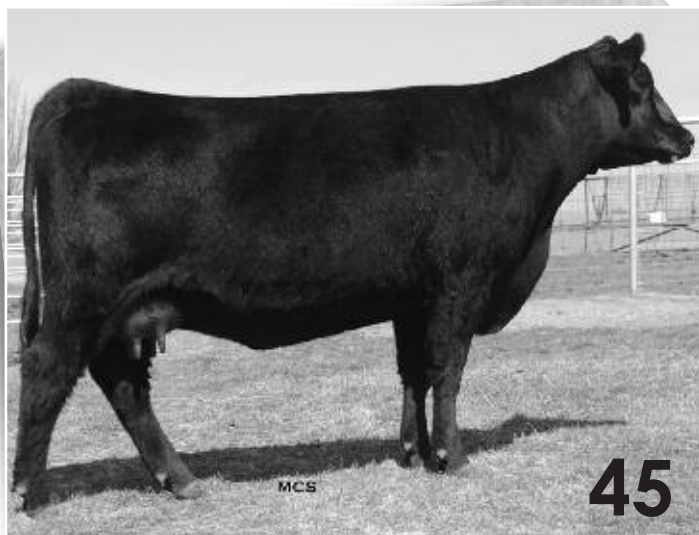
#Connealy Dateline
#Pleasant Pill of Conanga
#Tehama Bando 155
Leachman Blanche 3007

BW EPD	WW EPD	YW EPD	SC EPD	MILK EPD	%IMF EPD	UREA EPD
+2.1	+44	+82	1 +.40	+17	+4.9	+34

A heavy boned, long patterned Midland daughter that was produced by one of our foundation donors. 5113 had an individual scan ratio of 125 as a yearling, and her first natural calf recently ratioed 122 for IMF. 5113 ranks in the best 2% of current dams for Ultrasound IMF EPD.

• Will calve in April to TC TOTAL 410.

SWEAN	\$FEEDLOT	SGRID	\$BEEF
+24.24	+24.12	+26.92	+46.48



45 J&J 1407 JILT 505

Calved: 1/30/2005 • Cow: +15131139 • Tattoo: 505

Bon View New Design 1407
#12783540

#B/R New Design 036
Bon View Pride 664

#VDAR New Trend 315
B/R Blackcap Empress 76
#+GAR Sleep Easy 1009
#Bon View Pride 1551

OSU Jilt 2103
14127428

#E&B 1483 Scotchman 5041
OSU Ultress 5125

#RR 9440 Scotch Cap 1483
Lady 183 Traveler 334
#+OSU 6T6 Ultra
+ROR Jilt 147V

BW EPD	WW EPD	YW EPD	SC EPD	MILK EPD	%IMF EPD	UREA EPD
+2.0	+41	+79	1 +.26	+25	+32	+16

This direct daughter of OSU Jilt 2103 is a maternal sister to several past sale features and high selling females at J&J. The Jilt cow family has done a great job for us. 505 recorded a ratio of 114 for yearling IMF, and her first natural calf weaned at a ratio of 105. Make sure and take a look at her impressive March heifer calf sired by Stevenson Moneymaker.

45A Heifer calf born 3/12/2008, tattoo 857, by STEVENSON MONEYMAKER R185. BW 72 lbs.

SWEAN	\$FEEDLOT	SGRID	\$BEEF
+25.21	+22.29	+21.41	+40.08



46 BLACKJACKS JANET 535

Calved: 1/19/2005 • Cow: 15069864 • Tattoo: 535

Twin Valley Precision E161
#12346200

#GAR Precision 1680
+WCC Blackcap C9

#Tehama Bando 155
9J9 GAR 856
#SS Traveler 6T6
Premier Blackcap 6276A

Janet of RR 8547
#13176020

#E&B 1483 Scotchman 5041
Janet of RR 5639

#RR 9440 Scotch Cap 1483
Lady 183 Traveler 334
GDAR Express 3373
Janet of RR 3444

BW EPD	WW EPD	YW EPD	SC EPD	MILK EPD	%IMF EPD	UREA EPD
+2.1	+28	+71		+12	1 +.37	+47

A very deep ribbed female here that we purchased from the Grissom family as a heifer calf. Long, sound and big volumed, she sells with a bull calf sired by Stevenson Moneymaker.

46A Bull calf born 3/16/2008, tattoo 861, by STEVENSON MONEYMAKER R185. BW 91 lbs.

SWEAN	\$FEEDLOT	SGRID	\$BEEF
+13.20	+19.36	+22.54	+39.83

SPRING COW/CALE PAIRS



47 J&J BLACKBIRD 6644

Calved: 2/14/2006 • Cow: 15276791 • Tattoo: 6644

EXAR Nominal 3550
14343264 +R3 Lass L1
+EXAR Merit 216

Blackbird of RR 4132
14774817 Blackbird of RR 5611

#Twin Valley Precision E161
BR Royal Lass 7036-19
#Connealy Dateline
+Leachman Lass 1109
#Bon View New Design 1407
Dixie Erica of RR 7530
#GDAR Quantum 1245
Blackbird of RR 5217

BW EPD	WW EPD	YW EPD	SC EPD	MILK EPD	%IMF EPD	UREA EPD
+0.6	+46	+82		+20	+31	+19

This daughter of the cow selling as Lot 25 ratioed 122 for yearling IMF. Her impressive pedigree tabulation ties tighter the Dixie Erica and Leachman Lass cow families. 6644 ranks in the best 10% of active dams for \$Beef.

47A Heifer calf born 2/03/2008, tattoo 822, by BASIN FRANCHISE P142. BW 67 lbs.



48 J&J BLACKBIRD 6621

Calved: 2/10/2006 • Cow: 15276770 • Tattoo: 6621

HA Image Maker 0415
+13739532 HA Rito Blackcap 9038
+RR Gold Buckle 2225

Rollin Rock Blackbird 4191
14774832 Rollin Rock Blackbird 9964

#RR Hero 6268
RR Everelda Entense 0413
H 96 Rito 2100 7371
H 96 Blackcap 3835
#SAF Focus of ER
RR Everelda Entense 0413
#Lukens 711 Buster 3163
Rollin Rock Blackbird 3514

BW EPD	WW EPD	YW EPD	SC EPD	MILK EPD	%IMF EPD	UREA EPD
+3.7	+53	+88		+29	+34	-13

This Image Maker daughter, whose dam sells as Lot 26, had a yearling ultrasound IMF ratio of 136 and ranks in the breed's best 10% of active dams for \$Beef. Maternal sister sells as Lot 62.

48A Bull calf born 4/01/2008, tattoo 875, by J&J NEW DESIGN 6114. BW 83 lbs.



49 J&J BLACKBIRD 6606

Calved: 2/09/2006 • Cow: 15269108 • Tattoo: 6606

HA Image Maker 0415
+13739532 HA Rito Blackcap 9038
E7B 1680 Precision 151

Blackbird of RollinRock 4314
14774871 Blackbird of RollinRock 2368

#RR Hero 6268
RR Everelda Entense 0413
H 96 Rito 2100 7371
H 96 Blackcap 3835
#GAR Precision 1680
E&B Lady 4137 EXT 945
JR Ambush 293I
Blackbird of RR 0291

BW EPD	WW EPD	YW EPD	SC EPD	MILK EPD	%IMF EPD	UREA EPD
+2.3	+53	+89		+28	+00	+58

A high milk Image Maker daughter that had a ratio of 118 for ultrasound REA and ranks in the best 3% of active dams in her EPD for this trait. Sells with a big, stout bull calf at side by MoneyMaker.

49A Bull calf born 2/28/2008, tattoo 849, by STEVENSON MONEYMAKER R185. BW 95 lbs.

50 JACS FOREVER LADY 5217

Calved: 2/08/2005 • Cow: +15244668 • Tattoo: 5217

N Bar Emulation EXT
#10776479

Rocky MT Forever Lady 715
+12978876

#Emulation N Bar 5522
N Bar Primrose 2424
#DHD Traveler 6807
+GDAR Forever Lady 9500

#Emulation 31
Ankony 8F78 Lass 8F275
#Emulation 31
Primrose N Bar 9962
#QAS Traveler 23-4
#Bemindful Maid DHD 0807
#Rito 2100 GDAR
#LT Forever Lady 395 GDAR

BW EPD	WW EPD	YW EPD	SC EPD	MILK EPD	%IMF EPD	UREA EPD
+1.3	+32	+61	-1.25	+17	-.01	+12

This moderate framed EXT daughter did a tremendous job with her first natural calf, who is in our set of yearling replacement females. I thank Pat Haley of Jacs Ranch for telling me about this cow family—both 5217 and her sister 5216 have done a great job for J&J.

• Will calve between sale day and 6/14/2008 to J&J NEW DESIGN 6114.



51 KW EQUAL QUEEN 15P

Calved: 3/13/2004 • Cow: 14982023 • Tattoo: 15P

KWF Equator C17L
13846860
+Leachman Lass 1125

Quail Meadow Queen C14G
12893637
+Quail Meadow Queen C51E

#Papa Equator 2928
#Papa Power 096
#Papa Envious Blackbird 8849
#AAR New Trend
+Leachman Lass 402L
#DHD Traveler 6807
#QAS Traveler 23-4
#Bemindful Maid DHD 0807
#Rito 2100 GDAR
+Leachman Queen 1117

BW EPD	WW EPD	YW EPD	SC EPD	MILK EPD	%IMF EPD	UREA EPD
+3.3	+35	+69		+24	1	-.06

This solid producing C17L daughter traces back to 6807. Her dam is still working in the A-Cross herd and has a sound, functional udder. 15P's Milk EPD ranks in the top 15% of Angus dams. Owned by A-Cross.

SWEAN	\$FEEDLOT	\$GRID	\$BEEF
+20.79	+14.78	+9.97	+23.45

51A Heifer calf born 3/19/2008, tattoo 865, by J&J DOUBLE TAKE 550. BW 66 lbs.



52 BEB PRIMROSE 320

Calved: 3/10/2003 • Cow: +14430542 • Tattoo: 320

SAF 598 Bando 5175
#+12350821
+SAF Royal Lass 1002

PARB Primrose 9568
+13561076
PARB Primrose 5968

#Bon View Bando 598
#Tehama Bando 155
#Bon View Dora 56
#VDAR New Trend 315
+SAF Royal Lass 6089
#Traveler 1148 GDAR
+VDAR Pine Drive Lucy 5
#Finks 5522-6148
PAR 155 Primrose 968

BW EPD	WW EPD	YW EPD	SC EPD	MILK EPD	%IMF EPD	UREA EPD
+4.4	+50	+95		+23	+	.08

320 is an attractive, deep bodied female whose powerful growth EPDs rank in the best 2% of Angus dams for YW and \$F and the best 5% for WW. She has been in our ET program and flushes well. We are retaining her daughters in the herd and are confident that this would be a great cow in any program. Owned by A-Cross.

SWEAN	\$FEEDLOT	\$GRID	\$BEEF
+21.62	+35.01	+12.09	+37.87

52A Bull calf born 3/25/2008, tattoo 871, by J&J DOUBLE TAKE 550. BW 78 lbs.

53 KW EQUAL LASS 18P

Calved: 3/13/2004 • Cow: 14982025 • Tattoo: 18P

KWF Equator C17L
13846860
+Leachman Lass 1125

Quail Meadow Lass C36H
13138018
+Quail Meadow Lass C511E

#Papa Equator 2928
#Papa Power 096
#Papa Envious Blackbird 8849
#AAR New Trend
+Leachman Lass 402L
#CH Stacker 7040
#DBCS Rito Elba U530
#GT Maximum
+Leachman Lass 1105

BW EPD	WW EPD	YW EPD	SC EPD	MILK EPD	%IMF EPD	UREA EPD
+4.1	+39	+73		+18	1	+.02

18P's calves have had an average weaning ratio of 103 in our herd. She is a great calf raiser, as are all the C17L daughters. Owned by A-Cross.

53A Bull calf born 3/12/2008, tattoo 858, by J&J DOUBLE TAKE 550. BW 75 lbs.

SWEAN	\$FEEDLOT	\$GRID	\$BEEF
+19.07	+17.15	+13.20	+29.15

54 KW EQUAL COLLEEN 8P

Calved: 3/08/2004 • Cow: 14982032 • Tattoo: 8P

KWF Equator C17L
13846860
+Leachman Lass 1125

KFF Fortunate Colleen 598H
13045251
GK Colleen Rito 301Z

#Papa Equator 2928
#Papa Power 096
#Papa Envious Blackbird 8849
#AAR New Trend
+Leachman Lass 402L
#Stevenson Fortune 425C
Gardens Fortune 9213 S2
#JRS Enchantress 235Z
#Rito 054 GDAR
GK New Colleen 321R

BW EPD	WW EPD	YW EPD	SC EPD	MILK EPD	%IMF EPD	UREA EPD
+3.4	+32	+54		+18	1	+.02

We are retaining 8P's New Look daughter in the herd—her IMF ratio was 116 and yearling ratio was 112. The Double Take calves are quite good and have been impressive, and the heifer calf at her side should be no exception. Owned by A-Cross.

54A Heifer calf born 3/22/2008, tattoo 870, by J&J DOUBLE TAKE 550. BW 75 lbs.

SWEAN	\$FEEDLOT	\$GRID	\$BEEF
+20.53	+1.79	+14.50	+16.78



55 PF 104 KEM 3406

Calved: 1/09/2003 • Cow: +14387222 • Tattoo: 3406

TC Freedom 104
#13977765

#Connealy Forefront
#TC Ruby 9095

#Connealy Frontline
Eileen Heartland Conanga6443
#TC Stockman 365
#+TC Ruby 4068

WK Miss Kem 6608
+12744412

#Rito 2RT2 of 0B5 RR Traveler
Lukens 6807 Kem 3956

#RR Traveler 5204
Rita 0B5 of 8E23 Bando
#DHD Traveler 6807
GDAR Kem 956

BW EPD	WW EPD	YW EPD	SC EPD	MILK EPD	%IMF EPD	UREA EPD
+3.5	+47	+87	I +.58	+28	-.01	+.12

Another solid, productive female who ranks among the best 5% of Angus dams for Milk and the best 10% for Weaning and Yearling. The genetics in her Double Take calf should be very valuable. Owned by A-Cross.

55A Bull calf born 3/06/2008, tattoo 853, by J&J DOUBLE TAKE 550. BW 83 lbs.

SWEAN	\$FEEDLOT	\$GRID	\$BEEF
+25.78	+27.99	+8.86	+31.27



TC Freedom 104 — Sire of Lots 55 & 57

56 BA GRID MARTHA 304

Calved: 2/11/2003 • Cow: 14405168 • Tattoo: 304

GAR Grid Maker
#+13254554

#GDAR Traveler 044
GAR Precision 2536

#DHD Traveler 6807
#GDAR Blackcap Lady 840
#GAR Precision 1680
+GAR EXT 2104

WK Martha 8025
13171146

#+Ideal 5411 of 1418 972
#WK Martha 5059

#Ideal 1418 of 8103 4286
Ideal 972 of 7365 7312
Gardens Fortune 132 S1
#WK Martha 3725

BW EPD	WW EPD	YW EPD	SC EPD	MILK EPD	%IMF EPD	UREA EPD
+3.9	+56	+102	I +.35	+14	-.02	+.51

This Grid Maker daughter is moderate, deep bodied and sound. Her growth traits rank in the top 1% of Angus dams for WW, YW and \$F combined with a top 5% UREA EPD and a top 10% \$B Index. Her calves' average ratios for IMF and REA have been 113 and 103, respectively. Owned by A-Cross.

56A Bull calf born 3/27/2008, tattoo 872, by J&J DOUBLE TAKE 550. BW 77 lbs.

SWEAN	\$FEEDLOT	\$GRID	\$BEEF
+32.55	+39.92	+10.24	+40.11



GAR Grid Maker — Sire of Lot 56

57 BGAR DOLL 5029

Calved: 9/18/2005 • Cow: 15313432 • Tattoo: 5029

TC Freedom 104
#13977765

#Connealy Forefront
#TC Ruby 9095

#Connealy Frontline
Eileen Heartland Conanga6443
#TC Stockman 365
#+TC Ruby 4068

Jacs Lucy 5543
13069677

#Sitz Traveler 8180
Jacs Lucy 5543

#GDAR Traveler 71
Sitz Everelda Entense 1137
#GAR Precision 1680
Hyline Lucy 523

BW EPD	WW EPD	YW EPD	SC EPD	MILK EPD	%IMF EPD	UREA EPD
+3.8	+51	+95	I +.71	+26	+.06	+.23

This former show heifer ranks in the best 15% of non-parent females for WW, YW and Milk EPDs. Owned with John Freeman.

57A Heifer calf born 11/23/2007, tattoo 7061, by SS OBJECTIVE T510 OT26. BW 66 lbs.

SWEAN	\$FEEDLOT	\$GRID	\$BEEF
+24.59	+34.61	+10.72	+36.30

58 BLACKBIRD 6A3 OF 1262 004

Calved: 2/13/2006 • Cow: +15355867 • Tattoo: 6A3

SAV 8180 Traveler 004
13512009

#Sitz Traveler 8180
+Boyd Forever Lady 8003

#GDAR Traveler 71
Sitz Everelda Entense 1137
#AAR New Trend
SVF Forever Lady 57D

Daltons Blackbird 1262
+14024399

#GAR Precision 1680
OCC Blackbird 833E

#Tehama Bando 155
9J9 GAR 856
#DHD Traveler 6807
OCC Blackbird 778A

BW EPD	WW EPD	YW EPD	SC EPD	MILK EPD	%IMF EPD	UREA EPD
I +2.8	I +47	I +90	I +.37	I +21	I -.02	I +.39

Blackbird 1262, the dam of 6A3, is a \$30,000-valued donor in the Limestone and Black Gold Angus programs sired by the total performance and carcass sire GAR Precision 1680. Owned with John Freeman.

58A Bull calf born 2/24/2008, tattoo 8011, by BASIN FRANCHISE P142. BW 74 lbs.

SWEAN	\$FEEDLOT	\$GRID	\$BEEF
+23.96	+31.05	+14.97	+40.04

FALL HEIFERS Sired by EMBLAZON



63

J&J RACQUEL 789

Calved: 10/02/2007 • Cow: 15972354 • Tattoo: 789

OCC Emblazon 854E
#12514348

#DHD Traveler 6807
Dixie Erica of CH 1019

#QAS Traveler 23-4
#Bemindful Maid DHD 0807
#PBC 707 1M F0203
Dixie Erica of CH 615

J&J Racquel 5138
+15385358

#CA Future Direction 5321
+OSU 6079 Racquel 8176

#GAR Precision 1680
CA Miss Power Fix 308
#N Bar Emulation EXT
+DF Empress 6079

BW EPD	WW EPD	YW EPD	SC EPD	MILK EPD	%IMF EPD	UREA EPD
S: +0.8	+48	+77	-.29	+10	I +.19	I +.47
D: +0.9	I +38	I +69	I -.39	I +27		

A really big ribbed brood cow prospect produced by a heavy milking daughter of Future Direction.

SWEAN	SPEEDLOT	\$GRID	\$BEEF
S: +37.95	+17.65	+15.37	+29.18
D: +28.29	+13.66	+26.86	+41.39

• Sells open.



63

64

J&J RACQUEL 795

Calved: 10/23/2007 • Cow: 15972355 • Tattoo: 795

OCC Emblazon 854E
#12514348

#DHD Traveler 6807
Dixie Erica of CH 1019

#QAS Traveler 23-4
#Bemindful Maid DHD 0807
#PBC 707 1M F0203
Dixie Erica of CH 615

J&J Racquel 5129
+15352656

#E&B 1483 Scotchman 5041
+OSU 6079 Racquel 8176

#RR 9440 Scotch Cap 1483
Lady 183 Traveler 334
#N Bar Emulation EXT
+DF Empress 6079

BW EPD	WW EPD	YW EPD	SC EPD	MILK EPD	%IMF EPD	UREA EPD
S: +0.8	+48	+77	-.29	+10	I +.06	I +.42
D: +1.8	I +34	I +69	I +.02	I +16		

The dam of this heifer is a typical 5041 daughter—bold sprung, big ribbed, deep and powerful.

SWEAN	SPEEDLOT	\$GRID	\$BEEF
S: +37.95	+17.65	+15.37	+29.18
D: +20.42	+15.15	+16.96	+31.21

• Sells open.



64

65

J&J DIXIE ERICA 790

Calved: 10/03/2007 • Cow: 16004008 • Tattoo: 790

OCC Emblazon 854E
#12514348

#DHD Traveler 6807
Dixie Erica of CH 1019

#QAS Traveler 23-4
#Bemindful Maid DHD 0807
#PBC 707 1M F0203
Dixie Erica of CH 615

J&J Dixie Erica 5136
+15352663

#BR Midland
+J&J Dixie Erica 227

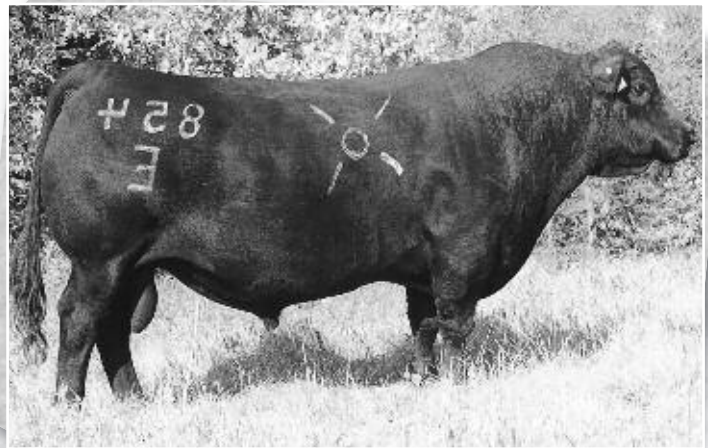
#Twin Valley Precision E161
BR Royal Lass 7036-19
#B/R New Design 323
Dixie Erica of RR 7530

BW EPD	WW EPD	YW EPD	SC EPD	MILK EPD	%IMF EPD	UREA EPD
S: +0.8	+48	+77	-.29	+10	I +.28	I +.46
D: +1.3	I +39	I +76	I +.38	I +16		

The dam of this heifer, Dixie Erica 5136, is one of the highest IMF females in the J&J herd.

SWEAN	SPEEDLOT	\$GRID	\$BEEF
S: +37.95	+17.65	+15.37	+29.18
D: +23.23	+20.09	+29.85	+46.09

• Sells open.



OCC Emblazon 854E —

Lots 63–65 are a very nice trio of heifers that combine the low maintenance maternal influence of OCC Emblazon with some of the strongest cow families at J&J.



OSU 6079 Racquel 8176 — Dam of Lots 66 & 73



66 J&J RACQUEL 794

Calved: 10/23/2007 • Cow: +15970869 • Tattoo: 794

Schurrtop MC 2500
14840227

Schurrtop MC
Schurrtop RS 1413 2153

#Papa Equator 2928
Schurrtop 1483 9024
Brooks Schurr Trend
Ryans Schurrtop 2125

OSU 6079 Racquel 8176
+13068513

#N Bar Emulation EXT
+DF Empress 6079

#Emulation N Bar 5522
N Bar Primrose 2424
#Pine Drive Big Sky
KAF Miss Jetliner 641 1B4

BW EPD	WW EPD	YW EPD	SC EPD	MILK EPD	%IMF EPD	UREA EPD
I +3.2	I +43	I +78	I +.08	I +22	I +.04	I +.45

A flush sister to this heifer was Reserve Champion at the 2007 Tulsa State Fair Junior Show. This heifer is green but has potential. A maternal brother sells as Lot 73.

SWEAN	\$FEEDLOT	\$GRID	\$BEEF
+23.63	+20.53	+16.26	+35.15

- Sells open.

67 J&J JILT 7002

Calved: 11/05/2007 • Cow: 15969016 • Tattoo: 7002

KF Bushwacker 735
+15243973

#BCC Bushwacker 41-93
#Bon View Princess 134

#Paramont Ambush 2172
RC Anita T Bando 918903
#Bon View Bando 598
Bon View Princess 1072

3F Jilt 4636 of 5133 EXT
+14899940

#N Bar Emulation EXT
OSU 6807 Jilt 5133

#Emulation N Bar 5522
N Bar Primrose 2424
#DHD Traveler 6807
#OSU 869B Jilt 130C

BW EPD	WW EPD	YW EPD	SC EPD	MILK EPD	%IMF EPD	UREA EPD
I +1.6	I +44	I +77		I +16	I +.14	I +.22

The dam of this heifer, a female that descends from the Jilt line, will become a donor after she calves this fall. At the time of this writing, we are waiting to get adjusted weaning weights back from AHIR, and I anticipate that this heifer will be the heaviest. She is really long and big volumed and is backed by a great cow family.

SWEAN	\$FEEDLOT	\$GRID	\$BEEF
+26.19	+19.17	+14.46	+32.84

- Sells open.

68 J&J BLACKBIRD 7003

Calved: 11/19/2007 • Cow: 15969017 • Tattoo: 7003

J&J Improvement 5133
+15352660

#Northern Improvement 4480 GF
+J&J Queenie 9206

#TC Stockman 365
Blackcap of RR 5367
#A&B Yukon 7150
C&C Queen 418

J&J 1407 F011 576
15132218

#Bon View New Design 1407
PAF 861 AT F011

#B/R New Design 036
Bon View Pride 664
#Alberda Traveler 416
PAF 328 EXT 861

BW EPD	WW EPD	YW EPD	SC EPD	MILK EPD	%IMF EPD	UREA EPD
S: I +2.1 D: +1.8	I +45 +40	I +87 +80	+24 I +.23	I +17 +30	I +.13	I +.22

7003's sire is another product of the 9206 cow. This heifer's maternal grandam was a donor that sold in our 2006 sale.

SWEAN	\$FEEDLOT	\$GRID	\$BEEF
S: +23.47 D: +25.89	+28.78 +23.67	+10.11 +22.35	+33.23 +40.56

- Sells open.





The Yearling Bulls

selling as Lots 69-75, have been running in a large trap and getting plenty of exercise. They (and the bull selling as Lot 13) were grown out here on the ranch on a forage-based diet in a quarter-mile long run. Rugged and range ready, these bulls sell guaranteed for fertility and breeding soundness through the first year.

Lots 69, 70 & 71:

Schurrtop MC 2500 14840227	Schurrtop MC Schurrtop RS 1413 2153	#Papa Equator 2928 Schurrtop 1483 9024 Brooks Schurr Trend Ryans Schurrtop 2125
OSU Empress 4172 +14736974	#BR Midland +OSU Empress 6188	#Twin Valley Precision E161 BR Royal Lass 7036-19 #+Krugerrands Moneyline +DF Empress 6079

Flush sisters sell as Lots 14 and 41.



69 J&J MC 769

Calved: 3/15/2007 • Bull: +15856850 • Tattoo: 769

BW EPD	WW EPD	YW EPD	SC EPD	MILK EPD	%IMF EPD	UREA EPD
I +3.3	I +44	I +82		I +18	I +.15	I +.51

\$WEAN	\$FEEDLOT	\$GRID	\$BEEF
+21.99	+24.12	+19.35	+40.44

BW 83 lbs. Adj. WW 778 lbs. Adj. YW 1248 lbs. Adj. %IMF 4.58.
Adj. REA 14.1 sq. in. Owned with A-Cross.

70 J&J MC 759

Calved: 3/07/2007 • Bull: +15856848 • Tattoo: 759

BW EPD	WW EPD	YW EPD	SC EPD	MILK EPD	%IMF EPD	UREA EPD
I +3.3	I +44	I +82		I +18	I +.13	I +.49

\$WEAN	\$FEEDLOT	\$GRID	\$BEEF
+21.99	+24.12	+19.27	+40.36

BW 83 lbs. Adj. WW 722 lbs. Adj. YW 1215 lbs. Adj. %IMF 4.43.
Adj. REA 13.9 sq. in. Owned with A-Cross.

71 J&J MC 766

Calved: 3/10/2007 • Bull: +15856849 • Tattoo: 766

BW EPD	WW EPD	YW EPD	SC EPD	MILK EPD	%IMF EPD	UREA EPD
I +3.3	I +44	I +82		I +18	I +.13	I +.67

\$WEAN	\$FEEDLOT	\$GRID	\$BEEF
+21.99	+24.12	+19.94	+41.03

BW 82 lbs. Adj. WW 754 lbs. Adj. YW 1320 lbs. Adj. %IMF 4.45.
Adj. REA 15.5 sq. in. Owned with A-Cross.



73 J&J BENCHMARK 7111

Calved: 3/01/2007 • Bull: +15854026 • Tattoo: 7111

Stevenson Benchmark N190
14368434
#CA Future Direction 5321
Stevenson Elga L706

OSU 6079 Racquel 8176
+13068513
#N Bar Emulation EXT
+DF Empress 6079

#GAR Precision 1680
CA Miss Power Fix 308
+Stevenson Comstock 345J
+Stevenson Elga 644G

#Emulation N Bar 5522
N Bar Primrose 2424
#Pine Drive Big Sky
KAF Miss Jetliner 641 1B4

BW EPD	WW EPD	YW EPD	SC EPD	MILK EPD	%IMF EPD	UREA EPD
I +1.3	I +36	I +68	I -.13	I +27	I +.49	I +.35

Maternal sister sells as Lot 66. A maternal brother is in service for A-Cross Ranch.

SWEAN	\$FEEDLOT	\$GRID	\$BEEF
+26.60	+13.44	+28.14	+40.99

BW 70 lbs. Adj. WW 672 lbs. Adj. YW 1157 lbs. Adj. %IMF 4.29.
Adj. REA 13.4 sq. in.



72 J&J INTEGRITY 7114

Calved: 3/05/2007 • Bull: +15854025 • Tattoo: 7114

GAR Integrity
+14222612

#Bon View New Design 1407
GAR Precision 1019

#B/R New Design 036
Bon View Pride 664
#GAR Precision 1680
#+GAR EXT 755

OSU Chantilly 6184
12704785

#+Rito 9FB3 of 5H11 Fullback
OSU Miss Promise 605A

#Leachman Fullback
Rita 5H11 of 1B14 Rito 9J9
#+Leachman Prompter
#OSU Miss Piney 605

BW EPD	WW EPD	YW EPD	SC EPD	MILK EPD	%IMF EPD	UREA EPD
I +2.1	I +41	I +72	I -.22	I +24	I +.14	I +.41

Maternal sister sells as Lot 59.

SWEAN	\$FEEDLOT	\$GRID	\$BEEF
+31.61	+15.43	+19.07	+33.88

BW 74 lbs. Adj. WW 672 lbs. Adj. YW 1138 lbs. Adj. %IMF 4.27.
Adj. REA 13.8 sq. in.

74 RR PREDESTINED 7002

Calved: 2/06/2007 • Bull: 15680206 • Tattoo: 7002

GAR Predestined
#13395344

#B/R New Design 036
#+GAR EXT 4206

Blackjacks Burgess 413
14754510

#CA Future Direction 5321
ALC Burgess 9247

#VDAR New Trend 315
B/R Blackcap Empress 76
#N Bar Emulation EXT
+GAR 6807 Traveler 1432

#GAR Precision 1680
CA Miss Power Fix 308
#+VDAR Lucys Boy
Partisover Burgess 6105

BW EPD	WW EPD	YW EPD	SC EPD	MILK EPD	%IMF EPD	UREA EPD
I +3.1	I +46	I +86		I +26	I +.60	I +.66

This Predestined son's outstanding scan data rank him among the best 1% of the breed's non-parent bulls for \$B, best 2% for \$G, best 3% for IMF and best 5% for UREA.

SWEAN	\$FEEDLOT	\$GRID	\$BEEF
+25.08	+27.37	+31.60	+57.75

BW 81 lbs. Adj. WW 717 lbs. Adj. YW 1173 lbs. Adj. %IMF 6.64.
Adj. REA 15.1 sq. in. Adj. SC 42 cm.



75 J&J FUTURE DIRECTION 7115

Calved: 3/10/2007 • Bull: +15858556 • Tattoo: 7115

CA Future Direction 5321
#12493607
CA Miss Power Fix 308

#GAR Precision 1680

J&J Queenie 9206
+13412890

#+A&B Yukon 7150
C&C Queen 418

#Tehama Bando 155
9J9 GAR 856
#+SAF Power Fix
CA Lady Eight 1015
#Krugerrand of Donamere 490
+A&B Queen 4173
Bando of Conanga 573
WK Queen 2147

BW EPD	WW EPD	YW EPD	SC EPD	MILK EPD	%IMF EPD	UREA EPD
I +2.8	I +45	I +88	I -.05	I +19	I +.34	I +.15

Full brother to Lots 6A-B. Maternal brother to Lots 7-10.

SWEAN	\$FEEDLOT	\$GRID	\$BEEF
+22.44	+29.80	+22.50	+46.66

BW 72 lbs. Adj. WW 682 lbs. Adj. YW 1226 lbs. Adj. %IMF 6.89.
Adj. REA 11.6 sq. in.

J&J Future Direction 7118 —
Junior herd sire at J&J and flush brother to Lot 75

SALE TERMS & CONDITIONS



Except for those stated in the below terms and conditions, there are no warranties, either expressed or implied, as to the merchantability or fitness for a particular purpose with respect to the cattle being sold at this auction.

The warranties and guarantees set forth in the "Terms and Conditions" are in lieu of all other warranties, either expressed or implied, and the remedies provided therein shall be the sole and exclusive remedy of the buyer, or any party claiming through buyer, for any breach of warranty or guarantee therein provided and all other obligations or liabilities.

BIDDING: Each animal will be sold to the highest bidder. The auctioneer will settle any disputes as to bids, and his decision on such matters shall be final.

TERMS: Terms of sale are cash unless satisfactory credit arrangements have been made with vendor previous to sale.

PURCHASER'S RISK: Each animal becomes the risk of the purchaser as soon as sold, but it shall be the obligation of the seller to see that animals are fed and cared for free of charge to purchaser until loaded for shipment or until the expiration of (48) hours after the sale, whichever occurs sooner.

CERTIFICATE OF REGISTRY: A transferred certificate of registry will be furnished to the purchaser of each animal after full settlement has been made. Calves born before the sale will be registered by the seller; calves born after the sale will be registered by the buyer. Proper breeding statements will be signed by the seller for registering calves born after the sale.

HERD HEALTH: All cattle will be accompanied by proper health certificates for immediate interstate shipment. All calves are wormed and vaccinated with a 7-way Clostridial, 4-way for BVD, IBR, PI3 and BRSV, and Pasteurella Bacterin Toxoid by three months of age and again at weaning. All females of age are officially calfhooed vaccinated. Yearling heifers and the cow herd are wormed and vaccinated twice annually with a 7-way Clostridial, 4-way for BVD, IBR, PI3 and BRSV, and Lepto/Vibrio with Spirovac®. All cattle selling are up to date on vaccinations and worming.

ANNOUNCEMENTS: Any changes from information of any kind in the catalog will be announced from the auction box, and such announcements shall take precedence.

EXPECTED PROGENY DIFFERENCES (EPDs): The EPDs stated in the catalog were current at press time. However, we cannot guarantee that an animal's EPDs will be the same as listed herein, as they are constantly being updated.

BREEDING GUARANTEE:

1. All animals are guaranteed to be breeders with the exception of a) Calves under twelve (12) months of age; b) In the event of any injury or disease that occurs to the animal after sale; c) Gross negligence or willful misconduct on the part of the purchaser; or, d) Females used in embryo transplant.
2. Females sold as "safe in calf" have been examined by a competent veterinarian or other reproductive technician and are so guaranteed to be with calf and thus are considered breeders without further guarantee.
3. The yearling heifers and most of the spring-calving cows will have been bred A.I. by sale day but are not being sold as safe in calf. All fall-calving cows are being sold safe in calf. An updated breeding/calving report will be available sale day. Announcements made from the auction block will take precedence over all printed material.

4. Cows with calves at side are presumed to be breeders with no further fertility guarantee.

5. Any guarantee with respect to embryo transplant production shall be a separate agreement between buyer and seller.

6. Animals resold following purchase in this sale shall constitute a separate transaction, and the rights and obligations of the two parties connected thereto are not covered by the terms and conditions of this sale.

IDENTIFICATION:

1. Seller offers each animal with a readable tattoo corresponding to its registration.
2. Buyer agrees to check tattoos for accuracy.
3. In those cases where a nickname is used, it shall be accompanied by the official registered name and number of the animal.

OPTIONS AND PRIVILEGES OF RETURN OR ADJUSTMENT:

1. All claims for adjustments or refunds must be made in writing either within six (6) months of the date of the sale or no later than 6 months after the animal reaches eighteen (18) months of age, whichever occurs latter.
2. In the event that an animal is claimed to be a non-breeder, that animal must be returned to J&J Cattle Company in good condition and must have met the health requirements of the State of Oklahoma. The seller shall be entitled to 6 months trial following the return of the animal in which to prove that the animal is a breeder. If at the end of 6 months the seller has been unable to prove the animal as a breeder, the seller shall, at the option of the buyer, replace the animal with another of equal value or refund the total purchase price. The return of the purchase price shall in all cases be deemed as full settlement. Any expense incurred in transporting the animal that is claimed to be a non-breeder shall be the responsibility of the purchaser. If the seller proves the animal to be a breeder, it shall be the obligation of the purchaser to take delivery of the animal and pay all expenses incurred for transportation. The return of an animal at the expense of the purchaser with a refund of the purchase price made by the seller is in all cases considered to be a complete settlement.

RIGHTS AND OBLIGATIONS:

1. The above terms and conditions of sale shall constitute a contract between the buyer and seller of each animal and shall be equally binding upon both. Each sale or resale of an animal constitutes a separate transaction.
2. All persons who attend the sale do so at their own risk. Neither J&J Cattle Co., the sale managers nor any other person connected with the sale assumes liability, legal or otherwise, for accidents or loss of property.

Catalog Abbreviations

PRODUCTION EPDs:

BW EPD—Birth Weight, expressed in pounds.

WW EPD—Weaning Weight Direct, expressed in pounds.

YW EPD—Yearling Weight, expressed in pounds.

SC EPD—Scrotal Circumference, expressed in centimeters.

Milk EPD—Weaning Weight Maternal, expressed in pounds, is a predictor of an animal's genetic merit for milk and mothering ability. In other words, it is that part of weaning weight attributed to milk and mothering ability.

ULTRASOUND EPDs:

Derived from real time ultrasound scanning measurements processed through Centralized Ultrasound Processing (CUP).

%IMF EPD—Intramuscular Fat is a predictor of the difference in an animal's progeny for percent intramuscular fat in the ribeye muscle.

UREA EPD—Ribeye Area is a predictor of the differences in square inches of ribeye area of an animal's progeny.

\$VALUE INDEXES: Expressed in dollars per head, \$Values are multi-trait selection indexes to assist commercial beef producers by adding simplicity to genetic selection decisions.

\$WEAN—Weaned Calf Value. Preweaning merit, based on both revenue and cost adjustments for birth weight, weaning weight, milk and mature cow size.

\$FEEDLOT—Feedlot Value. Postweaning performance.

\$GRID—Grid Value. Carcass grid merit, based on Carcass and/or Ultrasound EPDs.

\$BEEF—Beef Value. Combines contributions of \$F and \$G.

\$Values should be used to complement the criteria that producers already use when making selections. For additional information, contact the American Angus Assn., (816) 383-5100, or visit their web site: www.angus.org

SALE SPONSORS



Special thanks to these J&J Sale sponsors:

Farm Credit, Enid, Oklahoma

Fred Slater, (580) 231-0666

Stillwater Milling Company

Rob Bauter, (405) 372-2766



STILLWATER MILLING CO.

(405) 372-2766

(800) 364-1671

Address:

502 East Sixth Street

Stillwater, OK 74074

Thank you for joining us at J&J!



J&J
CATTLE CO.
23001 N. Douglas
Orlando, OK 73073

First Class Mail
TIME-DATED: PLEASE DO NOT DELAY

FIRST CLASS
U.S. POSTAGE
PAID
PERMIT #1541
OKLA. CITY,
OKLAHOMA

LIVE ON THE INTERNET. LIVE AUDIO. VIDEO. BIDDING.
LiveAuctions.TV

www.jandjcattle.com



THIRD ANNUAL PRODUCTION SALE • SATURDAY, MAY 10, 2008