



# J&J CATTLE CO.

SECOND ANNUAL  
*Production Sale*

**Saturday, May 12, 2007**

**12 Noon • At the Ranch**

**Orlando, Oklahoma**

*62 Angus Lots*



Mark & Brenda Johnson, Sydney & Charley  
Ken & June Jackson  
Route 1, Box 8, Orlando, OK 73073  
(405) 880-1902, Cell  
(580) 455-2256, Home & Fax  
info@jandjcattle.com, E-mail  
www.jandjcattle.com, Web site



The Johnson Girls  
welcome you to J&J!

*Dear Friends:*

*We take this opportunity again this year to personally invite you to join us on Saturday, May 12, 2007, for our second annual J&J Production Sale here at the ranch near Orlando, Oklahoma. Preparing for a sale is always exciting as we offer the best of our program for your selection, and we are hopeful you can join us.*

*This sale features the most elite cow families in the Angus breed and a set of females that could serve as the foundation of any herd. We are offering a tremendous set of young, productive cows with spring-born calves and a set heifers that will favorably compare to any you can find. At J&J, we remain committed to our long-term goal of producing cattle that not only read well on paper in regard to breed-leading pedigrees and genetic tabulations but as well represent the visual characteristics of productive, functional cattle with growth, genuine composition and quality.*

*There are many people deserving of thanks for their assistance in getting this sale gathering together. . . . Larue Switzer, Cindy Pribil and Bill Lackey of A-Cross Ranch, for their excellent set of spring pairs, as well as Matt and Eddie Sims, for their expertise in sales management. We have also been fortunate to have an outstanding work force led by Greg Williams. Greg has masterfully balanced being a member of the OSU Livestock Judging Team, a scholarship winning Animal Science student, and taking care of things here at J&J.*

*Thanks to each of you for the time you are taking to look through this catalogue and check out our program. We welcome your visit anytime. The sale cattle are all here near the sale barn and ready for viewing at your convenience.*

Sincerely,  
*Mark*  
Mark Johnson

*Ken*  
Ken Jackson

## *Schedule of Events*

### **Friday, May 11, 2007**

1:00 p.m. until dark — Cattle on display . . . Food and beverages available

6:00 to 9:00 p.m. — Join us for heavy hors d'oeuvres and beverages

### **Saturday, May 12, 2007**

7:30 a.m. — Coffee, juice and pastries

8:00 a.m. — Cattle on display

10:45 a.m. — Lunch served

12:00 noon — Second Annual J&J Cattle Company Production Sale



Real-time bidding will be available via the internet for the J&J Production Sale. Live audio and live video will allow buyers to bid on animals just as if they were present at the auction. Buyers must create an account prior to the sale. Please visit [www.LiveAuctions.tv](http://www.LiveAuctions.tv) to create an account. Follow the instructions there to create your account, or contact Brad Fahrmeier at (816) 392-9241, or e-mail [brad@LiveAuctions.tv](mailto:brad@LiveAuctions.tv)



## Second Annual Production Sale

62 Registered Angus Lots ... Saturday, May 12, 2007 ... Orlando, Oklahoma

### Sale Location

The sale will be held at J&J Cattle Company, located on the south side of State Highway 51, just 1-1/2 miles west of Interstate 35 (Exit 174). Look for our signs and the red barn on top of the hill.

### Motel Accommodations

A block of rooms has been reserved at the Quality Inn (formerly Holiday Inn), Stillwater, 17 miles east of the ranch. Phone (405) 372-0800 by Friday, May 4, to secure a room in your name. Please mention that you are attending the J&J sale to receive the special rate. After May 4, rooms will be available on a first-come, first-served basis.

#### Other motels in the area:

Best Western/Cherokee Strip Motel, Perry, Oklahoma,  
(580) 336-2218 (16 miles north).

### Air Transportation

Will Rogers World Airport in Oklahoma City is 45 minutes from the ranch and is served by most major airlines. For assistance with travel arrangements, please call Brenda Johnson, (405) 880-5887.

### Special Sale Guests

Scott Dewald, Exec. Vice President, Oklahoma Cattlemen's Assn.  
Jot Hartley, President, American Angus Assn.  
Jarold Callahan, Director, American Angus Assn.  
Alan Armbruster, President, Oklahoma Angus Assn.  
Chuck Stewart, Vice President, Oklahoma Angus Assn.  
Dr. Robert Whitson, Vice President, Dean and Director,  
OSU College of Agricultural Sciences and Natural Resources  
Dr. Robert Totusek, Head Emeritus,  
OSU Department of Animal Science  
Dr. Donald Wagner, Head, OSU Department of Animal Science  
Jeff Mafi, Manager, OSU Purebred Beef Herd

### Sale Staff

Eddie C. Sims, Auctioneer, (580) 595-1626  
Matt Caldwell, Angus Journal, (785) 228-1364  
A.J. Smith, Oklahoma Cowman, (405) 235-4391  
Doug Paul, The Stock Exchange, (405) 820-3982  
John Andras, Weekly Livestock Reporter, (817) 789-7352  
Juston Stelzer, The Cattleman, (817) 992-7059

### Sale Consultant

Cindy Pribil, (405) 853-5232

### Sale Managers

**MCS AUCTION**  
AND SPECIALIZED MARKETING  
Matt C. Sims Ph: (405) 348-3955  
1701 NW 183rd St. Fax: (405) 348-7090  
Edmond, OK 73003 Cell: (405) 641-6081  
E-mail: mattcsims@aol.com

**NATIONAL CATTLE SERVICES INC.**  
P.O. Box 170, Elgin, OK 73538  
(580) 492-4590 • Fax 492-4594  
simsnsc@aol.com  
www.nationalcattle.com

### Absentee Bids

If you would like to place a bid on any lot but will not be able to be with us sale day, you may join us online at [www.LiveAuctions.tv](http://www.LiveAuctions.tv). You may also direct your phone bid to the ranch, the sale manager, sale consultant, or any other member of the sale staff, listed above.

### Livestock Transportation

Livestock haulers believed to be reliable will be available to assist you in shipping your purchases. We recommend that insurance be obtained on lots purchased, which will be available at the clerk's desk.

### Sale Terms and Conditions

Cattle will sell under Suggested Terms and Conditions of the American Angus Association, listed on page 2.

### Herd Health

All cattle will be accompanied by proper health certificates for immediate interstate shipment. All calves are wormed and vaccinated with a 7-way Clostridial, 4-way for BVD, IBR, PI3 and BRSV, and Pasteurella Bacterin Toxoid by three months of age and again at weaning. All females of age are officially calthood vaccinated. Yearling heifers and the cow herd are wormed and vaccinated twice annually with a 7-way Clostridial, 4-way for BVD, IBR, PI3 and BRSV, and Lepto/Vibrio with Spirovac®. All cattle selling are up to date on vaccinations and worming.

### Breeding Information

The yearling heifers and most of the spring-calving cows will have been bred AI by sale day but are not being sold as safe in calf. An updated breeding/calving report will be available sale day. Announcements made from the auction block will take precedence over all printed material.

### Acknowledgements

Photography—Matt Sims, (405) 641-6081  
Advertising—The Cowboy Connection, (580) 332-7480  
Catalog—Southwest TypeStyles, (405) 222-3089

#### SALE DAY PHONES:

Mark Johnson cell (405) 880-1902

Matt Sims cell (405) 641-6081

Eddie Sims cell (580) 595-1626

#### GUEST CONSIGNOR:

##### A-CROSS RANCH

P. O. Box 765, Elk City, OK 73648

Larue Switzer, owner • Bill Lackey, manager

Cindy Pribil, herd consultant

(405) 853-5232, cell • (405) 853-6544, home



# SALE TERMS & CONDITIONS

**Except for those stated in the below terms and conditions, there are no warranties, either expressed or implied, as to the merchantability or fitness for a particular purpose with respect to the cattle being sold at this auction.**

**The warranties and guarantees set forth in the "Terms and Conditions" are in lieu of all other warranties, either expressed or implied, and the remedies provided therein shall be the sole and exclusive remedy of the buyer, or any party claiming through buyer, for any breach of warranty or guarantee therein provided and all other obligations or liabilities.**

**BIDDING:** Each animal will be sold to the highest bidder. The auctioneer will settle any disputes as to bids, and his decision on such matters shall be final.

**TERMS:** Terms of sale are cash unless satisfactory credit arrangements have been made with vendor previous to sale.

**PURCHASER'S RISK:** Each animal becomes the risk of the purchaser as soon as sold, but it shall be the obligation of the seller to see that animals are fed and cared for free of charge to purchaser until loaded for shipment or until the expiration of (48) hours after the sale, whichever occurs sooner.

**CERTIFICATE OF REGISTRY:** A transferred certificate of registry will be furnished to the purchaser of each animal after full settlement has been made. Calves born before the sale will be registered by the seller; calves born after the sale will be registered by the buyer. Proper breeding statements will be signed by the seller for registering calves born after the sale.

**HERD HEALTH:** All cattle will be accompanied by proper health certificates for immediate interstate shipment. All calves are wormed and vaccinated with a 7-way Clostridial, 4-way for BVD, IBR, PI3 and BRSV, and Pasteurella Bacterin Toxoid by three months of age and again at weaning. All females of age are officially calffood vaccinated. Yearling heifers and the cow herd are wormed and vaccinated twice annually with a 7-way Clostridial, 4-way for BVD, IBR, PI3 and BRSV, and Lepto/Vibrio with Spirovac®. All cattle selling are up to date on vaccinations and worming.

**ANNOUNCEMENTS:** Any changes from information of any kind in the catalog will be announced from the auction box, and such announcements shall take precedence.

**EXPECTED PROGENY DIFFERENCES (EPDs):** The EPDs stated in the catalog were current at press time. However, we cannot guarantee that an animal's EPDs will be the same as listed herein, as they are constantly being updated.

#### **BREEDING GUARANTEE:**

1. All animals are guaranteed to be breeders with the exception of a) Calves under twelve (12) months of age; b) In the event of any injury or disease that occurs to the animal after sale; c) Gross negligence or willful misconduct on the part of the purchaser; or, d) Females used in embryo transplant.
2. Females sold as "safe in calf" have been examined by a competent veterinarian or other reproductive technician and are so guaranteed to be with calf and thus are considered breeders without further guarantee.
3. The yearling heifers and most of the spring-calving cows will have been bred A.I. by sale day but are not being sold as safe in calf. All fall-calving cows are being sold safe in calf. An updated breeding/calving report will be available sale day. Announcements made from the auction block will take precedence over all printed material.

4. Cows with calves at side are presumed to be breeders with no further fertility guarantee.

5. Any guarantee with respect to embryo transplant production shall be a separate agreement between buyer and seller.

6. Animals resold following purchase in this sale shall constitute a separate transaction, and the rights and obligations of the two parties connected thereto are not covered by the terms and conditions of this sale.

#### **IDENTIFICATION:**

1. Seller offers each animal with a readable tattoo corresponding to its registration.
2. Buyer agrees to check tattoos for accuracy.
3. In those cases where a nickname is used, it shall be accompanied by the official registered name and number of the animal.

#### **OPTIONS AND PRIVILEGES OF RETURN OR ADJUSTMENT:**

1. All claims for adjustments or refunds must be made in writing either within six (6) months of the date of the sale or no later than 6 months after the animal reaches eighteen (18) months of age, whichever occurs latter.
2. In the event that an animal is claimed to be a non-breeder, that animal must be returned to J&J Cattle Company in good condition and must have met the health requirements of the State of Oklahoma. The seller shall be entitled to 6 months trial following the return of the animal in which to prove that the animal is a breeder. If at the end of 6 months the seller has been unable to prove the animal as a breeder, the seller shall, at the option of the buyer, replace the animal with another of equal value or refund the total purchase price. The return of the purchase price shall in all cases be deemed as full settlement. Any expense incurred in transporting the animal that is claimed to be a non-breeder shall be the responsibility of the purchaser. If the seller proves the animal to be a breeder, it shall be the obligation of the purchaser to take delivery of the animal and pay all expenses incurred for transportation. The return of an animal at the expense of the purchaser with a refund of the purchase price made by the seller is in all cases considered to be a complete settlement.

#### **RIGHTS AND OBLIGATIONS:**

1. The above terms and conditions of sale shall constitute a contract between the buyer and seller of each animal and shall be equally binding upon both. Each sale or resale of an animal constitutes a separate transaction.
2. All persons who attend the sale do so at their own risk. Neither J&J Cattle Co., the sale managers nor any other person connected with the sale assumes liability, legal or otherwise, for accidents or loss of property.

## Catalog Abbreviations

#### **PRODUCTION EPDs:**

**BW EPD**—Birth Weight, expressed in pounds.

**WW EPD**—Weaning Weight Direct, expressed in pounds.

**YW EPD**—Yearling Weight, expressed in pounds.

**SC EPD**—Scrotal Circumference, expressed in centimeters.

**Milk EPD**—Weaning Weight Maternal, expressed in pounds, is a predictor of an animal's genetic merit for milk and mothering ability. In other words, it is that part of weaning weight attributed to milk and mothering ability.

#### **ULTRASOUND EPDs:**

Derived from real time ultrasound scanning measurements processed through Centralized Ultrasound Processing (CUP).

**%IMF EPD**—Intramuscular Fat is a predictor of the difference in an animal's progeny for percent intramuscular fat in the ribeye muscle.

**UREA EPD**—Ribeye Area is a predictor of the differences in square inches of ribeye area of an animal's progeny.

**\$VALUE INDEXES:** Expressed in dollars per head, \$Values are multi-trait selection indexes to assist commercial beef producers by adding simplicity to genetic selection decisions.

**\$WEAN**—Weaned Calf Value. Prewaning merit, based on both revenue and cost adjustments for birth weight, weaning weight, milk and mature cow size.

**\$FEEDLOT**—Feedlot Value. Postweaning performance.

**\$GRID**—Grid Value. Carcass grid merit, based on Carcass and/or Ultrasound EPDs.

**\$BEEF**—Beef Value. Combines contributions of \$F and \$G.

\$Values should be used to complement the criteria that producers already use when making selections. For additional information, contact the American Angus Assn., (816) 383-5100, or visit their web site: [www.angus.org](http://www.angus.org)





**Schurrtop  
MC 2500 —  
Reference  
Sire A**

## A SCHURRTOP MC 2500

**Calved: 2/13/2004 • Bull: 14840227**

Schurrtop MC  
13980842

#Papa Equator 2928  
Schurrtop 1483 9024

#+Papa Power 096  
#Papa Envious Blackbird 8849  
#RR 9440 Scotch Cap 1483  
Schurrtop 705Y 7027

Schurrtop RS 1413 2153  
13159817 Ryans Schurrtop 2125

Brooks Schurr Trend

#VDAR New Trend 315  
Duke Girl 8310 HWB  
Schurrtop Hi Gain  
Valedictorian KG 21

BW EPD	WW EPD	YW EPD	SC EPD	MILK EPD	%IMF EPD	UREA EPD
+4.3	+43	+94	+56	+19	+04	+68

AI sire.

\$WEAN	\$FEEDLOT	\$GRID	\$BEEF
+16.42	+37.53	+17.08	+44.50

## B STEVENSON BENCHMARK N190

**Calved: 1/17/2003 • Bull: 14368434**

CA Future Direction 5321  
#12493607

#GAR Precision 1680  
CA Miss Power Fix 308

#Tehama Bando 155  
9J9 GAR 856  
#+SAF Power Fix  
CA Lady Eight 1015

Stevenson Elga L706  
13801166

+Stevenson Comstock 345J  
+Stevenson Elga 644G

#Krugerrand of Donamere 490  
#Ahlgrens Estella 2758 ETE  
#Stevenson Fortune 425C  
JRS Elga 495W

BW EPD	WW EPD	YW EPD	SC EPD	MILK EPD	%IMF EPD	UREA EPD
+1.5	+30	+66	+10	+28	+86	+35

AI sire.

\$WEAN	\$FEEDLOT	\$GRID	\$BEEF
+22.80	+13.90	+30.11	+41.70

## C BR MIDLAND

**Calved: 12/30/2000 • Bull: 13898124**

Twin Valley Precision E161  
#12346200

#GAR Precision 1680  
+WCC Blackcap C9

#Tehama Bando 155  
9J9 GAR 856  
#SS Traveler 6T6  
Premier Blackcap 6276A

BR Royal Lass 7036-19  
13253905

#+SAF Neutron  
#SAF Royal Lass 7036

#VDAR New Trend 315  
SAF Duchess 9029  
#+SVF Hi Road  
+SAF Royal Lass 4031

BW EPD	WW EPD	YW EPD	SC EPD	MILK EPD	%IMF EPD	UREA EPD
+1.6	+46	+85	+13	+12	+75	+52

AI sire.

\$WEAN	\$FEEDLOT	\$GRID	\$BEEF
+22.94	+26.88	+27.40	+48.75

## D J&J DOUBLE TAKE 550

**Calved: 3/02/2005 • Bull: +15132206**

EXAR New Look 2971  
+14230122

#Bon View New Design 1407  
N Bar Primrose 2424

#B/R New Design 036  
Bon View Pride 664  
#Emulation 31  
Primrose N Bar 9962

PF E161 Bardolena 3153  
+14428533

#Twin Valley Precision E161  
GK Betsy Bardolena 323A

#GAR Precision 1680  
+WCC Blackcap C9  
Bardolene of Peak Dot 204R  
SPA Primeline Princess C401

BW EPD	WW EPD	YW EPD	SC EPD	MILK EPD	%IMF EPD	UREA EPD
+3.2	+48	+90	+41	+23	+19	+54

High selling lot in our 2006 sale.  
His first calves sell.

\$WEAN	\$FEEDLOT	\$GRID	\$BEEF
+24.32	+31.27	+17.51	+42.83

## E J&J SUDDEN IMPACT 5118

**Calved: 3/12/2005 • Bull: +15132214**

EXAR Sudden Impact 1537  
13806056

#+Northern Improvement 4480 GF  
+BLR Blushing Pride 9097

#TC Stockman 365  
Blackcap of RR 5367  
#GDAR Traveler 71  
+Blushing Pride of OSU

EXAR Eriskay Q38 0441  
+13554882

#Bon View New Design 1407  
+VT Traveler 6807 Q38

#B/R New Design 036  
Bon View Pride 664  
#DHD Traveler 6807  
Eriskay of Rollin Rock 5202

BW EPD	WW EPD	YW EPD	SC EPD	MILK EPD	%IMF EPD	UREA EPD
+1.6	+46	+87	+53	+29	+20	+27

His first calves sell.

\$WEAN	\$FEEDLOT	\$GRID	\$BEEF
+28.25	+28.95	+14.85	+38.99

## F J&J MIDLAND 5111

**Calved: 3/03/2005 • Bull: +15132194**

BR Midland  
13898124

#Twin Valley Precision E161  
BR Royal Lass 7036-19

#GAR Precision 1680  
+WCC Blackcap C9  
#+SAF Neutron  
#SAF Royal Lass 7036

J&J 1531 Blackcap 240  
+14351379

#Rockn D Ambush 1531  
+Leachman Blackcap 8261

#Paramont Ambush 2172  
Ms Blackcap Band of RD 1301  
#Connealy Dateline  
Leachman Blackcap 4010

BW EPD	WW EPD	YW EPD	SC EPD	MILK EPD	%IMF EPD	UREA EPD
			+20		+31	+62

A flush sister was the second high  
selling yearling heifer in our 2006  
sale.

\$WEAN	\$FEEDLOT	\$GRID	\$BEEF

## G OSU PRECISION 5105

**Calved: 1/01/2005 • Bull: +15045032**

Twin Valley Precision E161  
#12346200

#GAR Precision 1680  
+WCC Blackcap C9

#Tehama Bando 155  
9J9 GAR 856  
#SS Traveler 6T6  
Premier Blackcap 6276A

OSU Jilt 7143  
#12843928

#+Krugerrands Moneyline  
OSU 6807 Jilt 5133

#Krugerrand of Donamere 490  
Ankony 5G00 Blackbird GC017  
#DHD Traveler 6807  
#OSU 869B Jilt 130C

BW EPD	WW EPD	YW EPD	SC EPD	MILK EPD	%IMF EPD	UREA EPD
+1.8	+37	+81	-09	+18	+19	+54

Owned by A-Cross Ranch.

\$WEAN	\$FEEDLOT	\$GRID	\$BEEF
+19.56	+26.35	+19.94	+41.10

# J&J SALE FEATURES



## J&J RITA 663

Calved: 8/29/2006 • Cow: +15632801 • Tattoo: 663

BR Midland  
13898124

#Twin Valley Precision E161  
BR Royal Lass 7036-19

#GAR Precision 1680  
+WCC Blackcap C9  
#+SAF Neutron  
#SAF Royal Lass 7036

GAR Precision 492  
+14222274

#GAR Precision 1680  
GAR Prime Time 2409

#Tehama Bando 155  
9J9 GAR 856  
#Gardens Prime Time  
+GAR EXT 327

BW EPD	WW EPD	YW EPD	SC EPD	MILK EPD	%IMF EPD	UREA EPD
I +0.4	I +39	I +79		I +21	I +.74	I +.48

- Selling one-half interest with the right to double and take all.

\$WEAN	\$FEEDLOT	\$GRID	\$BEEF
+25.12	+23.50	+26.49	+44.83

J&J reserves the right to one future flush or four pregnancies, at our expense, if the buyer takes all. Sells open.

## *Elite marbling genetics!*

This big ribbed, thick topped, structurally correct descendant of Rita 5H11 represents the breed's leading cow family for IMF genetics! Rita 663's dam, GAR Precision 492, is the highest selling female in the history of EXAR, where she was purchased by James Ruble for \$250,000 in the 2005 "Big Event" sale. Her maternal grandam, GAR Prime Time 2409, has amassed over \$2.5 million in progeny sales. Her sire, BR Midland, is an established source of additive genetic merit for carcass excellence and currently records the fourth highest IMF EPD among proven sires. Rita 663 offers a unique combination of outstanding phenotype, powerful genetic tabulation and a royal pedigree which is an outcross to the New Design 036 bloodline.

Marbling genetics will become even more valuable in the future as demand increases for cattle with the genetic potential to yield high quality beef with less feed input. Rita 663 is right for the times and poised for the future... a big time cow in the making with unlimited earning potential!



GAR Precision 492 —  
Dam of Lot 1



GAR Prime Time 2409 —  
Maternal grandam of Lot 1

# Buyer's choice

**GAR Precision 1680 x Blackcap 0035  
flush sisters**



**2A**



**GAR Precision 2536 — Full sister in blood to Lots 2A–2B**



**A Plus Blackcap 0035 — Donor dam of Lots 2A–2B**



**2B**

## 2A J&J BLACKGOLD BLACKCAP 6174

Calved: 11/05/2006 • Cow: +15632739 • Tattoo: 6174

GAR Precision 1680  
#11520398  
#Tehama Bando 155  
9J9 GAR 856  
A Plus Blackcap 0035  
#13651639  
#N Bar Emulation EXT  
#GAR Scotch Cap 867

#Band 234 of Ideal 3163  
Tehama Blackcap G373  
#Rito 9J9 of B156 7T26  
Blackbird GAR 833  
#Emulation N Bar 5522  
N Bar Primrose 2424  
#Scotch Cap  
Blackcap GAR 51

BW EPD	WW EPD	YW EPD	SC EPD	MILK EPD	%IMF EPD	UREA EPD
1 +2.2	1 +35	1 +72	1 -39	1 +23	1 +.33	1 +.42

• Offering choice between 6174 and 6175. Buyer has the right to make selection after yearling ultrasound data has been collected. Sell open.

\$WEAN	\$FEEDLOT	\$GRID	\$BEEF
+22.32	+17.97	+22.57	+43.19

## 2B J&J BLACKGOLD BLACKCAP 6175

Calved: 12/17/2006 • Cow: +15632740 • Tattoo: 6175

Selling buyer's choice of these two full sisters in blood to breed icon GAR Precision 2536—the highest income producing and highest \$B female in the breed. These two females have been favorites of many visitors over the past months. 6174 and 6175 are produced by the \$100,000-valued A Plus Blackcap 0035, who is a full sister to breed legend GAR EXT 2104, the dam of 2536. 0035 is a powerful cow who records even stronger IMF and REA EPDs than 2104.

GAR Precision 2536 is without question the most popular and influential cow in the Angus breed today. She is the immortal producer of breed-leading sires such as 111, 112, 2V1 and 2 878, to name a few. Many of today's AI semen directories look like a "Who's Who" among 2536 sons!

These young females have a tremendous future and represent breed-leading genetics and long-term earning potential! Co-owned with John Freeman.

## Heifer calf pregnancy



**3**  
Donor

EXAR Blackbird 5001, sired by Rito 112, is the highest \$B female in the J&J breeding program. She calved in January, has a beautiful udder and is doing an outstanding job with her first calf. 5001's dam, ACF Blackbird 0308, a powerful and proven cow, is considered by many as the best daughter of Davis YR Blackbird 558H, the record-selling female and long-time breed leader for carcass traits. Blackbird 5001's high \$Beef sire, Rito 112, produced by the full sister in blood to the heifers selling as Lot 2, is a proven source of high IMF genetics and has earned a considerable reputation as a sire of functional females with udder quality, depth of flank and structural soundness.

Given the proven popularity of the Blackbird cow family coupled with 112 semen being in limited supply, Lot 3 represents a unique opportunity. Co-owned with McLemore Farms.

### Donor dam

## 3 EXAR BLACKBIRD 5001

Calved: 1/01/2005 • Cow: +14984114 • Tattoo: 5001

Rito 112 of 2536 Rito 616  
+13793826

#Rito 616 of 4B20 6807  
GAR Precision 2536

#DHD Traveler 6807  
+Rita 4B20 of 0FB1 Bando  
#GAR Precision 1680  
+GAR EXT 2104

ACF Blackbird 0308  
+13814642

#B/R New Design 036  
Davis YR Blackbird 558H

#VDAR New Trend 315  
B/R Blackcap Empress 76  
#GAR Precision 1680  
GAR Traveler 760

BW EPD	WW EPD	YW EPD	SC EPD	MILK EPD	%IMF EPD	UREA EPD
+2.6	+53	+94	+03	+30	+51	+46

\$WEAN	\$FEEDLOT	\$GRID	\$BEEF
+29.42	+33.44	+28.33	+55.12

• Selling a guaranteed heifer calf pregnancy due in the spring of 2008 from the mating of the buyer's choice of three sires.

## 3A BASIN FRANCHISE P142

Calved: 2/17/2004 • Bull: 14686137 • Tattoo: P142

CA Future Direction 5321  
#12493607

#GAR Precision 1680  
CA Miss Power Fix 308

#Tehama Bando 155  
9J9 GAR 856  
#+SAF Power Fix  
CA Lady Eight 1015

Basin Chloe 812L  
13850607

Gardens Expedition  
Basin Chloe 6198

#N Bar Emulation EXT  
Green Garden Gina 2268 S2  
#Basin Ambush 3905  
Basin Chloe 938F

BW EPD	WW EPD	YW EPD	SC EPD	MILK EPD	%IMF EPD	UREA EPD
+0.2	+43	+91	+12	+25	+99	+78

\$WEAN	\$FEEDLOT	\$GRID	\$BEEF
+25.82	+34.36	+33.53	+59.17



ACF Blackbird 0308 — Dam of Lot 3 donor



Davis YR Blackbird 558H — Grandam of Lot 3 donor

## 3B EXAR NEW LOOK 2971

Calved: 8/12/2002 • Bull: +14230122 • Tattoo: 2971

Bon View New Design 1407  
#12783540

#B/R New Design 036  
Bon View Pride 664

N Bar Primrose 2424  
10474919

#Emulation 31  
Primrose N Bar 9962

#VDAR New Trend 315  
B/R Blackcap Empress 76  
#+GAR Sleep Easy 1009  
#Bon View Pride 1551

FCR Elation Lad 652  
Miss Emulous 243  
Lad 118K of JRS  
N Bar Primrose 5329

BW EPD	WW EPD	YW EPD	SC EPD	MILK EPD	%IMF EPD	UREA EPD
+2.9	+49	+94	+43	+28	+13	+76

\$WEAN	\$FEEDLOT	\$GRID	\$BEEF
+26.25	+35.07	+18.40	+45.13

## 3C BON VIEW NEW DESIGN 1407

Calved: 2/23/1997 • Bull: #12783540 • Tattoo: 1407

B/R New Design 036  
#11418151

#VDAR New Trend 315  
B/R Blackcap Empress 76

Bon View Pride 664  
12139985

#+GAR Sleep Easy 1009  
#Bon View Pride 1551

#AAR New Trend  
#VDAR Lucy 704  
#K&K Top Gun  
+QLC A70 Blkcp Empress E43T

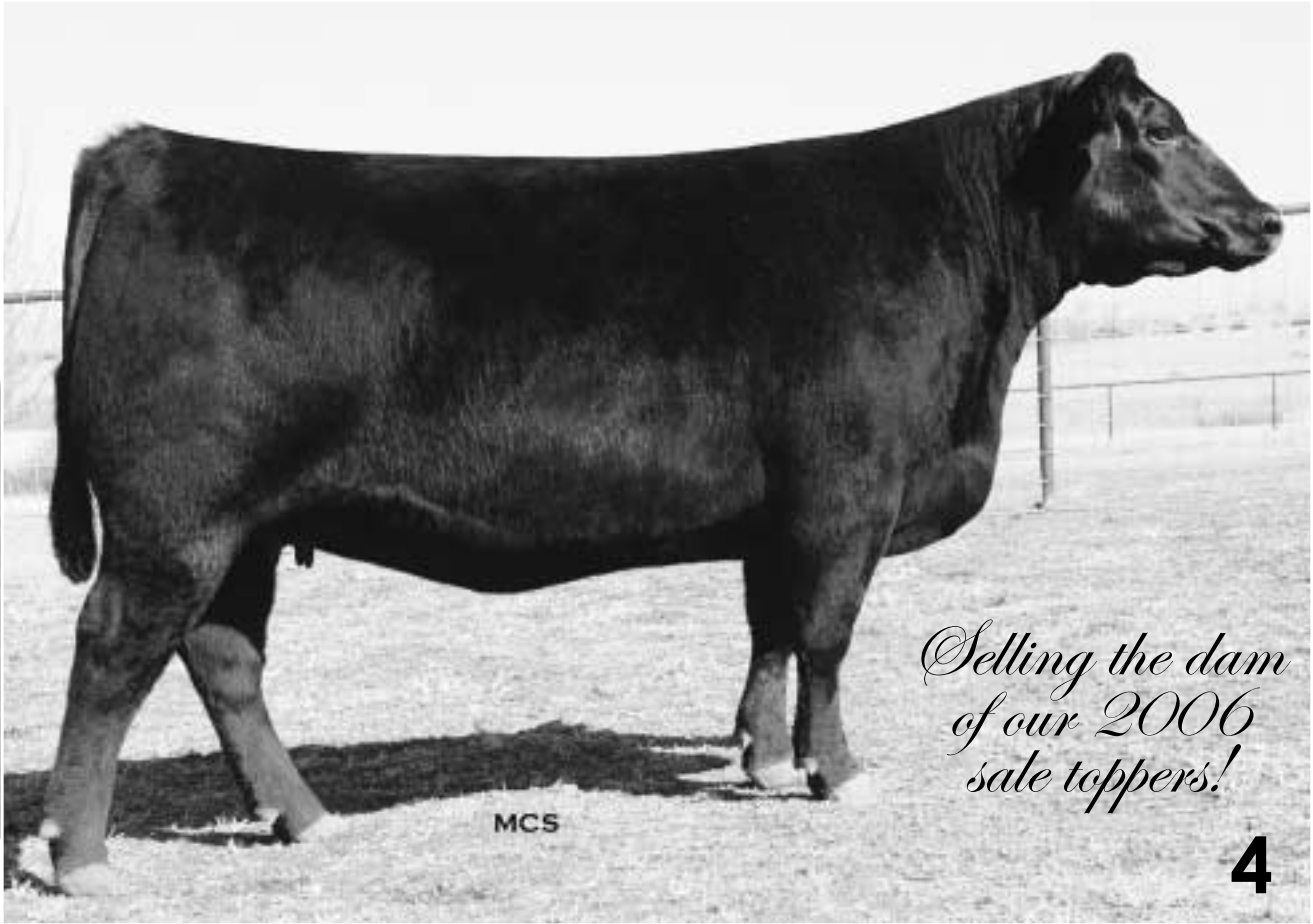
#Tehama Bando 155  
Blacklass GAR 103  
Bon View Paragon 2108  
Bon View Pride 639

BW EPD	WW EPD	YW EPD	SC EPD	MILK EPD	%IMF EPD	UREA EPD
+0.0	+44	+90	+10	+34	+55	+45

\$WEAN	\$FEEDLOT	\$GRID	\$BEEF
+32.05	+32.90	+27.43	+48.55



# BARDOLENA FAMILY



*Selling the dam  
of our 2006  
sale toppers!*

**4**

## **4** PF E161 BARDOLENA 3153

**Calved: 3/04/2003 • Cow: +14428533 • Tattoo: 3153**

#GAR Precision 1680	#Tehama Bando 155
#12346200	9J9 GAR 856
Twin Valley Precision E161	#SS Traveler 6T6
+WCC Blackcap C9	Premier Blackcap 6276A
Bardolene of Peak Dot 204R	Bardolene of Peak Dot 134N
GK Betsy Bardolena 323A	Quill Plains Pride 26L
11641382	#PS Power Play
SPA Primeline Princess C401	#VDAR Bessie 675

BW EPD	WW EPD	YW EPD	SC EPD	MILK EPD	%IMF EPD	UREA EPD
+3.4	+46	+85	+38	+17	+25	+31

\$WEAN	\$FEEDLOT	\$GRID	\$BEEF
+21.64	+26.88	+16.28	+38.49

Co-owned with A-Cross Ranch.  
• Will calve in May to  
J&J SUDDEN IMPACT 5118.

Bardolena 3153 has set high standards at J&J since her arrival from Pollard Farms, where we purchased her as a calf. As a yearling heifer, she was flushed to EXAR New Look; four calves produced from this mating were sold for an average of \$14,062 in our first sale last year. These included J&J Double Take 550, our high selling lot in 2006 to A-Cross Ranch, and J&J Bardolena 543, our high selling female in 2006 to the partnership of 74-51 and R3.

Visually, 3153 is as powerful an Angus female as you will find, offering tremendous base width, rib shape, muscle thickness and bone. From a production and records standpoint, she has performed well in every aspect, posting a 108 weaning weight ratio on her first natural calf while her first 10 yearling offspring evaluated by ultrasound record average ratios of 105 for IMF and 102 for REA. She combines a positive scrotal EPD of +.38 with moderate birth and WW and YW predictors in the best 10% of current Angus dams.

3153 presents a tremendous variety of mating options. She combines genetic superiority for growth and carcass traits with the power and look to produce show cattle—all with an outcross pedigree to the New Design 036 line of cattle! A true genetic treasure who is just reaching her prime.



**J&J Double  
Take 550 —  
This son of  
Lot 4 was  
the high  
seller in our  
2006 sale**



**J&J  
Bardolena  
543 —  
High selling  
female in  
our 2006  
sale, out of  
Lot 4**



EXAR Blackbird 2432 — Full sister to Lot 5

## 5 J&J 1407 BLACKBIRD 426

Calved: 2/14/2004 • Cow: +14694471 • Tattoo: 426

#B/R New Design 036 #VDAR New Trend 315  
**Bon View New Design 1407** B/R Blackcap Empress 76  
 #12783540 Bon View Pride 664 #+GAR Sleep Easy 1009  
 #Bon View Pride 1551  
 #N Bar Emulation EXT #Emulation N Bar 5522  
**PAF Blackbird 6665** N Bar Primrose 2424  
 12829409 PAF Blackbird 4170 #Tehama Bando 155  
 PAF Lady Cap 2028

BW EPD	WW EPD	YW EPD	SC EPD	MILK EPD	%IMF EPD	UREA EPD
+0.6	+37	+78	1-.32	+20	1+.29	1+.18

\$WEAN	\$FEEDLOT	\$GRID	\$BEEF
+23.35	+23.27	+20.33	+36.89

J&J Blackbird 426 descends from one of the foundation donor cows at J&J. Produced by a superb EXT daughter bred at Pfeiffer Farms, the now-deceased PAF Blackbird 6665, Blackbird 426 is a maternal sister to several past sale features in EXAR "Big Event" sales. Three maternal sibs to 426 featured in the 2006 J&J sale sold for an average value of \$7,800. Blackbird 426 is a big volumed, structurally sound female with an outstanding heifer calf at side sired by MC 2500. Ranks in the breed's best 5% of active dams for IMF.

**5A** Heifer calf born 2/03/2007, tattoo 724, by SCHURRTOP MC 2500. BW 89 lbs.



Real-time bidding will be available via the internet for the J&J Production Sale. Live audio and live video will allow buyers to bid on animals just as if they were present at the auction. Buyers must create an account prior to the sale. Please visit [www.LiveAuctions.tv](http://www.LiveAuctions.tv) to create an account. Follow the instructions there to create your account, or contact Brad Fahrmeier at (816) 392-9241, or e-mail [brad@LiveAuctions.tv](mailto:brad@LiveAuctions.tv)

# QUEENIE 9206 DAUGHTER



## 6 J&J QUEEN 414

Calved: 1/29/2004 • Cow: +14694435 • Tattoo: 414

Northern Improvement 4480 GF  
# +13054003 Blackcap of RR 5367

#TC Stockman  
TC Pride 0014  
RR Vantage 3352  
Blackcap of RR 0238

J&J Queenie 9206  
# +A&B Yukon 7150  
+13412890 C&C Queen 418

#Krugerrand of Donamere 490  
+A&B Queen 4173  
Bando of Conanga 573  
WK Queen 2147

BW EPD	WW EPD	YW EPD	SC EPD	MILK EPD	%IMF EPD	UREA EPD
+2.2	+43	+85	+0.40	+14	-.09	-.34

J&J Queen 414 has been a favorite since birth. Evaluated by most ranch visitors as the best phenotype cow at J&J and proclaimed by many as the best daughter ever sired by Northern Improvement, **this is a female made for those who enjoy looking at cows.** 414 is the first of several outstanding daughters of J&J Queenie 9206 featured in this sale. This low birth female combines flawless phenotype with an interim Scrotal EPD of +.40 and a Yearling EPD in the best 10% of current dams.

\$WEAN	\$FEEDLOT	\$GRID	\$BEEF
+21.29	+28.08	+5.12	+27.89

If you are searching for an Angus female to complement the bull of your choice with "look," quality, soundness and power, check out 414 and her spring 2007 ET calves sired by MC 2500 and Papa Equator 2928! 414 produced 17 total embryos in two flushes last spring. Co-owned with Carl Johnson and Chuck Meadows.

- Selling the buyer's right to flush 414 to the sire of his/her choice. Buyer is guaranteed a minimum of six Grade 1 embryos and will receive all embryos produced from the flush for the purchase price. 414 will be ready to flush after she calves in late May to Double Take.

*Right to flush*



Northern Improvement — Sire of Lot 6 flush donor and Lot 7

## QUEENIE 9206 DAUGHTERS



### 7 J&J QUEEN 6103

Calved: 3/05/2006 • Cow: +15507109 • Tattoo: 6103

Northern Improvement 4480 GF  
#13054003 Blackcap of RR 5367

#TC Stockman  
TC Pride 0014  
RR Vantage 3352  
Blackcap of RR 0238

J&J Queenie 9206  
+13412890 C&C Queen 418

#Krugerand of Donamere 490  
+A&B Queen 4173  
Bando of Conanga 573  
WK Queen 2147

BW EPD	WW EPD	YW EPD	SC EPD	MILK EPD	%IMF EPD	UREA EPD
1+2.1	1+45	1+87	1+.40	1+17	1-.04	1-1.9

Stylish with an extremely correct structural base and a big, square hip, 6103 has tremendous hair and quality. She is a full sister to the female featured as Lot 6. Another full sister was the high selling fall born heifer of our 2006 sale to Platinum Land & Cattle. A fancy show heifer and cow prospect!

- Breeding information available sale day.

### 8 J&J QUEEN 606

Calved: 1/30/2006 • Cow: +15507092 • Tattoo: 606

EXAR Lutton 1831  
14035047 EXAR Saras Dream 9809

#TC Stockman 365  
Blackcap of RR 5367  
#+A&B Yukon 7150  
+Saras Dream

J&J Queenie 9206  
+13412890 C&C Queen 418

#Krugerand of Donamere 490  
+A&B Queen 4173  
Bando of Conanga 573  
WK Queen 2147

BW EPD	WW EPD	YW EPD	SC EPD	MILK EPD	%IMF EPD	UREA EPD
1+3.5	1+54	1+101	1-.04	1+18	1+.11	1-.26

Great pattern with bone and length of front, 606 is the largest framed of the 9206 yearling daughters. This heifer has great hair, records a YW EPD in the best 2% of non-parent females and earned a yearling IMF ratio of 102. Super show prospect!

- Breeding information available sale day.

### 9 J&J QUEEN 6121

Calved: 3/11/2006 • Cow: +15507107 • Tattoo: 6121

BC Marathon 7022  
14187839 Gibbet Hill Mignonne E37

#OCC Emblazon 854E  
+OCC Blackbird 785H  
#Papa Equator 2928  
Gibbet Hill Mignonne TR 29

J&J Queenie 9206  
+13412890 C&C Queen 418

#Krugerand of Donamere 490  
+A&B Queen 4173  
Bando of Conanga 573  
WK Queen 2147

BW EPD	WW EPD	YW EPD	SC EPD	MILK EPD	%IMF EPD	UREA EPD
1+4.0	1+56	1+99	1+.15	1+13	1-.02	1+.38

The heaviest muscled, thickest topped, stoutest hipped yearling heifer in the sale. A flush sister to this heifer sells as Lot 16. 6121 has tremendous base width, bone and hind leg structure. She earned a yearling REA ratio of 115 and ranks in the best 3% of non-parent Angus females for YW EPD. The sire of this female, BC Marathon, is rapidly becoming one of the breed's most popular AI sires. This female offers a wide variety of mating options.

- Breeding information available sale day.





# QUEENIE 9206 DAUGHTERS



*Elite show and donor prospects!*

**10**

MCS

**10**

## J&J QUEEN 668

Calved: 10/16/2006 • Cow: +15632795 • Tattoo: 668

BW EPD	WW EPD	YW EPD	SC EPD	MILK EPD	%IMF EPD	UREA EPD
1 +4.6	1 +48	1 +99	1 +38	1 +13	1 -.02	1 +.13

• Sells open.

\$WEAN	\$FEEDLOT	\$GRID	\$BEEF
+15.61	+40.80	+8.03	+37.53

**11**

## J&J QUEEN 671

Calved: 10/20/2006 • Cow: +15632796 • Tattoo: 671

BW EPD	WW EPD	YW EPD	SC EPD	MILK EPD	%IMF EPD	UREA EPD
1 +4.6	1 +48	1 +99	1 +38	1 +13	1 -.02	1 +.13

• Sells open.

\$WEAN	\$FEEDLOT	\$GRID	\$BEEF
+15.61	+40.80	+8.03	+37.53



**11**

MCS

**12**

## J&J QUEEN 646

Calved: 3/17/2006 • Cow: +15507093 • Tattoo: 646

BW EPD	WW EPD	YW EPD	SC EPD	MILK EPD	%IMF EPD	UREA EPD
1 +4.6	1 +48	1 +99	1 +38	1 +13	1 +.04	1 +.11

• Breeding information available sale day.

\$WEAN	\$FEEDLOT	\$GRID	\$BEEF
+15.61	+40.80	+10.11	+39.60

### Lots 10, 11 and 12:

Schurrtop MC  
Schurrtop MC 2500  
14840227

Schurrtop RS 1413 2153

#+A&B Yukon 7150

J&J Queenie 9206  
+13412890

C&C Queen 418

#Papa Equator 2928  
Schurrtop 1483 9024  
Brooks Schurr Trend  
Ryans Schurrtop 2125  
#Krugerrand of Donamere 490  
+A&B Queen 4173  
Bando of Conanga 573  
WK Queen 2147

These three sisters by MC 2500 and out of Queenie 9206 have tremendous potential. The two October-born senior heifer calves selling lots 10 and 11 are still a little green but have the length of neck, pattern and quality to develop into heifers that can compete at any level. The Lot 10 heifer has been a favorite of many visitors over the past few months.



13

## 13 J&J QUEEN 603

Calved: 1/27/2006 • Cow: +15507086 • Tattoo: 603

BW EPD	WW EPD	YW EPD	SC EPD	MILK EPD	%IMF EPD	UREA EPD
I +3.3	I +49	I +95	I +.17	I +10	I +.36	I +.05

Stout with tremendous rib and capacity, 603 is a power cow in the making. While she should show quite well, her greatest value is likely as a donor. She earned a ratio of 107 for yearling IMF and ranks, along with her flush sisters, in the best 5% of non-parent females for YW EPD.

- Breeding information available sale day.

\$WEAN	\$FEEDLOT	\$GRID	\$BEEF
+18.78	+36.13	+16.87	+43.66



14

## 14 J&J QUEEN 610

Calved: 2/03/2006 • Cow: +15507089 • Tattoo: 610

BW EPD	WW EPD	YW EPD	SC EPD	MILK EPD	%IMF EPD	UREA EPD
I +3.3	I +49	I +95	I +.17	I +10	I +.34	I +.29

Productively designed with a look of function, Queen 610 combines soundness and rib with a YW EPD in the best 5% of non-parent females. IMF ratio 103, REA ratio 120.

- Breeding information available sale day.

\$WEAN	\$FEEDLOT	\$GRID	\$BEEF
+18.78	+36.13	+17.81	+44.61

### Lots 13, 14 and 15:

#Twin Valley Precision E161	#GAR Precision 1680
BR Midland 13898124	+WCC Blackcap C9
BR Royal Lass 7036-19	#+SAF Neutron
	#SAF Royal Lass 7036
#+A&B Yukon 7150	#Krugerrand of Donamere 490
J&J Queenie 9206 +13412890	+A&B Queen 4173
C&C Queen 418	Bando of Conanga 573
	WK Queen 2147

These flushmates rank among the best 5% of non-parent females for YW EPD.

## 15 J&J QUEEN 617

Calved: 2/05/2006 • Cow: +15507091 • Tattoo: 617

BW EPD	WW EPD	YW EPD	SC EPD	MILK EPD	%IMF EPD	UREA EPD
I +3.3	I +49	I +95	I +.17	I +10	I +.34	I -.08

This very stylish, structurally correct daughter of Queenie 9206 sells halter broke.

- Breeding information available sale day.

\$WEAN	\$FEEDLOT	\$GRID	\$BEEF
+18.78	+36.13	+16.42	+43.22



16

## 16 J&J QUEEN 6119

Calved: 3/07/2006 • Cow: +15507106 • Tattoo: 6119

BC Marathon 7022 14187839	OCC Kirby 633K	#+OCC Emblazon 854E
	Gibbet Hill Mignonne E37	+OCC Blackbird 785H
		#Papa Equator 2928
		Gibbet Hill Mignonne TR 29
J&J Queenie 9206 +13412890	#+A&B Yukon 7150	#Krugerrand of Donamere 490
	C&C Queen 418	+A&B Queen 4173
		Bando of Conanga 573
		WK Queen 2147

BW EPD	WW EPD	YW EPD	SC EPD	MILK EPD	%IMF EPD	UREA EPD
I +4.0	I +56	I +99	I +.15	I +13	I +.09	I +.04

6119 is a deep ribbed, broody heifer with a YW EPD in the best 2% of non-parent Angus females. She is one of the larger framed 9206 yearling daughters and posted a ratio of 110 on her yearling IMF scan. 6119's sire, BC Marathon, is among the trait leaders for Ultrasound REA and is quickly earning the reputation of a sire that will add look, power and body. Flush sister sells as Lot 9.

- Breeding information available sale day.

\$WEAN	\$FEEDLOT	\$GRID	\$BEEF
+22.17	+37.49	+10.00	+39.06

# DIXIE ERICA FAMILY



## 17 J&J DIXIE ERICA 520

Calved: 2/10/2005 • Cow: +15132207 • Tattoo: 520

EXAR New Look 2971  
+14230122

J&J 6807 Dixie 012  
+13730176

#Bon View New Design 1407  
N Bar Primrose 2424

#DHD Traveler 6807  
Dixie Erica of RR 7530

#B/R New Design 036  
Bon View Pride 664  
#Emulation 31  
Primrose N Bar 9962

#QAS Traveler 23-4  
#Bemindful Maid DHD 0807  
#E&B 1483 Scotchman 5041  
#Dixie Erica of RR 3506

BW EPD	WW EPD	YW EPD	SC EPD	MILK EPD	%IMF EPD	UREA EPD
+2.4	+42	+82	+27	+23	+00	+60

\$WEAN	\$FEEDLOT	\$GRID	\$BEEF
+23.89	+25.39	+14.24	+35.89

A very nice two year old that descends from the Dixie Erica 7530 cow, one of the foundation donors of our operation. 520 is a very sound, deep ribbed, stout female with tremendous udder quality and short teats. Her mother is jointly owned with A-Cross and is in our donor program. Sells with a very nice heifer calf at side sired by the No. 1 bull in the breed for IMF, Stevenson Benchmark. Flush sister sells as Lot 19.

17A Heifer calf born 3/05/2007, tattoo 757, by STEVENSON BENCHMARK N190. BW 75 lbs.



17

## 18 J&J DIXIE ERICA 443

Calved: 3/12/2004 • Cow: +14694460 • Tattoo: 443

EXAR Sudden Impact 1537  
13806056

Dixie Erica of RR 7530  
12903922

#Northern Improvement 4480 GF  
+BLR Blushing Pride 9097

#E&B 1483 Scotchman 5041  
#Dixie Erica of RR 3506

#TC Stockman 365  
Blackcap of RR 5367  
#GDAR Traveler 71  
+Blushing Pride of OSU  
#RR 9440 Scotch Cap 1483  
Lady 183 Traveler 334  
Corral Creek Strath C061  
#Dixie Erica of RR 8258

BW EPD	WW EPD	YW EPD	SC EPD	MILK EPD	%IMF EPD	UREA EPD
+1.4	+43	+80	+77	+24	+03	+31

\$WEAN	\$FEEDLOT	\$GRID	\$BEEF
+27.05	+22.94	+15.19	+35.50

A powerful three-year-old donor with extra bone, width and style and a direct daughter of Dixie Erica 7530, a foundation donor in the EXAR and J&J programs and now a featured donor at Ratcliff Ranch. 443 will have one of the first calves born at J&J sired by Double Take, the high selling lot in our 2006 sale. Her first natural calf, selling as Lot 22, posted ratios of 109 for both IMF and REA as a yearling.

• Will calve in May to J&J DOUBLE TAKE 550.



18

## 19 J&J DIXIE ERICA 521

Calved: 2/11/2005 • Cow: +15132208 • Tattoo: 521

EXAR New Look 2971  
+14230122

J&J 6807 Dixie 012  
+13730176

#Bon View New Design 1407  
N Bar Primrose 2424

#DHD Traveler 6807  
Dixie Erica of RR 7530

#B/R New Design 036  
Bon View Pride 664  
#Emulation 31  
Primrose N Bar 9962

#QAS Traveler 23-4  
#Bemindful Maid DHD 0807  
#E&B 1483 Scotchman 5041  
#Dixie Erica of RR 3506

BW EPD	WW EPD	YW EPD	SC EPD	MILK EPD	%IMF EPD	UREA EPD
+3.2	+44	+83	+27	+23	+04	+35

\$WEAN	\$FEEDLOT	\$GRID	\$BEEF
+23.37	+25.62	+14.28	+36.34

Another stout, stylish two year old selling with a bull calf at side sired by J&J Sudden Impact. A flushmate to Lot 17, produced by a powerful daughter of DHD Traveler 6807.

19A Bull calf born 4/10/2007, tattoo 775, by J&J SUDDEN IMPACT 5118. BW 80 lbs.



19

# DIXIE ERICA FAMILY



## 20 J&J DIXIE ERICA 677

Calved: 10/08/2006 • Cow: +15632794 • Tattoo: 677

Schurrtop MC 2500  
14840227  
Schurrtop RS 1413 2153  
#DHD Traveler 6807  
J&J 6807 Dixie 012  
+13730176  
Dixie Erica of RR 7530

#Papa Equator 2928  
Schurrtop 1483 9024  
Brooks Schurr Trend  
Ryans Schurrtop 2125  
#QAS Traveler 23-4  
#Bemindful Maid DHD 0807  
#E&B 1483 Scotchman 5041  
#Dixie Erica of RR 3506

BW EPD	WW EPD	YW EPD	SC EPD	MILK EPD	%IMF EPD	UREA EPD
1+3.1	1+39	1+82	1+.34	1+18	1-.02	1+.44

One of the most powerful, biggest topped females in the entire sale offering, 677 combines this stoutness with style and a genetic tabulation featuring a positive scrotal EPD (1+.34) and strong growth figures. A big time cow in the making from a great cow family. Co-owned with A-Cross Ranch.

- Sells open.

\$WEAN	\$FEEDLOT	\$GRID	\$BEEF
+19.00	+26.58	+13.47	+34.98



## 21 J&J DIXIE ERICA 674

Calved: 9/29/2006 • Cow: +15632791 • Tattoo: 674

BR Midland  
13898124  
BR Royal Lass 7036-19  
#DHD Traveler 6807  
J&J 6807 Dixie 012  
+13730176  
Dixie Erica of RR 7530

#Twin Valley Precision E161  
#GAR Precision 1680  
+WCC Blackcap C9  
#+SAF Neutron  
#SAF Royal Lass 7036  
#QAS Traveler 23-4  
#Bemindful Maid DHD 0807  
#E&B 1483 Scotchman 5041  
#Dixie Erica of RR 3506

BW EPD	WW EPD	YW EPD	SC EPD	MILK EPD	%IMF EPD	UREA EPD
1+1.8	1+41	1+78	1+.12	1+15	1+.34	1+.36

An attractive profiling show and brood cow prospect sired by the bull with the breed's fourth highest IMF EPD among proven sires. 674 is a fancy, deep flanked, feminine fronted heifer with a calm disposition. Co-owned with A-Cross Ranch.

- Sells open.

\$WEAN	\$FEEDLOT	\$GRID	\$BEEF
+22.91	+21.69	+19.89	+36.79



## 22 J&J DIXIE ERICA 630

Calved: 2/15/2006 • Cow: 15507085 • Tattoo: 630

BR Midland  
13898124  
BR Royal Lass 7036-19  
EXAR Sudden Impact 1537  
J&J Dixie Erica 443  
+14694460  
Dixie Erica of RR 7530

#Twin Valley Precision E161  
#GAR Precision 1680  
+WCC Blackcap C9  
#+SAF Neutron  
#SAF Royal Lass 7036  
#+Northern Improvement 4480 GF  
+BLR Blushing Pride 9097  
#E&B 1483 Scotchman 5041  
#Dixie Erica of RR 3506

BW EPD	WW EPD	YW EPD	SC EPD	MILK EPD	%IMF EPD	UREA EPD
+0.0	+41	1+81		+18	1+.39	1+.49

Moderate framed, big ribbed, thick and sound structured, this heifer is an outstanding brood cow prospect. She posted ratios of 109 for both IMF and REA as a yearling. This heifer helped convince us to flush her mother, who sells as Lot 18.

- Breeding information available sale day.

\$WEAN	\$FEEDLOT	\$GRID	\$BEEF
+25.24	+24.76	+25.16	+46.08



**Lots 23 and 24:**

CW Dakota  
14753559 CW 686 Lucy Belle 044

#DHD Traveler 6807  
J&J 6807 Dixie 012  
+13730176 Dixie Erica of RR 7530

#CA Future Direction 5321  
#New Trend 315 KG3  
Generic Bando 3117  
#CW 379 Lucy Erica 686  
#QAS Traveler 23-4  
#Bemindful Maid DHD 0807  
#E&B 1483 Scotchman 5041  
#Dixie Erica of RR 3506

Co-owned with A-Cross Ranch.



Dixie Erica 7530 of RR —  
Dam or  
grandam of  
Lots 17-24

# 23 J&J DIXIE ERICA 6111

Calved: 3/14/2006 • Cow: +15507123 • Tattoo: 6111

BW EPD	WW EPD	YW EPD	SC EPD	MILK EPD	%IMF EPD	UREA EPD
I +2.8	I +41	I +75	I +28	I +20	I +.12	I +.52

6111 has been a favorite at J&J. Very fancy and attractive fronted, good bodied with excellent body shape and thickness. We intended to get a picture but got scuttled by weather. This female really impressed Chad Gordon, our ultrasound technician, by posting ratios of 114 for IMF and 108 for REA.

• Breeding information available sale day.

\$WEAN	\$FEEDLOT	\$GRID	\$BEEF
+23.42	+18.65	+15.46	+32.81

# 24 J&J DIXIE ERICA 6112

Calved: 3/14/2006 • Cow: +15507124 • Tattoo: 6112

BW EPD	WW EPD	YW EPD	SC EPD	MILK EPD	%IMF EPD	UREA EPD
I +2.8	I +41	I +75	I +28	I +20	I -.06	I +.30

• Breeding information available sale day.

\$WEAN	\$FEEDLOT	\$GRID	\$BEEF
+23.42	+18.65	+10.25	+27.60

## SPRING COW/CALF PAIRS

# 25 J&J T71 EMPRESS 340

Calved: 3/01/2003 • Cow: +14433612 • Tattoo: 340

GDAR Traveler 71  
#10988296 GDAR Miss Blackcap 567

#GDAR Executive 727  
Blushing Pride of OSU  
+11870574 +DF Empress 6079

#QAS Traveler 23-4  
#Blackcap Forever 485 GDAR  
Lavana 355 GDAR  
#Blackcap Lady 384 GDAR  
#+PJM Power 291  
GDAR Rachel 5115  
#Pine Drive Big Sky  
KAF Miss Jetliner 641 1B4

BW EPD	WW EPD	YW EPD	SC EPD	MILK EPD	%IMF EPD	UREA EPD
+2.0	+34	+64	+67	+29	+09	+10

Descending from the famous DF Empress 6079 cow family, Empress 340 is a full sister to the mother of EXAR Sudden Impact 1537. 340 posted ratios of 116 for IMF and 101 for REA. She went on to post a nursing ratio of 111 on her first calf, who earned ratios of 103 for IMF and 110 for REA as a yearling. Co-owned with Jeff Mafi.

**25A** Heifer calf born 2/28/2007, tattoo 753, by SCHURRTOP MC 2500. BW 83 lbs.



25

# 26 J&J 1407 JILT 518

Calved: 2/06/2005 • Cow: +15132185 • Tattoo: 518

Bon View New Design 1407  
#12783540 Bon View Pride 664

#E&B 1483 Scotchman 5041  
OSU Jilt 2103  
14127428 OSU Ultress 5125

#VDAR New Trend 315  
B/R Blackcap Empress 76  
#+GAR Sleep Easy 1009  
#Bon View Pride 1551  
#RR 9440 Scotch Cap 1483  
Lady 183 Traveler 334  
#+OSU 6T6 Ultra  
+ROR Jilt 147V

BW EPD	WW EPD	YW EPD	SC EPD	MILK EPD	%IMF EPD	UREA EPD
I +1.8	I +39	I +79	I +26	I +23	+25	+29

Descending from the famous Jilt cow family, 518 is a full sister to one the feature lots from our 2006 sale. 518's mother was a feature cow for J&J and is now a donor for Fox Land & Cattle in Canada. 518 is typical of the Jilt cow family, as they are characteristically maternal, productive and sound. Sells with a stout bull calf by BR Midland.

**26A** Bull calf born 2/04/2007, tattoo 728, by BR MIDLAND. BW 79 lbs.



26

## 27

### BLACKBIRD PRIME 4001

Calved: 9/03/2003 • Cow: 14748784 • Tattoo: 4001

Summitcrest High Prime 0H29  
13122485  
Summitcrest Missie 2F55

#RR Traveler 5204  
#Green Garden Susie 1246 S1  
#Finks 5522-6148  
#Summitcrest Missie 1C24

Blackbird of RR 7452  
12903862  
Blackbird of RR 8272

#RR Scotchcap 9440  
#Scotch Cap  
Blackcap of RR 5367  
#Highwood Hero LCH  
#Blackbird of RR 5314

BW EPD	WW EPD	YW EPD	SC EPD	MILK EPD	%IMF EPD	UREA EPD
+2.3	+40	+72	I +.03	+17	I +.12	I +.20

The only female in the sale sired by High Prime, 4001 is the natural calf of a former J&J donor. She sells with a growthy bull calf at side.

\$WEAN	\$FEEDLOT	\$GRID	\$BEEF
+23.51	+16.02	+21.75	+34.85

**27A** Bull calf born 2/02/2007, tattoo 717, by SCHURRTOP MC 2500. BW 89 lbs.

## 28

### J&J OAKLEAF 551

Calved: 3/11/2005 • Cow: +15131136 • Tattoo: 551

BR Midland  
13898124  
BR Royal Lass 7036-19

#GAR Precision 1680  
+WCC Blackcap C9  
#+SAF Neutron  
#SAF Royal Lass 7036

J&J Oakleaf 117  
+13844176  
WAF Rally Oakleaf 5144

#+A&B Yukon 7150  
#Krugerrand of Donamere 490  
+A&B Queen 4173  
#RR Traveler 5204  
#Rally Oakleaf 5142

BW EPD	WW EPD	YW EPD	SC EPD	MILK EPD	%IMF EPD	UREA EPD
I +2.4	I +47	I +87	I +.28	I +16	+42	+12

A stylish two year old with a stout 2500 bull calf at side. This female

\$WEAN	\$FEEDLOT	\$GRID	\$BEEF
+23.77	+28.55	+21.62	+44.89

is structurally correct and functionally sound with tremendous udder quality and teat size. 551 is a flush sister to the Supreme Champion Angus Heifer at the Mississippi State Fair and Dixie National junior shows, J&J Oakleaf 5106, purchased by Jason Manning in our 2006 sale. Co-owned with Jeff Mafi.

**28A** Bull calf born 3/08/2007, tattoo 761, by SCHURRTOP MC 2500. BW 94 lbs.

## 29

### J&J ERICA 517

Calved: 2/04/2005 • Cow: 15132190 • Tattoo: 517

BR Midland  
13898124

#Twin Valley Precision E161  
BR Royal Lass 7036-19

#GAR Precision 1680  
+WCC Blackcap C9  
#+SAF Neutron  
#SAF Royal Lass 7036

J&J Erica 126  
13844184

#+A&B Yukon 7150  
Lyons Erica 4001

#Krugerrand of Donamere 490  
+A&B Queen 4173  
#Tehama Bando 155  
Lyons Erica 2038

BW EPD	WW EPD	YW EPD	SC EPD	MILK EPD	%IMF EPD	UREA EPD
+0.5	+50	+90		+16	+27	+26

Long bodied, good uddered two year old with tremendous Birth-to-Yearling EPD spread and a strong \$Beef number.

\$WEAN	\$FEEDLOT	\$GRID	\$BEEF
+27.80	+30.46	+19.35	+43.89

**29A** Heifer calf born 4/12/2007, tattoo 776, by J&J SUDDEN IMPACT 5118. BW 70 lbs.

## 30

### PF 1407 MISS WIX 2468

Calved: 9/23/2002 • Cow: +14322084 • Tattoo: 2468

Bon View New Design 1407  
#12783540

#B/R New Design 036  
Bon View Pride 664

#VDAR New Trend 315  
B/R Blackcap Empress 76  
#+GAR Sleep Easy 1009  
#Bon View Pride 1551

PF 365 Miss Wix 9202  
+13448890

#TC Stockman 365  
#GDAR Miss Wix 3325

#TC Stockman  
TC Pride 0014  
#Traveler 3173 GDAR  
GDAR Miss Wix 1122

BW EPD	WW EPD	YW EPD	SC EPD	MILK EPD	%IMF EPD	UREA EPD
I +1.9	I +37	I +72	I +.39	I +32	+26	+38

This powerful, big ribbed cow posted strong ultrasound ratios as a yearling. She has averaged over 15 embryos per flush in our ET program.

\$WEAN	\$FEEDLOT	\$GRID	\$BEEF
+23.51	+17.19	+22.76	+37.87

**30A** Bull calf born 2/03/2007, tattoo 725, by SCHURRTOP MC 2500. BW 102 lbs.

## 31

### A CROSS LADY A503

Calved: 2/03/2005 • Cow: 15124034 • Tattoo: A503

BR Midland  
13898124

#Twin Valley Precision E161  
BR Royal Lass 7036-19

#GAR Precision 1680  
+WCC Blackcap C9  
#+SAF Neutron  
#SAF Royal Lass 7036

OSU Lady 2108  
14088697

#Bon View New Design 1407  
OSU Lady 0162

#B/R New Design 036  
Bon View Pride 664  
+OSU 6079 Reagan 8173  
OSU Lady Pam 8131

BW EPD	WW EPD	YW EPD	SC EPD	MILK EPD	%IMF EPD	UREA EPD
+1.5	+40	+78		+18	+66	+53

503 comes from the heart of our first-calf heifers. She was the

\$WEAN	\$FEEDLOT	\$GRID	\$BEEF
+23.89	+22.08	+27.42	+45.36

highest rationing heifer in her contemporary group at 142 for IMF and 107 for REA. Her %IMF and UREA EPDs rank among the top 1% and 3% of the breed, respectively. She also ranks in the top 2% for \$Beef. She is big volumed, attractive and very sound in her udder structure. Her dam was purchased last year in the first J&J sale by Jarrel Cutright of Elk City. Don't miss this exciting young pair!

**31A** Bull calf born 1/25/2007, tattoo A711, by BON VIEW NEW DESIGN 1407. BW 83 lbs.

*Guest Consignment:*  
*A-Cross Ranch*  
*Lots 31-36*

# A-CROSS RANCH



## 32

### OSU AR EMPRESS 5128

Calved: 1/28/2005 • Cow: 15067309 • Tattoo: 5128

BR Midland  
13898124

#Twin Valley Precision E161  
BR Royal Lass 7036-19

#GAR Precision 1680  
+WCC Blackcap C9  
#+SAF Neutron  
#SAF Royal Lass 7036

OSU Empress 3116  
+14446750

EXAR Sudden Impact 1537  
+OSU Empress 1111

#+Northern Improvement 4480 GF  
+BLR Blushing Pride 9097  
#+RR Bentley 779F  
+DF Empress 6079

BW EPD	WW EPD	YW EPD	SC EPD	MILK EPD	%IMF EPD	UREA EPD
+1.2	+44	+87			+31	+57

\$WEAN	\$FEEDLOT	\$GRID	\$BEEF
+24.62	+29.76	+20.96	+45.19

5128 is an attractive, correctly structured Midland two year old out of the 3116 donor female we own with Oklahoma State University. In addition to a solid set of Production EPDs, her Ultrasound EPDs rank in the top 4% and 2% for %IMF and REA. She also ranks in the top 2% of the breed for \$B. Another top young female from the heart of the A-Cross herd.

**32A** Heifer calf born 1/18/2007, tattoo A701, by EXAR NEW LOOK 2971. BW 67 lbs.



## 33

### A CROSS ERISKAY A516

Calved: 3/07/2005 • Cow: 15124031 • Tattoo: A516

White Oak Precise 6002  
#13205097

#GAR Precision 1680  
Stone Gate Jessie

#Tehama Bando 155  
9J9 GAR 856  
#Rito 2100 GDAR  
Julagem of Craigie

A Cross Eriskay A08  
14683137

OSU Prompt 9195  
+PAF 879B 9440 9915

OSU Prompter 869A  
OSU Casha 7136  
#RR Scotchcap 9440  
Eriskay of Rollin Rock 879B

BW EPD	WW EPD	YW EPD	SC EPD	MILK EPD	%IMF EPD	UREA EPD
+2.3	+36	+70		+9	+12	+0.0

\$WEAN	\$FEEDLOT	\$GRID	\$BEEF
+17.93	+15.57	+14.61	+28.96

516 is a solid two year old with good body that is doing a nice job with her first calf. Her dam sold to Limestone last year in this sale.

**33A** Heifer calf born 1/19/2007, tattoo A702, by BON VIEW NEW DESIGN 1407. BW 70 lbs.

## 35

### A CROSS PROMISE A513

Calved: 2/24/2005 • Cow: 15122596 • Tattoo: A513

EXAR New Look 2971  
+14230122

#Bon View New Design 1407  
N Bar Primrose 2424

#B/R New Design 036  
Bon View Pride 664  
#Emulation 31  
Primrose N Bar 9962

OSU Promise 2188  
14127540

+OSU 6079 Reagan 8173  
OSU Promise 9146

#N Bar Emulation EXT  
+DF Empress 6079  
#+OSU 6T6 Ultra  
OSU 869B Lady Promise 190C

BW EPD	WW EPD	YW EPD	SC EPD	MILK EPD	%IMF EPD	UREA EPD
+2.8	+42	+78		+22	+0.9	+1.5

\$WEAN	\$FEEDLOT	\$GRID	\$BEEF
+23.92	+21.29	+14.34	+33.61

Another attractive, long bodied, sound uddered New Look two year old whose dam has been a consistent producer for us. 513's bull calf at side is sired by our choice of the Denver Pen Bulls in the 2006 Cowboy Classic Sale.

**35A** Bull calf born 2/19/2007, tattoo A720, by OSU PRECISION 5105. BW 72 lbs.

## 34

### A CROSS BARBARAMERE A511

Calved: 2/11/2005 • Cow: 15122600 • Tattoo: A511

EXAR New Look 2971  
+14230122

#Bon View New Design 1407  
N Bar Primrose 2424

#B/R New Design 036  
Bon View Pride 664  
#Emulation 31  
Primrose N Bar 9962

SAF Barbaramere L166  
13826811

#SAF Focus of ER  
SAF Barbaramere J101

#SAF Fame  
GDAR Forever Lady 246  
PAF Power Stroke  
SAF E20 of C99 Dividend

BW EPD	WW EPD	YW EPD	SC EPD	MILK EPD	%IMF EPD	UREA EPD
+1.9	+44	+81	+37	+25	+0.8	+4.0

\$WEAN	\$FEEDLOT	\$GRID	\$BEEF
+27.06	+23.56	+13.43	+34.23

511 is a solid New Look two year old. Her dam has been an excellent producing cow that is still working in our herd. 511 has a solid set of Production EPDs and ranks in the top 10% of the breed for maternal traits and Ultrasound Ribeye.

**34A** Heifer calf born 1/26/2007, tattoo A712, by BR MIDLAND. BW 72 lbs.

## 36

### A CROSS LADY LOOK A522

Calved: 3/17/2005 • Cow: 15122598 • Tattoo: A522

EXAR New Look 2971  
+14230122

#Bon View New Design 1407  
N Bar Primrose 2424

#B/R New Design 036  
Bon View Pride 664  
#Emulation 31  
Primrose N Bar 9962

PAF Traveler Sky 7504  
12949637

#DHD Traveler 6807  
PAF Lady Sky 8001

#QAS Traveler 23-4  
#Bemindful Maid DHD 0807  
#Pine Drive Big Sky  
OSU Liberty Belle B 142

BW EPD	WW EPD	YW EPD	SC EPD	MILK EPD	%IMF EPD	UREA EPD
+3.3	+42	+80	+4.0	+24	+0.7	+4.8

\$WEAN	\$FEEDLOT	\$GRID	\$BEEF
+22.91	+23.33	+12.87	+33.23

522 is a deep bodied, easy keeping two year old. She has a balanced set of EPDs and ranks in the top 4% of the breed for UREA EPD.

**36A** Heifer calf born 2/20/2007, tattoo A722, by OSU PRECISION 5105.



# THE ROLLIN ROCK THREE YEAR OLDS

**At J&J,** we have a great appreciation for productive, fertile, sound, low-maintenance cows, which is why we have incorporated cows from the Rollin Rock program in Montana into our operation over the past ten years. Beginning with Dixie Erica 7530 of RR, the cow family featured in lots 17 through 24, we continue to appreciate the Rollin Rock cows for their high level of function and productivity. The next 13 lots are a sampling of a group which we purchased as bred heifers out of the Rollin Rock operation. These females did a tremendous job raising their first calves last spring and summer, and we are pleased to offer them in this sale.



**37**

## 37 ROLLIN ROCK BLACKBIRD 4191

Calved: 2/20/2004 • Cow: 14774832 • Tattoo: 4191

#SAF Focus of ER  
RR Gold Buckle 2225  
+14320984 RR Everelda Entense 0413

#SAF Fame  
GDAR Forever Lady 246  
#QAS Traveler 23-4  
RR Everelda Entense 8320 TPB

#Lukens 711 Buster 3163  
Rollin Rock Blackbird 9964  
13458720 Rollin Rock Blackbird 3514

#+GDAR Oscar 711  
GDAR Forever Lady 9163  
Vermilion Traveler 1007  
Rollin Rock Blackbird 1504

BW EPD	WW EPD	YW EPD	SC EPD	MILK EPD	%IMF EPD	UREA EPD
+4.5	+42	+76	1 +.57	+21	+4.8	+0.6

4191 is a long, deep, sound, feminine fronted cow that ranks in the best 1% of active dams for IMF EPD. It is likely her IMF predictor will continue to rise, considering that she scanned with 7.75% IMF to ratio 184 as a yearling in the Rollin Rock herd and balanced this with a REA ratio of 103. Her first calf, sired by Image Maker 0415, recently posted a ratio of 136 for IMF.

SWEAN	\$FEEDLOT	\$GRID	\$BEEF
+20.74	+19.27	+21.75	+38.29

**37A** Heifer calf born 2/06/2007, tattoo 735, by EXAR NEW LOOK 2971. BW 81 lbs.



**38**

## 38 DIXIE ERICA OF RR 4809

Calved: 3/06/2004 • Cow: +14775021 • Tattoo: 4809

#RR Scotchcap 9440  
RR Black Label 4560  
#12222572 Eriskay of Rollin Rock 0424

#Scotch Cap  
Blackcap of RR 5367  
#RR Hero 6267  
Eriskay of Rollin Rock 8211

Lost Lake Home Run  
Dixie Erica of RR 4570  
#12222531 Dixie Erica of RR 1425

#Ankonian Cornhusker  
#Bemindful Maid 283 LLR  
#CH Stacker 7040  
Dixie Erica of RR 6203

BW EPD	WW EPD	YW EPD	SC EPD	MILK EPD	%IMF EPD	UREA EPD
+4.2	+48	+90	1 +.25	+25	+0.3	-.13

A stout, heavy boned female with a square hip, big rib cage and excellent udder quality. 4809 posted a nursing ratio of 110 on her first natural calf by Image Maker 0415, who went on to ratio 115 for yearling weight and recorded an IMF ratio of 111. 4809's spring 2007 bull calf by MC 2500 is very stout.

SWEAN	\$FEEDLOT	\$GRID	\$BEEF
+23.10	+31.27	+1.70	+27.03

**38A** Bull calf born 2/24/2007, tattoo 751, by SCHURRTOP MC 2500. BW 84 lbs.



# THE ROLLIN ROCK THREE YEAR OLDS



## 39

### BLACKBIRD OF RR 4258

Calved: 2/27/2004 • Cow: 14774849 • Tattoo: 4258

EXAR Merit 216  
+14136787

#Bon View New Design 1407  
Dixie Erica of RR 7530

#B/R New Design 036  
Bon View Pride 664  
#E&B 1483 Scotchman 5041  
Dixie Erica of RR 3506

+Lukens Forever Future 7000

#DHD Traveler 6807  
GDAR Forever Lady 7171  
#RR Regal 1459  
Blackbird of RR 5217

Blackbird of RR 9854  
13458678

Blackbird of RR 7528

BW EPD	WW EPD	YW EPD	SC EPD	MILK EPD	%IMF EPD	UREA EPD
-0.3	+28	+55	1 +.11	+18	+16	+0.9

A stylish, deep flanked female with extra style and balance. 4258 combines tremendous udder quality with positive scrotal genetics and a Birth EPD in the best 5% of current dams.

**39A** Heifer calf born 2/04/2007, tattoo 730, by SCHURRTOP MC 2500. BW 95 lbs.



## 39

## 40

### PAPA ERISKAY 4261 CDJ

Calved: 2/27/2004 • Cow: 14856293 • Tattoo: 4261

Papa Equator 2928  
#11788302

#+Papa Power 096  
#Papa Envious Blackbird 8849

#Cottontail Maternal Power464  
Blackbird DHD 2816  
Papa Rito Traveler 4807  
Envious Blackbird DHD 5848

#Papa Rito T Intense DHD 6844  
Papa Intense Eriskay M152  
+14032069  
#Eriskay DHD 6815

Papa Rito Traveler 4807  
Blackcap McHenry DHD 4810  
#Cottontail Maternal Power464  
Eriskay DHD 3806

BW EPD	WW EPD	YW EPD	SC EPD	MILK EPD	%IMF EPD	UREA EPD
+5.7	+43	+81	1 +.64	+16	+10	+2.6

Productive in appearance, deep bodied, with great udder attachment and teat size. This young, direct daughter of Papa Equator 2928 with high scrotal genetics posted ratios of 107 for IMF and 106 for REA as a yearling.

**40A** Bull calf born 2/09/2007, tattoo 742, by STEVENSON BENCHMARK N190. BW 93 lbs.



## 40

## 41

### ROLLIN ROCK BLACKBIRD 4730

Calved: 3/30/2004 • Cow: 14774997 • Tattoo: 4730

HA Image Maker 0415  
+13739532

#Hero 6267 of RR 2418  
HA Rito Blackcap 9038

#RR Hero 6268  
RR Everelda Entense 0413  
H 96 Rito 2100 7371  
H 96 Blackcap 3835

HA 2041 Traveler 5016

#HA Traveler 2041  
#+PB Forever Lady 3161  
Leachman Axiom  
Rollin Rock Blackbird 9404

Rollin Rock Blackbird 9852  
13458676

Rollin Rock Blackbird 4534

BW EPD	WW EPD	YW EPD	SC EPD	MILK EPD	%IMF EPD	UREA EPD
+4.2	+48	+78		+29	-0.2	+1.5

An attractively made, deep flanked cow by the increasingly popular Image Maker 0415. 4730's first natural calf weaned at a 110 ratio and posted an IMF ratio of 111.

**41A** Bull calf born 2/05/2007, tattoo 732, by BR MIDLAND. BW 97 lbs.



## 41



## 42 RR BLACKCAP 4507

Calved: 3/02/2004 • Cow: 14774912 • Tattoo: 4507

E&B 878 New Design 264  
14202935  
+E&B Lady EXT 858

#B/R New Design 036  
Bon View Gammer 85  
#N Bar Emulation EXT  
Lady Scotch Traveler 320  
#RR Hero 6267  
RR Everelda Entense 0413  
#RR Ferdinand 758D  
HA Rito Blackcap 9038

HA Blackcap 1076  
13883483  
HA Blackcap 6235

BW EPD	WW EPD	YW EPD	SC EPD	MILK EPD	%IMF EPD	UREA EPD
+4.5	+41	+68	+0.04	+19	+0.00	+4.8

4507 sells with an April heifer calf at side by our Midland son 5111, whose flush sister was the second high selling yearling heifer in our 2006 sale.

**42A** Heifer calf born 4/13/2007, tattoo 777, by J&J MIDLAND 5111.  
BW 85 lbs.

SWEAN	\$FEEDLOT	\$GRID	\$BEEF
+21.65	+11.65	+12.74	+25.61

## 43 BLACKBIRD OF ROLLINROCK 4314

Calved: 2/08/2004 • Cow: 14774871 • Tattoo: 4314

#GAR Precision 1680  
E7B 1680 Precision 151  
13913497  
E&B Lady 4137 EXT 945

#Tehama Bando 155  
9J9 GAR 856  
#Gardens EXT 4137 S2  
E&B Lady Arbitrator 7004  
#High Valley 4C6 Ambush  
#+Jolly R Forever 137E  
CH Regal 7299  
Blackbird of RR 4195

JR Ambush 2931  
Blackbird of RollinRock 2368  
14355956  
Blackbird of RR 0291

BW EPD	WW EPD	YW EPD	SC EPD	MILK EPD	%IMF EPD	UREA EPD
+3.3	+41	+69	+0.25	+20	+0.20	+4.2

This cow, sired by one of the breed's leading bulls for Ultra-sound REA, posted ratios of 124 for IMF and 111 for REA as a yearling. 4314's first natural calf earned her a nursing ratio of 102.

**43A** Heifer calf born 2/03/2007, tattoo 726, by EXAR NEW LOOK 2971.  
BW 83 lbs.

SWEAN	\$FEEDLOT	\$GRID	\$BEEF
+23.81	+12.64	+20.14	+33.69

## 44 ROLLIN ROCK BLACKBIRD 4060

Calved: 2/10/2004 • Cow: 14846277 • Tattoo: 4060

#DHD Traveler 6807  
Rito 616 of 4B20 6807  
#12530601  
+Rita 4B20 of 0FB1 Bando

#QAS Traveler 23-4  
#Bemindful Maid DHD 0807  
#Tehama Bando 155  
+Rita 0FB1 of 5H11 Fullback  
#Hero 6267 of RR 2418  
HA Rito Blackcap 9038  
RR Chevis 6455  
+Rollin Rock Blackbird 7556

Rollin Rock Blackbird 2814  
14356085  
Rollin Rock Blackbird 9927

BW EPD	WW EPD	YW EPD	SC EPD	MILK EPD	%IMF EPD	UREA EPD
+1.5	+47	+88		+24	+0.03	+1.3

A big ribbed, powerful three-year-old daughter of 616 with an impressive EPD spread from Birth to Yearling. 4060's first natural calf balanced a birth weight ratio of 97 with a weaning weight ratio of 107. 4060 posted individual ratios of 105 for IMF and 101 for REA as a yearling.

**44A** Heifer calf born 2/28/2007, tattoo 752, by SCHURRTOP MC 2500.  
BW 90 lbs.

SWEAN	\$FEEDLOT	\$GRID	\$BEEF
+28.88	+29.59	+10.49	+35.03

## 45 DIXIE ERICA OF RR 4302

Calved: 2/05/2004 • Cow: 14774867 • Tattoo: 4302

#RR Hero 6267  
Hero 6267 of RR 2418  
#11808572  
RR Everelda Entense 0413

#Highwood Hero LCH  
#Blackbird of RR 1204  
#QAS Traveler 23-4  
RR Everelda Entense 8320 TPB  
#High Valley 4C6 Ambush  
#+Jolly R Forever 137E  
#RR Hero 6267  
Dixie Erica of RR 6339

JR Ambush 2931  
Dixie Erica of RR 2327  
14355939  
Dixie Erica of RR 2499

BW EPD	WW EPD	YW EPD	SC EPD	MILK EPD	%IMF EPD	UREA EPD
-0.1	+43	+66		+30	-0.02	+1.9

This productive three-year-old female posted ratios of 120 for IMF and 108 for REA as a yearling at Rollin Rock. Her first natural calf balanced a 92 ratio for birth weight with a 110 ratio at weaning.

**45A** Bull calf born 2/10/2007, tattoo 745, by EXAR NEW LOOK 2971.  
BW 72 lbs.

SWEAN	\$FEEDLOT	\$GRID	\$BEEF
+34.60	+8.92	+9.56	+21.00

## 46 ERISKAY OF ROLLIN ROCK 4173

Calved: 2/18/2004 • Cow: 14808950 • Tattoo: 4173

#Twin Valley Precision E161  
BR Midland 13898124  
BR Royal Lass 7036-19

#GAR Precision 1680  
+WCC Blackcap C9  
#+SAF Neutron  
#SAF Royal Lass 7036  
#HA Traveler 2041  
#+PB Forever Lady 3161  
#QAS Traveler 23-4  
Eriskay of Rollin Rock 5269

HA 2041 Traveler 5016  
Eriskay of Rollin Rock 8636  
13176052  
#Eriskay of Rollin Rock 7216

BW EPD	WW EPD	YW EPD	SC EPD	MILK EPD	%IMF EPD	UREA EPD
+2.7	+34	+66	+0.45	+12	+0.47	+0.5

A long, deep ribbed, extremely correct cow that weaned over 1050 pounds of twin calves last year. 4173 posted an individual ratio of 151 for yearling IMF. This very nice female sells with the first calf born at J&J by Double Take 550, the high selling bull from our 2006 sale.

**46A** Heifer calf born 4/17/2007, tattoo 780, by J&J DOUBLE TAKE 550.  
BW 68 lbs.

SWEAN	\$FEEDLOT	\$GRID	\$BEEF
+18.01	+12.36	+24.19	+35.82

## 47 ROLLIN ROCK BLACKBIRD 4346

Calved: 2/20/2004 • Cow: 14774883 • Tattoo: 4346

Hero 6267 of RR 2418  
#11808572  
RR Everelda Entense 0413

#Highwood Hero LCH  
#Blackbird of RR 1204  
#QAS Traveler 23-4  
RR Everelda Entense 8320 TPB

CH Blackbird 9487  
#13342138  
N Bar Explosion V1495  
#CH Blackbird 5756

#N Bar Explosion  
#N Bar Kinochtry Beauty 4317  
#RR Regal 1459  
Blackbird of CH 6040

BW EPD	WW EPD	YW EPD	SC EPD	MILK EPD	%IMF EPD	UREA EPD
+2.3	+43	+66	I +.52	+25	-.18	+.29

4346's first calf recently scanned with over 7% IMF to ratio 144.

Note that both her dam and grandam are Pathfinders.

**47A** Heifer calf born 2/21/2007, tattoo 748, by BR MIDLAND. BW 80 lbs.

## 48 BLACKBIRD OF RR 4666

Calved: 3/19/2004 • Cow: 15103507 • Tattoo: 4666

EXAR Merit 216  
+14136787  
Dixie Erica of RR 7530

#B/R New Design 036  
Bon View Pride 664  
#E&B 1483 Scotchman 5041  
#Dixie Erica of RR 3506

HA 2041 Traveler 5016  
Blackbird of RR 1925  
14002838  
Blackbird of RR 5611

#HA Traveler 2041  
#+PB Forever Lady 3161  
#GDAR Quantum 1245  
Blackbird of RR 5217

BW EPD	WW EPD	YW EPD	SC EPD	MILK EPD	%IMF EPD	UREA EPD
-0.9	+30	+57		+24	+.23	+.07

4666 posted a nursing ratio of 105 on her first natural calf.

**48A** Heifer calf born 3/19/2007, tattoo 771, by SCHURRTOP MC 2500. BW 89 lbs.

## 49 RR BARBARAMERE 4717

Calved: 3/27/2004 • Cow: 14774991 • Tattoo: 4717

EXAR Merit 216  
+14136787  
Dixie Erica of RR 7530

#B/R New Design 036  
Bon View Pride 664  
#E&B 1483 Scotchman 5041  
#Dixie Erica of RR 3506

HA 2041 Traveler 5016  
RR Barbaramere 1835  
14002806  
RR Barbaramere 1413

#HA Traveler 2041  
#+PB Forever Lady 3161  
#Highwood Hero LCH  
Barbaramere 112 of PFB

BW EPD	WW EPD	YW EPD	SC EPD	MILK EPD	%IMF EPD	UREA EPD
+0.5	+29	+52	I +.40	+19	+.20	+.06

\$WEAN	\$FEEDLOT	\$GRID	\$BEEF
+23.62	+0.62	+19.65	+19.81

**49A** Heifer calf born 2/03/2007, tattoo 721, by SCHURRTOP MC 2500. BW 83 lbs.

## 50 J&J BARDOLENA 6110

Calved: 3/14/2006 • Cow: +15507121 • Tattoo: 6110

CW Dakota Gold 164  
14753559  
CW 686 Lucy Belle 044

#CA Future Direction 5321  
#New Trend 315 KG3  
Generic Bando 3117  
#CW 379 Lucy Erica 686

PF E161 Bardolena 3153  
+14428533  
GK Betsy Bardolena 323A

#Twin Valley Precision E161  
#GAR Precision 1680  
+WCC Blackcap C9  
Bardolene of Peak Dot 204R  
SPA Primeline Princess C401

BW EPD	WW EPD	YW EPD	SC EPD	MILK EPD	%IMF EPD	UREA EPD
I +3.6	I +46	I +83	I +.41	I +20	I +.20	I +.61

Strong carcass genetics in a heifer that scanned with a 106 ratio for IMF and 112 ratio for REA. Co-owned with A-Cross Ranch.

• Breeding information available sale day.

## 51 J&J 2971 QUEEN 605

Calved: 1/30/2006 • Cow: 15507084 • Tattoo: 605

EXAR New Look 2971  
+14230122  
N Bar Primrose 2424

#B/R New Design 036  
Bon View Pride 664  
#Emulation 31  
Primrose N Bar 9962

J&J Queen 414  
+14694435  
+J&J Queenie 9206

#+Northern Improvement 4480 GF  
#TC Stockman 365  
Blackcap of RR 5367  
#+A&B Yukon 7150  
C&C Queen 418

BW EPD	WW EPD	YW EPD	SC EPD	MILK EPD	%IMF EPD	UREA EPD
+2.9	+43	I +86		+21	I -.09	I +.35

A very nice show and brood cow prospect that descends from the Queen cow family. Scanned with a ratio of 111 for yearling ultrasound REA. The EXAR New Look daughters are making tremendous cows at J&J.

• Breeding information available sale day.

## 52 J&J RACQUEL 618

Calved: 2/05/2006 • Cow: +15507114 • Tattoo: 618

GAR Integrity  
+14222612  
GAR Precision 1019

#B/R New Design 036  
Bon View Pride 664  
#GAR Precision 1680  
#+GAR EXT 755

OSU 6079 Racquel 8176  
+13068513  
+DF Empress 6079

#N Bar Emulation EXT  
#Emulation N Bar 5522  
N Bar Primrose 2424  
#Pine Drive Big Sky  
KAF Miss Jetliner 641 1B4

BW EPD	WW EPD	YW EPD	SC EPD	MILK EPD	%IMF EPD	UREA EPD
I +0.8	I +32	I +66	I -.51	I +26	I +.20	I +.34

This heifer, produced by the high growth and high REA female OSU Racquel 8176, should make a solid cow.

• Breeding information available sale day.

## 53 J&J OAKLEAF 6102

Calved: 3/05/2006 • Cow: +15507117 • Tattoo: 6102

Schurrtop MC 2500  
14840227  
Schurrtop RS 1413 2153

#Papa Equator 2928  
Schurrtop 1483 9024  
Brooks Schurr Trend  
Ryans Schurrtop 2125

J&J Oakleaf 117  
+13844176  
WAF Rally Oakleaf 5144

#+A&B Yukon 7150  
#Kruggerand of Donamere 490  
+A&B Queen 4173  
#RR Traveler 5204  
#Rally Oakleaf 5142

BW EPD	WW EPD	YW EPD	SC EPD	MILK EPD	%IMF EPD	UREA EPD
I +3.7	I +45	I +91	I +.50	I +19	I -.01	I +.40

Check out the extra shape, width and muscle in this female who posted a 107 ratio for yearling REA. Co-owned with Jeff Mafi.

• Breeding information available sale day.



**54**

MCS

**DF Empress 6079 —  
Granddaughters of this  
million dollar producer sell!**



## 54 J&J EMPRESS 667

**Calved: 10/04/2006 • Cow: 15632803 • Tattoo: 667**

**BR Midland** 13898124  
**J&J Empress 345** 14433638  
 #Twin Valley Precision E161  
 BR Royal Lass 7036-19  
 +J&J Improvement 128  
 +KJ Empress 532  
 #GAR Precision 1680  
 +WCC Blackcap C9  
 #+SAF Neutron  
 #SAF Royal Lass 7036  
 #+Northern Improvement 4480 GF  
 C&C Queen 418  
 #Tehama Bando 155  
 +DF Empress 6079

BW EPD	WW EPD	YW EPD	SC EPD	MILK EPD	%IMF EPD	UREA EPD
I +0.8	I +37	I +74	I +.06	I +17	I +.29	I +.24

Descending from what is quite possibly the most dominant Angus cow family in breed history for producing show winners and complemented with Northern Improvement and Midland in her pedigree—two sires widely heralded for their ability to transmit outstanding phenotype, Empress 667 offers a unique combination of power, femininity and structural correctness.

- Sells open.

\$WEAN	\$FEEDLOT	\$GRID	\$BEEF
+23.12	+19.20	+21.55	+38.44

## 55 J&J EMPRESS 666

**Calved: 9/29/2006 • Cow: +15632802 • Tattoo: 666**

**EXAR New Look 2971** +14230122  
**EXAR Empress 7630** +12796814  
 #Bon View New Design 1407  
 N Bar Primrose 2424  
 #+Krugerrands Moneyline  
 +DF Empress 6079  
 #B/R New Design 036  
 Bon View Pride 664  
 #Emulation 31  
 Primrose N Bar 9962  
 #Krugerrand of Donamere 490  
 Ankony 5G00 Blackbird GC017  
 #Pine Drive Big Sky  
 KAF Miss Jetliner 641 1B4

BW EPD	WW EPD	YW EPD	SC EPD	MILK EPD	%IMF EPD	UREA EPD
I +2.2	I +42	I +80	I -.05	I +18	I -.02	I +.68

A big time cow prospect from the Empress cow family, 666 is stout, good bodied and very sound. Her dam, 7630, co-owned with EXAR, has been a consistent producer of great cattle. Warning: 666 likes to kick and is not recommended to junior exhibitors.

- Sells open.

\$WEAN	\$FEEDLOT	\$GRID	\$BEEF
+23.38	+23.33	+13.68	+34.04

# FALL SHOW & DONOR PROSPECTS



56

56

## J&J OAKLEAF 675

Calved: 9/30/2006 • Cow: +15632792 • Tattoo: 675

### Lots 56 and 57:

**GAR Integrity**  
+14222612

**J&J Oakleaf 117**  
+13844176

#Bon View New Design 1407  
GAR Precision 1019  
#+A&B Yukon 7150  
WAF Rally Oakleaf 5144

#B/R New Design 036  
Bon View Pride 664  
#GAR Precision 1680  
#+GAR EXT 755  
#Krugerrand of Donamere 490  
+A&B Queen 4173  
#RR Traveler 5204  
#Rally Oakleaf 5142

BW EPD	WW EPD	YW EPD	SC EPD	MILK EPD	%IMF EPD	UREA EPD
I +1.8	I +37	I +75	I +.04	I +25	I +.29	I +.26

These two flushmate senior heifer calves combine stoutness of hip and structural correctness with a "robust" body type. Both should make competitive show heifers and have the pedigree and genetics to become excellent cows. Co-owned with Jeff Mafi.

- Sell open.



57

57

## J&J OAKLEAF 676

Calved: 10/04/2006 • Cow: +15632793 • Tattoo: 676



**J&J Oakleaf 5106** — Purchased in our 2006 sale by Jason Manning from Mississippi for \$5,600, this flush sister to Lot 28 and maternal sister to Lots 56–58 was Supreme Champion Heifer over all breeds at the 2006 Mississippi State Fair and 2007 Dixie National junior shows!

58

## J&J OAKLEAF 673

Calved: 9/28/2006 • Cow: +15632790 • Tattoo: 673

**Gardens Prime Star**  
14740749

**J&J Oakleaf 117**  
+13844176

#N Bar Prime Time D806  
Green Garden Jilt C242 S1  
#+A&B Yukon 7150  
WAF Rally Oakleaf 5144

#Gardens Prime Time  
N Bar Miss Emulous A404  
#SS Traveler 6807 T510  
Green Garden Jilt 9242 S1  
#Krugerrand of Donamere 490  
+A&B Queen 4173  
#RR Traveler 5204  
#Rally Oakleaf 5142

BW EPD	WW EPD	YW EPD	SC EPD	MILK EPD	%IMF EPD	UREA EPD
I +2.1	I +41	I +83	I +.55	I +20	I +.53	I +.11

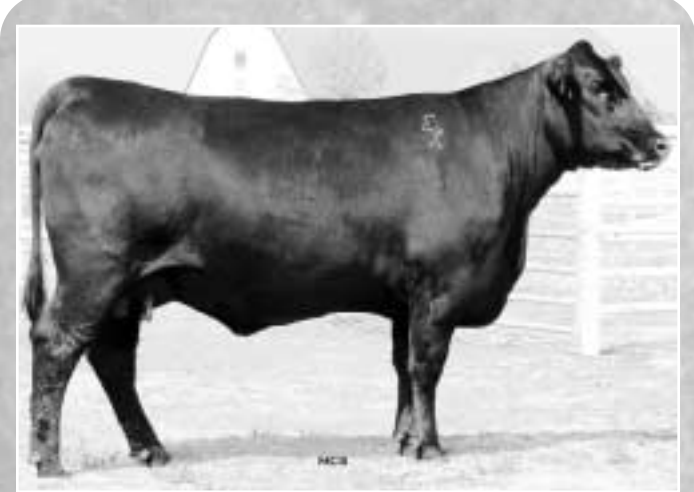
An extremely stylish, deep ribbed, fancy fronted heifer with high neck-to-shoulder attachment, 673 has a great deal of show ring potential. As importantly, her sire, Prime Star, is receiving much praise for his ability to sire cattle with strong body composition genetics. 673 descends from one of our foundation cow families and should prove to be a superb cow after her show career. Co-owned with Jeff Mafi.

- Sells open.



58





**EXAR Eriskay Q38 0441** — Maternal grandam of Lots 59–62. This former sale topper at Express Ranches has been influential in the J&J program.

## 59

### J&J ERISKAY 678

Calved: 10/21/2006 • Cow: +15632797 • Tattoo: 678

## 60

### J&J ERISKAY 679

Calved: 10/22/2006 • Cow: +15632798 • Tattoo: 679

## 61

### J&J ERISKAY 680

Calved: 10/23/2006 • Cow: +15632799 • Tattoo: 680

## 62

### J&J ERISKAY 681

Calved: 10/25/2006 • Cow: +15632800 • Tattoo: 681

#### Lots 59 through 62:

BR Midland 13898124	#Twin Valley Precision E161 BR Royal Lass 7036-19	#GAR Precision 1680 +WCC Blackcap C9 #+SAF Neutron #SAF Royal Lass 7036 #Bon View Bando 598 +SAF Royal Lass 1002 #Bon View New Design 1407 +VT Traveler 6807 Q38
J&J 5175 Eriskay 330 +14433628	#+SAF 598 Bando 5175 +EXAR Eriskay Q38 0441	

BW EPD	WW EPD	YW EPD	SC EPD	MILK EPD	%IMF EPD	UREA EPD
I +2.6	I +46	I +88		I +19	I +.56	I +.51

This group of flushmate sisters represents some of the strongest carcass genetics and \$Beef values in this sale offering. They descend from the famed Eriskay cow family. Their grandam is a former sale topping heifer from EXAR that has been a significant cow in our program. The dam of these heifers, J&J Eriskay 330, scanned with over 7% IMF as a yearling to ratio 133 while also ratiating 116 for REA. These heifers will make great cows and should be good show heifers along the way. Co-owned with John Freeman.

- Sell open.

\$WEAN	\$FEEDLOT	\$GRID	\$BEEF
+23.55	+29.99	+23.21	+44.10



# SALE SPONSORS



## *Special thanks to these J&J Sale sponsors:*

Farm Credit, Enid, Oklahoma

Fred Slater, (580) 231-0666

Stillwater Milling Company

Rob Bauter, (405) 372-2766



## **STILLWATER MILLING CO.**

(405) 372-2766

(800) 364-1671

Address:

502 East Sixth Street  
Stillwater, OK 74074

*Thanks for joining us at J&J!*



**J&J**  
CATTLE CO.  
Route 1, Box 8  
Orlando, OK 73073

FIRST CLASS  
U.S. POSTAGE  
**PAID**  
PERMIT #1541  
OKLA. CITY,  
OKLAHOMA

**First Class Mail**  
TIME-DATED: PLEASE DO NOT DELAY

[www.jandjcattle.com](http://www.jandjcattle.com)



LiveAuctions.TV

**SECOND ANNUAL PRODUCTION SALE • SATURDAY, MAY 12, 2007**