

J&J CATTLE CO.

First Annual
Production Sale

Saturday, May 13, 2006

12 Noon • At the Ranch

Orlando, Oklahoma

63 Angus Lots

WELCOME!



Mark & Brenda Johnson, Sydney & Charley
Ken & June Jackson
Route 1, Box 8, Orlando, OK 73073
(405) 880-1902, Cell
(580) 455-2256, Home & Fax
info@jandjcattle.com, E-mail
www.jandjcattle.com, Web site

Dear Friends:

We would like to extend a personal invitation to each of you to be with us on Saturday, May 13, 2006, for our first annual J&J Production Sale at the ranch near Orlando, Oklahoma. We look forward to this sale with much excitement, as it will offer the best of our program, and hope that you will be able to join us.

These cattle not only represent the genetics on which we have built our operation but also many of the greatest cow families in the Angus breed. We are selling a very productive set of cows and the very best of our 2005 fall-born heifers and spring 2005 calf crop. Many of the females selling are full sibs and are evidence of how we built our operation. We started with an elite group of donors in the 1990s and through the use of embryo transplant, culling the inferior and marketing very few females over the years have developed the cow herd we now have. The cattle not only read well on paper in regard to pedigrees and breed-leading EPDs, but as importantly to us, they represent the visual characteristics of productive, functional cattle with growth, genuine composition and quality.

Special thanks to Larue Switzer of A-Cross Ranch for a very nice consignment of six spring-calving pairs, as well as to Matt and Eddie Sims for their expertise in helping us prepare for the sale.

The cattle can be viewed anytime between now and May 13. Please call to let us know when you are coming. We look forward to the opportunity to show you the cattle and answer any questions you may have. Welcome to J&J!

Sincerely,
Mark
Mark Johnson

Ken
Ken Jackson

Schedule of Events

Friday, May 12, 2006

Sale cattle on display . . . Food and beverages available

Saturday, May 13, 2006

7:30 a.m. — Coffee, juice and pastries

8:00 a.m. — Cattle on display

10:45 a.m. — Lunch served

12:00 noon — First Annual J&J Cattle Company Production Sale



ABOUT THE SALE

Sale Location

The sale will be held at J&J Cattle Company, located on the south side of State Highway 51, just 1-1/2 miles west of Interstate 35 (Exit 174). Look for our signs and the red barn on top of the hill.

Motel Accommodations

A block of rooms has been reserved at the Sleep Inn, Guthrie, Oklahoma, located 17 miles south of the ranch at Exit 157 on I-35. Phone (405) 260-1400 by Friday, May 5, to secure a room in your name. Please mention that you are attending the J&J sale to receive the special rate. After May 5, rooms will be available on a first-come, first-served basis.

Other motels in the area:

Best Western/Cherokee Strip Motel, Perry, Oklahoma, (580) 336-2218 (16 miles north).

Holiday Inn, Stillwater, Oklahoma, (405) 372-0800 (17 miles east).

Air Transportation

Will Rogers World Airport in Oklahoma City is 45 minutes from the ranch and is served by most major airlines. For assistance with travel arrangements, please call Brenda Johnson, (405) 880-5887.

Special Sale Guests

- Scott Dewald, Exec. Vice President, Oklahoma Cattlemen's Assn.
- Jot Hartley, Vice President, American Angus Assn.
- Jarold Callahan, Director, American Angus Assn.
- Al Williams, President, Oklahoma Angus Assn.
- Chuck Stewart, Vice President, Oklahoma Angus Assn.
- Dr. Robert Whitson, Vice President, Dean and Director, OSU College of Agricultural Sciences and Natural Resources
- Dr. Robert Totusek, Head Emeritus, OSU Department of Animal Science
- Dr. Donald Wagner, Head, OSU Department of Animal Science
- Ben Fox, Manager, OSU Purebred Beef Herd

Sale Staff

- Eddie C. Sims, Auctioneer, (580) 595-1626
- Matt Caldwell, *Angus Journal*, (785) 228-1364
- Doug Paul, *The Stock Exchange*, (405) 820-3982
- Robbie Schacher, *Weekly Livestock Reporter*, (817) 219-0102
- A.J. Smith, *Oklahoma Cowman*, (405) 235-4391
- Juston Stelzer, *The Cattleman*, (817) 992-7059

Sale Consultants

- Jeff Mafi, (517) 420-6800
- Cindy Pribil, (405) 853-5232
- William Walther, (405) 612-7554

Sale Managers

MCS AUCTION
AND SPECIALIZED MARKETING

Matt C. Sims Ph: (405) 348-3955
1701 NW 183rd St. Fax: (405) 348-7090
Edmond, OK 73003 Cell: (405) 641-6081
E-mail: mattcsims@aol.com

NATIONAL CATTLE SERVICES INC.

P.O. Box 170, Elgin, OK 73538
(580) 492-4590 • Fax 492-4594
simsncs@aol.com
www.nationalcattle.com

Absentee Bids

If you would like to place a bid on any lot but will not be able to be with us sale day, please direct your phone bid to the ranch, the sale manager, or any of the sale staff or consultants listed above.

Livestock Transportation

Livestock haulers believed to be reliable will be available to assist you in shipping your purchases. We recommend that livestock mortality insurance be obtained on lots purchased, which will be available at the clerk's desk.

Sale Terms and Conditions

See page 30.

Herd Health

All cattle will be accompanied by proper health certificates for immediate interstate shipment. All calves are wormed and vaccinated with a 7-way Clostridial, 4-way for BVD, IBR, PI3 and BRSV, and Pasteurella Bacterin Toxoid by three months of age and again at weaning. All females of age are officially calthood vaccinated. Yearling heifers and the cow herd are wormed and vaccinated twice annually with a 7-way Clostridial, 4-way for BVD, IBR, PI3 and BRSV, and Lepto/Vibrio with Spirovac®. All cattle selling are up to date on vaccinations and worming.

Breeding Information

The yearling heifers and most of the spring-calving cows will have been bred A.I. by sale day but are not being sold as safe in calf. All fall-calving cows are being sold as safe in calf. An updated breeding/calving report will be available sale day. Announcements made from the auction block will take precedence over all printed material.

Acknowledgements

Photography—Matt Sims, (405) 641-6081
Catalog—Produced by Southwest TypeStyles, (405) 222-3089

SALE DAY PHONES:

- Mark Johnson cell (405) 880-1902
- Matt Sims cell (405) 641-6081
- Eddie Sims cell (580) 595-1626

GUEST CONSIGNOR:

- A-CROSS RANCH
- P. O. Box 765, Elk City, OK 73648
- Larue Switzer, owner • Bill Lackey, manager
- Cindy Pribil, herd consultant
- (405) 853-5232, cell • (405) 853-6544, home

SERVICE SIRES REPRESENTED



BR Midland

CALVED: 12/30/2000 • BULL: 13898124
 #GAR Precision 1680 #Tehama Bando 155
 Twin Valley Precision E161 9J9 GAR 856
 #12346200 +WCC Blackcap C9 #SS Traveler 6T6
 Premier Blackcap 6276A
 #+SAF Neutron #VDAR New Trend 315
 BR Royal Lass 7036-19 SAF Duchess 9029
 13253905 #SAF Royal Lass 7036 #+SVF Hi Road
 +SAF Royal Lass 4031

BW EPD	WW EPD	YW EPD	SC EPD	MILK EPD	%IMF EPD	UREA EPD
+1.6	+46	+87	+26	+13	+77	+52
SWEAN	SFEEDLOT	SGRID	SBEFF			
+21.23	+28.30	+27.93	+51.63			

EXG Midnight N657 R3

CALVED: 3/02/2003 • BULL: +14382607
 #Twin Valley Precision E161 #GAR Precision 1680
 BR Midland 13898124 +WCC Blackcap C9
 BR Royal Lass 7036-19 #+SAF Neutron
 #SAF Royal Lass 7036
 #GDAR Executive 727 #+PJM Power 291
 VAR Forever Lady 4304 GDAR Rachel 5115
 12135313 #Blackcap Lady 384 GDAR #QAS Traveler 23-4
 Lady Forever 5150 GDAR

BW EPD	WW EPD	YW EPD	SC EPD	MILK EPD	%IMF EPD	UREA EPD
+2.7	+47	+86	+51	+17	+25	+69
SWEAN	SFEEDLOT	SGRID	SBEFF			
+23.54	+26.91	+21.28	+43.54			

J&J herd sire owned with Roll-
 ing R3 Ranch and Turner Farms.

Bon View New Design 1407

CALVED: 2/23/1997 • BULL: #12783540
 #VDAR New Trend 315 #AAR New Trend
 B/R New Design 036 #VDAR Lucy 704
 #11418151 B/R Blackcap Empress 76 #K&K Top Gun
 +QLC A70 Blkcp Empress E43T
 #+GAR Sleep Easy 1009 #Tehama Bando 155
 Bon View Pride 664 Blackclass GAR 103
 12139985 #Bon View Pride 1551 Bon View Paragon 2108
 Bon View Pride 639

BW EPD	WW EPD	YW EPD	SC EPD	MILK EPD	%IMF EPD	UREA EPD
+0.0	+43	+91	+12	+35	+56	+47
SWEAN	SFEEDLOT	SGRID	SBEFF			
+26.46	+33.53	+27.38	+48.38			

GAR Integrity

CALVED: 8/16/2002 • BULL: +14222612
 #B/R New Design 036 #VDAR New Trend 315
 Bon View New Design 1407 B/R Blackcap Empress 76
 #12783540 Bon View Pride 664 #+GAR Sleep Easy 1009
 #Bon View Pride 1551
 #GAR Precision 1680 #Tehama Bando 155
 GAR Precision 1019 9J9 GAR 856
 13395363 #+GAR EXT 755 #N Bar Emulation EXT
 GAR Traveler 2421

BW EPD	WW EPD	YW EPD	SC EPD	MILK EPD	%IMF EPD	UREA EPD
+0.7	+30	+72	-.30	+30	+76	+75
SWEAN	SFEEDLOT	SGRID	SBEFF			
+21.61	+19.58	+32.74	+48.27			

SAV 8180 Traveler 004

CALVED: 1/01/2000 • BULL: 13512009
 #GDAR Traveler 71 #Traveler 1148 GDAR
 Sitz Traveler 8180 GDAR Miss Blackcap 567
 #11367940 Sitz Everelda Entense 1137 #GDAR Rainmaker 340
 Sitz Everelda Entense 2335
 #AAR New Trend #VDAR Shoshone 548
 Boyd Forever Lady 8003 Donna AAR 74
 +13050778 SVF Forever Lady 57D #+Leachman Right Time
 +SVF Forever Lady 1128

BW EPD	WW EPD	YW EPD	SC EPD	MILK EPD	%IMF EPD	UREA EPD
+3.2	+61	+112	+1.19	+27	-.06	+48
SWEAN	SFEEDLOT	SGRID	SBEFF			
+25.89	+48.12	+6.32	+37.79			

Schurrtop MC 2500

CALVED: 2/13/2004 • BULL: 14840227
 #Papa Equator 2928 #+Papa Power 096
 Schurrtop MC 13980842 #Papa Envio Blackbird 8849
 Schurrtop 1483 9024 #RR 9440 Scotch Cap 1483
 Schurrtop 705Y 7027
 Brooks Schurr Trend #VDAR New Trend 315
 Schurrtop RS 1413 2153 Duke Girl 8310 HWB
 13159817 Ryans Schurrtop 2125 Schurrtop Hi Gain
 Valedictorian KG 21

BW EPD	WW EPD	YW EPD	SC EPD	MILK EPD	%IMF EPD	UREA EPD
+2.0	+49	+100	+50	+17	+06	+70
SWEAN	SFEEDLOT	SGRID	SBEFF			
+22.08	+40.40	+17.41	+46.60			

E&B 1483 Scotchman 5041

CALVED: 1/13/1995 • BULL: #12413945
 #RR Scotchcap 9440 #Scotch Cap
 RR 9440 Scotch Cap 1483 Blackcap of RR 5367
 #11620571 Eriskay of Rollin Rock 8211 #QAS Traveler 23-4
 Eriskay of Rollin Rock 6365
 E&B Traveler 183 #QAS Traveler 23-4
 Lady 183 Traveler 334 #Lady Skylar 1075
 11966437 Lady Stacker B23 #CH Stacker 7040
 E&B Lady Viking 0868

BW EPD	WW EPD	YW EPD	SC EPD	MILK EPD	%IMF EPD	UREA EPD
+2.7	+30	+71	+32	+10	+07	+24
SWEAN	SFEEDLOT	SGRID	SBEFF			
+13.70	+18.60	+12.75	+29.67			

CW Dakota Gold 164

CALVED: 2/08/2004 • BULL: 14753559
 CA Future Direction 5321 #GAR Precision 1680
 KG Dakota 14230973 CA Miss Power Fix 308
 #New Trend 315 KG 3 #VDAR New Trend 315
 RAR Erica 152
 Generic Bando 3117 #Tehama Bando 155
 CW 686 Lucy Belle 044 Landmark Belle 0252
 13539105 #CW 379 Lucy Erica 686 Basin Traveler B4
 CW Lucy Burgess 379

BW EPD	WW EPD	YW EPD	SC EPD	MILK EPD	%IMF EPD	UREA EPD
+2.8	+41	+74	+53	+23	+12	+71
SWEAN	SFEEDLOT	SGRID	SBEFF			
+23.79	+17.37	+16.38	+32.85			

EXAR Lutton 1831

CALVED: 9/14/2001 • BULL: 14035047
 #TC Stockman 365 #TC Stockman
 Northern Improvement 4480 GF TC Pride 0014
 #+13054003 Blackcap of RR 5367 RR Vantage 3352
 Blackcap of RR 0238
 #+A&B Yukon 7150 #Krugerrand of Donamere 490
 EXAR Saras Dream 9809 +A&B Queen 4173
 13383188 +Saras Dream #N Bar Emulation EXT
 +Champion Hill Sara 656

BW EPD	WW EPD	YW EPD	SC EPD	MILK EPD	%IMF EPD	UREA EPD
+2.9	+50	+96	-.06	+21	+19	+07
SWEAN	SFEEDLOT	SGRID	SBEFF			
+22.37	+35.87	+14.34	+41.45			

OSU A-Cross Impact 3145

CALVED: 1/27/2003 • BULL: 14446801
 #+Northern Improvement 4480 GF #TC Stockman 365
 EXAR Sudden Impact 1537 Blackcap of RR 5367
 13806056 +BLR Blushing Pride 9097 #GDAR Traveler 71
 +Blushing Pride of OSU
 #RR Scotchcap 9440 #Scotch Cap
 PAF 952 9440 9568 Blackcap of RR 5367
 13336928 Deer Creek EXT 952 #N Bar Emulation EXT
 Traveler PC 226

BW EPD	WW EPD	YW EPD	SC EPD	MILK EPD	%IMF EPD	UREA EPD
+2.2	+50	+85		+23	+03	-.11
SWEAN	SFEEDLOT	SGRID	SBEFF			
+27.58	+24.76	+8.46	+30.68			

Selling an elite herd sire prospect and his flush sisters!



J&J Double Take 550 — Lot 1

1

J&J Double Take 550

CALVED: 3/02/2005 • BULL: +15132206 • TATTOO: 550

	%IMF EPD	UREA EPD	SWEAN	SFEEDLOT	SGRID	SBEFF
S:	+0.21	+0.79	+26.88	+40.47	+19.15	+47.28
D:	+0.18	+0.24	+20.86	+27.30	+14.65	+34.72

The best bull we have ever raised at J&J and a genuine herd sire prospect! Double Take has tremendous bone, depth of heel and natural base width combined with a flawless hip and hind leg structure, big scrotal and clean sheath. He recorded an adjusted birth weight of 81 lbs., an adjusted weaning weight of 803 lbs. and scanned with 4.3%IMF and a 15.4 square inch ribeye area at an adjusted yearling weight of 1424 lbs. as a single contemporary. This powerful young bull offers a moderate Birth Weight EPD with Weaning and Yearling Weight EPDs in the top 5% of non-parent Angus bulls.

- Selling one-half interest, full possession. J&J will retain a one-half semen interest only.

Lots 1, 2A, 2B & 2C

EXAR New Look 2971 +14230122	#Bon View New Design 1407 N Bar Primrose 2424	B/R New Design 036 Bon View Pride 664 #Emulation 31 Primrose N Bar 9962
PF E161 Bardolena 3153 +14428533	#Twin Valley Precision E161 GK Betsy Bardolena 323A	#GAR Precision 1680 +WCC Blackcap C9 Bardolene of Peak Dot 204R SPA Primeline Princess C401

BW EPD	WW EPD	YW EPD	SC EPD	MILK EPD
+2.9	+50	+94		+23

“... the most impressive flush we have raised to date at J&J.”

DOUBLE TAKE'S FLUSH SISTERS



J&J
Bardolena 543 —
Lot 2A

2A

J&J Bardolena 543

CALVED: 2/25/2005 • COW: +15132203 • TATTOO: 543

%IMF EPD	UREA EPD	\$WEAN	\$FEEDLOT	\$GRID	\$BEEF
1 +.12	1 +.38	+23.89	+33.82	+13.50	+40.12

Not only a donor in the making but also the best February show heifer prospect in this sale offering.

- Breeding information available sale day.



J&J Bardolena 546 — Lot 2B

2B

J&J Bardolena 546

CALVED: 2/26/2005 • COW: +15132204 • TATTOO: 546

%IMF EPD	UREA EPD	\$WEAN	\$FEEDLOT	\$GRID	\$BEEF
1 +.09	1 +.35	+23.89	+33.82	+12.55	+39.17

- Breeding information available sale day.

2C

J&J Bardolena 519

CALVED: 2/06/2005 • COW: +15132199 • TATTOO: 519

%IMF EPD	UREA EPD	\$WEAN	\$FEEDLOT	\$GRID	\$BEEF
1 +.18	1 +.43	+23.89	+33.82	+17.09	+43.71

- Breeding information available sale day.

These three flush sisters to Double Take have been favorites of ours and our visitors since last spring. They offer big time potential as show heifers and donor cows. Their pedigree ties together several of the breed's greatest family lines with outcross genetics on the bottom side . . . sired by New Look, 1407's greatest son, produced by N Bar Primrose 2424, the dam of EXT . . . produced by a direct daughter of GK Betsy Bardolena 323A, the now-deceased donor made famous by Pollard Farms and Glen Klippenstein.

The dam of Lots 1 and 2 is a powerful young donor with excellent udder structure and teat quality who posted a nursing ratio of 108 on her first natural calf. 3153's ultrasound ratios on the full sibs are 8@102 for both IMF and REA.

The full sibs represented by Lots 1 and 2 are the most impressive flush we have raised to date at J&J.



MCS

J&J Blackbird 405 — Lot 3



EXAR Blackbird 2432 —

Maternal sister to Lots 3 & 5; full sister to Lot 4

3

J&J Blackbird 405

CALVED: 1/24/2004 • COW: +14694437 • TATTOO: 405

BR Midland 13898124	#Twin Valley Precision E161 BR Royal Lass 7036-19	#GAR Precision 1680 +WCC Blackcap C9 #+SAF Neutron #SAF Royal Lass 7036
PAF Blackbird 6665 12829409	#N Bar Emulation EXT PAF Blackbird 4170	#Emulation N Bar 5522 N Bar Primrose 2424 #Tehama Bando 155 PAF Lady Cap 2028

BW EPD	WW EPD	YW EPD	SC EPD	MILK EPD	%IMF EPD	UREA EPD
+1.4	+39	+77	-.21	+13	+.42	+.28

A big ribbed, big hipped two year old who ranks in the top 1% of active dams for IMF and the top 15% for UREA. Sired by BR Midland, who records the third highest IMF EPD among proven sires in the current NSE report, and produced by a superb EXT daughter bred at Pfeiffer Farms whose first three offspring evaluated by ultrasound posted average ratios of 112 for IMF and 104 for REA. 405 is a maternal sister to several past sale features at Express Ranches, where a maternal sister (and full sib to Lot 4) sold for \$22,000 to Ratcliff Ranch in the 2005 "Big Event" Sale. As a yearling, 405 posted ratios of 114 for IMF and 108 for REA.

SWEAN	SPEEDLOT	SGRID	SBEEF
+21.83	+21.06	+19.56	+38.35

• Sells open, ready to breed or flush.

LOT 3A: Bull calf born 2/03/2006, tattoo 611, by BON VIEW NEW DESIGN 1407. BW 72 lbs. J&J will retain a one-third semen interest in 611.



J&J 1407 Blackbird 435
— Lot 4



J&J Blackbird 344
— Lot 5

4

J&J 1407 Blackbird 435

CALVED: 3/03/2004 • COW: +14694470 • TATTOO: 435

#B/R New Design 036	#VDAR New Trend 315
Bon View New Design 1407	B/R Blackcap Empress 76
#12783540	#+GAR Sleep Easy 1009
Bon View Pride 664	#Bon View Pride 1551
#N Bar Emulation EXT	#Emulation N Bar 5522
PAF Blackbird 6665	N Bar Primrose 2424
12829409	#Tehama Bando 155
PAF Blackbird 4170	PAF Lady Cap 2028

BW EPD	WW EPD	YW EPD	SC EPD	MILK EPD	%IMF EPD	UREA EPD
I +0.6	I +38	I +79	I -.28	I +24	+ .30	+ .17

\$WEAN	\$FEEDLOT	\$GRID	\$BEEF
+24.12	+23.42	+19.06	+37.67

A feminine two year old sired by the Pathfinder Sire New Design 1407, 435 is a long patterned, good bodied, productive looking female with an excellent udder who ranks in the best 4% of active dams for IMF. Produced by a superb EXT daughter bred at Pfeiffer Farms, 435 is a full sister to EXAR Blackbird 2432 (pictured opposite), who sold for \$22,000 to Ratcliff Ranch in the 2005 "Big Event" at Express. As a yearling, 435 posted ratios of 104 for IMF and 100 for REA.

• Sells open, ready to breed or flush.

LOT 4A: Heifer calf born 2/10/2006, tattoo 627, by BR MIDLAND. BW 62 lbs.

5

J&J Blackbird 344

CALVED: 3/11/2003 • COW: +14433637 • TATTOO: 344

#Twin Valley Precision E161	#GAR Precision 1680
BR Midland	+WCC Blackcap C9
13898124	#+SAF Neutron
BR Royal Lass 7036-19	#SAF Royal Lass 7036
#N Bar Emulation EXT	#Emulation N Bar 5522
PAF Blackbird 6665	N Bar Primrose 2424
12829409	#Tehama Bando 155
PAF Blackbird 4170	PAF Lady Cap 2028

BW EPD	WW EPD	YW EPD	SC EPD	MILK EPD	%IMF EPD	UREA EPD
I +1.4	I +39	I +77	I -.21	I +13	+ .31	-.02

\$WEAN	\$FEEDLOT	\$GRID	\$BEEF
+21.83	+21.06	+17.86	+36.62

Our oldest daughter of BR Midland, 344 is a correctly made three year old who has an outstanding heifer calf at side. A full sister to the Lot 3 female and maternal sister to Lot 4.

LOT 5A: Heifer calf born 3/02/2006, tattoo 640, by CW DAKOTA GOLD 164. BW 73 lbs.



J&J Jilt 4134 —
Lot 6

6

J&J Jilt 4134

CALVED: 1/15/2004 • COW: 14656328 • TATTOO: 4134

#B/R New Design 036	#VDAR New Trend 315
Bon View New Design 1407	B/R Blackcap Empress 76
#12783540	Bon View Pride 664
	#+GAR Sleep Easy 1009
	#Bon View Pride 1551
#E&B 1483 Scotchman 5041	#RR 9440 Scotch Cap 1483
OSU Jilt 2103	Lady 183 Traveler 334
14127428	#+OSU 6T6 Ultra
	+ROR Jilt 147V

BW EPD	WW EPD	YW EPD	SC EPD	MILK EPD	%IMF EPD	UREA EPD
+2.3	+41	+80		+24	+2.6	+1.8

Lots 6 and 6A represent a great opportunity to purchase an outstanding pair of females! 4134 descends from the famous Jilt cow family that traces back to Summitcrest. She ranks in the best 5% of active dams for IMF, the best 25% for UREA and posts a nice Birth-to-Yearling EPD spread. She is well balanced, has a huge rib cage and a great udder and is very correct through her hip and hind leg.

Her heifer calf is even better! Extra correct, lots of eye appeal with added stoutness and power. The Jilt cow family has been a really good one for the Oklahoma State University purebred Angus herd because each generation of females is better than the last. A very nice pair for those who like to look at cattle.

SWEAN	SPEEDLOT	SGRID	SBEEF
+23.39	+23.26	+18.07	+36.84

LOT 6A: Heifer calf born 3/02/2006, tattoo 639, by BR MIDLAND. BW 67 lbs.



OSU Jilt 2103 — Lot 7

7

OSU Jilt 2103

CALVED: 1/09/2002 • COW: 14127428 • TATTOO: 2103

#RR 9440 Scotch Cap 1483	#RR Scotchcap 9440
E&B 1483 Scotchman 5041	Eriskay of Rollin Rock 8211
#12413945	E&B Traveler 183
Lady 183 Traveler 334	Lady Stacker B23
	#+OSU 6T6 Ultra
OSU Ultress 5125	#SS Traveler 6T6
12401043	+DF Empress 6079
	+Gunston Hombre
+ROR Jilt 147V	Summitcrest Jilt M113

BW EPD	WW EPD	YW EPD	SC EPD	MILK EPD	%IMF EPD	UREA EPD
+3.7	+35	+66		+13	-.06	+0.9

This cow has done a tremendous job for J&J and is included in the sale offering only because she has been a prolific egg producer. She offers a different pedigree from many of today's popular lines and has been a model cow in production. Her first two calves averaged a 96 ratio at birth and 101 at weaning; her first eight evaluated by ultrasound posted an average ratio of 102 for IMF. Purchased as a two year old as the high selling cow/calf pair from the 2004 Oklahoma State University Cowboy Classic with the cow selling as Lot 6 at side.

SWEAN	SPEEDLOT	SGRID	SBEEF
+17.76	+11.90	+9.32	+21.43

LOT 7A: Bull calf born 2/04/2006, tattoo 614, by CW DAKOTA GOLD 164. BW 85 lbs.



J&J 5175 Eriskay 342 — Lot 8

8

J&J 5175 Eriskay 342

CALVED: 3/02/2003 • COW: +14433632 • TATTOO: 342

#Bon View Bando 598	#Tehama Bando 155
SAF 598 Bando 5175	#Bon View Dora 56
#+12350821	+SAF Royal Lass 1002
	#VDAR New Trend 315
	+SAF Royal Lass 6089
#Bon View New Design 1407	#B/R New Design 036
EXAR Eriskay Q38 0441	Bon View Pride 664
+13554882	#DHD Traveler 6807
+VT Traveler 6807 Q38	Eriskay of Rollin Rock 5202

BW EPD	WW EPD	YW EPD	SC EPD	MILK EPD	%IMF EPD	UREA EPD
+2.6	+45	+91	1 +.72	+27	+0.29	+0.32

SWEAN	SPEEDLOT	SGRID	SBEEF
+22.83	+32.74	+17.83	+42.47

Eriskay 342 descends from the famous Eriskay cow family of Rollin Rock. She is a nice three year old sired by Bando 5175 and produced by the high selling bred heifer out of the 2001 Express "Big Event" Sale. A full sister to the dam of 342, EXAR Eriskay Q38 4479, was the high selling female at the 2004 "Big Event." This female sells with a heifer calf at side by Traveler 004. As a yearling, Eriskay 342 posted ratios of 104 and 103 for IMF and REA, respectively, and balances a BW EPD of +2.6 with a Yearling EPD that ranks in the top 2% of current Angus dams. She also ranks in the top 4% of active dams for IMF and the top 10% for UREA.

LOT 8A: Heifer calf born 2/04/2006, tattoo 615, by SAV 8180 TRAVELER 004. BW 65 lbs.



Lots 9, 10, 11 and 12 represent the influence of OSU 6079 Racquel 8176, the cow we consider to be the best daughter of DF Empress 6079, the immortal producer of over \$1.5 million worth of progeny. J&J purchased half interest in OSU 6079 Racquel 8176 in the 1999 OSU Cowboy Classic. 8176's production ratios on two natural calves are 101 for birth, 131 for weaning and 117 at yearling. Her 39 offspring evaluated by ultrasound have averaged 107 for IMF and 104 for REA ratios. We are excited to be able to offer several of these genetic treasures in our first J&J sale!

J&J 1680 Racquel 534 — Lot 9

9

J&J 1680 Racquel 534

CALVED: 2/22/2005 • COW: +15134194 • TATTOO: 534

#Tehama Bando 155	#Band 234 of Ideal 3163
GAR Precision 1680	Tehama Blackcap G373
#11520398	#Rito 9J9 of B156 7126
9J9 GAR 856	Blackbird GAR 833
#N Bar Emulation EXT	#Emulation N Bar 5522
OSU 6079 Racquel 8176	N Bar Primrose 2424
+13068513	#Pine Drive Big Sky
+DF Empress 6079	KAF Miss Jetliner 641 1B4

BW EPD	WW EPD	YW EPD	SC EPD	MILK EPD	%IMF EPD	UREA EPD
+2.3	+38	+77	-.73	+23	+32	+67

This direct daughter of 8176 sired by the immortal GAR Precision 1680 offers elite production and carcass genetics. 534 posted ratios of 103 for IMF and 109 for REA to rank in the best 10% and 3% of non-parent females for EPDs of these respective traits. Descending from a pedigree with proven earning potential and an outcross to the New Design 036 line, 534 offers a very unique combination of genetic potential with structural correctness, stoutness and a look of productivity.

\$WEAN	\$FEEDLOT	\$GRID	\$BEEF
+22.20	+21.44	+24.52	+43.73

• Breeding information available sale day.



OSU Racquel 8176 — Dam of Lots 9, 10, 11 & 12

10

J&J Racquel 589

CALVED: 9/21/2005 • COW: +15294510 • TATTOO: 589

#RR 9440 Scotch Cap 1483	#RR Scotchcap 9440
E&B 1483 Scotchman 5041	Eriskay of Rollin Rock 8211
#12413945	E&B Traveler 183
Lady 183 Traveler 334	Lady Stacker B23
#N Bar Emulation EXT	#Emulation N Bar 5522
OSU 6079 Racquel 8176	N Bar Primrose 2424
+13068513	#Pine Drive Big Sky
+DF Empress 6079	KAF Miss Jetliner 641 1B4

BW EPD	WW EPD	YW EPD	SC EPD	MILK EPD	%IMF EPD	UREA EPD
+2.8	+38	+76	-.08	+18	+10	+41

Racquel 589 is a straight lined, attractive profiling senior heifer calf sired by E&B 1483 Scotchman 5041. Our 5041 daughters have been model cows in production that are moderate framed, big ribbed and deep flanked. This heifer has show potential and should make an outstanding cow.

\$WEAN	\$FEEDLOT	\$GRID	\$BEEF
+20.19	+20.46	+12.93	+31.64

• Sells open.



GB New Design 211 — Lot 11

12

GB New Design 208

CALVED: 2/15/2002 • COW: +14317500 • TATTOO: 208

#B/R New Design 036 #VDAR New Trend 315
 Bon View New Design 1407 B/R Blackcap Empress 76
 #12783540 Bon View Pride 664 #+GAR Sleep Easy 1009
 #Bon View Pride 1551
 #N Bar Emulation EXT #Emulation N Bar 5522
 OSU 6079 Racquel 8176 N Bar Primrose 2424
 +13068513 +DF Empress 6079 #Pine Drive Big Sky
 KAF Miss Jetliner 641 1B4

BW EPD	WW EPD	YW EPD	SC EPD	MILK EPD	%IMF EPD	UREA EPD
+0.9	+43	+84	-1.18	+28	+3.5	+5.7

SWEAN	\$FEEDLOT	\$GRID	\$BEEF
+26.11	+26.46	+22.30	+43.20

This long bodied, long hipped cow has done a very good job at J&J. As evidence, take a look at her daughters selling as Lots 12B and 12C. 208 scanned with over 7.0% IMF as a yearling to ratio 106 and had a REA ratio of 107. She ranks in the best 2% of active dams for IMF and best 1% for UREA.

LOT 12A: Bull calf born 3/04/2006, tattoo 642, by SAV 8180 TRAVELER 004. BW 75 lbs.



J&J Racquel 594 — Lot 12B

12B

J&J Racquel 594

CALVED: 11/02/2005 • COW: +15286961 • TATTOO: 594

#Twin Valley Precision E161 #GAR Precision 1680
 BR Midland 13898124 +WCC Blackcap C9
 BR Royal Lass 7036-19 #+SAF Neutron
 #SAF Royal Lass 7036
 #Bon View New Design 1407 #B/R New Design 036
 GB New Design 208 Bon View Pride 664
 +14317500 +OSU 6079 Racquel 8176 #N Bar Emulation EXT
 +DF Empress 6079

BW EPD	WW EPD	YW EPD	SC EPD	MILK EPD	%IMF EPD	UREA EPD
+1.3	+45	+86		+21	+5.6	+5.5

SWEAN	\$FEEDLOT	\$GRID	\$BEEF
+25.44	+27.69	+22.68	+44.05

This November senior heifer calf has tremendous potential as a show heifer and donor. Long patterned, good structured and very fancy with high end production and carcass genetics, she descends from a cow family famous for producing herd bulls and is sired by BR Midland, who records the third highest IMF EPD among active Angus sires.

• Sells open.

BW EPD	WW EPD	YW EPD	SC EPD	MILK EPD	%IMF EPD	UREA EPD
+0.6	+43	+84		+22	+3.4	+5.9

SWEAN	\$FEEDLOT	\$GRID	\$BEEF
+25.57	+26.46	+23.76	+45.81

Racquel 571 is a nice cow prospect whose sire has done a great job as a herd bull at J&J. Midnight N657 R3 is a full sib to EXG Forever Lady 5309 R3, the high selling heifer from the 2005 "Big Event" Sale at Express who has compiled a dominant show record at the American Royal, Louisville, Denver and Fort Worth this past year. 571 posted ratios of 106 and 101 for yearling IMF and REA, respectively.

• Breeding information available sale day.

11

GB New Design 211

CALVED: 2/28/2002 • COW: +14317501 • TATTOO: 211

#B/R New Design 036 #VDAR New Trend 315
 Bon View New Design 1407 B/R Blackcap Empress 76
 #12783540 Bon View Pride 664 #+GAR Sleep Easy 1009
 #Bon View Pride 1551
 #N Bar Emulation EXT #Emulation N Bar 5522
 OSU 6079 Racquel 8176 N Bar Primrose 2424
 +13068513 +DF Empress 6079 #Pine Drive Big Sky
 KAF Miss Jetliner 641 1B4

BW EPD	WW EPD	YW EPD	SC EPD	MILK EPD	%IMF EPD	UREA EPD
+1.0	+41	+81	-1.18	+25	+5.3	+5.5

SWEAN	\$FEEDLOT	\$GRID	\$BEEF
+25.19	+24.25	+27.06	+46.45

This deep ribbed cow scanned with over 9.5% IMF to ratio 140 for IMF combined with a ratio of 104 for REA as a yearling. The mating of Pathfinder Sire New Design 1407 to Racquel 8176 resulted in an outstanding set of full sibs for Chad Gordon of Gordon Beef, Fletcher, Oklahoma, after he purchased the right to flush 8176 in the 2001 Cowboy Classic; J&J thanks Chad for offering us the opportunity to purchase the females selling as Lots 11 and 12 as bred heifers. 211 ranks in the best 2% of current Angus dams for both IMF and UREA EPDs.

LOT 11A: Bull calf born 2/19/2006, tattoo 631, by SCHURRTOP MC 2500. BW 75 lbs.

11B

J&J Racquel 529

CALVED: 2/19/2005 • COW: 15132210 • TATTOO: 529

CA Future Direction 5321 #GAR Precision 1680
 CA Miss Power Fix 308
 #New Trend 315 KG 3 #VDAR New Trend 315
 RAR Erica 152
 #Bon View New Design 1407 #B/R New Design 036
 Bon View Pride 664
 GB New Design 211 #N Bar Emulation EXT
 +14317501 +OSU 6079 Racquel 8176 +DF Empress 6079

BW EPD	WW EPD	YW EPD	SC EPD	MILK EPD	%IMF EPD	UREA EPD
+0.5	+31	+63		+25	+4.8	+5.1

SWEAN	\$FEEDLOT	\$GRID	\$BEEF
+23.98	+10.52	+28.42	+37.78

In the current population of non-parent Angus females, this yearling ranks in the best 3% for IMF EPD and the best 10% for UREA EPD.

• Breeding information available sale day.

12c

J&J Racquel 571

CALVED: 4/15/2005 • COW: 15131158 • TATTOO: 571

BR Midland #Twin Valley Precision E161
 EXG Midnight N657 R3 BR Royal Lass 7036-19
 +14382607 VAR Forever Lady 4304 #GDAR Executive 727
 #Blackcap Lady 384 GDAR
 #Bon View New Design 1407 #B/R New Design 036
 Bon View Pride 664
 GB New Design 208 #N Bar Emulation EXT
 +14317500 +OSU 6079 Racquel 8176 +DF Empress 6079



J&J Blackcap 5110 — Lot 13A

Lots 13A & 13B

BR Midland 13898124	#Twin Valley Precision E161 BR Royal Lass 7036-19	#GAR Precision 1680 +WCC Blackcap C9 #+SAF Neutron #SAF Royal Lass 7036
J&J 1531 Blackcap 240 +14351379	#Rockn D Ambush 1531 +Leachman Blackcap 8261	#Paramont Ambush 2172 Ms Blackcap Band of RD 1301 #Connealy Dateline Leachman Blackcap 4010

	BW EPD	WW EPD	YW EPD	SC EPD	MILK EPD
S:	+1.6	+46	+87	+26	+13
D:	+1.9	+44	+75	-.15	+12

	\$WEAN	\$FEEDLOT	\$GRID	\$BEEF
S:	+21.23	+28.30	+27.93	+51.63
D:	+25.52	+17.21	+17.80	+34.55

13A

J&J Blackcap 5110

CALVED: 3/03/2005 • BULL: +15132195 • TATTOO: 5110

%IMF EPD	UREA EPD
+ .44	+ .40

Blackcap 5110 scanned with the second highest percent IMF in her contemporary group at J&J to result in an IMF EPD that ranks in the best 4% of all non-parent Angus females.

- Breeding information available sale day.

13B

J&J Blackcap 5112

CALVED: 3/03/2005 • BULL: +15132196 • TATTOO: 5112

%IMF EPD	UREA EPD
+ .38	+ .60

Blackcap 5112 scanned the largest ribeye in her contemporary group, posting a ratio of 116. Her EPDs for IMF and UREA currently rank in the best 10% and 5% of non-parent Angus females, respectively.

- Breeding information available sale day.

*Elite Show & Donor Prospects
from the
Leachman Blackcap Family!*



J&J Blackcap 5112 — Lot 13B

Two fantastic yearling heifers that descend from the famous Leachman Blackcap cow family and whose sire currently has the third highest IMF EPD of active Angus sires. The great grandam of these heifers is regarded by many as the greatest daughter of Leachman Right Time. Their grandam, Leachman Blackcap 8261, was the second high selling bred heifer of the 2000 sale at Leachman Angus Ranch and later claimed the honor of being the high selling female of the 2003 “Big Event” Sale at Express Ranches. 8261 is widely heralded for her nearly faultless phenotype, and her prepotency is evident in her daughter, J&J 1531 Blackcap 240 (pictured), who works in our donor program and is the dam of these two heifers.

The Leachman Blackcaps have been great cows for a number of premier Angus operations around the country, such as Three Trees, Monarch Farms, Express and the Leachman family, to name a few. These two heifers have big time potential! They represent what great cow prospects should look like, offering femininity, rib and power in tandem with flawless structure.



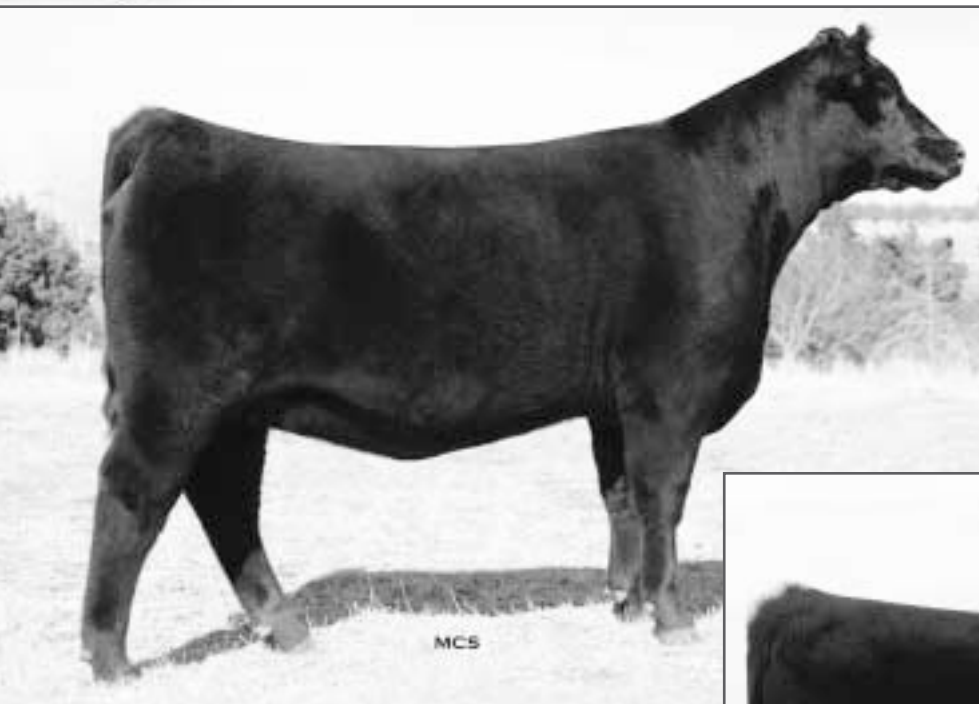
*J&J 1531 Blackcap 240 —
Dam of Lots 13A & 13B*

*Leachman Blackcap 8261
— Grandam of
Lots 13A & 13B*





YEARLING HEIFERS



J&J Oakleaf 501 —
Lot 14A



J&J Oakleaf 5106 —
Lot 14B



Lots 14A & 14B

BR Midland 13898124	#Twin Valley Precision E161 BR Royal Lass 7036-19	#GAR Precision 1680 +WCC Blackcap C9 #+SAF Neutron #SAF Royal Lass 7036
J&J Oakleaf 117 +13844176	#+A&B Yukon 7150 WAF Rally Oakleaf 5144	#Krugerrand of Donamere 490 +A&B Queen 4173 #RR Traveler 5204 #Rally Oakleaf 5142

BW EPD	WW EPD	YW EPD	SC EPD	MILK EPD
I +2.4	I +47	I +89		I +17

This pair of flush sisters, produced in our E.T. program, have been favorites of many over the past few months. They represent strong show heifer prospects from the January and March age groups in our sale offering. They back up their show ring potential with a great EPD spread from Birth to Yearling combined with IMF predictors in the top 10% of non-parent females. A maternal sister sells as Lot 47.

Co-owned with Jeff Mafi.

14A

J&J Oakleaf 501

CALVED: 1/26/2005 • COW: +15131135 • TATTOO: 501

%IMF EPD	UREA EPD	\$WEAN	\$FEEDLOT	\$GRID	\$BEEF
I +.44	I +.27	+23.02	+29.93	+23.15	+47.25

A powerful prospect from the Oakleaf cow family, 501 is big ribbed, heavy boned and wide set through her pins with great pattern and eye appeal.

- Breeding information available sale day.

14B

J&J Oakleaf 5106

CALVED: 3/02/2005 • COW: +15132171 • TATTOO: 5106

%IMF EPD	UREA EPD	\$WEAN	\$FEEDLOT	\$GRID	\$BEEF
I +.41	I +.23	+23.02	+29.93	+22.15	+46.25

This heifer came out of a raised calf program where she was not creep fed. She is still a little green but a tremendous prospect with outstanding length of neck and spine, very correct feet and leg structure and a neat front. She should peak as a bred heifer over the next year.

- Breeding information available sale day.

YEARLING HEIFERS



15

J&J Oakleaf 535

CALVED: 2/23/2005 • COW: 15132209 • TATTOO: 535

EXAR New Look 2971
+14230122

#Bon View New Design 1407
N Bar Primrose 2424

J&J E161 Oakleaf 303
14433603

B/R New Design 036
Bon View Pride 664
#Emulation 31
Primrose N Bar 9962

#Twin Valley Precision E161
+J&J Oakleaf 117

#GAR Precision 1680
+WCC Blackcap C9
#+A&B Yukon 7150
WAF Rally Oakleaf 5144

BW EPD	WW EPD	YW EPD	SC EPD	MILK EPD	%IMF EPD	UREA EPD
+4.4	+49	+96		+23	+23	+60

This powerful show and donor prospect was produced by the two-year-old E161 daughter that sells as Lot 47. 535 compelled us to include her dam in our 2005 E.T. program, where she was mated to produce full sibs to 535. This heifer has tremendous base width, bone and power. Her +.60 UREA predictor ranks in the best 5% of non-parent Angus females. This female offers quite a variety of mating options.

- Breeding information available sale day.



J&J Oakleaf 535 — Lot 15

16

J&J Dixie Erica 5120

CALVED: 4/14/2005 • COW: +15134925 • TATTOO: 5120

EXAR New Look 2971
+14230122

#Bon View New Design 1407
N Bar Primrose 2424

J&J 6807 Dixie 012
+13730176

#DHD Traveler 6807
Dixie Erica of RR 7530

B/R New Design 036
Bon View Pride 664
#Emulation 31
Primrose N Bar 9962

#QAS Traveler 23-4
#Bemindful Maid DHD 0807
#E&B 1483 Scotchman 5041
#Dixie Erica of RR 3506

BW EPD	WW EPD	YW EPD	SC EPD	MILK EPD	%IMF EPD	UREA EPD
+2.2	+45	+87	-.06	+23	+10	+43

A very nice April heifer out of our E.T. program, 5120 has added shape and muscle thickness—she scanned an 11.4 square inch ribeye area at 917 lbs. From one of our best cow families, the Dixie Erica line from Rollin Rock. The only halter broke April heifer in the offering and one of the calmest in disposition. Full sister sells as Lot 61. Maternal sister sells as Lot 22.

- Breeding information available sale day.



J&J Dixie Erica 5120 — Lot 16

17

J&J Queen 574

CALVED: 5/10/2005 • COW: 15131159 • TATTOO: 574

J&J Shock & Awe 322
+14433618

EXAR Sudden Impact 1537
Dixie Erica of RR 7530

J&J 1407 Queen 245
14351384

#+Northern Improvement 4480 GF
+BLR Blushing Pride 9097
#E&B 1483 Scotchman 5041
#Dixie Erica of RR 3506

#Bon View New Design 1407
+J&J Queen 0194

#B/R New Design 036
Bon View Pride 664
#DHD Traveler 6807
C&C Queen 418

BW EPD	WW EPD	YW EPD	SC EPD	MILK EPD	%IMF EPD	UREA EPD
+1.0	+43	+83		+25		

The only May heifer in the sale. Calm demeanor, very correct and good bodied. Sired by a Sudden Impact son produced out of the Dixie Erica cow family. The mother of this heifer is a powerful cow who sells as Lot 29.

- Breeding information available sale day.



J&J Queen 574 — Lot 17



J&J E161 Pride 506 — Lot 18

18

J&J E161 Pride 506

CALVED: 1/30/2005 • COW: 15131141 • TATTOO: 506

#GAR Precision 1680 #Tehama Bando 155
 Twin Valley Precision E161 9J9 GAR 856
 #12346200 +WCC Blackcap C9 #SS Traveler 6T6
 Premier Blackcap 6276A
 #Bon View New Design 1407 #B/R New Design 036
 J&J 1407 Pride 331 Bon View Pride 664
 14433633 +PAF Clearwater Pride 1317 #RR Scotchcap 9440
 Circle S Pride 284

BW EPD	WW EPD	YW EPD	SC EPD	MILK EPD	%IMF EPD	UREA EPD
+2.7	+38	+84		+22	+42	+16

The grandam of this January heifer was selected several years ago out of a Pfeiffer sale and sells as Lot 40. 506 is the first natural calf out of this 1407 daughter with tremendous udder quality. The Pride cow family is famous for producing the A.I. sires Clearwater PAF Seville and PAF Thrive. This is a really big ribbed, correct structured heifer with good bone and feet. She posted a yearling IMF ratio of 113 and ranks in the best 5% of non-parent females for this trait.

\$WEAN	\$FEEDLOT	\$GRID	\$BEEF
+19.37	+28.41	+21.67	+43.75

• Breeding information available sale day.



BR Midland — Ranks third among Angus sires for IMF EPD ... nineteen daughters and a son sell

19

J&J Blanche 5103

CALVED: 2/27/2005 • COW: +15132180 • TATTOO: 5103

#Twin Valley Precision E161 #GAR Precision 1680
 BR Midland 13898124 +WCC Blackcap C9
 BR Royal Lass 7036-19 #+SAF Neutron
 #SAF Royal Lass 7036
 #Connealy Frontline #Connealy Dateline
 Leachman Blanche 1218 #Pleasant Pill of Conanga
 +13874670 Leachman Blanche 5001 #Tehama Bando 155
 Leachman Blanche 3007

BW EPD	WW EPD	YW EPD	SC EPD	MILK EPD	%IMF EPD	UREA EPD
+2.0	+45	+84	+51	+21	+41	+21

This February heifer is very stylish with an attractive front end. Her dam, a Frontline daughter out of the Leachman herd, is in our E.T. program and records a nursing ratio of 102 on her first three natural calves.

\$WEAN	\$FEEDLOT	\$GRID	\$BEEF
+24.82	+25.69	+19.58	+41.15

• Breeding information available sale day.



J&J Empress 526 — Lot 20

20

J&J Empress 526

CALVED: 2/19/2005 • COW: +15132191 • TATTOO: 526

#Twin Valley Precision E161 #GAR Precision 1680
 BR Midland 13898124 +WCC Blackcap C9
 BR Royal Lass 7036-19 #+SAF Neutron
 #SAF Royal Lass 7036
 #+Krugerrands Moneyline #Krugerrand of Donamere 4900
 EXAR Empress 7630 Ankony 5G00 Blackbird GC017
 +12796814 +DF Empress 6079 #Pine Drive Big Sky
 KAF Miss Jetliner 641 1B4

BW EPD	WW EPD	YW EPD	SC EPD	MILK EPD	%IMF EPD	UREA EPD
+1.6	+40	+75	-12	+12	+33	+32

526 is a very stylish, structurally correct heifer that descends from the Empress 6079 cow family. She is a product of our E.T. program, and her donor dam is co-owned with Express Ranches. 526 is a full sister in blood to the high selling female out of the 2005 OSU Cowboy Classic.

\$WEAN	\$FEEDLOT	\$GRID	\$BEEF
+22.31	+18.72	+21.96	+38.89

• Breeding information available sale day.

YEARLING HEIFERS



21

J&J Oakleaf 511

CALVED: 2/02/2005 • COW: 15132189 • TATTOO: 511

BR Midland
13898124

#Twin Valley Precision E161
BR Royal Lass 7036-19

#GAR Precision 1680
+WCC Blackcap C9
#+SAF Neutron
#SAF Royal Lass 7036

J&J Oakleaf 125
+13844183

#+A&B Yukon 7150
WAF Rally Oakleaf 5144

#Krugerrand of Donamere 490
+A&B Queen 4173
#RR Traveler 5204
#Rally Oakleaf 5142

BW EPD	WW EPD	YW EPD	SC EPD	MILK EPD	%IMF EPD	UREA EPD
+2.5	+47	+88		+15	+5.1	+4.0

\$WEAN	\$FEEDLOT	\$GRID	\$BEEF
+22.53	+28.92	+24.56	+48.27

511 is a full sister in blood to the heifers selling as Lots 14A and 14B. This is a powerful cow in the making who posted ratios of 113 for IMF and 112 for REA. Her current IMF EPD ranks her in the best 2% of the population of non-parent Angus females. Great Birth-to-Yearling EPD spread with carcass genetics. Her dam sells as Lot 38.

- Breeding information available sale day.



J&J Oakleaf 511 — Lot 21

22

J&J Dixie Erica 563

CALVED: 4/03/2005 • COW: 15131156 • TATTOO: 563

EXG Midnight N657 R3
+14382607

BR Midland
VAR Forever Lady 4304

#Twin Valley Precision E161
BR Royal Lass 7036-19
#GDAR Executive 727
#Blackcap Lady 384 GDAR

J&J 6807 Dixie 012
+13730176

#DHD Traveler 6807
Dixie Erica of RR 7530

#QAS Traveler 23-4
#Bemindful Maid DHD 0807
#E&B 1483 Scotchman 5041
#Dixie Erica of RR 3506

BW EPD	WW EPD	YW EPD	SC EPD	MILK EPD	%IMF EPD	UREA EPD
+2.1	+44	+82		+17	+1.1	+3.6

\$WEAN	\$FEEDLOT	\$GRID	\$BEEF
+23.58	+24.09	+16.20	+37.27

Another great cow prospect from the Dixie Erica cow family, 563 is big ribbed and stout with correct feet and leg structure. Sired by our senior herd bull "Midnight," who is a full brother to the high selling heifer calf out of the 2005 Express "Big Event" Sale. Maternal sisters sell as Lots 16 and 61. Co-owned with A-Cross Ranch.

- Breeding information available sale day.



EXG Midnight N657 R3 — Sire of Lots 12C, 22 & 30A

EXG Forever Lady 5309 R3 — Full sister to "Midnight"

23

J&J 1407 Chantilly 5114

CALVED: 3/07/2005 • COW: +15132216 • TATTOO: 5114

Bon View New Design 1407
#12783540

#B/R New Design 036
Bon View Pride 664

#VDAR New Trend 315
B/R Blackcap Empress 76
#+GAR Sleep Easy 1009
#Bon View Pride 1551

OSU Chantilly 6184
12704785

#+Rito 9FB3 of 5H11 Fullback
OSU Miss Promise 605A

#Leachman Fullback
Rita 5H11 of 1B14 Rito 9J9
#+Leachman Prompter
#OSU Miss Piney 605

BW EPD	WW EPD	YW EPD	SC EPD	MILK EPD	%IMF EPD	UREA EPD
+1.7	+47	+87	+0.5	+30	+1.5	+3.4

\$WEAN	\$FEEDLOT	\$GRID	\$BEEF
+27.07	+27.92	+15.20	+37.80

A long bodied 1407 daughter with an impressive set of EPDs.

- Breeding information available sale day.

24

EXAR Merle 5166

CALVED: 3/11/2005 • COW: 14960022 • TATTOO: 5166

GAR Henry 5682
+14222580

#Bon View New Design 1407
GAR Precision 1019

#B/R New Design 036
Bon View Pride 664
#GAR Precision 1680
#+GAR EXT 755

EXAR Merle 2646
14087062

+OSU 6079 New Trend 8124
RR Merle 9783

#AAR New Trend
+DF Empress 6079
CH Regal 7299
RR Merle 5497

BW EPD	WW EPD	YW EPD	SC EPD	MILK EPD	%IMF EPD	UREA EPD
+4.2	+38	+76	+1.9	+23	+2.3	+3.6

\$WEAN	\$FEEDLOT	\$GRID	\$BEEF
+18.64	+20.46	+19.38	+37.07

One of the first daughters of GAR Henry, the flush brother to GAR Integrity. 5166 has a big, square hip and scanned with 4.83% IMF as a single contemporary.

- Breeding information available sale day.

SPRING COW/CALF PAIRS

"Empress 6079" Granddaughters



OSU Empress 2143 — Lot 25

25

OSU Empress 2143

CALVED: 1/28/2002 • COW: +14088701 • TATTOO: 2143

#B/R New Design 036 #VDAR New Trend 315
 B/R Blackcap Empress 76
 #12783540 Bon View Pride 664 #+GAR Sleep Easy 1009
 #Bon View Pride 1551
 #+Krugerrands Moneyline #Krugerrand of Donamere 490
 OSU Empress 6188 Ankony 5G00 Blackbird GC017
 +12704789 +DF Empress 6079 #Pine Drive Big Sky
 KAF Miss Jetliner 641 1B4

BW EPD	WW EPD	YW EPD	SC EPD	MILK EPD	%IMF EPD	UREA EPD
+1.1	+34	+75	-0.2	+20	+1.6	+36

One of the most correct, powerful and attractive profiling daughters of 1407 you will find. Sells with a stout bull calf at side by Scotchman 5041. Maternal sister to Lot 26.

\$WEAN	\$FEEDLOT	\$GRID	\$BEEF
+21.17	+21.00	+18.14	+33.96

LOT 25A: Bull calf born 2/07/2006, tattoo 621, by E&B 1483 SCOTCHMAN 5041. BW 78 lbs.



J&J Empress 3108 — Lot 26

26

J&J Empress 3108

CALVED: 1/05/2003 • COW: +14446758 • TATTOO: 3108

#B/R New Design 036 #VDAR New Trend 315
 B/R Blackcap Empress 76
 #11928774 B/R Ruby of Tiffany 155 VDAR Pine Drive 251
 Tiffany BR
 #+Krugerrands Moneyline #Krugerrand of Donamere 490
 OSU Empress 6188 Ankony 5G00 Blackbird GC017
 +12704789 +DF Empress 6079 #Pine Drive Big Sky
 KAF Miss Jetliner 641 1B4

BW EPD	WW EPD	YW EPD	SC EPD	MILK EPD	%IMF EPD	UREA EPD
+1.5	+32	+67	+2.1	+18	+0.8	+29

3108 is a very functional three year old nursing an impressive heifer calf sired by MC 2500. This is a really nice pair.

\$WEAN	\$FEEDLOT	\$GRID	\$BEEF
+21.12	+13.98	+18.20	+29.45

LOT 26A: Heifer calf born 2/23/2006, tattoo 634, by SCHURRTOP MC 2500. BW 74 lbs.



J&J T71 Empress 320 — Lot 27

27

J&J T71 Empress 320

CALVED: 2/06/2003 • COW: +14433610 • TATTOO: 320

#Traveler 1148 GDAR #QAS Traveler 23-4
 GDAR Traveler 71 #Blackcap Forever 485 GDAR
 #10988296 GDAR Miss Blackcap 567 Lavana 355 GDAR
 #Blackcap Lady 384 GDAR
 #GDAR Executive 727 #+PJM Power 291
 Blushing Pride of OSU GDAR Rachel 5115
 +11870574 +DF Empress 6079 #Pine Drive Big Sky
 KAF Miss Jetliner 641 1B4

BW EPD	WW EPD	YW EPD	SC EPD	MILK EPD	%IMF EPD	UREA EPD
+1.8	+31	+60	+0.55	+25	+0.4	+0.5

320 is a full sister to the dam of EXAR Sudden Impact 1537. A power cow that is stout, good uddered and sound, she is nursing a herd sire prospect by Lutton.

\$WEAN	\$FEEDLOT	\$GRID	\$BEEF
+23.61	+7.68	+9.55	+16.03

LOT 27A: Bull calf born 2/05/2006, tattoo 616, by EXAR LUTTON 1831. BW 90 lbs.

SPRING COW/CALF PAIRS



28

J&J Empress 116

CALVED: 2/17/2001 • COW: +13844175 • TATTOO: 116

OGL Battle Cry 427 128
#12215320

#Nichols Eureka W57
#OGL Dusty Rose 128 902

KJ Empress 532
+12451978

#Tehama Bando 155
+DF Empress 6079

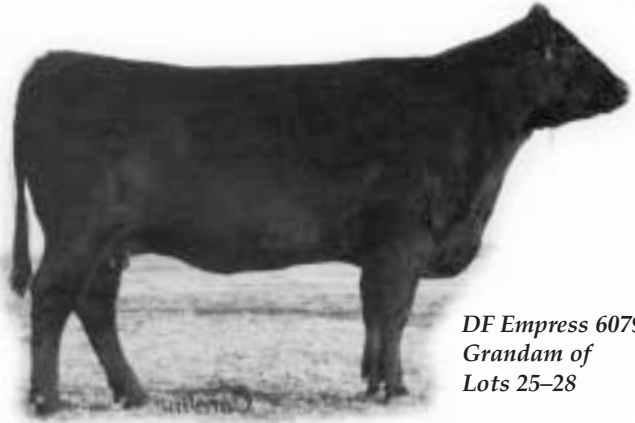
#Nichols Landmark L56
#Nichols Lula P103
#GT Maximum
#OGL Dusty Rose HV 902-V306

#Band 234 of Ideal 3163
Tehama Blackcap G373
#Pine Drive Big Sky
KAF Miss Jetliner 641 1B4

BW EPD	WW EPD	YW EPD	SC EPD	MILK EPD	%IMF EPD	UREA EPD
+2.1	+33	+69	1 +.45	+19	-.02	+11

116 is a nice looking cow nursing a good heifer calf by 1407. 116's 2005 bull calf by 1407 posted a gain test index of 104 at the Oklahoma Beef, Inc. Bull Test Station.

LOT 28A: Heifer calf born 2/09/2006, tattoo 626, by BON VIEW NEW DESIGN 1407. BW 71 lbs.



DF Empress 6079 —
Grandam of
Lots 25-28

"C&C Queen 418" Granddaughters

29

J&J 1407 Queen 245

CALVED: 10/18/2002 • COW: 14351384 • TATTOO: 245

Bon View New Design 1407
#12783540

#B/R New Design 036
Bon View Pride 664

J&J Queen 0194
+13730186

#DHD Traveler 6807
C&C Queen 418

#VDAR New Trend 315
B/R Blackcap Empress 76
#+GAR Sleep Easy 1009
#Bon View Pride 1551

#QAS Traveler 23-4
#Bemindful Maid DHD 0807
Bando of Conanga 573
WK Queen 2147

BW EPD	WW EPD	YW EPD	SC EPD	MILK EPD	%IMF EPD	UREA EPD
+0.5	+39	+82		+25	+29	+19

245 is a powerful cow that is big ribbed, stout hipped, long and sound with great udder attachment and short, refined teats. Her first natural calf sells as Lot 17. 245 posted ratios of 124 for IMF and 108 for REA as a yearling. She sells with a stylish heifer calf by MC 2500 at side.

LOT 29A: Heifer calf born 3/19/2006, tattoo 647, by SCHURRTOP MC 2500. BW 84 lbs.



J&J 1407 Queen 245 — Lot 29

30

J&J Queen 109

CALVED: 1/16/2001 • COW: 13844169 • TATTOO: 109

Northern Improvement 4480 GF
#+13054003

#TC Stockman 365
Blackcap of RR 5367

J&J Queenie 9120
+13335377

#OSU 6T6 Ultra
C&C Queen 418

#TC Stockman
TC Pride 0014
RR Vantage 3352
Blackcap of RR 0238

#SS Traveler 6T6
+DF Empress 6079
Bando of Conanga 573
WK Queen 2147

BW EPD	WW EPD	YW EPD	SC EPD	MILK EPD	%IMF EPD	UREA EPD
+2.2	+42	+80	+86	+30	+17	-.21

109 is a very productive cow with a unique pedigree. Moderate framed, deep ribbed and structurally correct with a flawless udder and teats, she records a Scrotal EPD in the best 10% of active dams. Her 2005 natural bull calf by E161 had a yearling scrotal measurement of 43 cm. This cow's carcass genetics have not yet fully influenced her genetic profile. Her first natural calf evaluated by ultrasound scanned with 7.63% IMF and a 16.4 square inch rib-eye; her second natural calf scanned with 6.37% IMF and a 16.7 square inch rib-eye. Her current production ratios are 2@110 for weaning and yearling, 140 for IMF and 107 for REA. 109 should merit the consideration of those seeking a different cow pedigree to produce herd sires with big scrotal and carcass genetics.

• Will calve before sale day to EXG MIDNIGHT N657 R3.

31

J&J Queen 202

CALVED: 1/26/2002 • COW: 14143077 • TATTOO: 202

Alberda Traveler 416
#12176446

#DHD Traveler 6807
Alberda Queen Kimberly 222

J&J Queenie 9170
+13335373

#QAS Traveler 23-4
#Bemindful Maid DHD 0807
#VDAR New Trend 315
#Alberda Queen Kimberly 169

#+Krugerrands Moneyline
C&C Queen 418

#Krugerrand of Donamere 490
Ankony 5G00 Blackbird GC017
Bando of Conanga 573
WK Queen 2147

BW EPD	WW EPD	YW EPD	SC EPD	MILK EPD	%IMF EPD	UREA EPD
+3.4	+35	+67		+20	+07	-.15

202 balances an individual birth weight ratio of 96 with a weaning weight ratio of 103. Her first calf evaluated by ultrasound ratioed 112 for ribeye area.

LOT 31A: Bull calf born 2/05/2006, tattoo 619, by EXAR LUTTON 1831. BW 90 lbs.



MCW Blackcap K144 — Lot 32

32

MCW Blackcap K144

CALVED: 2/16/2001 • COW: 13994477 • TATTOO: K144

#DHD Traveler 6807 #QAS Traveler 23-4
 #GDAR Blackcap Lady 840 #Bemindful Maid DHD 0807
 #+Skarship Saratoga
 Blackcap Lady 369 GDAR
 #Tehama Bando 155 #Band 234 of Ideal 3163
 LLF 239 Blackcap BN 607 Tehama Blackcap G373
 +12629901 +LLF B607 Blackcap 5204 239 #RR Traveler 5204
 +Leachman Blackcap B607

BW EPD	WW EPD	YW EPD	SC EPD	MILK EPD	%IMF EPD	UREA EPD
+2.3	+31	+64	-1.15	+14	+0.2	+1.0

Tremendous pair of females selling as Lot 32! K144 descends from the Leachman Blackcap line—the same cow family as the heifers selling as Lots 13A and 13B. She is a model type beef cow . . . big volumed, sound, thick and powerful. She has a tremendous heifer calf at side with big time show potential. Both of these females should be donors.

\$WEAN	\$FEEDLOT	\$GRID	\$BEEF
+18.76	+11.47	+13.31	+22.12

LOT 32A: Heifer calf born 3/06/2006, tattoo 643, by EXAR LUTTON 1831. BW 77 lbs.



OSU Lady Regal 1124 — Lot 33

33

OSU Lady Regal 1124

CALVED: 1/25/2001 • COW: 13837940 • TATTOO: 1124

#N Bar Emulation EXT #Emulation N Bar 5522
 Leachman Right Time N Bar Primrose 2424
 #+11750711 Leachman Erica 0025 #Tehama Bando 155
 Leachman Erica 8058
 #Scotch Cap #PS Power Play
 OSU Lady Regal 7161 #Hoff Band O7 of SC 509
 12832840 OSU 89 Ann 041C #Ginger Hill Duster 89
 OSU Lady Promise 804A

BW EPD	WW EPD	YW EPD	SC EPD	MILK EPD	%IMF EPD	UREA EPD
+3.2	+42	+71	+44	+18	+1.1	+1.9

1124 was purchased in partnership with Jeff Mafi out of the 2003 OSU Cowboy Classic. She is powerful in appearance and has been a consistent producer of herd bulls. She balances ratios of 100 at birth, 102 at weaning and 110 at yearling with ultrasound ratios of 104 for IMF and 100 for REA on her first three natural calves.

\$WEAN	\$FEEDLOT	\$GRID	\$BEEF
+23.23	+14.10	+11.38	+26.59

LOT 33A: Bull calf born 2/10/2006, tattoo 628, by EXAR LUTTON 1831. BW 84 lbs.



R3 Blackcap K83 — Lot 34

34

R3 Blackcap K83

CALVED: 2/04/2000 • COW: 13634859 • TATTOO: K83

#Scotch Cap #PS Power Play
 RR Scotchcap 9440 #Hoff Band O7 of SC 509
 #11293310 Blackcap of RR 5367 RR Vantage 3352
 Blackcap of RR 0238
 #N Bar Emulation EXT #Emulation N Bar 5522
 Leachman Blackcap 2047 N Bar Primrose 2424
 #11741649 #Leachman Blackcap 9007 #+Leachman Prompter
 Leachman Blackbird 6002

BW EPD	WW EPD	YW EPD	SC EPD	MILK EPD	%IMF EPD	UREA EPD
+4.0	+46	+91	+33	+23	+1.0	+0.4

K83 has been an outstanding producer for J&J. She offers extra length, bone and productivity. Ratios on her first four natural calves are 101 for birth, 107 for weaning and yearling, 104 for IMF and 103 for REA. This cow has an extremely good heifer calf at side by Integrity. A big time pair of females!

\$WEAN	\$FEEDLOT	\$GRID	\$BEEF
+19.94	+32.35	+6.27	+31.42

LOT 34A: Heifer calf born 1/22/2006, tattoo 601, by GAR INTEGRITY. BW 81 lbs.

SPRING COW/CALF PAIRS



J&J Erica 126 — Lot 35



J&J Oakleaf 124 — Lot 37

35

J&J Erica 126

CALVED: 3/03/2001 • COW: 13844184 • TATTOO: 126

#Krugerrand of Donamere 490 #CH Stacker 7040
 Donamere Bachel Beauty 288
 A&B Yukon 7150 #+12862009 +A&B Queen 4173 #CH Stacker 7040
 A&B Maxima Queen 2007
 #Tehama Bando 155 #Band 234 of Ideal 3163
 Tehama Blackcap G373
 Lyons Erica 4001 #QAS Traveler 23-4
 12165575 Lyons Erica 2038
 Lyons Erica 8050

BW EPD	WW EPD	YW EPD	SC EPD	MILK EPD	%IMF EPD	UREA EPD
-0.7	+45	+85	-1.18	+19	-0.07	+0.01

Produced by a past sale feature from Pollard Farms, J&J Erica 126 has been a favorite of many who have seen her since birth. Very correct and powerful with a balanced udder and short teats, she balances a Birth EPD in the best 4% with a Yearling predictor in the best 5% of active Angus dams. Production ratios are: 3@102 for birth, 3@107 for weaning and 2@102 for yearling. Sells with an impressive Midland bull calf at side.

LOT 35A: Bull calf born 1/29/2006, tattoo 604, by BR MIDLAND. BW 75 lbs.

36

EXG Blackbird N3 R3

CALVED: 1/05/2003 • COW: 14349992 • TATTOO: N3

#B/R New Design 036 #VDAR New Trend 315
 B/R Blackcap Empress 76
 Bon View New Design 1407 #+12783540 +Leachman Blackbird 1113
 #Tehama Bando 155 #Band 234 of Ideal 3163
 Tehama Blackcap G373
 Leachman Blackbird 8208 #Rito 9J9 of B156 7T26
 +13048112 +Leachman Blackbird 7901

BW EPD	WW EPD	YW EPD	SC EPD	MILK EPD	%IMF EPD	UREA EPD
-0.2	+37	+71	-1.49	+23	+1.26	+1.27

A productive three year old nursing a stout, growthy bull calf sired by Traveler 004. N3 scanned with 6.33% IMF and a ribeye of 11.9 square inches at an adjusted weight of 860 lbs. as a yearling heifer. Her first natural calf, sired by BR Midland, posted ratios of 117 for IMF and 100 for REA.

LOT 36A: Bull calf born 1/26/2006, tattoo 602, by SAV 8180 TRAVELER 004. BW 84 lbs.

37

J&J Oakleaf 124

CALVED: 2/22/2001 • COW: +13844182 • TATTOO: 124

#Krugerrand of Donamere 490 #CH Stacker 7040
 Donamere Bachel Beauty 288
 A&B Yukon 7150 #+12862009 +A&B Queen 4173 #CH Stacker 7040
 A&B Maxima Queen 2007
 #RR Traveler 5204 #QAS Traveler 23-4
 Eriskay of Rollin Rock 3302
 WAF Rally Oakleaf 5144 #Rally Oakleaf 5142
 12091684 #Hyline Nickel
 Rally Oakleaf 5138

BW EPD	WW EPD	YW EPD	SC EPD	MILK EPD	%IMF EPD	UREA EPD
+3.5	+47	+89	+1.47	+20	-0.03	-0.08

\$WEAN	\$FEEDLOT	\$GRID	\$BEEF
+21.62	+29.93	+9.04	+33.00

LOT 37A: Bull calf born 2/09/2006, tattoo 625, by GAR INTEGRITY. BW 92 lbs.

38

J&J Oakleaf 125

CALVED: 2/23/2001 • COW: +13844183 • TATTOO: 125

#Krugerrand of Donamere 490 #CH Stacker 7040
 Donamere Bachel Beauty 288
 A&B Yukon 7150 #+12862009 +A&B Queen 4173 #CH Stacker 7040
 A&B Maxima Queen 2007
 #RR Traveler 5204 #QAS Traveler 23-4
 Eriskay of Rollin Rock 3302
 WAF Rally Oakleaf 5144 #Rally Oakleaf 5142
 12091684 #Hyline Nickel
 Rally Oakleaf 5138

BW EPD	WW EPD	YW EPD	SC EPD	MILK EPD	%IMF EPD	UREA EPD
+3.6	+45	+87	+1.47	+17	+1.16	-1.12

\$WEAN	\$FEEDLOT	\$GRID	\$BEEF
+19.99	+28.69	+13.84	+37.15

LOT 38A: Heifer calf born 3/22/2006, tattoo 648, by SCHURRTOP MC 2500. BW 90 lbs.

Lots 37 and 38 are full sisters to the donor that produced the Lots 14A and 14B heifers. These cows represent unique breeding pieces in today's population of Angus females. They are as long, heavy boned and thick as most any Angus cows you will find. They are also sound, correct and easy keeping and have done a very good job for us at J&J. Both were produced in our E.T. program from what we still consider the best Traveler 5204 cow we have ever seen.

124's 2005 natural bull calf scanned with over 6.0% IMF and had a 17.8 square inch ribeye—the largest of any bull we raised in 2005. 125 herself posted an IMF ratio of 137 as a yearling, and her 2005 natural heifer calf, who sells as Lot 21, posted IMF and REA ratios of 113 and 112, respectively. Only because we have a sister in our donor program do we offer these females. If you are looking for quality cows to add growth and power, look no further!

SPRING COW/CALF PAIRS



Leachman Lass 0027 — Lot 39

39

Leachman Lass 0027

CALVED: 2/27/2000 • COW: #13567707 • TATTOO: 0027

Leachman Full Trend
+12659437

#VDAR New Trend 315
#AAR New Trend
#VDAR Lucy 704
+Leachman Blackcap 0204
+Leachman Vision
Leachman Blackcap 6047

#Sitz Traveler 9929
#DHD Traveler 6807
Leachman Lass 8223
#+13047765
+Leachman Lass 9205
Sitz Everelda Entense 1137
#Leachman Investor
+Leachman Lass 400L

BW EPD	WW EPD	YW EPD	SC EPD	MILK EPD	%IMF EPD	UREA EPD
+4.3	+32	+64	+79	+31	-.07	-.08

Note that this cow is a Path-finder. We are retaining her 2005 natural calf as a replacement. 0027's production ratios are 4@104 for birth and 4@107 for both weaning and yearling.

\$WEAN	\$FEEDLOT	\$GRID	\$BEEF
+18.61	+11.11	+7.19	+16.60

LOT 39A: Bull calf born 2/07/2006, tattoo 620, by GAR INTEGRITY. BW 85 lbs.



Clearwater PAF Seville — Maternal brother to Lot 40

40

PAF Clearwater Pride 1317

CALVED: 9/01/1997 • COW: +13024416 • TATTOO: 1317

RR Scotchcap 9440
#11293310

#Scotch Cap
Blackcap of RR 5367

#PS Power Play
#Hoff Band O7 of SC 509
RR Vantage 3352
Blackcap of RR 0238

Circle S Pride 284
11946097

#+SAF Power Fix
Circle S Pride 065

#+Brost Power Drive
Pride Queen T 4155
#GDAR Traveler 71
Circle S Pride 859

BW EPD	WW EPD	YW EPD	SC EPD	MILK EPD	%IMF EPD	UREA EPD
+1.3	+36	+69	+27	+15	+0.2	-.22

This Scotchcap 9440 daughter is a big ribbed, sound, proven producer that represents a very strong cow family. Her dam, Circle S Pride 284, is famous for producing A.I. sires Clearwater PAF Seville and PAF Thrice. A granddaughter sells as Lot 18.

\$WEAN	\$FEEDLOT	\$GRID	\$BEEF
+21.45	+14.41	+6.76	+19.54

LOT 40A: Heifer calf born 3/25/2006, tattoo 650, by EXAR LUTTON 1831. BW 73 lbs.

Guest Consignment from A-Cross Ranch . . . Lots 41-46



A Cross Mable A05 — Lot 41

41

A Cross Mable A05

CALVED: 2/16/2002 • COW: 14683141 • TATTOO: A05

Bon View New Design 1407
#12783540

#B/R New Design 036
Bon View Pride 664

#VDAR New Trend 315
B/R Blackcap Empress 76
#+GAR Sleep Easy 1009
#Bon View Pride 1551

#N Bar Emulation EXT
#Emulation N Bar 5522
N Bar Primrose 2424
KAR Shoshone Traveler 209
#AAA Miss Trendy 003

PAF 727 EXT 9831
13336978

PAF Mable 727

BW EPD	WW EPD	YW EPD	SC EPD	MILK EPD	%IMF EPD	UREA EPD
+0.9	+42	+82	-.02	+31	+0.34	+0.36

A05 has been an excellent producer at A-Cross Ranch. She ranks in the top 2% of the breed for IMF, top 1% for Milk and top 4% for Beef \$Value. Her first two calves recorded average weaning and yearling ratios of 114 and 111 and IMF and REA ratios of 114 and 102, respectively. A05 is big volumed, attractive and correctly structured. She sells with a January heifer calf by the 2005 Denver Champion Pen of Three lead bull!

\$WEAN	\$FEEDLOT	\$GRID	\$BEEF
+26.40	+24.86	+20.95	+39.61

LOT 41A: Heifer calf born 1/28/2006, tattoo A600, by OSU TOTAL IMPACT 4112. BW 67 lbs.

SPRING COW/CALF PAIRS



Guest Consignment from A-Cross Ranch

42

OSU A-Cross Empress 3100

CALVED: 1/01/2003 • COW: 14446746 • TATTOO: 3100

#B/R New Design 036
Bon View New Design 1407
#12783540 Bon View Pride 664

#VDAR New Trend 315
B/R Blackcap Empress 76
#+GAR Sleep Easy 1009
#Bon View Pride 1551

#RR Scotchcap 9440
OSU A Cross Empress 1105
13837861 EXAR Empress 7534

#Scotch Cap
Blackcap of RR 5367
#+Krugerrands Moneyline
+OSU 2928 Empress 4181

BW EPD	WW EPD	YW EPD	SC EPD	MILK EPD	%IMF EPD	UREA EPD
+0.7	+46	+89		+27	+0.9	+0.3

3100 was a partnership female that we owned with Oklahoma State University. Her dam traces back to the famous Empress 6079. 3100 ranks in the top 5% of the breed for growth and maternal traits. She is a correctly structured, heavy boned, big volumed 1407 daughter. Her first calf ratioed 102 and 106 for weaning and yearling traits and 102 and 114 for IMF and REA.

\$WEAN	\$FEEDLOT	\$GRID	\$BEEF
+26.79	+30.32	+11.86	+34.59

LOT 42A: Bull calf born 2/06/2006, tattoo A604, by EXAR LUTTON 1831. BW 83 lbs.



OSU A-Cross Empress 3100 — Lot 42

43

OSU Lady 2108

CALVED: 1/11/2002 • COW: 14088697 • TATTOO: 2108

#B/R New Design 036
Bon View New Design 1407
#12783540 Bon View Pride 664

#VDAR New Trend 315
B/R Blackcap Empress 76
#+GAR Sleep Easy 1009
#Bon View Pride 1551

+OSU 6079 Reagan 8173
OSU Lady 0162
13611425 OSU Lady Pam 8131

#N Bar Emulation EXT
+DF Empress 6079
+OSU Panama a 4178
OSU Miss New Yorker 571

BW EPD	WW EPD	YW EPD	SC EPD	MILK EPD	%IMF EPD	UREA EPD
+1.4	+37	+79		+23	+2.8	+3.6

2108 is a feminine, attractive female that has been a solid producer. She ranks in the top 4% of the breed for IMF and Beef \$Value. Her first two calves have averaged 103 for weaning and yearling ratios and 117 and 104 on IMF and REA, respectively. We are retaining her excellent 2005 daughter as a replacement.

\$WEAN	\$FEEDLOT	\$GRID	\$BEEF
+22.60	+23.80	+20.53	+40.11

• Should calve around sale time to OSU A-CROSS IMPACT 3145.

45

A Cross Lucy Rose A14

CALVED: 3/04/2003 • COW: 14683138 • TATTOO: A14

OSU Prompt 9195
13335370

OSU Prompter 869A
OSU Casha 7136

#+Leachman Prompter
OSU Lady Spurrier 869
#+Krugerrands Moneyline
+OSU Lady 941

Thomas Lucy Rose 7564
12770279

#RR Scotchcap 9440
Thomas Lucy Rose 4381

#Scotch Cap
Blackcap of RR 5367
#Rito 8E8 of 5H11 Traveler
#Thomas Lucy Rose 0272

BW EPD	WW EPD	YW EPD	SC EPD	MILK EPD	%IMF EPD	UREA EPD
+2.7	+39	+69	+3.2	+13	+0.9	-1.6

A14 is a big volumed, easy keeping three year old from the Thomas Lucy cow family.

\$WEAN	\$FEEDLOT	\$GRID	\$BEEF
+21.47	+13.29	+10.85	+24.31

LOT 45A: Heifer calf born 2/17/2006, tattoo A612, by EXAR NEW LOOK 2971. BW 67 lbs.

44

LSA Improvement 942 2094

CALVED: 2/09/2002 • COW: 14640739 • TATTOO: 2094

#TC Stockman 365
Northern Improvement 4480 GF
#+13054003 Blackcap of RR 5367

#TC Stockman
TC Pride 0014
RR Vantage 3352
Blackcap of RR 0238

#Connealy Dateline
PAF Dateline 778 942
13590049 PAF Lady Cap 778

#DHD Traveler 6807
#Eila Eila of Conanga
#+OCC Backstop 888B
PAF Lady Cap 002

BW EPD	WW EPD	YW EPD	SC EPD	MILK EPD	%IMF EPD	UREA EPD
+0.7	+37	+71		+16		

2094 is a feminine, attractive, long bodied daughter of Northern Improvement. Her Beef \$Value ranks in the top 5% of current Angus dams.

\$WEAN	\$FEEDLOT	\$GRID	\$BEEF
+23.66	+15.97	+19.80	+38.18

LOT 44A: Bull calf born 4/11/2006, tattoo A648, by OSU A-CROSS IMPACT 3145. BW 71 lbs.

46

A Cross Eriskay A08

CALVED: 3/01/2003 • COW: 14683137 • TATTOO: A08

OSU Prompt 9195
13335370

OSU Prompter 869A
OSU Casha 7136

#+Leachman Prompter
OSU Lady Spurrier 869
#+Krugerrands Moneyline
+OSU Lady 941

PAF 879B 9440 9915
+13336990

#RR Scotchcap 9440
Eriskay of Rollin Rock 879B

#Scotch Cap
Blackcap of RR 5367
#DHD Traveler 6807
Eriskay of Rollin Rock 5202

BW EPD	WW EPD	YW EPD	SC EPD	MILK EPD	%IMF EPD	UREA EPD
+2.3	+38	+69		+15	+0.8	-1.8

A08 is a solid producing young female that descends from an excellent cow family. We are retaining her 2005 replacement heifer in the herd.

\$WEAN	\$FEEDLOT	\$GRID	\$BEEF
+22.24	+13.66	+10.46	+23.94

LOT 46A: Heifer calf born 4/11/2006, tattoo A647, by OSU A-CROSS IMPACT 3145. BW 61 lbs.



J&J E161 Oakleaf 303 — Lot 47



J&J Queen 220 — Lot 48

47

J&J E161 Oakleaf 303

CALVED: 1/31/2003 • COW: 14433603 • TATTOO: 303

#GAR Precision 1680 Twin Valley Precision E161 #12346200	+WCC Blackcap C9	#Tehama Bando 155 9J9 GAR 856 #SS Traveler 6T6 Premier Blackcap 6276A
#+A&B Yukon 7150 J&J Oakleaf 117 +13844176	WAF Rally Oakleaf 5144	#Krugerrand of Donamere 490 +A&B Queen 4173 #RR Traveler 5204 #Rally Oakleaf 5142

BW EPD	WW EPD	YW EPD	SC EPD	MILK EPD	%IMF EPD	UREA EPD
+4.1	+47	+94		+18	+28	+36

This maternal sister to Lots 14A and 14B and dam of Lot 15 is really wide, deep and stout. As a yearling she posted ratios of 120 for IMF and 101 for REA. As a two year old she became a donor.

- Sells safe in calf to EXAR NEW LOOK 2971. Due 10/03/2006.

\$WEAN	\$FEEDLOT	\$GRID	\$BEEF
+18.63	+35.01	+20.63	+47.31

48

J&J Queen 220

CALVED: 2/18/2002 • COW: 14136806 • TATTOO: 220

J&J Traveler 019 +13730179	#DHD Traveler 6807 Dixie Erica of RR 7530	#QAS Traveler 23-4 #Bemindful Maid DHD 0807 #E&B 1483 Scotchman 5041 #Dixie Erica of RR 3506
J&J Queenie 9120 +13335377	#+OSU 6T6 Ultra C&C Queen 418	#SS Traveler 6T6 +DF Empress 6079 Bando of Conanga 573 WK Queen 2147

BW EPD	WW EPD	YW EPD	SC EPD	MILK EPD	%IMF EPD	UREA EPD
+3.6	+46	+87	+6.4	+21	-.02	+00

This cow descends from a powerful line of females on both the top and bottom of her pedigree. Her sire, J&J Traveler 019, gained 6.14 lbs. per day on 112-day test to post the highest ADG of over 100 contemporaries at Oklahoma Beef, Inc. This son of Dixie Erica of RR 7530 currently works as a herd sire for Ratcliff Ranch, Vinita, Oklahoma. Stout and easy to look at, 220 posted individual ratios of 102 for birth, 111 for weaning and 112 for yearling with a REA ratio of 105.

- Sells safe in calf to EXAR LUTTON 1831. Due 9/11/2006.

\$WEAN	\$FEEDLOT	\$GRID	\$BEEF
+21.55	+28.30	+8.74	+32.26

49

PAF 861 AT F011

CALVED: 10/06/2000 • COW: 13814752 • TATTOO: F011

Alberda Traveler 416 #12176446	#DHD Traveler 6807 Alberda Queen Kimberly 222	#QAS Traveler 23-4 #Bemindful Maid DHD 0807 #VDAR New Trend 315 #Alberda Queen Kimberly 169
PAF 328 EXT 861 13336813	#N Bar Emulation EXT #PAF Miss Lucy 328	#Emulation N Bar 5522 N Bar Primrose 2424 #GT Maximum Miss Reprint 609 of PAF

BW EPD	WW EPD	YW EPD	SC EPD	MILK EPD	%IMF EPD	UREA EPD
+3.8	+40	+73	+32	+27	+15	+24

F011 comes from our donor program. Her first two natural calves recorded average ratios of 102 at birth, 106 at weaning and 102 at yearling with a REA ratio of 108. We are retaining her fall 2005 natural calf by 1407.

- Sells safe in calf to BR MIDLAND. Due 10/02/2006.

\$WEAN	\$FEEDLOT	\$GRID	\$BEEF
+22.05	+16.78	+15.28	+30.89

50

J&J 6807 Dixie 009

CALVED: 3/01/2000 • COW: +13730173 • TATTOO: 009

DHD Traveler 6807 #10858958	#QAS Traveler 23-4 #Bemindful Maid DHD 0807	#Band 234 of Ideal 3163 QAS Blackbird Eve 601 1 #PBC 707 1M F0203 Bemindful Maid of RR 1079
Dixie Erica of RR 7530 12903922	#E&B 1483 Scotchman 5041 #Dixie Erica of RR 3506	#RR 9440 Scotch Cap 1483 Lady 183 Traveler 334 Corral Creek Strath C061 #Dixie Erica of RR 8258

BW EPD	WW EPD	YW EPD	SC EPD	MILK EPD	%IMF EPD	UREA EPD
+1.4	+36	+71	+0.06	+20	+0.01	+1.11

009 represents one of the most significant female lines used to build the cow herd at J&J. Her dam, Dixie Erica of RR 7530, has been a foundation cow in our operation. Her flush sister, J&J Dixie Erica 012, co-owned with A-Cross Ranch, is in our donor program. A really big ribbed, easy keeping cow with production ratios of 2@104 for birth, 2@106 for weaning and 1@104 for yearling.

- Sells safe in calf to EXAR LUTTON 1831. Due 12/08/2006.

\$WEAN	\$FEEDLOT	\$GRID	\$BEEF
+23.49	+16.34	+13.63	+27.64

FALL-CALVING COWS



51

OSU 6164 Promise 8204

CALVED: 10/01/1998 • COW: +13135934 • TATTOO: 8204

OSU 9FB3 Halfback 6164
+12615275

##Rito 9FB3 of 5H11 Fullback
+DF Empress 6079

##Leachman Prompter
OSU Miss Promise 605A
11578315

#Leachman Fullback
Rita 5H11 of 1B14 Rito 9J9
#Pine Drive Big Sky
KAF Miss Jetliner 641 1B4

##Brost Power Drive
Leachman Lass 1004
#Pine Drive Big Sky
OSU Miss Affirmed 137

BW EPD	WW EPD	YW EPD	SC EPD	MILK EPD	%IMF EPD	UREA EPD
+4.1	+47	+82	+1.16	+18	-.21	+.04

A consistent producer of stout bull progeny. Several sons have topped or been among sale topping bulls at Oklahoma Beef, Inc. Records 5@99 for birth, 5@102 for weaning, 4@101 for yearling and 3@101 for both IMF and REA.

- Sells safe in calf to GAR INTEGRITY. Due 9/20/2006.

52

Summitcrest Heiress 1N25

CALVED: 1/25/2003 • COW: 14584967 • TATTOO: 1N25

Summitcrest High Prime 0H29
13122485

#Gardens Prime Time
Summitcrest Missie 2F55

Summitcrest EXT 1C10
Summitcrest Heiress 4K79
13683351

#RR Traveler 5204
#Green Garden Susie 1246 S1
#Finks 5522-6148
#Summitcrest Missie 1C24

#N Bar Emulation EXT
#Summitcrest Pixie 1R93
#Tehama Bando 155
Summitcrest Heiress 0R01

BW EPD	WW EPD	YW EPD	SC EPD	MILK EPD	%IMF EPD	UREA EPD
+1.4	+33	+57	-.58	+19	+.12	+.17

This female did a very nice job with her first calf, who sells as Lot 63.

- Sells safe in calf to BON VIEW NEW DESIGN 1407. Due 12/08/2006.

SWEAN	\$FEEDLOT	\$GRID	\$BEEF
+24.85	+4.15	+22.40	+27.01

For your notes . . .



Fall Show Heifer and Donor Prospects



J&J Queen 590 — Lot 53

53

J&J Queen 590

CALVED: 9/23/2005 • COW: +15286959 • TATTOO: 590

#TC Stockman 365
Northern Improvement 4480 GF
#+13054003
Blackcap of RR 5367

#TC Stockman
TC Pride 0014
RR Vantage 3352
Blackcap of RR 0238

#A&B Yukon 7150
J&J Queenie 9206
+13412890
C&C Queen 418

#Krugerrand of Donamere 490
+A&B Queen 4173
Bando of Conanga 573
WK Queen 2147

BW EPD	WW EPD	YW EPD	SC EPD	MILK EPD	%IMF EPD	UREA EPD
1 +2.0	1 +42	1 +83		1 +18	1 -.05	1 -.21

This senior heifer calf is Mark's pick of the September-born show

SWEAN	SPEEDLOT	SGRID	SBEEF
+22.55	+25.85	+13.69	+35.31

heifer prospects and a favorite of many visitors. Northern Improvement has proven himself as a sire of elite show prospects. 590 was produced by a powerful Yukon donor who has distinguished herself as a producer of cattle with look and power. Full sibs to this mating include J&J Queen 414, co-owned with Carl Johnson of Nevada, Missouri, and now working in our donor program; and J&J Improvement 437, co-owned with the Jim Strate Family and currently working as a herd sire in their operation at Enid, Oklahoma. This heifer combines all the ingredients to be competitive in the show ring at any level. Maternal sisters sell as Lots 54 through 58.

- Sells open.



J&J Queen 585 —
Lot 54



J&J Queen 587 — Lot 56



54 J&J Queen 585
CALVED: 9/11/2005 • COW: +15286954 • TATTOO: 585

• Sells open.

55 J&J Queen 586
CALVED: 9/17/2005 • COW: +15286955 • TATTOO: 586

• Sells open.

56 J&J Queen 587
CALVED: 9/19/2005 • COW: +15286956 • TATTOO: 587

• Sells open.

57 J&J Queen 588
CALVED: 9/20/2005 • COW: +15286957 • TATTOO: 588

• Sells open.

Lots 54 through 58

BR Midland 13898124	#Twin Valley Precision E161 BR Royal Lass 7036-19	#GAR Precision 1680 +WCC Blackcap C9 #+SAF Neutron #SAF Royal Lass 7036
J&J Queenie 9206 +13412890	#+A&B Yukon 7150 C&C Queen 418	#Kruggerand of Donamere 490 +A&B Queen 4173 Bando of Conanga 573 WK Queen 2147

BW EPD	WW EPD	YW EPD	SC EPD	MILK EPD	%IMF EPD	UREA EPD
1 +3.2	1 +47	1 +93		1 +12	1 +.33	1 +.08

\$WEAN	\$FEEDLOT	\$GRID	\$BEEF
+18.90	+33.99	+17.30	+42.61

This is an outstanding set of five full sisters sired by BR Midland, who records the third highest IMF EPD among current sires and who has distinguished himself as a sire of outstanding females. These heifers descend from the C&C Queen cow family, a line of females with outstanding udder quality, eye appeal and balance. The dam of these sisters is a powerful daughter of A&B Yukon who has proven herself as a producer of cattle with power and look. These flush sisters offer great potential. Maternal sister sells as Lot 53.

58 J&J Queen 591
CALVED: 9/23/2005 • COW: +15286958 • TATTOO: 591

• Sells open.



FALL-BORN HEIFERS



J&J Dixie Erica 593 —
Lot 59



J&J Dixie Erica 595
— Lot 60



Lots 59 & 60

BR Midland 13898124	#Twin Valley Precision E161 BR Royal Lass 7036-19	#GAR Precision 1680 +WCC Blackcap C9 #+SAF Neutron #SAF Royal Lass 7036
J&J Dixie Erica 227 +14136793	#B/R New Design 323 Dixie Erica of RR 7530	#B/R New Design 036 B/R Ruby of Tiffany 155 #E&B 1483 Scotchman 5041 #Dixie Erica of RR 3506

	BW EPD	WW EPD	YW EPD	SC EPD	MILK EPD
S:	+1.6	+46	+87	+.26	+13
D:	+1.0	+34	+65	+.59	+21

	SWEAN	SPEEDLOT	SGRID	SBEEF	%IMF EPD	UREA EPD
S:	+21.23	+28.30	+27.93	+51.63	+1.50	+1.37
D:	+24.16	+11.32	+23.70	+34.01		

59

J&J Dixie Erica 593

CALVED: 10/13/2005 • COW: +15288577 • TATTOO: 593

- Sells open.

60

J&J Dixie Erica 595

CALVED: 11/13/2005 • COW: +15290229 • TATTOO: 595

- Sells open.

These two heifers, produced in our E.T. program, have big time cow potential and should do quite well in the show ring on their way to becoming donors. They descend from the Dixie Erica of Rollin Rock cow family. 593 and 595 are bred for elite carcass genetics. Their dam, a 323 daughter, scanned with 6.68% IMF as a yearling, and this mating to the sire with the third highest IMF EPD in the breed results in IMF predictors ranking in the best 3% of non-parent Angus females. These heifers are good structured, big ribbed, attractive fronted and loaded with eye appeal.

FALL-BORN HEIFERS



61

J&J Dixie Erica 592

CALVED: 9/26/2005 • COW: +15286960 • TATTOO: 592

EXAR New Look 2971 +14230122
 #Bon View New Design 1407 N Bar Primrose 2424
 #DHD Traveler 6807 Dixie Erica of RR 7530
 B/R New Design 036 Bon View Pride 664 #Emulation 31 Primrose N Bar 9962
 #QAS Traveler 23-4 #Bemindful Maid DHD 0807 #E&B 1483 Scotchman 5041 #Dixie Erica of RR 3506

BW EPD	WW EPD	YW EPD	SC EPD	MILK EPD	%IMF EPD	UREA EPD
I +2.2	I +45	I +87	I -.06	I +23	I +.10	I +.43

This September heifer is a full sister to the April heifer selling as Lot 16 and is made very similar. She is a descendant of a great line of cows, the Dixie Ericas of Rollin Rock. 592 offers a great EPD spread from Birth to Weaning, high Milk and an UREA EPD among the best 20% of non-parent females. Maternal sister sells as Lot 22.

• Sells open.



EXAR New Look 2971 — Sire of Lots 1, 2A-2C, 15, 16, 45A & 61

62

J&J 355 Empress 583

CALVED: 10/06/2005 • COW: 15131161 • TATTOO: 583

J&J New Design 355 +14597364
 #Bon View New Design 1407 Dixie Erica of RR 7530
 #GDAR Traveler 71 +Blushing Pride of OSU
 #B/R New Design 036 Bon View Pride 664 #E&B 1483 Scotchman 5041 #Dixie Erica of RR 3506
 #Traveler 1148 GDAR GDAR Miss Blackcap 567 #GDAR Executive 727 +DF Empress 6079

BW EPD	WW EPD	YW EPD	SC EPD	MILK EPD	%IMF EPD	UREA EPD
I +0.6	I +39	I +77	I +5	I +28	I +.04	I +.20
D: I +1.7	D: I +31	D: I +60	D: I +.55	D: I +25		

SWEAN	SFEEDLOT	SGRID	SBEEF
S: +25.63	S: +21.06	S: +21.64	S: +39.07
D: +24.81	D: + 7.68	D: + 3.63	D: +10.11

This early October heifer is deep ribbed and very stylish. She was produced by a first-calf heifer who is a full sister to the dam of EXAR Sudden Impact. 583's sire, J&J New Design 355, is a 1407 son produced by one of our foundation donors, Dixie Erica of RR 7530. 355 is a huge scrotal bull that scanned with a 17.4 square inch ribeye as a yearling.

• Sells open.

63

Blackjacks Heiress 5006

CALVED: 8/25/2005 • COW: 15182302 • TATTOO: 5006

Connealy Freightliner #13026916
 #Bon View Bando 598 Joana Erica of Conanga
 Summitcrest High Prime 0H29
 Summitcrest Heiress 1N25 14584967 Summitcrest Heiress 4K79
 #Tehama Bando 155 #Bon View Dora 56 #Nichols Heavy Duty X100 Jarne Erica of Conanga
 #Gardens Prime Time Summitcrest Missie 2F55 Summitcrest EXT 1C10 +Summitcrest Heiress 2G08

BW EPD	WW EPD	YW EPD	SC EPD	MILK EPD	%IMF EPD	UREA EPD
I +1.6	I +40	I +74		I +20	I +.12	I +.20

SWEAN	SFEEDLOT	SGRID	SBEEF
S: +24.84	S: +17.75	S: +17.80	S: +32.58

5006 is the only August-born heifer in the sale. Wide based and stout, she should make an easy keeping cow.

• Sells open.

The Answers to Beef Cow Nutrition Aren't Always Black and White



Sometimes They're Emerald, Bronze, Gold and Onyx

The Right Now® Mineral program helps you make sure that the right minerals go to the right cows at the right time. That means improved weaning rates, heavier calves and reduced feed costs.

Each color-coded product is a special formula. Because beef cow nutrition is not a black-and-white issue. These formulas meet the ever-changing health and breeding requirements of specific herds. We even balance our main and trace mineral by region to supplement available forage at different times of the year. Ask your Cargill Animal Nutrition consultant how Right Now® Mineral can help. You'll get answers that go far beyond black and white.

Right Now® Mineral
The Answer to Beef Cow Nutrition



J&J Cattle Co. proudly recommends and sells Right Now® Mineral!

All J&J cattle are supplemented with Right Now® Mineral.



SALE TERMS AND CONDITIONS

Except for those stated in the below terms and conditions, there are no warranties, either expressed or implied, as to the merchantability or fitness for a particular purpose with respect to the cattle being sold at this auction.

The warranties and guarantees set forth in the "Terms and Conditions" are in lieu of all other warranties, either expressed or implied, and the remedies provided therein shall be the sole and exclusive remedy of the buyer, or any party claiming through buyer, for any breach of warranty or guarantee therein provided and all other obligations or liabilities.

BIDDING: Each animal will be sold to the highest bidder. The auctioneer will settle any disputes as to bids, and his decision on such matters shall be final.

TERMS: Terms of sale are cash unless satisfactory credit arrangements have been made with vendor previous to sale.

PURCHASER'S RISK: Each animal becomes the risk of the purchaser as soon as sold, but it shall be the obligation of the seller to see that animals are fed and cared for free of charge to purchaser until loaded for shipment or until the expiration of (48) hours after the sale, whichever occurs sooner.

CERTIFICATE OF REGISTRY: A transferred certificate of registry will be furnished to the purchaser of each animal after full settlement has been made. Calves born before the sale will be registered by the seller; calves born after the sale will be registered by the buyer. Proper breeding statements will be signed by the seller for registering calves born after the sale.

HERD HEALTH: All cattle will be accompanied by proper health certificates for immediate interstate shipment. All calves are wormed and vaccinated with a 7-way Clostridial, 4-way for BVD, IBR, PI3 and BRSV, and Pasteurella Bacterin Toxoid by three months of age and again at weaning. All females of age are officially calfhod vaccinated. Yearling heifers and the cow herd are wormed and vaccinated twice annually with a 7-way Clostridial, 4-way for BVD, IBR, PI3 and BRSV, and Lepto/Vibrio with Spirovac®. All cattle selling are up to date on vaccinations and worming.

ANNOUNCEMENTS: Any changes from information of any kind in the catalog will be announced from the auction box, and such announcements shall take precedence.

EXPECTED PROGENY DIFFERENCES (EPDs): The EPDs stated in the catalog were current at press time. However, we cannot guarantee that an animal's EPDs will be the same as listed herein, as they are constantly being updated.

BREEDING GUARANTEE:

1. All animals are guaranteed to be breeders with the exception of a) Calves under twelve (12) months of age; b) In the event of any injury or disease that occurs to the animal after sale; c) Gross negligence or willful misconduct on the part of the purchaser; or, d) Females used in embryo transplant.
2. Females sold as "safe in calf" have been examined by a competent veterinarian or other reproductive technician and are so guaranteed to be with calf and thus are considered breeders without further guarantee.
3. The yearling heifers and most of the spring-calving cows will have been bred A.I. by sale day but are not being sold as safe in calf. All fall-calving cows are being sold safe in calf. An updated breeding/calving report will be available sale day. Announcements made from the auction block will take precedence over all printed material.

4. Cows with calves at side are presumed to be breeders with no further fertility guarantee.

5. Any guarantee with respect to embryo transplant production shall be a separate agreement between buyer and seller.

6. Animals resold following purchase in this sale shall constitute a separate transaction, and the rights and obligations of the two parties connected thereto are not covered by the terms and conditions of this sale.

IDENTIFICATION:

1. Seller offers each animal with a readable tattoo corresponding to its registration.
2. Buyer agrees to check tattoos for accuracy.
3. In those cases where a nickname is used, it shall be accompanied by the official registered name and number of the animal.

OPTIONS AND PRIVILEGES OF RETURN OR ADJUSTMENT:

1. All claims for adjustments or refunds must be made in writing either within six (6) months of the date of the sale or no later than 6 months after the animal reaches eighteen (18) months of age, whichever occurs latter.
2. In the event that an animal is claimed to be a non-breeder, that animal must be returned to J&J Cattle Company in good condition and must have met the health requirements of the State of Oklahoma. The seller shall be entitled to 6 months trial following the return of the animal in which to prove that the animal is a breeder. If at the end of 6 months the seller has been unable to prove the animal as a breeder, the seller shall, at the option of the buyer, replace the animal with another of equal value or refund the total purchase price. The return of the purchase price shall in all cases be deemed as full settlement. Any expense incurred in transporting the animal that is claimed to be a non-breeder shall be the responsibility of the purchaser. If the seller proves the animal to be a breeder, it shall be the obligation of the purchaser to take delivery of the animal and pay all expenses incurred for transportation. The return of an animal at the expense of the purchaser with a refund of the purchase price made by the seller is in all cases considered to be a complete settlement.

RIGHTS AND OBLIGATIONS:

1. The above terms and conditions of sale shall constitute a contract between the buyer and seller of each animal and shall be equally binding upon both. Each sale or resale of an animal constitutes a separate transaction.
2. All persons who attend the sale do so at their own risk. Neither J&J Cattle Co., the sale manager nor any other person connected with the sale assumes liability, legal or otherwise, for accidents or loss of property.

Catalog Abbreviations

PRODUCTION EPDs:

BW EPD—Birth Weight, expressed in pounds.

WW EPD—Weaning Weight Direct, expressed in pounds.

YW EPD—Yearling Weight, expressed in pounds.

SC EPD—Scrotal Circumference, expressed in centimeters.

Milk EPD—Weaning Weight Maternal, expressed in pounds, is a predictor of an animal's genetic merit for milk and mothering ability. In other words, it is that part of weaning weight attributed to milk and mothering ability.

ULTRASOUND EPDs:

Derived from real time ultrasound scanning measurements processed through Centralized Ultrasound Processing (CUP).

%IMF EPD—Intramuscular Fat is a predictor of the difference in an animal's progeny for percent intramuscular fat in the ribeye muscle.

UREA EPD—Ribeye Area is a predictor of the differences in square inches of ribeye area of an animal's progeny.

\$VALUE INDEXES: Expressed in dollars per head, \$Values are multi-trait selection indexes to assist commercial beef producers by adding simplicity to genetic selection decisions.

\$WEAN—Weaned Calf Value. Prewaning merit, based on both revenue and cost adjustments for birth weight, weaning weight, milk and mature cow size.

\$FEEDLOT—Feedlot Value. Postweaning performance.

\$GRID—Grid Value. Carcass grid merit, based on Carcass and/or Ultrasound EPDs.

\$BEEF—Beef Value. Combines contributions of \$F and \$G.

\$Values should be used to complement the criteria that producers already use when making selections. For additional information, contact the American Angus Assn., (816) 383-5100, or visit their web site: www.angus.org



*J&J Cattle Co.
appreciates the support
of these suppliers!*



STILLWATER MILLING CO.
(405) 372-2766
(800) 364-1671
Address:
502 East Sixth Street
Stillwater, OK 74074

REPRODUCTION SERVICES

Embryo Transfer Fee Schedule

Flush fee.....\$300*
Freeze fee.....\$40**
Transfer fee.....\$55

*If no grade 1s or 2s are collected,
flush fee is reduced to \$175

**\$40 per embryo up to \$400

Ultrasound Services

Carcass ultrasound.....\$15/head
Fetal sexing.....\$10/head
Fetal aging.....\$5/head

- On-farm services available
- No group too small

Call us about A.I. and palpation training schools.

Reproduction Enterprises, Inc.
908 N. Prairie Rd. Stillwater, OK 74075
1-866-REI-BULL 1-405-377-8037
Fax: (405) 377-4541
www.reproductionenterprises.com





Sydney Johnson

Thanks for Attending!

We appreciate your interest and support of our program. Our goal is customer satisfaction, and we are here to help you find cattle that will work in your program.

Please give us a call if we can be of service!

(405) 880-1902



Charley Johnson



Mark & Brenda Johnson, Sydney & Charley
Ken & June Jackson
Route 1, Box 8, Orlando, OK 73073
(405) 880-1902, Cell
(580) 455-2256, Home & Fax
info@jandjcattle.com, E-mail
www.jandjcattle.com, Web site

Thanks to the following for sponsoring meals at the J&J Sale:

Cargill Right Now® Mineral — Shane Emberson, (405) 205-7782

Farm Credit, Enid, Oklahoma — Fred Slater, (580) 231-0666

Reproduction Enterprises, Inc., Stillwater, Oklahoma — Les Hutchens, (405) 377-8037

Stillwater Milling Company — Rob Bauter, (405) 372-2766

Special thanks to:

TransOva Genetics, Crescent, Oklahoma — Kim Harsh, (405) 969-2594

. . . Sponsoring a free flush to the buyer of the high selling female!



J&J
CATTLE CO.
Route 1, Box 8
Orlando, OK 73073

FIRST CLASS
U.S. POSTAGE
PAID
PERMIT #1541
OKLA. CITY,
OKLAHOMA

First Class Mail
TIME-DATED: PLEASE DO NOT DELAY

www.jandjcattle.com



First Annual Production Sale • Saturday, May 13, 2006