



J&J

CATTLE CO.



Complete Dispersal

128 Head... 52 Angus Lots

Saturday, May 22, 2010

12 Noon • Orlando, Oklahoma

EMBRYO & SEMEN AUCTION • 7:30 P.M., FRIDAY, MAY 21



Complete Dispersal

Saturday, May 22, 2010

12 Noon • Orlando, Oklahoma

At J&J Cattle Company, located on the south side of State Highway 51, just 1-1/2 miles west of Interstate 35 (Exit 174). Look for our signs and the red barn on top of the hill.

FRIDAY, MAY 21

1 p.m. til dark Cattle on display
Food and beverages available
5:30 p.m. Dinner
7:30 p.m. . . . **Embryo and Semen Auction**

SATURDAY, MAY 22

7:30 a.m. Coffee, juice and pastries
9:00 a.m. Cattle on display
11:00 a.m. Lunch
12:00 noon **J&J Dispersal**

Selling

Show & Donor Prospects
Proven Donors & Pregnancies
Spring Bred Heifers
Fall & Spring Pairs
Bred Cows
Fall Heifer Calves
Embryos & Semen

Sale Guests

A-CROSS RANCH

P.O. Box 765, Elk City, OK 73648
LaRue Switzer, Owner

Lucas Reinhart, Registered Cow Herd
(405) 714-2118, Cell • (580) 473-9179, Ranch
Cindy Pribil, Herd Consultant
(405) 853-5232, Cell • (405) 853-6544, Home

BLACK GOLD ANGUS

13595 North Mount Olive Road
Centerton, AR 72719
John Freeman, Owner
(479) 366-3409, Cell

Recommended Hotels

Sleep Inn & Suites, 414 Heather Road, Guthrie, OK, (405) 260-1400.
Easy access from I-35 Exit 157, approximately 17 miles south of the ranch.
Quality Inn, 2515 West 6th Avenue, Stillwater, OK, (405) 372-0800.
Approximately 17 miles east of the ranch on Hwy. 51.

Air Transportation

Will Rogers World Airport in Oklahoma City is 45 minutes from the ranch and is served by most major airlines. For assistance with travel arrangements, please call Brenda Johnson, (405) 880-5887.

Special Sale Guests

Scott Dewald, Executive Vice President, Oklahoma Cattlemen's Association
Jarold Callahan, Treasurer, American Angus Association
Bill Majors, President, Oklahoma Angus Association
Dr. Robert Whitson, Vice President, Dean and Director,
OSU College of Agricultural Sciences and Natural Resources
Dr. Ron Kensinger, Head, OSU Department of Animal Science
Drs. Robert Totusek & Donald Wagner, Heads Emeritus,
OSU Department of Animal Science

Sale Managers



(405) 840-5461 Office
(405) 641-6081 Cell
(405) 370-7461 Fax
1019 Waterwood Pkwy, Suite D
Edmond, OK 73034
E-mail: matt@mcsauction.com
www.mcsauction.com

Sale Staff

Eddie C. Sims, Auctioneer, (580) 595-1626
Matt Sims, Auctioneer, (405) 641-6081
Matt Caldwell, *Angus Journal*, (913) 755-1105
Chisolm Kinder, *Oklahoma Cowman*, (405) 235-4391; (405) 747-4683
Doug Paul, *The Stock Exchange*, (405) 820-3982
John Andras, *Weekly Livestock Reporter*, (817) 789-7352
Juston Stelzer, Stelzer Services, (817) 992-7059
Delvin Heldermon, Heldermon Enterprises, (405) 205-1116

Sale Consultants

Jeff Mafi (405) 269-6387; Cindy Pribil (405) 853-5232; Dustin Layton (405) 464-2455

Acknowledgements

Cattle Photography—Matt Sims, (405) 641-6081
Sale Advertising and Catalog—Southwest TypeStyles, (405) 381-3591

All persons who attend the sale do so at their own risk. Neither J&J Cattle Co., the sale managers nor any other person connected with the sale assumes liability, legal or otherwise, for accidents or loss of property.



Mark & Brenda Johnson, Sydney & Charley
June Jackson
23001 N. Douglas, Orlando, OK 73073
(405) 880-1902, Cell
(580) 455-2256, Home & Fax
info@jandjcattle.com, E-mail
www.jandjcattle.com, Web site

Dear Friends and Fellow Cattlemen:

With a sad heart I invite you to join us for the complete and total dispersal of Jackson and Johnson Cattle Company, LLC. Ken Jackson, my friend and partner in J&J, passed away unexpectedly on April 2nd, 2010. Therefore, this sale will include all the jointly owned cattle—from the donors down to the spring 2010 ET calves, as well as the embryos and semen. The end of this joint venture in the Angus business represents a rare and unique opportunity for you to select and acquire from our genetic base in its entirety.

Ken Jackson was a trusted friend and a man whom I respected immensely. When we met 16 years ago, he had a vision and a plan for what he wanted to accomplish in the Angus business. I consider myself blessed to have known and worked with Ken in helping to carry out his plan. That being stated, J&J would have never been possible without his lasting commitment to the Angus business.

This is a very good set of cattle. They are the result of working with great cow families and using records to generate cattle ranking in the upper percentiles for genetic potential. Most importantly, these cattle have the look, power and visual quality that I am confident you will like.

I would like to take this opportunity to express my appreciation to our sale guests—John Freeman of Black Gold Angus along with LaRue Switzer and the A-Cross crew—for their great consignments. Thanks also to our neighbors for all their help throughout the year; we couldn't do it without you!

As always, I appreciate the time you are taking to look at this catalogue and check out our program. You are welcome to visit anytime between now and sale day. The cattle are all near the sale barn and ready for viewing at your convenience.

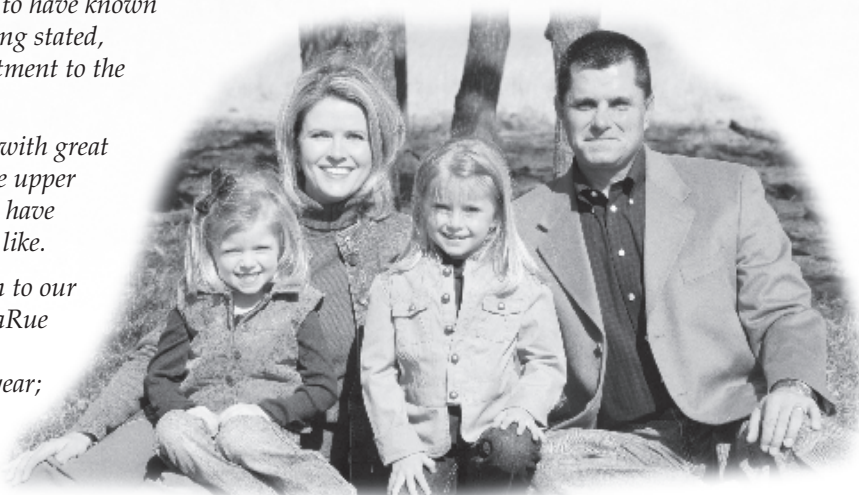
Sincerely,

Mark Johnson

Please note that the entire J&J herd is selling. If you have questions about any of the cattle, please call. I look forward to hearing from you!



The late Ken Jackson,
former J&J partner



The Mark Johnson Family

From left: Charley, Brenda, Sydney and Mark

Watch and bid online!



Sale Day Phones Mark Johnson cell (405) 880-1902 • Matt Sims cell (405) 641-6081 • Eddie Sims cell (580) 595-1626

Sale Terms and Conditions: This being a dispersal, all J&J Cattle Co. lots will sell without guarantee; however, all known defects will be called. The Black Gold and A-Cross consignments (Lots 34–52) will sell under current Suggested Terms and Conditions of the American Angus Association, which can be found at www.angus.org.

Absentee Bids: If you would like to place a bid on any lot but will not be able to be with us, please join us online both Friday evening and Saturday at www.LiveAuctions.tv. You may also direct your phone bid to the owners, the sale manager, sale consultants or any other member of the sale staff.

Livestock Transportation: Livestock haulers believed to be reliable will be available to assist you in the delivery of your purchases. We recommend that insurance be obtained on lots purchased, which will be available at the clerk's desk.

Herd Health: All cattle will be accompanied by proper health certificates for immediate interstate shipment. All J&J calves are wormed and vaccinated with a 7-way Clostridial, 4-way for BVD, IBR, PI3 and BRSV, and

Pasteurella Bacterin Toxoid by three months of age and again at weaning. All females of age are officially calfhound vaccinated. Yearling heifers and the cow herd are wormed and vaccinated twice annually with a 7-way Clostridial, 4-way for BVD, IBR, PI3 and BRSV, and Lepto/Vibrio with Spirovac®. All cattle selling are up to date on vaccinations and worming.

Breeding Information: The yearling heifers and most of the spring-calving cows will have been bred AI by sale day but are not being sold as safe in calf. An updated breeding report will be available sale day. Announcements made from the auction block will take precedence over all printed material.

Note about the 2010 spring-born ET calves selling:

The spring-born ET calves will be weaned by July 31, 2010 and can be picked up any time between August 1 and August 31, 2010. Calves not picked up by August 31 will be subject to a \$2 per day boarding fee. If any spring 2010 ET calf dies prior to August 1, purchase price will be refunded.



Friday Night

EMBRYO & SEMEN AUCTION

May 21, 2010 • 7:30 p.m.

Friday, May 21, the cattle will be on display and we will have a pre-sale social that evening, including plenty of good food and refreshments. It is always a good time and we hope everyone can attend.

AT 7:30 P.M., THE ENTIRE J&J EMBRYO AND SEMEN INVENTORIES WILL SELL!



J&J Queen 414



J&J OT26 Rita 48T



J&J Blanche 764



J&J 6807 Dixie 012



2 Bar New Design 1407 3352



VAR Rita 6100

EMBRYO OFFERING:

OSU Currency 8173 × J&J Queen 414 (6 embryos) . . . 414 sells Saturday as Lot 1

3C Macho M450 BZ (PB SM) × J&J Queen 414 (6 embryos) . . . 414 sells Saturday as Lot 1

OSU Currency 8173 × J&J 6807 Dixie 012 (2 embryos) . . . 012 sells Saturday as Lot 9

SAV Bismarck 5682 × J&J OT26 Rita 48T (6 embryos) . . . 48T sells Saturday as Lot 10

SAV Bismarck 5682 × VAR Rita 6100 (6 embryos) . . . 6100 sells Saturday as Lot 11

Rito 6EM3 of 4L1 Emblazon × VAR Rita 6100 (4 embryos) . . . 6100 sells Saturday as Lot 11

GDAR Traveler 044 × 2 Bar New Design 1407 3352 (4 embryos)

GAR Predestined × J&J Blanche 764 (3 embryos)

Bring Your Semen Tank!

SEMEN OFFERING:

EXAR Sudden Impact 1537
22 units

Tehama Bando 155
22 units

GDAR Traveler 044
10 units

RR Traveler 5204
6 units

E&B 1483 Scotchman 5041
7 units

OSU Total Impact 4112
8 units

Scotch Cap
3 units

TC Total 410
2 units

Garret's Nationwide 8001
8 units

SAV Pioneer 7301
6 units

Rito 112 of 2536 Rito 6I6
16 units

SS Objective T510 OT26
3 units



OSU Currency 8173



SAV Bismarck 5682

REF. OSU Currency 8173 [AMF-NHF]
 CALVED: 3/03/2008 • BULL: +16049485 • TATTOO: 8173

Boyd On Target 1083 [AMF-NHF] #+SAF 598 Bando 5175 [AMF]
 Stevenson Moneymaker R185 [AMF-NHF] +Boyd Forever Lady 7095
 #Stevenson Clova Pride L888 [AMF-NHF] VDAR Ambush 2478
 Stevenson Clova Pride 712H

#+Northern Improvement 4480 GF [AMF-NHF] #TC Stockman 365
 +OSU Empress 4123 Blackcap of RR 5367
 +OSU 2928 Empress 4177 #Papa Equator 2928 [AMF-NHF]
 +DF Empress 6079

BW EPD	WW EPD	YW EPD	MILK EPD	MRB EPD	RE EPD	SW	SF	SG	S8
+2.7	+53	+98	+21	+20	+05	+24.99	+36.05	+17.12	+41.26

AI sire.

REF. SAV Bismarck 5682 [AMF-NHF]
 CALVED: 2/01/2005 • BULL: +15109865 • TATTOO: 5682

#GDAR Traveler 044 [AMF-NHF] #DHD Traveler 6807 [AMF-NHF]
 #+GAR Grid Maker [AMF-NHF] #GDAR Blackcap Lady 840
 GAR Precision 2536 [AMC-NHF] #GAR Precision 1680 [AMC-NHC]
 +GAR EXT 2104

#Schoenes Fix It 826 [AMF-NHF] #AAR New Trend
 SAV Abigale 0451 Sky High Blackbird 4119
 SAV Abigale 6062 #Bon View Emulation EXT 473 [AMF-NHF]
 Circle A Abigale 3008

BW EPD	WW EPD	YW EPD	MILK EPD	MRB EPD	RE EPD	SW	SF	SG	S8
+0.1	+57	+101	+25	+01	+54	+32.15	+37.54	+16.22	+34.25

AI sire.

REF. Northern Improvement 4480 GF [AMF-NHF]
 CALVED: 3/14/1998 • BULL: #+13054003 • TATTOO: 4480

#TC Stockman #+Leachman Prompter [AMF-NHF]
 #TC Stockman 365 #TC Jestress 6004
 TC Pride 0014 #VDAR New Trend 315 [AMF-NHF]
 #TC Pride 8013

RR Vantage 3352 Shoshone Vantage JB23
 Blackcap of RR 5367 #Dixie Erica of RR 9222
 Blackcap of RR 0238 Shoshone Vantage JB23
 Blackcap of R R 7020

BW EPD	WW EPD	YW EPD	MILK EPD	MRB EPD	RE EPD	SW	SF	SG	S8
-0.6	+38	+69	+25	+11	-04	+33.78	+13.50	+16.08	+36.31

AI sire.

REF. J&J Moneymaker 8132
 CALVED: 3/25/2008 • BULL: +16233649 • TATTOO: 8132

Boyd On Target 1083 [AMF-NHF] #+SAF 598 Bando 5175 [AMF]
 Stevenson Moneymaker R185 [AMF-NHF] +Boyd Forever Lady 7095
 #Stevenson Clova Pride L888 [AMF-NHF] VDAR Ambush 2478
 Stevenson Clova Pride 712H

#+Northern Improvement 4480 GF [AMF-NHF] #TC Stockman 365
 J&J Queen 414 Blackcap of RR 5367
 +J&J Queenie 9206 #+A&B Yukon 7150 [AMF-NHF]
 C&C Queen 418

BW EPD	WW EPD	YW EPD	MILK EPD	MRB EPD	RE EPD	SW	SF	SG	S8
+3.2	+53	+101	+17	+23	-16	+21.90	+39.15	+11.95	+36.71

Herd sire for J&J and McMurphy Farms.

REF. Basin Spread 304T [AMF-NHF]
 CALVED: 2/09/2007 • BULL: 15690358 • TATTOO: 304T

#Gardens Expedition [AMF-NHF] #N Bar Emulation EXT [AMF-NHF]
 Basin Expedition 768J Green Garden Gina 2268 S2
 Basin Primrose Lady 5287 #Basin Ambush 3905 [AMF-NHF-RDF]
 Basin Primrose Lady 296E

#CA Future Direction 5321 [AMC-NHC] #GAR Precision 1680 [AMC-NHC]
 +Basin Lucy 3829 [AMF-NHF] CA Miss Power Fix 308 [AMF]
 Basin Lucy 178E #Basin Max 602C [AMF-NHF]
 #Basin Lucy 855A

BW EPD	WW EPD	YW EPD	MILK EPD	MRB EPD	RE EPD	SW	SF	SG	S8
-0.1	+49	+95	+24	+39	-02	+29.36	+34.57	+21.82	+34.35

AI sire and A-Cross Ranch herd sire.

REF. J&J New Look 8118 [NHF]
 CALVED: 2/18/2008 • BULL: +16233653 • TATTOO: 8118

#Bon View New Design 1407 [AMF-NHF] #B/R New Design 036 [AMF-NHF]
 #+EXAR New Look 2971 [AMF-NHF] Bon View Pride 664
 N Bar Primrose 2424 #Emulation 31 [DWF-RDF]
 Primrose N Bar 9962

#Twin Valley Precision E161 [NHC-AMF-RDF] #GAR Precision 1680 [AMC-NHC]
 J&J E161 Oakleaf 303 +WCC Blackcap C9 [RDC]
 +J&J Oakleaf 117 #+A&B Yukon 7150 [AMF-NHF]
 WAF Rally Oakleaf 5144

BW EPD	WW EPD	YW EPD	MILK EPD	MRB EPD	RE EPD	SW	SF	SG	S8
+3.3	+47	+93	+19	+38	+31	+20.54	+33.33	+27.28	+54.32



MCS

Lot 1 J&J Queen 414

1

J&J Queen 414

CALVED: 1/29/2004 • COW: +14694435 • TATTOO: 414

#TC Stockman 365
#Northern Improvement 4480 GF [AMF-NHF]
Blackcap of RR 5367

#TC Stockman
TC Pride 0014
RR Vantage 3352
Blackcap of RR 0238

#A&B Yukon 7150 [AMF-NHF]
+J&J Queenie 9206
C&C Queen 418

#Krugerrand of Donamere 490 [AMF-NHF]
+A&B Queen 4173
Bando of Conanga 573
WK Queen 2147

BW EPD	WW EPD	YW EPD	MILK EPD	MRB EPD	RE EPD	SW	SF	SG	S8
+2.6	+43	+84	+15	+12	-.27	+20.74	+25.91	+11.44	+37.30

Proclaimed by many as Northern Improvement's greatest daughter, this female is proven to generate unparalleled "look," quality, structural soundness and power. She is the dam of the reigning Reserve National Champion Percentage Simmental heifer, WLTR Lydia, and WLTR Renegade, the 2010 National Western Stock Show Reserve Grand Champion Percentage Simmental Bull. She has also produced Angus sons working as herd sires at Limestone, Pembroke Cattle Co. and McMurphy Brothers. Only because this is a dispersal is 414 selling.

- A signature donor that can give your operation instant identity!
- Flushed seven times at J&J, producing 49 high quality embryos.
- Breeding information available sale day.
- Co-owned with Chuck Medows and Carl Johnson. Selling full interest and full possession.

*Queen 414 is made
for those who enjoy
looking at cows!*



The Friday Night Embryo Auction will include 414's embryos by OSU Currency as well as SimAngus embryos by 3C Macho.



WLTR Lydia 39U ET Maternal sister to Lots 1A–B, owned by Walter Cattle Co. and Gilbert Cattle Co.
 ... Current Reserve National Champion Percentage Simmental Female



WLTR Renegade 40U ET
 Maternal brother to Lots 1A–B,
 owned by Walter Cattle Co.
 ... 2010 Denver Reserve National Champion
 Percentage Simmental Bull

1A **J&J 003**
 CALVED: 1/21/10 • BULL: SimAngus • TATTOO: 003
 • BW 83 lbs.

1B **J&J 013**
 CALVED: 1/27/10 • BULL: SimAngus • TATTOO: 013

DOY Livewire 18M	PVF-BF BF26 Black Joker
OSU High Roller 8608	WFL Black Lady 505H
OSU Lucky Lady 2615	GW Lucky Dice 187H
	OSU Miss Light 7620
#+Northern Improvement 4480 GF [AMF-NHF]	#TC Stockman 365
J&J Queen 414	Blackcap of RR 5367
+J&J Queenie 9206	#+A&B Yukon 7150 [AMF-NHF]
	C&C Queen 418

• BW 78 lbs.

*Two powerful SimAngus
 herd sire prospects!*

Lots 1A and 1B are maternal brothers to the Reserve Grand Champion Percentage Simmental Bull at this year's National Western Stock Show in Denver. Sired by the high selling bull in the 2009 OSU Cowboy Classic, these prospects offer tremendous width and mass in tandem with exceptionally correct structural base. Tremendous upside potential in these young sons of Queen 414!

• Co-owned with Chuck Medows and Carl Johnson.
 Selling full interest and full possession.



J&J Queen 6119 Daughter of Lot 2; several maternal sisters sell
 ... Selected by Macy Griswold in our 2007 sale, 6119 went on to be named Grand Champion Heifer at the 2007 Tulsa State Fair Junior Angus Show.

2

J&J Queenie 9206

CALVED: 9/02/1999 • COW: +13412890 • TATTOO: 9206

#Krugerrand of Donamere 490 [AMF-NHF]
 #A&B Yukon 7150 [AMF-NHF]
 +A&B Queen 4173

#CH Stacker 7040
 Donamere Bachel Beauty 288
 #CH Stacker 7040
 A&B Maxima Queen 2007

Bando of Conanga 573
 C&C Queen 418
 WK Queen 2147

#Tehama Bando 155 [AMF-NHF]
 #Bashful Maid of Conanga
 WK Rito 0290
 WK Queen 9311

BW EPD	WW EPD	YW EPD	MILK EPD	MRB EPD	RE EPD	SW	Sf	Sg	Sb
+5.4	+51	+102	+9	+19	-.43	+11.86	+40.99	+8.25	+39.93

9206—the mother of the 414 Lot 1 cow and family matriarch of the Queen cows featured as Lots 1 through 4—is the highest revenue generating cow at J&J. She and the great DF Empress 6079 stand apart from all other cows I have worked with in their unrivaled ability to transmit power, body mass and structural width. 9206 has been and remains today a truly dynamic breeding piece that literally out produces herself in each generation, regardless of mating. As you evaluate her daughters, notice the pattern and balance she adds to each mating.

- Flushed 24 times, producing 136 high quality embryos (including six embryos in six flushes over the past 18 months).
- Breeding information available sale day.



J&J Queen 867
 Daughter of Lot 2 and maternal sister to Lots 1, 2A-2B-2C-2D, 3A-3B, 4A-4B;
 full sister to Lot 2E

Queen Family

The three embryo sisters sired by the American Royal, North American and National Western Champion Titlelist and selling as Lots 2A-2B-2C have been favorites of many J&J visitors over the past year.



MCS

Lot 2A J&J Queen 9044

Pedigree for Lots 2A-2B-2C:

#BR Midland [AMF-NHF]
EXAR Titlelist T011 [AMF-NHF]
EXG Blackcap R054 R3

#Twin Valley Precision E161 [NHC-AMF-RDF]
BR Royal Lass 7036-19
EXAR Sudden Impact 1537 [AMF-NHF]
EXG Blackcap N145 R3

#+A&B Yukon 7150 [AMF-NHF]
+J&J Queenie 9206
C&C Queen 418

#Krugerrand of Donamere 490 [AMF-NHF]
+A&B Queen 4173
Bando of Conanga 573
WK Queen 2147

2A

J&J Queen 9044

CALVED: 3/04/2009 • COW: +16574025 • TATTOO: 9044

BW EPD	WW EPD	YW EPD	MILK EPD	MRB EPD	RE EPD	\$W	\$F	\$G	\$B
+3.5	+50	+97	+15	+49	-.09	+19.77	+36.22	+26.26	+48.93

- A very unique Angus female with respect to bone and power! 9044 recorded the high REA scan in her contemporary group.
- BW 84 lbs. Adj. WW 697 lbs. Adj. IMF 4.14%. Adj. REA 12.4 sq. in.
- Breeding information available sale day.

2D

J&J Queen 887

CALVED: 9/05/2008 • COW: +16288234 • TATTOO: 887

#SS Traveler 6807 T510 [AMF-NHF]
#SS Objective T510 OT26 [AMF-NHF]
SS Miss Rita R011 7R8 [AMF-NHF]

#DHD Traveler 6807 [AMF-NHF]
#SS Miss Hi Spade A114
SS Rito Rito R76 R011
SS Miss Ultress U56

#+A&B Yukon 7150 [AMF-NHF]
+J&J Queenie 9206
C&C Queen 418

#Krugerrand of Donamere 490 [AMF-NHF]
+A&B Queen 4173
Bando of Conanga 573
WK Queen 2147

BW EPD	WW EPD	YW EPD	MILK EPD	MRB EPD	RE EPD	\$W	\$F	\$G	\$B
+3.3	+61	+114	+19	+46	-.05	+23.63	+49.63	+28.20	+54.44

- 887 is a stout Objective x Queenie 9206 daughter that ranks in the breed's best 2% for WW, YW and \$F genetics and the best 15% for \$B.
- Bred AI 11/26/2009 to Northern Improvement 4480 GF. Safe in calf.



MCS

Lot 2B

J&J Queen 9040

2B

J&J Queen 9040

CALVED: 2/26/2009 • COW: +16574024 • TATTOO: 9040

BW EPD	WW EPD	YW EPD	MILK EPD	MRB EPD	RE EPD	\$W	\$F	\$G	\$B
+3.5	+50	+97	+15	+50	-.11	+19.77	+36.22	+25.01	+47.68

- BW 75 lbs. Adj. WW 665 lbs. Adj. IMF 4.22%. Adj. REA 12.1 sq. in.
- Breeding information available sale day.

2C

J&J Queen 9031

CALVED: 2/20/2009 • COW: +16574023 • TATTOO: 9031

BW EPD	WW EPD	YW EPD	MILK EPD	MRB EPD	RE EPD	\$W	\$F	\$G	\$B
+3.5	+50	+97	+15	+50	-.13	+19.77	+36.22	+24.97	+47.64

- BW 73 lbs. Adj. WW 683 lbs. Adj. IMF 4.47%. Adj. REA 9.7 sq. in.
- Breeding information available sale day.

2E

J&J Queen 862

CALVED: 3/20/2008 • COW: +16168376 • TATTOO: 862

Boyd On Target 1083 [AMF-NHF]
Stevenson MoneyMaker R185 [AMF-NHF]
#Stevenson Clova Pride L888 [AMF-NHF]

#+SAF 598 Bando 5175 [AMF]
+Boyd Forever Lady 7095
VDAR Ambush 2478
Stevenson Clova Pride 712H

#+A&B Yukon 7150 [AMF-NHF]
+J&J Queenie 9206
C&C Queen 418

#Krugerrand of Donamere 490 [AMF-NHF]
+A&B Queen 4173
Bando of Conanga 573
WK Queen 2147

BW EPD	WW EPD	YW EPD	MILK EPD	MRB EPD	RE EPD	\$W	\$F	\$G	\$B
+4.6	+57	+110	+14	+29	-.29	+17.74	+47.00	+14.80	+41.67

- 862 is a huge, stout two-year-old daughter of MoneyMaker with tremendous udder quality. Heavy boned and big footed, she ranks in the breed's best 2% for YW and \$F. A genuine donor in the making here.

Lot 2EE Bull calf born 4/09/2010, tattoo 033, by J&J New Look 8118. BW 80 lbs.



BR Midland Sire of Lots 3A-3B

Lot 3A J&J Queen 613

3A

J&J Queen 613

CALVED: 2/04/2006 • COW: +15507090 • TATTOO: 613

#Twin Valley Precision E161 [NHC-AMF-RDF]
#BR Midland [AMF-NHF]
BR Royal Lass 7036-19

#GAR Precision 1680 [AMC-NHC]
+WCC Blackcap C9 [RDC]
#+SAF Neutron [AMF-NHF]
#SAF Royal Lass 7036

#+A&B Yukon 7150 [AMF-NHF]
+J&J Queenie 9206
C&C Queen 418

#Krugerrand of Donamere 490 [AMF-NHF]
+A&B Queen 4173
Bando of Conanga 573
WK Queen 2147

BW EPD	WW EPD	YW EPD	MILK EPD	MRB EPD	RE EPD	SW	SF	SG	SB
+1+3.6	+1+49	+1+94	+1+9	+0.35	-0.13	+17.47	+33.56	+19.32	+42.14

613 is a tremendous individual from a great flush at J&J. Two flush sisters were our highest and third highest selling yearling heifers in the 2007 sale. Correctly structured and sound footed, 613 is the dam of the outstanding set of fall-born heifer calves by Raven selling as Lots 3C-3E. Tremendous udder quality and strong maternal performance—balances a birth ratio of 96 with a weaning ratio of 112.

- Flushed three times, producing 18 high quality embryos.
- Breeding information available sale day.

3B

J&J Queen 708

CALVED: 1/25/2007 • COW: +15856845 • TATTOO: 708

#Twin Valley Precision E161 [NHC-AMF-RDF]
#BR Midland [AMF-NHF]
BR Royal Lass 7036-19

#GAR Precision 1680 [AMC-NHC]
+WCC Blackcap C9 [RDC]
#+SAF Neutron [AMF-NHF]
#SAF Royal Lass 7036

#+A&B Yukon 7150 [AMF-NHF]
+J&J Queenie 9206
C&C Queen 418

#Krugerrand of Donamere 490 [AMF-NHF]
+A&B Queen 4173
Bando of Conanga 573
WK Queen 2147

BW EPD	WW EPD	YW EPD	MILK EPD	MRB EPD	RE EPD	SW	SF	SG	SB
+1+3.6	+1+49	+1+94	+1+9	+0.45	-0.18	+17.47	+33.56	+21.44	+40.07

708 is a full sister to the donor selling as Lot 3A. This Midland daughter offers tremendous look and pattern. Her fall 2009 bull calf by Spartan sold private treaty at weaning for \$2,000.

- Breeding information available sale day.

3AA

J&J Queen 9111

CALVED: 11/28/2009 • COW: 16574015 • TATTOO: 9111

BC 7022 Raven 7965 [AMF-NHF]
+J&J Reality 791
+EXAR Empress 7630

BC Marathon 7022 [AMF-NHF]
OCC Blackbird 796F
#+Krugerrands Moneyline
+DF Empress 6079

#BR Midland [AMF-NHF]
+J&J Queen 613
+J&J Queenie 9206

#Twin Valley Precision E161 [NHC-AMF-RDF]
BR Royal Lass 7036-19
#+A&B Yukon 7150 [AMF-NHF]
C&C Queen 418

BW EPD	WW EPD	YW EPD	MILK EPD	MRB EPD	RE EPD	SW	SF	SG	SB
+1+2.3	+1+53	+1+10	+1+26	+1+11					

9111 is the natural calf of the 613 donor. This is the youngest fall-born heifer selling. She is a little green but descends from a great cow family and has potential.

- BW 75 lbs. Adj. WW 747 lbs.
- Sells open.



BC 7022 Raven 7965 His daughters and granddaughters sell

Queen Family



MCS

Lot 3C J&J Queen 9064

Pedigree for Lots 3C-3D-3E:

BC Marathon 7022 [AMF-NHF]	OCC Kirby 633K
BC 7022 Raven 7965 [AMF-NHF]	Gibbet Hill Mignonne E37
OCC Blackbird 796F	#OCC Bonanza 880B
	OCC Blackbird 779A
#BR Midland [AMF-NHF]	#Twin Valley Precision E161 [NHC-AMF-RDF]
+J&J Queen 613	BR Royal Lass 7036-19
+J&J Queenie 9206	#+A&B Yukon 7150 [AMF-NHF]
	C&C Queen 418

BW EPD	WW EPD	YW EPD	MILK EPD	MRB EPD	RE EPD	SW	SF	SG	S8
				+1.33	+1.20				

3C

J&J Queen 9064

CALVED: 9/02/2009 • COW: +16575303 • TATTOO: 9064

- Elite show potential in this female! Incredible pattern and look from the profile. Big for her age and good bodied with a tremendous hind leg, this heifer will compete at the national level and in time will offer tremendous earning potential as a cow. Her calm disposition makes her well suited to a junior of any age. Featured in our ads.
- BW 69 lbs. Adj. WW 706 lbs.
- Sells open.

3D

J&J Queen 9066

CALVED: 9/02/2009 • COW: +16575304 • TATTOO: 9066

- BW 80 lbs. Adj. WW 667 lbs.
- Sells open.

3E

J&J Queen 9069

CALVED: 9/03/09 • COW: +16575305 • TATTOO: 9069

- BW 72 lbs. Adj. WW 626 lbs.
- Sells open.



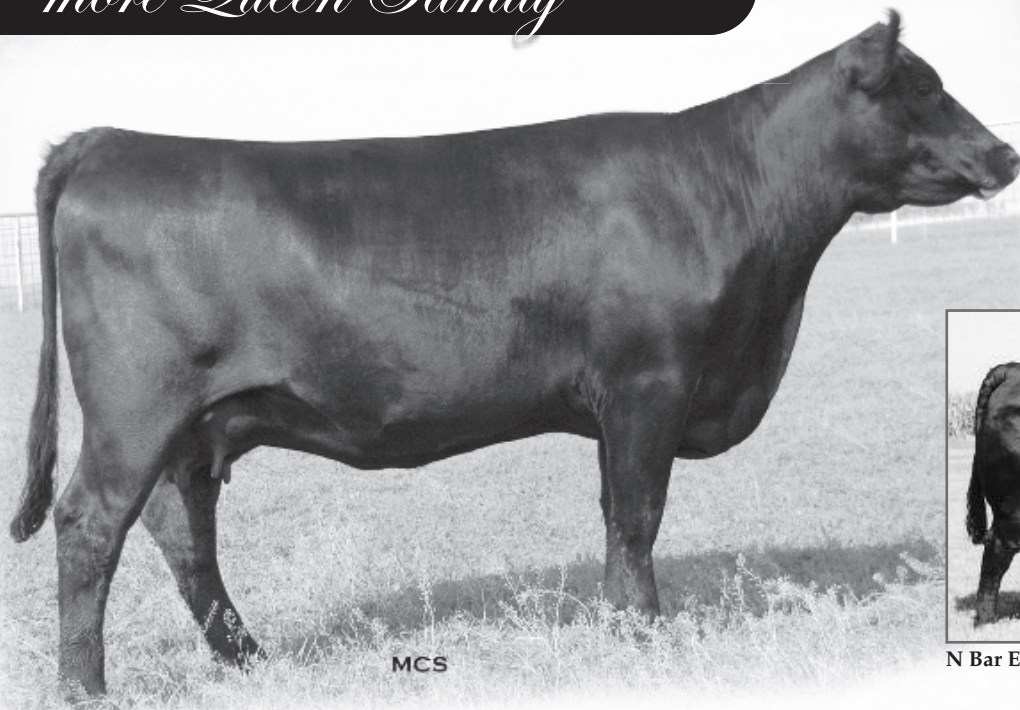
MCS

Lot 3D J&J Queen 9066



MCS

Lot 3E J&J Queen 9069



MCS



N Bar Emulation EXT Sire of Lots 4A-4B

Lot 4A J&J Queen 7001

4A J&J Queen 7001

CALVED: 11/05/2007 • COW: +15969021 • TATTOO: 7001

#Emulation N Bar 5522
#N Bar Emulation EXT [AMF-NHF]
N Bar Primrose 2424

#Emulation 31 [DWF-RDF]
Ankony 8F78 Lass 8F275
#Emulation 31 [DWF-RDF]
Primrose N Bar 9962

##A&B Yukon 7150 [AMF-NHF]
+J&J Queenie 9206
C&C Queen 418

#Krugerrand of Donamere 490 [AMF-NHF]
+A&B Queen 4173
Bando of Conanga 573
WK Queen 2147

BW EPD	WW EPD	YW EPD	MILK EPD	MRB EPD	RE EPD	\$W	\$F	\$G	\$B
I+3.7	I+47	I+91	I+14	+1.6	-1.4	+18.74	+31.32	+7.63	+35.38

An outstanding young donor with tremendous upside and long-term earning potential! Sired by breed legend EXT, 7001 has a great udder and teat quality coupled with an extremely functional structural base. Calm disposition.

- Flushed twice, producing eight high quality embryos.
- Breeding information available sale day.



MCS

J&J Queen 754

This full sister to Lots 4A-4B sold in our 2008 sale.

4B J&J Queen 799

CALVED: 11/04/2007 • COW: +15969020 • TATTOO: 799

#Emulation N Bar 5522
#N Bar Emulation EXT [AMF-NHF]
N Bar Primrose 2424

#Emulation 31 [DWF-RDF]
Ankony 8F78 Lass 8F275
#Emulation 31 [DWF-RDF]
Primrose N Bar 9962

##A&B Yukon 7150 [AMF-NHF]
+J&J Queenie 9206
C&C Queen 418

#Krugerrand of Donamere 490 [AMF-NHF]
+A&B Queen 4173
Bando of Conanga 573
WK Queen 2147

BW EPD	WW EPD	YW EPD	MILK EPD	MRB EPD	RE EPD	\$W	\$F	\$G	\$B
I+3.7	I+47	I+91	I+14	+2.0	-1.6	+18.74	+31.32	+9.13	+37.29

799 is a flush sister to Lot 4A. Her September heifer calf by Titlelist sells.

- Breeding information available sale day.

4BB J&J Queen 9074

CALVED: 9/08/2009 • COW: 16574016 • TATTOO: 9074

#BR Midland [AMF-NHF]
EXAR Titlelist T011 [AMF-NHF]
EXG Blackcap R054 R3

#Twin Valley Precision E161 [NHC-AMF-RDF]
BR Royal Lass 7036-19
EXAR Sudden Impact 1537 [AMF-NHF]
EXG Blackcap N145 R3

#N Bar Emulation EXT [AMF-NHF]
+J&J Queen 799
+J&J Queenie 9206

#Emulation N Bar 5522
N Bar Primrose 2424
##A&B Yukon 7150 [AMF-NHF]
C&C Queen 418

BW EPD	WW EPD	YW EPD	MILK EPD	MRB EPD	RE EPD	\$W	\$F	\$G	\$B
I+1.2	I+47	I+17	I+.52	I-.01					

Fancy look in this Titlelist daughter from the J&J Queen family.

- BW 60 lbs. Adj. WW 643 lbs.
- Sells open.



MCS

Lot 5 SydGen Mabel 5003

"What do . . . model type Angus females look like? Check out 5003."



MCS

Lot 5A J&J Mabel 834

5 SydGen Mabel 5003

CALVED: 1/01/2005 • COW: 14980052 • TATTOO: 5003

#Millcreek Diversity [AMF-NHF] #+GAR Sleep Easy 1009 [AMF-NHF]
#SAF Directive [AMF-NHF] Millcreek Travel Lass
+SAF Royal Queen 5084 #Bon View Bando 598 [AMF]
 SAF Royal Queen 9022

+Shady Brook Encore 36H #RR Scotchcap 9440 [AMF-NHF]
#Mabel of Rollin Rock 0665 Sitz Everelda Entense 1137
Mabel of Rollin Rock 6429 #Lukens 711 Buster 3163
 Mabel of Rollin Rock 8249

BW EPD	WW EPD	YW EPD	MILK EPD	MRB EPD	RE EPD	SW	SF	SG	S8
+1.6	+53	+91	+29	+12	-.05	+31.08	+29.00	+3.26	+31.17

What do productive, reproductively efficient, sound, heavy milking, model type Angus females look like? Check out 5003. Her tremendous look and eye appeal are backed by a solid foundation cow family from Rollin Rock loaded with curve-bending genetics. Two natural calves from 5003 have ratioed 109 at weaning, 107 as yearlings and 101 for REA. 5003 has the look, power and calm disposition to make exceptional show cattle. Her daughter selling as Lot 5A is the best two-year-old spring pair in the sale.

- Flushed four times, producing 12 high quality embryos (with a great conception rate—the first nine implanted resulted in seven pregnancies).
- Breeding information available sale day.

5A J&J Mabel 834 [NHF]

CALVED: 2/07/08 • COW: 16233643 • TATTOO: 834

#+EXAR New Look 2971 [AMF-NHF] #Bon View New Design 1407 [AMF-NHF]
+J&J Double Take 550 [AMF-NHF] N Bar Primrose 2424
+PF E161 Bardolena 3153 [NHF] #Twin Valley Precision E161 [NHC-AMF-RDF]
 GK Betsy Bardolena 323A

#SAF Directive [AMF-NHF] #Millcreek Diversity [AMF-NHF]
SydGen Mabel 5003 +SAF Royal Queen 5084
#Mabel of Rollin Rock 0665 +Shady Brook Encore 36H
 Mabel of Rollin Rock 6429

BW EPD	WW EPD	YW EPD	MILK EPD	MRB EPD	RE EPD	SW	SF	SG	S8
+0.2	+56	+97	+24	+31	+1.8	+31.81	+33.85	+16.40	+46.42

A typical Double Take daughter here—big ribbed, sound, good udder quality. 834 has a genuine halter prospect at side sired by GCC Osage. A donor quality female with an eye-catching heifer calf at side!

Lot 5AA Heifer calf born 3/17/2010, tattoo 029, by GCC Osage 601S. BW 83 lbs.

Bardolena Family



Lot 6 J&J Bardolena 530

A member of the most valuable flush ever produced at J&J! The four embryo sibs to 530 featured in our first sale, in 2006, sold at an average price of \$14,062. 530's sibs include J&J Double Take 550, the 2006 sale topper who has gone on to be a curve-bending herd sire for both A-Cross and J&J and is the sire of several feature cows in this sale offering; and J&J Bardolena 543, the high selling female in our 2006 sale to the partnership of R3 Ranch and 74-51.

As her seven offspring being offered suggest, 530 has done a tremendous job in production. She balances progeny ratios of 99 for BW, 104 for WW and 103 for YW on two natural calves, while 11 yearlings have averaged 102 for IMF and 104 for REA when evaluated by ultrasound. Her dam, PF E161 Bardolena 3153, was the high selling cow in our 2007 sale.

J&J Double Take 550 Flush brother to Lot 6
The top selling lot in our 2006 sale and now a prominent herd sire for J&J and A-Cross Ranch; his daughters sell.

6 J&J Bardolena 530 [NHF]

CALVED: 2/20/2005 • COW: +15132201 • TATTOO: 530

#Bon View New Design 1407 [AMF-NHF]	#B/R New Design 036 [AMF-NHF]
#EXAR New Look 2971 [AMF-NHF]	Bon View Pride 664
N Bar Primrose 2424	#Emulation 31 [DWF-RDF]
	Primrose N Bar 9962
#Twin Valley Precision E161 [NHC-AMF-RDF]	#GAR Precision 1680 [AMC-NHC]
+PF E161 Bardolena 3153 [NHF]	+WCC Blackcap C9 [RDC]
GK Betsy Bardolena 323A	Bardolene of Peak Dot 204R
	SPA Primeline Princess C401

BW EPD	WW EPD	YW EPD	MILK EPD	MRB EPD	RE EPD	\$W	\$F	\$G	\$B
+1.9	+49	+91	+21	+39	+53	+26.03	+30.54	+26.52	+51.44

- Tremendous look of function offered with attractive numerical balance across the board, ranking in the breed's top 2% of current dams for RE EPD and the top 10% for WW, YW, \$F and \$B. A full sister sells as Lot 7.
- Flushed five times, producing 36 high quality embryos.
- Breeding information available sale day.

6A J&J Bardolena 9087

CALVED: 9/27/2009 • COW: 16575306 • TATTOO: 9087

BC Marathon 7022 [AMF-NHF]	OCC Kirby 633K
BC 7022 Raven 7965 [AMF-NHF]	Gibbet Hill Mignonne E37
OCC Blackbird 796F	#OCC Bonanza 880B
	OCC Blackbird 779A
#EXAR New Look 2971 [AMF-NHF]	#Bon View New Design 1407 [AMF-NHF]
+J&J Bardolena 530 [NHF]	N Bar Primrose 2424
+PF E161 Bardolena 3153 [NHF]	#Twin Valley Precision E161 [NHC-AMF-RDF]
	GK Betsy Bardolena 323A

BW EPD	WW EPD	YW EPD	MILK EPD	MRB EPD	RE EPD	\$W	\$F	\$G	\$B
+3.1	+50	+85	+19	+35	+53	+25.56	+24.24	+27.03	+50.62

- This big ribbed, natural calf out of 530 balanced a 78-lb. birth weight with an adj. 205 of 709 to ratio 105 at weaning. Full sisters sell as Lots 6B and 6C.
- Sells open.

The 10 females selling from the Bardolena family represent a genuine herd-building opportunity!

Bardolena Family



PF E161 Bardolena 3153
 Dam of Lots 6 and 7;
 maternal grandam of Lots 6A-6J
 and Lot 7A



MCS

Lot 6D
 J&J Bardolena 9039

Lots 6B and 6C are yearling full sisters to Lot 6A. They came out of a raised calf program where they didn't receive creep. These two Raven daughters out of 530 are a little thinner than some of the other yearlings but are in excellent shape to go on to make productive cows.

6B J&J Bardolena 9146

CALVED: 3/28/2009 • COW: +16575308 • TATTOO: 9146

BW EPD	WW EPD	YW EPD	MILK EPD	MRB EPD	RE EPD	SW	Sf	SG	\$B
+2.8	+48	+85	+19	+38	+47	+24.79	+25.00	+26.73	+51.88

Reports on the first Raven daughters in production are great! They rate high on udder structure, teat refinement and maternal potential.

- BW 75 lbs. Adj. WW 550 lbs. Adj. IMF 4.62%. Adj. REA 9.8 sq. in.
- Breeding information available sale day.

6C J&J Bardolena 9149

CALVED: 3/28/2009 • COW: +16575309 • TATTOO: 9149

BW EPD	WW EPD	YW EPD	MILK EPD	MRB EPD	RE EPD	SW	Sf	SG	\$B
+2.8	+48	+85	+19	+43	+74	+24.79	+25.00	+31.22	+56.37

9149 was unmatched in her contemporary group when evaluated by ultrasound last month as a yearling. She posted an IMF ratio of 117 combined with a REA ratio of 128 to rank in the upper 1% of the breed for RE EPD and the upper 10% for \$B Value.

- BW 75 lbs. Adj. WW 530 lbs. Adj. IMF 5.34%. Adj. REA 12.9 sq. in.
- Breeding information available sale day.

6D J&J Bardolena 9039

CALVED: 2/25/2009 • COW: +16574022 • TATTOO: 9039

#BR Midland [AMF-NHF]	#Twin Valley Precision E161 [NHC-AMF-RDF]
EXAR Titlelist T011 [AMF-NHF]	BR Royal Lass 7036-19
EXG Blackcap R054 R3	EXAR Sudden Impact 1537 [AMF-NHF]
	EXG Blackcap N145 R3
#+EXAR New Look 2971 [AMF-NHF]	#Bon View New Design 1407 [AMF-NHF]
+J&J Bardolena 530 [NHF]	N Bar Primrose 2424
+PF E161 Bardolena 3153 [NHF]	#Twin Valley Precision E161 [NHC-AMF-RDF]
	GK Betsy Bardolena 323A

BW EPD	WW EPD	YW EPD	MILK EPD	MRB EPD	RE EPD	SW	Sf	SG	\$B
+1.7	+49	+91	+21	+61	+35	+26.43	+30.54	+33.39	+52.15

A favorite since birth, 9039 has a flawless structural base and is big ribbed, long and thick. She posted ratios of 107 for both IMF and REA as a yearling.

- BW 73 lbs. Adj. WW 729 lbs. Adj. IMF 5.00%. Adj. REA 13.0 sq. in.
- Breeding information available sale day.

6E J&J Bardolena 9026

CALVED: 2/17/2009 • COW: +16574021 • TATTOO: 9026

BW EPD	WW EPD	YW EPD	MILK EPD	MRB EPD	RE EPD	SW	Sf	SG	\$B
+1.7	+49	+91	+21	+55	+36	+26.43	+30.54	+32.43	+51.19

This thick topped, attractive profiling flush sister to Lot 6D ratioed 107 for REA.

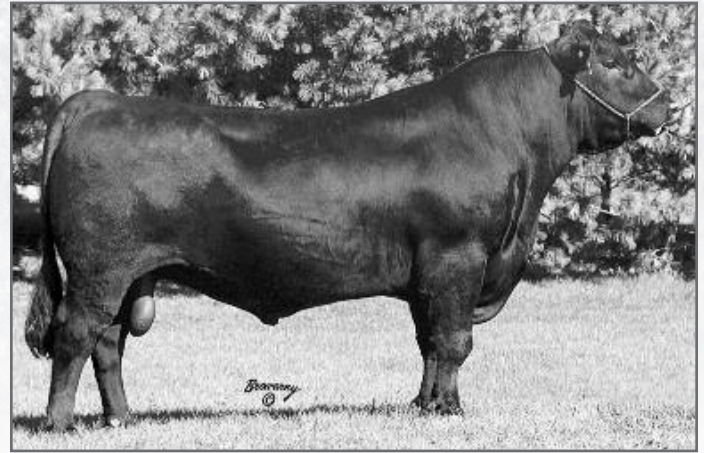
- BW 73 lbs. Adj. WW 683 lbs. Adj. IMF 4.35%. Adj. REA 11.1 sq. in.
- Breeding information available sale day.

more Bardolena Family

The flush sisters selling as Lots 6F and 6G, sired by the renowned female sire Bextor and out of Bardolena 530, are still a little green but are backed by a great cow family. These fall heifer calves have the structure, shape and depth to develop into productive, functional females.

Pedigree for Lots 6F-6G:

#BAR EXT Traveler 205 [AMF-NHF]	#N Bar Emulation EXT [AMF-NHF]
#CRA Bextor 872 5205 608 [AMF-NHF]	#BAR Queen Traveler 3015
CRA Lady Jaye 608 498 S Easy	#+GAR Sleep Easy 1009 [AMF-NHF]
	HHF 917 Lady 975 498
#+EXAR New Look 2971 [AMF-NHF]	#Bon View New Design 1407 [AMF-NHF]
+J&J Bardolena 530 [NHF]	N Bar Primrose 2424
+PF E161 Bardolena 3153 [NHF]	#Twin Valley Precision E161 [NHC-AMF-RDF]
	GK Betsy Bardolena 323A



CRA Bextor 872 5205 608 Sire of Lots 6F-6G

BW EPD	WW EPD	YW EPD	MILK EPD	MRB EPD	RE EPD	SW	Sf	SG	Sb
+1.8	+1.50	+1.94	+1.27	+1.49	+1.51	+27.14	+33.17	+30.89	+53.61

6F

J&J Bardolena 9070

CALVED: 9/04/2009 • COW: +16575176 • TATTOO: 9070

- BW 71 lbs. Adj. WW 629 lbs.
- Sells open.

6G

J&J Bardolena 9092

CALVED: 10/11/2009 • COW: +16575178 • TATTOO: 9092

- BW 76 lbs. Adj. WW 607 lbs.
- Sells open.



Lot 6G J&J Bardolena 9092

7

J&J Bardolena 7122 [NHF]

CALVED: 4/28/2007 • COW: +15969026 • TATTOO: 7122

#Bon View New Design 1407 [AMF-NHF]	#B/R New Design 036 [AMF-NHF]
#+EXAR New Look 2971 [AMF-NHF]	Bon View Pride 664
N Bar Primrose 2424	#Emulation 31 [DWF-RDF]
	Primrose N Bar 9962
#Twin Valley Precision E161 [NHC-AMF-RDF]	#GAR Precision 1680 [AMC-NHC]
+PF E161 Bardolena 3153 [NHF]	+WCC Blackcap C9 [RDC]
GK Betsy Bardolena 323A	Bardolene of Peak Dot 204R
	SPA Primeline Princess C401

BW EPD	WW EPD	YW EPD	MILK EPD	MRB EPD	RE EPD	SW	Sf	SG	Sb
+2.2	+1.48	+1.90	+1.20	+0.39	+0.36	+24.77	+29.93	+26.95	+51.70

A younger embryo sib to the Lot 6 donor, Bardolena 530, 7122 did a good job with her first natural calf last year—the yearling heifer selling as Lot 7A. We had the misfortune of losing 7122's spring 2010 natural calf.

- Breeding information available sale day.

7A

J&J Bardolena 9051 [AMF]

CALVED: 3/17/2009 • COW: 16574677 • TATTOO: 9051

#CA Future Direction 5321 [AMC-NHC]	#GAR Precision 1680 [AMC-NHC]
+J&J Future Direction 7118 [AMC-NHF]	CA Miss Power Fix 308 [AMF]
+J&J Queenie 9206	#+A&B Yukon 7150 [AMF-NHF]
	C&C Queen 418
#+EXAR New Look 2971 [AMF-NHF]	#Bon View New Design 1407 [AMF-NHF]
+J&J Bardolena 7122 [NHF]	N Bar Primrose 2424
+PF E161 Bardolena 3153 [NHF]	#Twin Valley Precision E161 [NHC-AMF-RDF]
	GK Betsy Bardolena 323A

BW EPD	WW EPD	YW EPD	MILK EPD	MRB EPD	RE EPD	SW	Sf	SG	Sb
+2.4	+1.47	+1.20	+1.45	+1.23					

The pedigree of this neat made yearling shows both of the top two cow families at J&J—Queenie and Bardolena—in addition to N Bar Primrose 2424. A future factory here!

- BW 77 lbs. Adj. WW 689 lbs. Adj. IMF 4.38%. Adj. REA 13.2 sq. in.
- Sells open.



Real-time bidding will be available via the internet for the J&J Friday Night Embryo Auction and the Dispersal on Saturday. Live audio and live video will allow buyers to bid on animals just as if they were present at the auction. Buyers must create an account prior to the sale. Please visit www.LiveAuctions.tv to create an account. Follow the instructions there to create your account, or contact Brad Fahrmeier at (816) 392-9241, or e-mail brad@LiveAuctions.tv



MCS

RR Dixie Erica 4071 Dam of Lots 8A-8G

RR Dixie Erica 4071 is the dam of the seven head selling as the Lot 8s. 4071 sold to Chris Cox as the Lot 7 feature last year for \$7,600. She is the cow that compelled me to comment several times, "If I were to own 1500 cows, I would want them all to be like her."

4071 had individual performance ratios of 98 for birth, 105 at weaning and 109 for yearling weight. Her natural calves posted average ratios of 113 at weaning, 109 for both yearling weight and IMF and 108 for REA. Wow!

4071 has a unique maternal pedigree. Four daughters and three sons sell, including her January ET calves by Currency. The first Currency calves are getting great reviews.

8A

J&J Dixie Erica 832 [NHF]

CALVED: 2/07/2008 • COW: 16233642 • TATTOO: 832

#CA Future Direction 5321 [AMC-NHC]
Basin Franchise P142 [NHC-AMF]
Basin Chloe 812L [AMF-NHF]

#GAR Precision 1680 [AMC-NHC]
CA Miss Power Fix 308 [AMF]
#Gardens Expedition [AMF-NHF]
Basin Chloe 6198

##HA Image Maker 0415 [AMF-NHF]
RR Dixie Erica 4071
RR Dixie Erica 2917

#Hero 6267 of RR 2418
HA Rito Blackcap 9038
+Lukens Forever Future 7000
RR Dixie Erica 5674

BW EPD	WW EPD	YW EPD	MILK EPD	MRB EPD	RE EPD	\$W	\$F	\$G	\$B
+0.9	+52	+97	+31	+29	+46	+29.29	+35.43	+25.63	+52.90

This daughter of 4071 lost her spring 2010 heifer calf in a snow storm. She has great numbers, ranking in the top 3% of Angus dams for YW, Milk and RE, the top 4% for \$F and \$B, top 5% for WW, top 10% for \$W and top 20% for BW.

• Breeding information available sale day.

Pedigree for Lots 8B-8C-8D-8E-8F-8G:

Stevenson Moneymaker R185 [AMF-NHF]	Boyd On Target 1083 [AMF-NHF]
+OSU Currency 8173 [AMF-NHF]	#Stevenson Clova Pride L888 [AMF-NHF]
+OSU Empress 4123	##Northern Improvement 4480 GF [AMF-NHF]
	+OSU 2928 Empress 4177
##HA Image Maker 0415 [AMF-NHF]	#Hero 6267 of RR 2418
RR Dixie Erica 4071	HA Rito Blackcap 9038
RR Dixie Erica 2917	+Lukens Forever Future 7000
	RR Dixie Erica 5674

	BW EPD	WW EPD	YW EPD	MILK EPD	MRB EPD	RE EPD	\$W	\$F	\$G	\$B
S:	+2.7	+53	+98	+21	+20	+05	+24.99	+36.05	+17.12	+41.26
D:	+1.7	+56	+97	+34	+09	+09	+33.07	+33.85	+17.00	+36.67

8B

J&J Dixie Erica 002

CALVED: 1/20/2010 • COW: Reg. Pending • TATTOO: 002

- BW 70 lbs.
- Sells open.

8E

J&J Currency 008

CALVED: 1/22/2010 • BULL: Reg. Pending • TATTOO: 008

- BW 82 lbs.

8C

J&J Dixie Erica 006

CALVED: 1/21/2010 • COW: Reg. Pending • TATTOO: 006

- BW 70 lbs.
- Sells open.

8F

J&J Currency 012

CALVED: 1/26/2010 • BULL: Reg. Pending • TATTOO: 012

- BW 77 lbs.

8D

J&J Dixie Erica 010

CALVED: 1/23/2010 • COW: Reg. Pending • TATTOO: 010

- BW 70 lbs.
- Sells open.

8G

J&J Currency 014

CALVED: 1/28/2010 • BULL: Reg. Pending • TATTOO: 014

- BW 78 lbs.

Dixie Erica Family



J&J Dixie Erica 520 \$10,000 daughter of Lot 9

Lot 9 J&J 6807 Dixie 012

For those who have followed our program, you will remember past sale catalogues in which I have written about my great appreciation for the highly productive, fertile, sound, low maintenance cows from the Rollin Rock herd in Montana and what a significant factor they have been in our program. The cows featured in Lots 5, 8 and 9 all descend from Rollin Rock genetics.



The Friday Night Embryo Auction will include a package of embryos from 012 sired by OSU Currency.



Dixie Erica of RR 7530 "Bob" A foundation J&J donor and the dam of Lot 9

9 J&J 6807 Dixie 012

CALVED: 3/13/2000 • COW: +13730176 • TATTOO: 012

#QAS Traveler 23-4 [AMF-NHF]
#DHD Traveler 6807 [AMF-NHF]
#Bemindful Maid DHD 0807

#E&B 1483 Scotchman 5041
Dixie Erica of RR 7530
#Dixie Erica of RR 3506

#Band 234 of Ideal 3163
QAS Blackbird Eve 601 1
#PBC 707 1M F0203
Bemindful Maid of RR 1079

#RR 9440 Scotch Cap 1483 [AMF-NHF]
Lady 183 Traveler 334
Corral Creek Strath C061
#Dixie Erica of RR 8258

BW EPD	WW EPD	YW EPD	MILK EPD	MRB EPD	RE EPD	SW	SF	SG	S8
+2.2	+35	+73	+15	+0.00	+0.07	+19.44	+18.32	+10.62	+32.52

The 012 cow was produced by the famous "Bob" 7530, who served as one of our foundation donors. 012 herself has produced a son that topped the OBI gain test and sale in 2006 as well as Dixie Erica 520 (pictured above), who sold for \$10,000 to EXAR in our 2007 sale. At the current age of 10, this cow is still sound, athletic and easily mistaken for a much younger cow. Simply put, this female has made an outstanding contribution at J&J. Three daughters also sell.

- Since June 2007, flushed five times, producing 20 high quality embryos.
- Selling 50% interest, no possession. Buyer will become the partner of A-Cross Ranch.

9A J&J AC Dixie Erica 9088

CALVED: 9/30/2009 • COW: 16580853 • TATTOO: 9088

EXAR Lutton 1831 [AMF-NHF]
+EXAR Spartan 6225 [AMF-NHF]
WK Winnie 7305

#DHD Traveler 6807 [AMF-NHF]
+J&J 6807 Dixie 012
Dixie Erica of RR 7530

#Northern Improvement 4480 GF [AMF-NHF]
EXAR Saras Dream 9809
#+Krugerrands Moneyline
WK Winnie 5460

#QAS Traveler 23-4 [AMF-NHF]
#Bemindful Maid DHD 0807
#E&B 1483 Scotchman 5041
#Dixie Erica of RR 3506

BW EPD	WW EPD	YW EPD	MILK EPD	MRB EPD	RE EPD	SW	SF	SG	S8
+3.0	+44	+84	+17	+1.13	+0.08	+21.25	+25.54	+17.73	+42.18

If our schedule and the weather had cooperated, this heifer would have been pictured. She has a great deal of show and cow potential. Exceptional look and pattern and backed by a truly great cow family! Offered jointly by J&J and A-Cross Ranch.

- BW 78 lbs. Adj. WW 633 lbs.
- Sells open.

9B

J&J Dixie Erica 677

CALVED: 10/08/2006 • COW: +15632794 • TATTOO: 677

Schurrtop MC
Schurrtop MC 2500 [AMF]
Schurrtop RS 1413 2153

#Papa Equator 2928 [AMF-NHF]
Schurrtop 1483 9024
Brooks Schurr Trend
Ryans Schurrtop 2125

#DHD Traveler 6807 [AMF-NHF]
+J&J 6807 Dixie 012
Dixie Erica of RR 7530

#QAS Traveler 23-4 [AMF-NHF]
#Bemindful Maid DHD 0807
#E&B 1483 Scotchman 5041
#Dixie Erica of RR 3506

BW EPD	WW EPD	YW EPD	MILK EPD	MRE EPD	RE EPD	SW	SF	SG	S8
I+3.8	I+42	I+80	I+23	I-.04	I+.07	+20.55	+22.41	+11.16	+30.66

The MC 2500 females are getting great reviews in production. A 2500 daughter recently was the high selling cow at the 2010 Cowboy Classic.

• Breeding information available sale day.



Schurrtop MC 2500
Sire of Lots 9B-9C

9C

J&J Dixie Erica 7121

CALVED: 4/26/2007 • COW: +15970872 • TATTOO: 7121

Schurrtop MC
Schurrtop MC 2500 [AMF]
Schurrtop RS 1413 2153

#Papa Equator 2928 [AMF-NHF]
Schurrtop 1483 9024
Brooks Schurr Trend
Ryans Schurrtop 2125

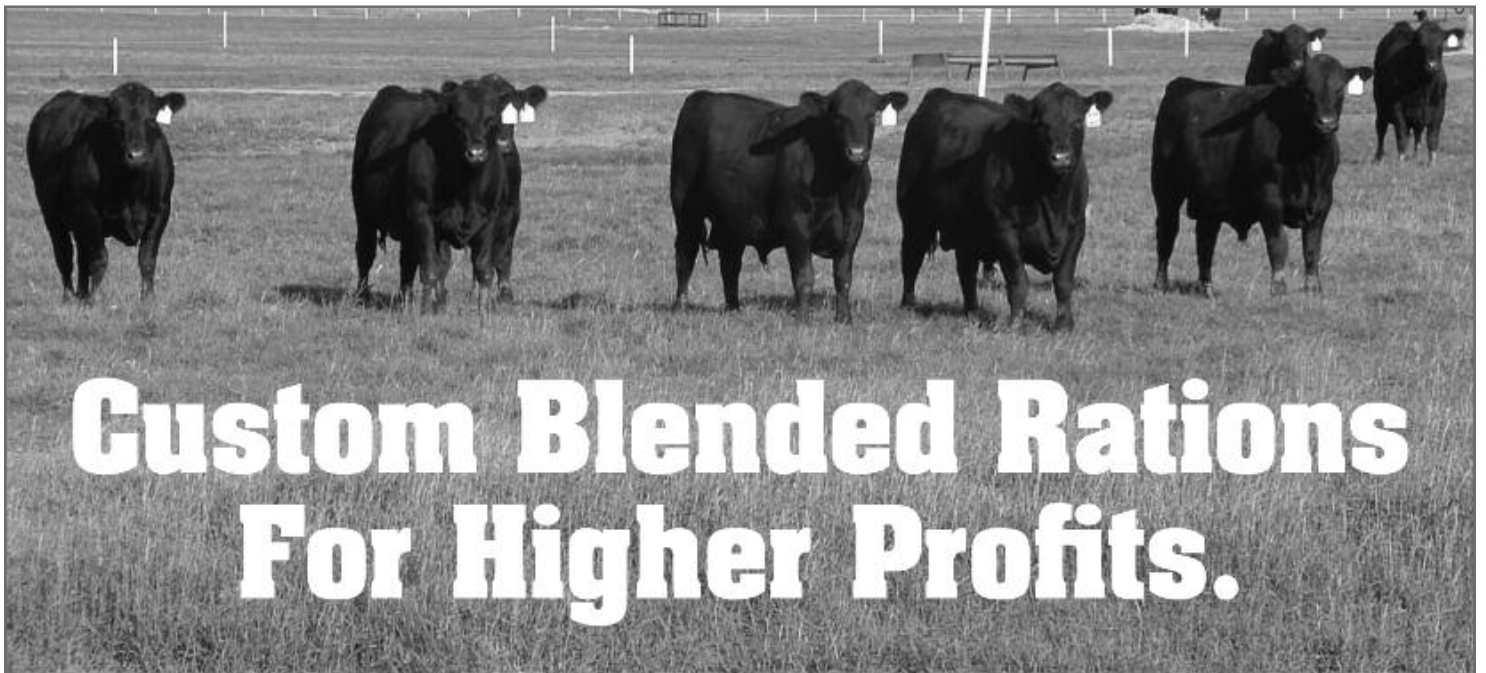
#DHD Traveler 6807 [AMF-NHF]
+J&J 6807 Dixie 012
Dixie Erica of RR 7530

#QAS Traveler 23-4 [AMF-NHF]
#Bemindful Maid DHD 0807
#E&B 1483 Scotchman 5041
#Dixie Erica of RR 3506

BW EPD	WW EPD	YW EPD	MILK EPD	MRE EPD	RE EPD	SW	SF	SG	S8
I+3.8	I+42	I+80	I+23	-.03	+.04	+20.55	+22.41	+11.77	+30.57

This full sister to Lot 9B is nursing a very nice Currency heifer calf. Note that this three year old has only one functional quarter. This is a nice pair of females.

Lot 9CC Heifer calf born 3/06/2010, tattoo 026, by OSU Currency 8173. BW 87 lbs.



**LIVESTOCK
NUTRITION
CENTER**
BETTER FEED, BETTER RESULTS

ALTUS
(580) 482-2700

CHICKASHA
(405) 224-9696

FOREMAN
(870) 542-5250

GUTHRIE
(405) 260-1841

KEOTA
(918) 966-3242



MCS

Lot 10 J&J OT26 Rita 48T

Selling the remaining half interest in the top selling lot from our 2009 sale plus her progeny!

10

J&J OT26 Rita 48T [AMF-NHF]

CALVED: 2/20/2007 • COW: +15752780 • TATTOO: 48T

#SS Traveler 6807 T510 [AMF-NHF]
#SS Objective T510 OT26 [AMF-NHF]
SS Miss Rita R011 7R8 [AMF-NHF]

#DHD Traveler 6807 [AMF-NHF]
#SS Miss Hi Spade A114
SS Rito Rito R76 R011
SS Miss Ultress U56

#Bon View New Design 1407 [AMF-NHF]
+GAR 1407 New Design 353 [AMC-NHF]
+GAR Precision 949

#B/R New Design 036 [AMF-NHF]
Bon View Pride 664
#GAR Precision 1680 [AMC-NHC]
+GAR EXT 704 [AMF]

BW EPD	WW EPD	YW EPD	MILK EPD	MRB EPD	RE EPD	\$W	\$F	\$G	\$B
+1.3	+57	+106	+27	+.68	+.34	+29.09	+42.75	+40.00	+58.60

- Selling 50% interest, no possession. Buyer will become the partner of A-Cross Ranch.

Only in a dispersal would you have the opportunity to purchase a 50% embryo interest in the high selling Lot 1 females from the 2009 sales at both J&J and Pollard Farms, represented by Lots 10 and 11!

This stylish, powerful female is right for the times and poised for the future. 48T uniquely combines pedigree, individual performance and visual quality. She descends from breed icon females Scotch Cap 309 and Rita 5H11. Her long list of high income producing female ancestors include her dam, GAR 1407 New Design 353, the high selling female of the record setting 2007 Eagle dispersion who herself is a full sister-in-blood to GAR New Design 982, who sold for \$100,000 as a featured donor in the 2006 record-setting sale at EXAR.

48T is a wide based, deep ribbed three year old who combines udder quality with an extremely correct structural base. Ranking well into the upper percentiles of current dams for \$B index, this female scanned with over 7% IMF with only .22 inch rib fat as a yearling and posted a REA ratio of 101. To further prove her genetic value, her first natural calf—who sells as Lot 10A—balanced a 78 lb. birth weight with a ratio of 125 at both weaning and yearling as well as a 102 ratio for IMF and 107 for REA.

Both 48T and her daughter selling as Lot 10A could be termed truly dynamic breeding pieces, combining the look of power and function with the additive genetic merit for curve-bending calving ease, growth and carcass genetics ranking in the breed's highest percentiles.

The Friday Night Embryo Auction will include a package of six embryos from 48T sired by Bismarck.



GAR Predestined Sire of Lot 10B and the Lot 10C pregnancy out of 48T

10A J&J 7118 Rita 9050 [AMF-NHF]

CALVED: 3/15/2009 • COW: 16335967 • TATTOO: 9050

#CA Future Direction 5321 [AMC-NHC]
+J&J Future Direction 7118 [AMC-NHF]
+J&J Queenie 9206

#GAR Precision 1680 [AMC-NHC]
CA Miss Power Fix 308 [AMF]
#+A&B Yukon 7150 [AMF-NHF]
C&C Queen 418

#SS Objective T510 0T26 [AMF-NHF]
+J&J OT26 Rita 48T [AMF-NHF]
+GAR 1407 New Design 353 [AMC-NHF]

#SS Traveler 6807 T510 [AMF-NHF]
SS Miss Rita R011 7R8 [AMF-NHF]
#Bon View New Design 1407 [AMF-NHF]
+GAR Precision 949

BW EPD	WW EPD	YW EPD	MILK EPD	MRB EPD	RE EPD	\$W	\$F	\$G	\$B
+2.1	+65	+111	+23	+59	+27	+30.77	+44.76	+33.86	+62.75

9050 is the first natural-born daughter of Rita 48T. She compiles a tremendously impressive set of numbers to rank in the breed's best 1% for WW and YW, 2% for \$F, 3% for \$B, 10% for \$W and 15% for Marbling while maintaining a breed average BW EPD. She posted weaning and yearling weight ratios of 125 with ultrasound ratios of 102 for %IMF and 107 for REA.

- BW 78 lbs. Adj. WW 871 lbs. Adj. YW 1063 lbs. Adj. IMF 4.73%. Adj. REA 11.4 sq. in.
- Offered jointly by J&J and A-Cross Ranch.
- Breeding information available sale day.

10B J&J Predestined 020

CALVED: 2/10/2010 • BULL: Reg. Pending • TATTOO: 020

#B/R New Design 036 [AMF-NHF]
#GAR Predestined [AMF-NHF]
#+GAR EXT 4206

#VDAR New Trend 315 [AMF-NHF]
B/R Blackcap Empress 76
#N Bar Emulation EXT [AMF-NHF]
+GAR 6807 Traveler 1432

#SS Objective T510 0T26 [AMF-NHF]
+J&J OT26 Rita 48T [AMF-NHF]
+GAR 1407 New Design 353 [AMC-NHF]

#SS Traveler 6807 T510 [AMF-NHF]
SS Miss Rita R011 7R8 [AMF-NHF]
#Bon View New Design 1407 [AMF-NHF]
+GAR Precision 949

BW EPD	WW EPD	YW EPD	MILK EPD	MRB EPD	RE EPD	\$W	\$F	\$G	\$B
+4.1	+53	+99	+28	+1.12	+.57	+37.39	+37.08	+38.59	+69.86
+1.3	+57	+106	+27	+.68	+.34	+29.09	+42.75	+40.00	+58.60

Spring ET bull calf. Also selling a pregnancy from this mating.

- BW 80 lbs.
- Offered jointly by J&J and A-Cross Ranch.

10C Predestined × 48T

Heifer Calf Pregnancy

- Selling a guaranteed heifer calf pregnancy from the Predestined x 48T mating, due spring 2011.
- Offered jointly by J&J and A-Cross Ranch.

A note about the 2010 J&J spring-born ET calves:

The spring-born ET calves that are selling will be weaned by July 31, 2010 and can be picked up at J&J any time between August 1 and August 31, 2010. Calves not picked up by August 31 will be subject to a \$2 per day boarding fee. If any spring 2010 ET calf dies prior to August 1, purchase price will be refunded.



Lot 11 VAR Rita 6100



GAR EXT 614 \$400,000 maternal grandam of Lot 11

11

VAR Rita 6100 [AMF-NHF]

CALVED: 2/10/2006 • COW: +15298961 • TATTOO: 6100

#Twin Valley Precision E161 [NHC-AMF-RDF]
#BR Midland [AMF-NHF]
BR Royal Lass 7036-19

#GAR Precision 1680 [AMC-NHC]
+WCC Blackcap C9 [RDC]
#+SAF Neutron [AMF-NHF]
#SAF Royal Lass 7036

#B/R New Design 036 [AMF-NHF]
+GAR New Design 1440 [AMF]
+GAR EXT 614 [AMF]

#VDAR New Trend 315 [AMF-NHF]
B/R Blackcap Empress 76
#N Bar Emulation EXT [AMF-NHF]
+GAR Scotch Cap 309

BW EPD	WW EPD	YW EPD	MILK EPD	MRB EPD	RE EPD	SW	Sf	\$G	\$B
+2.7	+44	+79	+15	+.52	+1.15	+21.88	+20.70	+30.73	+47.42

- Selling a 50% embryo interest (no possession) in the high selling and Lot 1 cow from the 2009 sale at Pollard Farms. Buyer will become the partner of A-Cross Ranch.

VAR Rita 6100 is a direct daughter of GAR New Design 1440, who set a \$400,000 breed record when selected by Prospect Hill and Three Trees to top the 2005 sale at Vintage Angus Ranch. A maternal sister to 6100 sold half interest for \$52,500 to C&H in the 2006 Vintage sale, where two daughters sold for \$61,000. Another maternal sister was the \$120,000 top-selling cow of the 2006 GAR sale with another sister selling for \$90,000 there in 2007.

The grandam of 6100, GAR EXT 614, is the \$400,000 cornerstone of URE excellence who anchors the Rita Family in the Deer Valley program and is without question one of the breed's all-time great producing females. With well over \$4 million in progeny sales, GAR EXT 614 has become one of the top five females in breed history in total sales income. In addition to the dam of 6100, a few of her famous daughters include the world record full interest heifer from Deer Valley's inaugural Focused on the Future Sale at \$610,000, Deer Valley Rita 7105; the \$470,000 GAR Precision 939; the \$135,000 GAR Precision 810; the \$150,000 GAR Precision 2168; the \$100,000 KMK Rita J352; GAR New Design 1300, GAR Precision 1639, GAR Precision 1660, GAR Precision 1709, GAR Precision 2208, Boyd 614 Rita 3014, SandPoint Rita 3020 LS and Riverbend Rita 3017, to name a few. In addition, three pregnancies sold in the inaugural Focused on the Future Sale, including the world record selling pregnancy at \$200,000 to Limestone, LLC as well as a \$180,000 pregnancy to Riverbend Ranch and a \$125,000 pregnancy to SandPoint Cattle Co.

6100 ranks in the top 10% of Angus dams for Marbling and \$G and the top 15% for \$B.



The Friday Night Embryo Auction will include Rita 6100's embryos by Bismarck and Rito 6EM3.

Blackcap Family



MCS

Lot 12A J&J Blackcap 9082

Pedigree for Lots 12A-12B-12C-12D-12E:

#B/R New Design 036 [AMF-NHF]	#VDAR New Trend 315 [AMF-NHF]
#GAR Predestined [AMF-NHF]	B/R Blackcap Empress 76
#+GAR EXT 4206	#N Bar Emulation EXT [AMF-NHF]
	+GAR 6807 Traveler 1432
#Bon View New Design 1407 [AMF-NHF]	#B/R New Design 036 [AMF-NHF]
+Three Trees Blackcap 3279	Bon View Pride 664
+Davis Blackcap 0100 [AMF]	#Rito 616 of 4B20 6807 [AMF-NHF]
	GAR Precision 2536 [AMC-NHF]

12A J&J Blackcap 9082

CALVED: 9/12/2009 • COW: 16575351 • TATTOO: 9082

BW EPD	WW EPD	YW EPD	MILK EPD	MRB EPD	RE EPD	\$W	\$F	\$G	\$B
+2.2	+44	+88	+28	+82	+48	+29.12	+29.48	+38.83	+59.20

Outstanding cow potential in this big ribbed, powerful fall heifer calf out of 3279 and sired by Predestined. Correctly structured and sound, she ranks in the top 2% of non-parent Angus females for \$G, top 3% for Marbling and top 10% for Milk, RE and \$B.

- BW 75 lbs. Adj. WW 661 lbs.
- Sells open.

12B J&J Blackcap 9077

CALVED: 9/08/2009 • COW: +16575350 • TATTOO: 9077

BW EPD	WW EPD	YW EPD	MILK EPD	MRB EPD	RE EPD	\$W	\$F	\$G	\$B
+2.4	+46	+88	+28	+82	+48	+30.14	+28.71	+38.83	+58.99

- BW 68 lbs. Adj. WW 536 lbs.
- Sells open.

Lots 12C, D and E are yearling daughters of 3279 that scanned extremely well and are three of the highest \$Beef females in the sale. From a raised calf program where they received no creep, they are thinner than some of the other heifers but will make great cows.

12C J&J Blackcap 9128

CALVED: 3/27/2009 • COW: +16575354 • TATTOO: 9128

BW EPD	WW EPD	YW EPD	MILK EPD	MRB EPD	RE EPD	\$W	\$F	\$G	\$B
+2.4	+46	+88	+28	+82	+50	+30.14	+28.71	+38.16	+59.00

- 9128 posted yearling ultrasound ratios of 108 for IMF and 104 for REA.
- BW 75 lbs. Adj. WW 523 lbs. Adj. IMF 4.93%. Adj. REA 10.5 sq. in.
 - Sells open.

12D J&J Blackcap 9139

CALVED: 4/04/2009 • COW: +16575357 • TATTOO: 9139

BW EPD	WW EPD	YW EPD	MILK EPD	MRB EPD	RE EPD	\$W	\$F	\$G	\$B
+2.4	+46	+88	+28	+77	+63	+30.14	+28.71	+38.20	+59.96

- 9139 had a yearling REA ratio of 119.
- BW 70 lbs. Adj. WW 509 lbs. Adj. IMF 4.19%. Adj. REA 12.0 sq. in.
 - Sells open.

12E J&J Blackcap 9140

CALVED: 3/29/2009 • COW: +16575358 • TATTOO: 9140

BW EPD	WW EPD	YW EPD	MILK EPD	MRB EPD	RE EPD	\$W	\$F	\$G	\$B
+2.4	+46	+88	+28	+78	+58	+30.14	+28.71	+38.23	+62.10

- REA ratio 117.
- BW 85 lbs. Adj. WW 587 lbs. Adj. IMF 4.30%. Adj. REA 11.8 sq. in.
 - Sells open.



Chris Mitchell

Rita 1197 of 2536 Rito 616 Flush sister to the dam of Lot 12

12 Three Trees Blackcap 3279

CALVED: 2/26/2003 • COW: +14519262 • TATTOO: 3279

#B/R New Design 036 [AMF-NHF]	#VDAR New Trend 315 [AMF-NHF]
#Bon View New Design 1407 [AMF-NHF]	B/R Blackcap Empress 76
Bon View Pride 664	#+GAR Sleep Easy 1009 [AMF-NHF]
	#Bon View Pride 1551
#Rito 616 of 4B20 6807 [AMF-NHF]	#DHD Traveler 6807 [AMF-NHF]
+Davis Blackcap 0100 [AMF]	+Rita 4B20 of 0FB1 Bando
GAR Precision 2536 [AMC-NHF]	#GAR Precision 1680 [AMC-NHC]
	+GAR EXT 2104

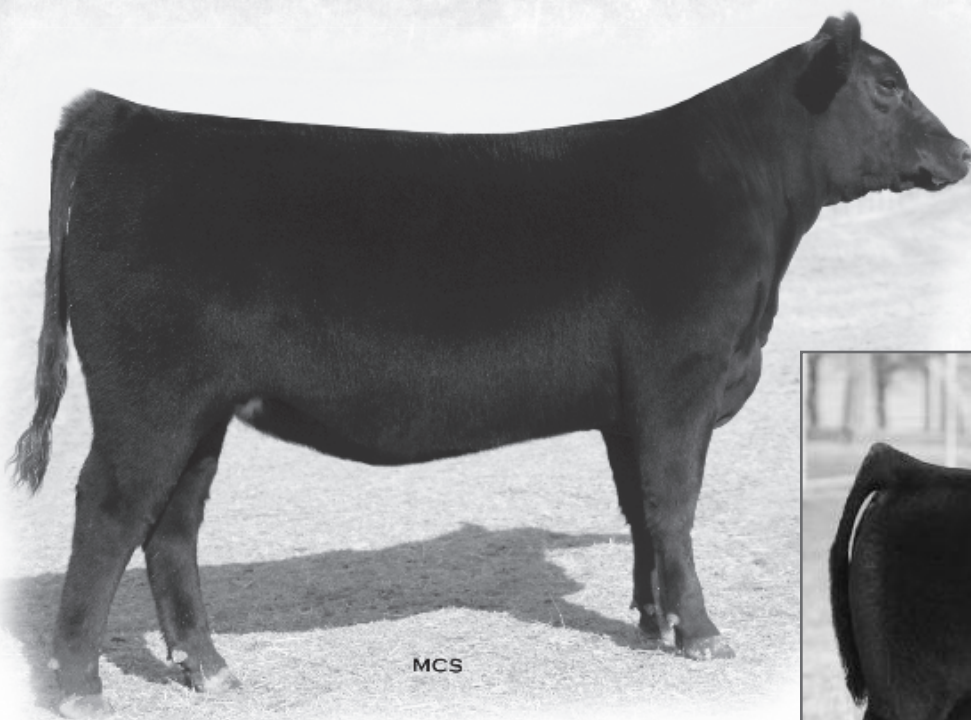
BW EPD	WW EPD	YW EPD	MILK EPD	MRB EPD	RE EPD	\$W	\$F	\$G	\$B
+0.6	+38	+76	+27	+51	+39	+27.53	+20.06	+35.03	+40.90

3279 is a productive, correctly structured maternal granddaughter of the highest income producing cow in the Angus breed. A flush sister to her dam, Rita 1197 (pictured), sold for \$400,000 for half interest in the 2008 Bases Loaded Sale in Denver.

This 1407 daughter ranks among current dams in the upper 3% for \$G, 5% for RE, 10% for Milk and Marbling and 15% for BW and \$W. Her yearling daughters, selling as Lots 12C, D and E, were among our best scanning yearling heifers.

- While at J&J, flushed four times, producing 31 embryos.
- Breeding information available sale day.

more Blackcap Family



Lot 13 J&J Blackcap 5112

(pictured as a yearling from our 2006 sale)



J&J Identity 9075 This son of Lot 13 is a flush brother to Lots 13A-13B

13

J&J Blackcap 5112

CALVED: 3/03/2005 • COW: +15132196 • TATTOO: 5112

#Twin Valley Precision E161 [NHC-AMF-RDF]
#BR Midland [AMF-NHF]
BR Royal Lass 7036-19

#GAR Precision 1680 [AMC-NHC]
+WCC Blackcap C9 [RDC]
#+SAF Neutron [AMF-NHF]
#SAF Royal Lass 7036

#Rockn D Ambush 1531 [AMF-NHF]
+J&J 1531 Blackcap 240
+Leachman Blackcap 8261

#Paramont Ambush 2172 [AMF-NHF]
Ms Blackcap Band of RD 1301
#Connealy Dateline
Leachman Blackcap 4010

BW EPD	WW EPD	YW EPD	MILK EPD	MRB EPD	RE EPD	\$W	\$F	\$G	\$B
+1.8	+45	+81	+11	+45	+30	+23.53	+22.25	+31.97	+43.48

Tremendous cow family represented by the group of cattle selling as the Lot 13s. The grandam of 5112, Leachman Blackcap 8261, is highly regarded as one of the most phenotypically impressive females in the history of EXAR and topped their 2003 "Big Event" at \$135,000. The Leachman Blackcaps have been great cows for a number of the premier Angus operations around the country . . . Three Trees, EXAR, Monarch Farms, Pollard Farms and the Leachman Family, to name a few.

5112 was the second high selling yearling heifer of the 2006 sale at J&J, selling half interest to Jeff Mafi for \$15,000 for a \$30,000 valuation. She has since generated the high selling Angus female of the 2008 J&J Holiday Wish List Sale and most recently the popular embryo sibs sired by GCC Osage.

• Selling 50% interest. Buyer will become the partner of Jeff Mafi.



Leachman Blackcap 8261 \$135,000 maternal grandam of Lot 13



MCS

Lot 13A J&J Blackcap 9103

Pedigree for Lots 13A-13B:

GCC Old School 4709	OCC Legend 616L
GCC Osage 601S	GCC Miss Improvement 26709
GCC Ms Improvement 36092	#Northern Improvement 4480 GF [AMF-NHF]
	GCC Miss Emulous Pride 6093
#BR Midland [AMF-NHF]	#Twin Valley Precision E161 [NHC-AMF-RDF]
+J&J Blackcap 5112	BR Royal Lass 7036-19
+J&J 1531 Blackcap 240	#Rockn D Ambush 1531 [AMF-NHF]
	+Leachman Blackcap 8261



Christy Collins

GCC Osage 601S Sire of Lots 13A, 13B and 13CC

BW EPD	WW EPD	YW EPD	MILK EPD	MRB EPD	RE EPD	SW	Sf	Sc	Sb
+2.2	+47	+80	+17	+30	+25	+26.28	+20.55	+27.00	+41.04

13A J&J Blackcap 9103

CALVED: 10/14/2009 • COW: +16574013 • TATTOO: 9103

Quite possibly the female with the most upside potential in this entire offering! Flawless phenotype, show and donor potential are exemplified in this flush sister to J&J Identity 9075 and J&J Standard 9102, the young herd sire prospect selling as Lot 13B. Offered jointly by J&J and Jeff Mafi.

- BW 80 lbs. Adj. WW 646 lbs.
- Sells open.

13B J&J Standard 9102

CALVED: 10/13/2009 • COW: +16574020 • TATTOO: 9102

The three brothers from the Osage x 5112 flush have generated considerable interest among cattlemen who believe in phenotype. These Osage sons combine powerful body type with seldom-found pattern and visual quality. 9102 achieved the highest adj. 205 weight of the brothers. Offered jointly by J&J and Jeff Mafi.

- BW 85 lbs. Adj. WW 864 lbs.

13C J&J Blackcap 847

CALVED: 3/01/2008 • COW: 16168381 • TATTOO: 847

Boyd On Target 1083 [AMF-NHF]	#SAF 598 Bando 5175 [AMF]
Stevenson Moneymaker R185 [AMF-NHF]	+Boyd Forever Lady 7095
#Stevenson Clova Pride L888 [AMF-NHF]	VDAR Ambush 2478
	Stevenson Clova Pride 712H
#BR Midland [AMF-NHF]	#Twin Valley Precision E161 [NHC-AMF-RDF]
+J&J Blackcap 5112	BR Royal Lass 7036-19
+J&J 1531 Blackcap 240	#Rockn D Ambush 1531 [AMF-NHF]
	+Leachman Blackcap 8261

BW EPD	WW EPD	YW EPD	MILK EPD	MRB EPD	RE EPD	SW	Sf	Sc	Sb
+3.8	+55	+99	+15	+43	+19	+21.98	+36.28	+27.75	+44.60

As further evidence of the effectiveness of mating GCC to the Leachman Blackcap line, take a look at this pretty uddered, functionally correct two-year-old Moneymaker daughter and her big hipped, stout made bull calf at side by Osage. Excellent pair of cattle!

- Breeding information available sale day.

Lot 13CC Bull calf born 1/22/2010, tattoo 009, by GCC Osage 601S. BW 90 lbs.



J&J Alternative 8907
 This son of Lot 14 was the high selling fall bull in our 2009 sale. A maternal brother sells as Lot 14A.



N Bar Emulation EXT Sire of Lot 14



OSU 6807 Jilt 5133 Dam of Lot 14

14 3F Jilt 4636of 5133 EXT

CALVED: 9/08/2004 • COW: +14899940 • TATTOO: 4636

#Emulation N Bar 5522
 #N Bar Emulation EXT [AMF-NHF]
 N Bar Primrose 2424

#DHD Traveler 6807 [AMF-NHF]
 OSU 6807 Jilt 5133
 #OSU 869B Jilt 130C

#Emulation 31 [DWF-RDF]
 Ankony 8F78 Lass 8F275
 #Emulation 31 [DWF-RDF]
 Primrose N Bar 9962

#QAS Traveler 23-4 [AMF-NHF]
 #Bemindful Maid DHD 0807
 OSU Prompter 869A
 +OSU Jilt 113Z

BW EPD	WW EPD	YW EPD	MILK EPD	MRB EPD	RE EPD	SW	SF	SG	S8
+0.2	+42	+80	+21	+1.17	+0.01	+26.92	+22.41	+12.99	+30.84

The Jilt cow family has done a tremendous job for several elite Oklahoma Angus operations, such as A-Cross, OSU and 3 Forks Ranch. I regret that we never flushed this cow, as she has weaned off the biggest natural fall-born calf each and every year she has been at J&J. Moderate framed, deep and wide, she is structurally flawless with great feet and udder quality. She produced the high selling fall bull in our 2009 sale, J&J Alternative 8907, selected by the Bickham family in Louisiana, and has done it again this year. Eye-catching pedigree tabulation—EXT on 6807!

• Bred AI 12/11/2009 to OSU Currency 8173. Safe in calf.

14A J&J Titlelist 9101

CALVED: 10/13/2009 • BULL: 16574018 • TATTOO: 9101

#BR Midland [AMF-NHF]
 EXAR Titlelist T011 [AMF-NHF]
 EXG Blackcap R054 R3

#N Bar Emulation EXT [AMF-NHF]
 +3F Jilt 4636of 5133 EXT
 OSU 6807 Jilt 5133

#Twin Valley Precision E161 [NHC-AMF-RDF]
 BR Royal Lass 7036-19
 EXAR Sudden Impact 1537 [AMF-NHF]
 EXG Blackcap N145 R3

#Emulation N Bar 5522
 N Bar Primrose 2424
 #DHD Traveler 6807 [AMF-NHF]
 #OSU 869B Jilt 130C

BW EPD	WW EPD	YW EPD	MILK EPD	MRB EPD	RE EPD	SW	SF	SG	S8
+10.9	1+46	1+86	1+21	1+.51	1+.08	+26.89	+26.74	+28.04	+42.44

• BW 79 lbs. Adj. WW 863 lbs.

In response to customer interest, last year we mated a select few Angus cows to OSU High Roller, the high selling bull at the 2009 Cowboy Classic. We have been pleased with the results and are now proud to offer these registered Angus cows with halfblood Simmental calves at side.



OSU High Roller 8608 Sire of Lots 15A, 16A and 17A

15

EXAR Rosetta 3376 [NHF]

CALVED: 8/22/2006 • COW: 15419374 • TATTOO: 3376

#Bon View New Design 1407 [AMF-NHF] #B/R New Design 036 [AMF-NHF]
 #EXAR New Look 2971 [AMF-NHF] Bon View Pride 664
 N Bar Primrose 2424 #Emulation 31 [DWF-RDF]
 Primrose N Bar 9962

#Twin Valley Precision E161 [NHC-AMF-RDF] #GAR Precision 1680 [AMC-NHC]
 +EXAR Rosetta 3426 +WCC Blackcap C9 [RDC]
 +TM Rosetta 801E #+GAR Sleep Easy 1009 [AMF-NHF]
 Rosetta 131 of McCumber

BW EPD	WW EPD	YW EPD	MILK EPD	MRB EPD	RE EPD	\$W	\$F	\$G	\$B
+2.6	+41	+82	+20	+39	+22	+21.38	+24.72	+28.55	+46.01

Fabulous pair of females! A wet, highly maternal New Look daughter nursing a stout, attractively made High Roller heifer calf that looks like she will someday command attention in the show and sale ring.

- Breeding information available sale day.

Lot 15A Halfblood SimAngus heifer calf born 1/21/2010, tattoo 007, by OSU High Roller 8608. BW 79 lbs.

16

DCF Miss Rowena 7640

CALVED: 3/17/2007 • COW: +15909534 • TATTOO: 7640

#Sitz Traveler 8180 [AMF-NHF] #GDAR Traveler 71 [AMF-NHF]
 #SAV 8180 Traveler 004 [AMF-NHF-RDF] Sitz Everelda Entense 1137
 +Boyd Forever Lady 8003 #AAR New Trend
 SVF Forever Lady 57D

#CA Future Direction 5321 [AMC-NHC] #GAR Precision 1680 [AMC-NHC]
 WK Miss Rowena 2423 [AMF-NHF] CA Miss Power Fix 308 [AMF]
 +WK Miss Rowena 0505 #WK Gunsmoke
 #+Grubbs Miss Rowena 23

BW EPD	WW EPD	YW EPD	MILK EPD	MRB EPD	RE EPD	\$W	\$F	\$G	\$B
+2.7	+47	+85	+23	+21	+16	+25.24	+25.38	+10.69	+35.10

Solid black, sound, big bodied halfblood Simmental heifer calf nursing a highly productive 004 daughter. 7640 has a great deal of potential and offers a wide variety of future mating options.

- Breeding information available sale day.

Lot 16A Halfblood SimAngus heifer calf born 2/10/2010, tattoo 022, by OSU High Roller 8608. BW 85 lbs.

17

J&J Dixie Erica 5136

CALVED: 10/13/2005 • COW: +15352663 • TATTOO: 5136

#Twin Valley Precision E161 [NHC-AMF-RDF] #GAR Precision 1680 [AMC-NHC]
 #BR Midland [AMF-NHF] +WCC Blackcap C9 [RDC]
 BR Royal Lass 7036-19 #+SAF Neutron [AMF-NHF]
 #SAF Royal Lass 7036

#B/R New Design 323 #B/R New Design 036 [AMF-NHF]
 +J&J Dixie Erica 227 B/R Ruby of Tiffany 155
 Dixie Erica of RR 7530 #E&B 1483 Scotchman 5041
 #Dixie Erica of RR 3506

BW EPD	WW EPD	YW EPD	MILK EPD	MRB EPD	RE EPD	\$W	\$F	\$G	\$B
+1.6	+41	+76	+15	+58	+23	+23.78	+18.96	+35.02	+43.86

5136 is a very nice four-year-old cow that descends from the Rollin Rock Dixie Erica family. Sired by Midland, this "Bob" granddaughter ranks in the top 5% of Angus dams for Marbling EPD and the top 3% for \$Grid. Her bull calf at side will work well for those looking for a herd sire to use in making low percentage Simmental females.

- Breeding information available sale day.

Lot 17A Halfblood SimAngus bull calf born 3/15/2010, tattoo 028, by OSU High Roller 8608. BW 95 lbs.





MCS

Twin yearling heifers by Mytty In Focus

Lot 18B J&J Nina 902



MCS

Lot 18C
J&J Nina 9002

Pedigree for Lots 18B-18C:

#SAF Focus of ER [AMF-NHF] Mytty In Focus [AMF-NHF-RDF] Mytty Countess 906	#SAF Fame [AMF-NHF] GDAR Forever Lady 246 #Sitz Alliance 6595 [AMF-NHF] Baldrige Countess 357
TC Total 410 [AMF-NHF] Blackjacks Nina 721 Blackjacks Nina 506	#Bon View New Design 208 [AMF-NHF] +TC Erica Eileen 2047 [NHC-AMF] +EXAR Numerical 3919 [AMF-NHF] WK Nina 8513

18

Blackjacks Nina 721

CALVED: 1/17/2007 • COW: 15904789 • TATTOO: 721

#Bon View New Design 208 [AMF-NHF] TC Total 410 [AMF-NHF] +TC Erica Eileen 2047 [NHC-AMF]	#B/R New Design 036 [AMF-NHF] #Bon View Erica 443 #Twin Valley Precision E161 [NHC-AMF-RDF] #+TC Erica Eileen 5116
+EXAR Numerical 3919 [AMF-NHF] Blackjacks Nina 506 WK Nina 8513	#BR Midland [AMF-NHF] +Leachman Erica 6267 #OGL Battle Cry 427 128 +WK Nina 4372

BW EPD	WW EPD	YW EPD	MILK EPD	MRB EPD	RE EPD	\$W	\$F	\$G	\$B
+2.7	+55	+103	+24	+53	+32	+25.45	+40.42	+28.39	+52.03

721 is a productive young cow featured with her three offspring—a stout spring 2010 bull calf at side and the twin heifer calves she raised as a two year old last year.

• Breeding information available sale day.

Lot **18A** Bull calf born 1/18/2010, tattoo 001, by OSU Currency 8173. BW 83 lbs.

18B

J&J Nina 902

CALVED: 1/13/2009 • (TWIN) COW: 16577635 • TATTOO: 902

BW EPD	WW EPD	YW EPD	MILK EPD	MRB EPD	RE EPD	\$W	\$F	\$G	\$B
+0.7	+55	+102	+25	+57	+30	+29.25	+39.38	+30.51	+49.08

IMF ratio 101. REA ratio 120.

• BW 61 lbs. Adj. WW 692 lbs. Adj. IMF 4.66%. Adj. REA 12.8 sq. in.
• Breeding information available sale day.

18C

J&J Nina 9002

CALVED: 1/13/2009 • (TWIN) COW: 16580899 • TATTOO: 9002

BW EPD	WW EPD	YW EPD	MILK EPD	MRB EPD	RE EPD	\$W	\$F	\$G	\$B
+0.7	+55	+102	+25	+55	+03	+29.25	+39.38	+26.32	+44.89

• BW 61 lbs. Adj. WW 727 lbs. Adj. IMF 4.23%. Adj. REA 9.8 sq. in.
• Breeding information available sale day.

19

J&J Blanche 7126

CALVED: 5/21/2007 • COW: +15972357 • TATTOO: 7126

#PS Power Play [RTF] #Early Sunset Emulous 60E
 #Scotch Cap [AMF-NHF] PS Menteith Blanche 205
 #Hoff Band O7 of SC 509 Band 105 of SC 579
 Emulous E of SC 4

#Connealy Frontline [AMF-NHF] #Connealy Dateline
 +Leachman Blanche 1218 #Pleasant Pill of Conanga
 Leachman Blanche 5001 #Tehama Bando 155 [AMF-NHF]
 Leachman Blanche 3007

BW EPD	WW EPD	YW EPD	MILK EPD	MRB EPD	RE EPD	\$W	\$F	\$G	\$B
+4.2	+39	+74	+17	+33	+1.17	+17.77	+17.80	+23.39	+42.74

Here is a pair offering "old school," tried-and-true carcass genetics. This young Scotch Cap daughter has been bred to Bando 155.

- Bred AI 4/19/2010 to Tehama Bando 155.

Lot 19A Heifer calf born 2/08/2010, tattoo 018, by Bon View New Design 1407. BW 79 lbs.

20

J&J Blanche 806

CALVED: 2/01/2008 • COW: 16233639 • TATTOO: 806

Boyd On Target 1083 [AMF-NHF] #+SAF 598 Bando 5175 [AMF]
 Stevenson Moneymaker R185 [AMF-NHF] +Boyd Forever Lady 7095
 #Stevenson Clova Pride L888 [AMF-NHF] VDAR Ambush 2478
 Stevenson Clova Pride 712H

#+EXAR New Look 2971 [AMF-NHF] #Bon View New Design 1407 [AMF-NHF]
 J&J Blanche 553 N Bar Primrose 2424
 +Leachman Blanche 1218 #Connealy Frontline [AMF-NHF]
 Leachman Blanche 5001

BW EPD	WW EPD	YW EPD	MILK EPD	MRB EPD	RE EPD	\$W	\$F	\$G	\$B
+2.5	+48	+92	+20	+37	+0.03	+23.53	+31.93	+22.33	+37.95

806 is from the same cow family as Lot 19. This is another very nice pair of females—the Moneymaker two year old nursing a stylish daughter of Northern Improvement.

- Breeding information available sale day.

Lot 20A Heifer calf born 1/21/2010, tattoo 005, by Northern Improvement 4480 GF. BW 72 lbs.

21

J&J Chantilly 8102

CALVED: 1/23/2008 • COW: +16237878 • TATTOO: 8102

#QAS Traveler 23-4 [AMF-NHF] #Band 234 of Ideal 3163
 #RR Traveler 5204 [AMF-NHF] QAS Blackbird Eve 601 1
 Eriskay of Rollin Rock 3302 Shoshone Vantage JB23
 Eriskay of Rollin Rock 7003

#+Rito 9FB3 of 5H11 Fullback [AMF-NHF] #Leachman Fullback
 OSU Chantilly 6184 Rita 5H11 of 1B14 Rito 9J9
 OSU Miss Promise 605A #+Leachman Prompter [AMF-NHF]
 #OSU Miss Piney 605

BW EPD	WW EPD	YW EPD	MILK EPD	MRB EPD	RE EPD	\$W	\$F	\$G	\$B
+0.7	+38	+67	+23	+27	-.01	+28.94	+11.67	+16.07	+33.65

8102 is a Traveler 5204 daughter with a big, stout 5041 bull calf at side. This two year old is a little thin but is doing a great job raising her calf. 8102 traces back to one of the best cow families at OSU. Chantilly 6184, her donor dam, topped the 1995 Cowboy Classic at \$37,000.

- Breeding information available sale day.

Lot 21A Bull calf born 2/04/2010, tattoo 016, by E&B 1483 Scotchman 5041. BW 88 lbs.

22

J&J Oakleaf 8117 [NHF]

CALVED: 1/17/2008 • COW: +16168378 • TATTOO: 8117

#Bon View New Design 1407 [AMF-NHF] #B/R New Design 036 [AMF-NHF]
 #+EXAR New Look 2971 [AMF-NHF] Bon View Pride 664
 N Bar Primrose 2424 #Emulation 31 [DWF-RDF]
 Primrose N Bar 9962

#Twin Valley Precision E161 [NHC-AMF-RDF] #GAR Precision 1680 [AMC-NHC]
 J&J E161 Oakleaf 303 +WCC Blackcap C9 [RDC]
 +J&J Oakleaf 117 #+A&B Yukon 7150 [AMF-NHF]
 WAF Rally Oakleaf 5144

BW EPD	WW EPD	YW EPD	MILK EPD	MRB EPD	RE EPD	\$W	\$F	\$G	\$B
+3.3	+47	+93	+19	+30	+1.18	+20.54	+33.33	+24.83	+49.65

This wet two-year-old New Look daughter traces back to one of our foundation donors. Another young cow that is a little thin but is doing a great job raising her calf. Her flushmate brother, J&J New Look 8118, was used as a cleanup bull last summer.

- Breeding information available sale day.

Lot 22A Bull calf born 2/09/2010, tattoo 019, by OSU Currency 8173. BW 71 lbs.

23

J&J Entella 8134

CALVED: 3/26/2008 • COW: +16168366 • TATTOO: 8134

#B/R New Design 036 [AMF-NHF] #VDAR New Trend 315 [AMF-NHF]
 #Bon View New Design 1407 [AMF-NHF] B/R Blackcap Empress 76
 Bon View Pride 664 #+GAR Sleep Easy 1009 [AMF-NHF]
 #Bon View Pride 1551

#BR Midland [AMF-NHF] #Twin Valley Precision E161 [NHC-AMF-RDF]
 +RR Entella 3677 BR Royal Lass 7036-19
 Tehama Entella G676 #Finks 5522-6148
 Tehama Entella A367

BW EPD	WW EPD	YW EPD	MILK EPD	MRB EPD	RE EPD	\$W	\$F	\$G	\$B
+1.3	+46	+84	+25	+79	+0.35	+27.93	+24.78	+38.47	+46.53

The Entella cows have done a very good job for us at J&J.

- Breeding information available sale day.

Lot 23A Bull calf born 2/22/2010, tattoo 024, by Gardens Prime Star. BW 80 lbs.

24

3C Shoshone Lady 4010

CALVED: 3/01/2004 • COW: 15276902 • TATTOO: 4010

#Paramont Ambush 2172 [AMF-NHF] #Bandolier Eston Durness 42B
 #BCC Bushwacker 41-93 [AMF-NHF] EWS Miss Burgess 1720
 RC Anita T Bando 918903 #Tehama Bando 155 [AMF-NHF]
 RC Traveling Ann 8903

#Leachman Explorer [AMF-NHF] #N Bar Emulation EXT [AMF-NHF]
 ALC Shoshone Lady 0006 Leachman Blackcap 9006
 RR Scotch Cap 1483 Shoshone 76 #RR 9440 Scotch Cap 1483 [AMF-NHF]
 #Corbinaire 624 Rito 21

BW EPD	WW EPD	YW EPD	MILK EPD	MRB EPD	RE EPD	\$W	\$F	\$G	\$B
+3.3	+47	+76	+17	+08	+05	+25.17	+16.77	+12.00	+28.75

4010 is in her prime and has a nice Currency heifer calf at her side.

- Breeding information available sale day.

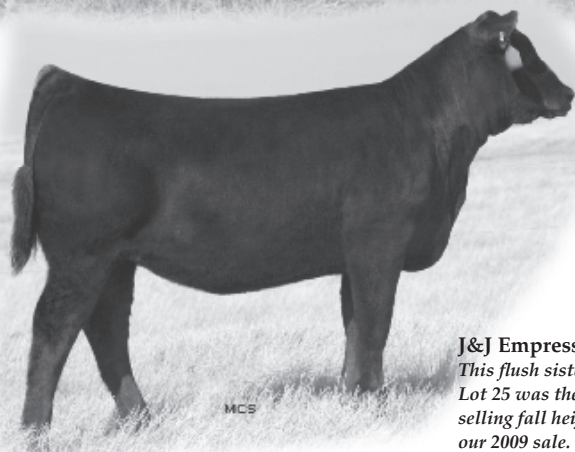
Lot 24A Heifer calf born 1/23/2010, tattoo 011, by OSU Currency 8173. BW 73 lbs.

Empress Family



EXAR Pit Boss 409 Sire of Lot 25

Lot 25
J&J Empress
9083



J&J Empress 8915
This flush sister to
Lot 25 was the high
selling fall heifer in
our 2009 sale.



J&J Racquel 8100 Flush sister to Lot 26, sold in our December 2008 sale

25

J&J Empress 9083

CALVED: 9/17/2009 • COW: +16574019 • TATTOO: 9083

EXAR Sudden Impact 1537 [AMF-NHF]
+EXAR Pit Boss 409 [AMF-NHF]
WK Winnie 7305

##Northern Improvement 4480 GF [AMF-NHF]
+BLR Blushing Pride 9097
##Krugerrands Moneyline
WK Winnie 5460

##Krugerrands Moneyline
+EXAR Empress 7630
+DF Empress 6079

##Krugerrand of Donamere 490 [AMF-NHF]
Ankony 5G00 Blackbird GC017
#Pine Drive Big Sky [AMF-NHF]
KAF Miss Jetliner 641 1B4

BW EPD	WW EPD	YW EPD	MILK EPD	MRB EPD	RE EPD	SW	SF	SG	S8
+1.7	+48	+79	+13	+1.14	+2.22	+26.97	+19.23	+21.17	+40.83

A flush sister to 9083 was our high selling fall-born female in the 2009 sale, going to the Phil Stehr family. This heifer is super powerful. She has the extra width, depth and sound structural base I like in cows. Given the Empress 6079 family history, this is one I consider an outstanding brood cow prospect.

- BW 80 lbs. Adj. WW 721 lbs.
- Sells open.

26

J&J Racquel 8101

CALVED: 1/13/2008 • COW: +16168359 • TATTOO: 8101

OCC Kirby 633K
BC Marathon 7022 [AMF-NHF]
Gibbet Hill Mignonne E37

##OCC Emblazon 854E
+OCC Blackbird 785H
#Papa Equator 2928 [AMF-NHF]
Gibbet Hill Mignonne TR 29

##N Bar Emulation EXT [AMF-NHF]
+OSU 6079 Racquel 8176
+DF Empress 6079

#Emulation N Bar 5522
N Bar Primrose 2424
#Pine Drive Big Sky [AMF-NHF]
KAF Miss Jetliner 641 1B4

BW EPD	WW EPD	YW EPD	MILK EPD	MRB EPD	RE EPD	SW	SF	SG	S8
+3.4	+48	+81	+20	+0.05	+4.49	+24.99	+21.13	+18.57	+39.34

This two year old is one that would have become a donor next year. Extremely correct, typey and good bodied, 8101 is good uddered, wet and raising a big, stout Lutton son. A maternal sister sells as Lot 29.

- Breeding information available sale day.

Lot 26A Bull calf born 3/01/2010, tattoo 025, by EXAR Lutton 1831.
BW 104 lbs.

27

J&J Racquel 5139

CALVED: 10/30/2005 • COW: +15352665 • TATTOO: 5139

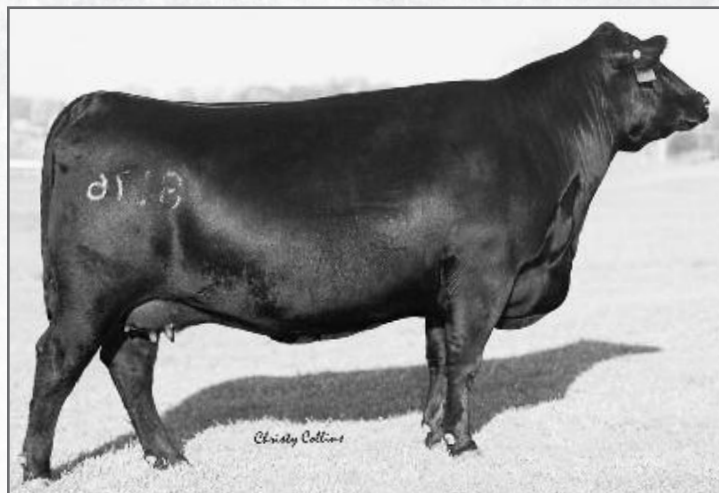
#Twin Valley Precision E161 [NHC-AMF-RDF] #GAR Precision 1680 [AMC-NHC]
 #BR Midland [AMF-NHF] +WCC Blackcap C9 [RDC]
 BR Royal Lass 7036-19 #+SAF Neutron [AMF-NHF]
 #SAF Royal Lass 7036
 #Bon View New Design 1407 [AMF-NHF] #B/R New Design 036 [AMF-NHF]
 +GB New Design 208 Bon View Pride 664
 +OSU 6079 Racquel 8176 #N Bar Emulation EXT [AMF-NHF]
 +DF Empress 6079

BW EPD	WW EPD	YW EPD	MILK EPD	MRE EPD	RE EPD	\$W	\$F	\$G	\$B
+0.9	+42	+80	+16	+73	+20	+24.46	+22.41	+37.04	+48.58

Lots 27 and 28 are a really productive pair of flush sisters. 5139 was flushed once, producing two transferable embryos. Excellent marbling genetics and a long, muscular bull calf by Raven at side.

• Breeding information available sale day.

Lot **27A** Bull calf born 2/10/2010, tattoo 021, by BC 7022 Raven 7965. BW 90 lbs.



OSU 6079 Racquel 8176 Lots 26-29 descend from this deceased donor dam "...at the very least, one of the most powerful and productive direct daughters ever produced by the immortal DF Empress 6079."

28

J&J Racquel 5142

CALVED: 11/02/2005 • COW: +15352667 • TATTOO: 5142

#Twin Valley Precision E161 [NHC-AMF-RDF] #GAR Precision 1680 [AMC-NHC]
 #BR Midland [AMF-NHF] +WCC Blackcap C9 [RDC]
 BR Royal Lass 7036-19 #+SAF Neutron [AMF-NHF]
 #SAF Royal Lass 7036
 #Bon View New Design 1407 [AMF-NHF] #B/R New Design 036 [AMF-NHF]
 +GB New Design 208 Bon View Pride 664
 +OSU 6079 Racquel 8176 #N Bar Emulation EXT [AMF-NHF]
 +DF Empress 6079

BW EPD	WW EPD	YW EPD	MILK EPD	MRE EPD	RE EPD	\$W	\$F	\$G	\$B
+0.8	+44	+82	+18	+60	+24	+25.99	+23.59	+35.30	+47.14

This fall calver is the flush sister to Lot 27. Her October heifer calf also sells.

• Sells safe in calf to J&J Moneymaker 8132, due by 11/01/2010.

29

J&J Racquel 5129

CALVED: 9/22/2005 • COW: +15352656 • TATTOO: 5129

#RR 9440 Scotch Cap 1483 [AMF-NHF] #RR Scotchcap 9440 [AMF-NHF]
 #E&B 1483 Scotchman 5041 Eriskay of Rollin Rock 8211
 Lady 183 Traveler 334 E&B Traveler 183
 Lady Stacker B23
 #N Bar Emulation EXT [AMF-NHF] #Emulation N Bar 5522
 +OSU 6079 Racquel 8176 N Bar Primrose 2424
 +DF Empress 6079 #Pine Drive Big Sky [AMF-NHF]
 KAF Miss Jetliner 641 1B4

BW EPD	WW EPD	YW EPD	MILK EPD	MRE EPD	RE EPD	\$W	\$F	\$G	\$B
+1.4	+34	+69	+17	+06	+29	+21.47	+14.94	+15.82	+35.45

Scotchman 5041 daughters have been excellent cows at J&J.

• Bred AI 11/25/2009 to SAV Net Worth 4200. Safe in calf.

28A

J&J Racquel 9099

CALVED: 10/12/2009 • COW: 16575353 • TATTOO: 9099

#B/R New Design 036 [AMF-NHF] #VDAR New Trend 315 [AMF-NHF]
 #GAR Predestined [AMF-NHF] B/R Blackcap Empress 76
 #+GAR EXT 4206 #N Bar Emulation EXT [AMF-NHF]
 +GAR 6807 Traveler 1432
 #BR Midland [AMF-NHF] #Twin Valley Precision E161 [NHC-AMF-RDF]
 +J&J Racquel 5142 BR Royal Lass 7036-19
 +GB New Design 208 #Bon View New Design 1407 [AMF-NHF]
 +OSU 6079 Racquel 8176

BW EPD	WW EPD	YW EPD	MILK EPD	MRE EPD	RE EPD	\$W	\$F	\$G	\$B
+3.0	+46	+91	+23	+86	+41	+22.05	+31.71	+38.48	+60.78

This October Predestined heifer calf is an excellent brood cow prospect with extra depth of rib and great genetics. Her interim EPDs ranks in the breed's top 2% for Marbling and top 15% for RE, resulting in a top 2% ranking for \$Grid and top 5% for \$Beef.

• BW 78 lbs. Adj. WW 647 lbs.
 • Sells open.

30

EXAR Empress 8994 [AMF-NHF]

CALVED: 9/26/2008 • COW: +16200562 • TATTOO: 8994

#B/R New Design 036 [AMF-NHF] #VDAR New Trend 315 [AMF-NHF]
 #Bon View New Design 1407 [AMF-NHF] B/R Blackcap Empress 76
 Bon View Pride 664 #+GAR Sleep Easy 1009 [AMF-NHF]
 #Bon View Pride 1551
 #BR Midland [AMF-NHF] #Twin Valley Precision E161 [NHC-AMF-RDF]
 +EXG Empress N802 R3 BR Royal Lass 7036-19
 +OSU 2928 Empress 4181 #Papa Equator 2928 [AMF-NHF]
 +DF Empress 6079

BW EPD	WW EPD	YW EPD	MILK EPD	MRE EPD	RE EPD	\$W	\$F	\$G	\$B
+1.8	+45	+87	+23	+71	+19	+25.07	+28.10	+33.18	+54.78

Check out the pedigree tabulation on 8994. This bred heifer traces back to the same Empress branch that resulted in OSU Empress 4123—dam of the Reserve National Western Pen of Three Angus Bulls in 2009. The mating to Northern Improvement should complement her well. This heifer was purchased with the intention of making a donor someday. Very powerful young female.

• Bred AI 11/26/2009 to Northern Improvement 4480 GF. Safe in calf.

Blackbird Family



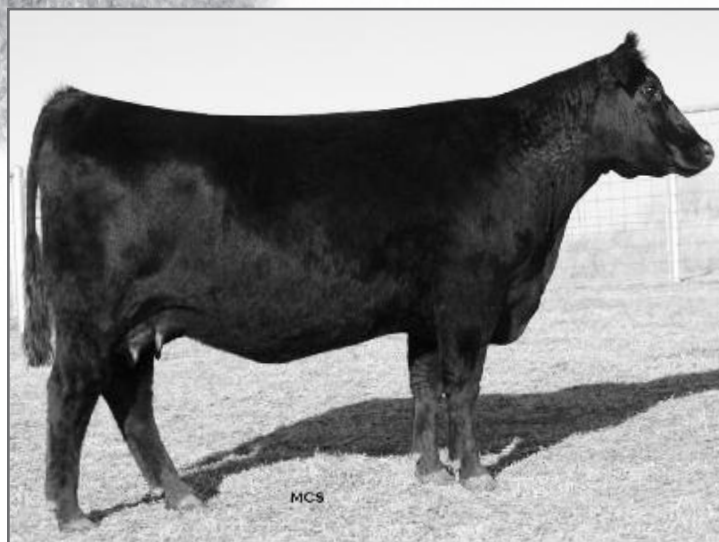
EXAR Titlelist T011 Sire of Lot 31

MCS

Lot 31 J&J Blackbird 9104

J&J Blackbird 536, the dam of Lots 31 and 32, was a favorite at J&J from the time she was a calf until she sold in our 2008 sale. She descends from one of our foundation donors, PAF Blackbird 6665, another cow that did a tremendous job for us here at J&J and was the producer of several past feature females. 536 was noted as being flawless in her structural base, well balanced and stout in bone and muscle thickness. She was flushed once as a two year old and produced 18 No. 1 embryos, which resulted in a great set of February 2008 calves by Moneymaker that included 808, selling as Lot 32.

This is a great cow family that offers a tempting variety of mating options. They are not only extremely hairy with the stoutness and correctness to be and produce show cattle but also have solid EPDs.



MCS

J&J Blackbird 536 Dam of Lots 31 and 32

31

J&J Blackbird 9104

CALVED: 10/18/2009 • COW: +16574017 • TATTOO: 9104

#BR Midland [AMF-NHF]
EXAR Titlelist T011 [AMF-NHF]
EXG Blackcap R054 R3

#Twin Valley Precision E161 [NHC-AMF-RDF]
BR Royal Lass 7036-19
EXAR Sudden Impact 1537 [AMF-NHF]
EXG Blackcap N145 R3

EXAR Lutton 1831 [AMF-NHF]
+J&J Blackbird 536
PAF Blackbird 6665

#+Northern Improvement 4480 GF [AMF-NHF]
EXAR Saras Dream 9809
#N Bar Emulation EXT [AMF-NHF]
PAF Blackbird 4170

BW EPD	WW EPD	YW EPD	MILK EPD	MRB EPD	RE EPD	\$W	\$F	\$G	\$B
+1.6	+48	+92	+19	+54	+09	+25.11	+31.93	+29.25	+49.34

9104 is a big ribbed, easy keeping, very sound footed Titlelist daughter. She should show well and make an excellent cow.

- BW 77 lbs.
- Sells open.

32

J&J Blackbird 808

CALVED: 2/01/2008 • COW: +16168370 • TATTOO: 808

Boyd On Target 1083 [AMF-NHF]
Stevenson Moneymaker R185 [AMF-NHF]
#Stevenson Clova Pride L888 [AMF-NHF]

#SAF 598 Bando 5175 [AMF]
+Boyd Forever Lady 7095
VDAR Ambush 2478
Stevenson Clova Pride 712H

EXAR Lutton 1831 [AMF-NHF]
+J&J Blackbird 536
PAF Blackbird 6665

#+Northern Improvement 4480 GF [AMF-NHF]
EXAR Saras Dream 9809
#N Bar Emulation EXT [AMF-NHF]
PAF Blackbird 4170

BW EPD	WW EPD	YW EPD	MILK EPD	MRB EPD	RE EPD	\$W	\$F	\$G	\$B
+2.7	+55	+105	+18	+34	-.04	+23.39	+42.51	+17.41	+43.76

808 is an impressive two-year-old Moneymaker daughter who ranks in the top 1% of Angus dams for YW and \$F and the top 3% for WW. Her bull calf at side has herd sire potential.

- Breeding information available sale day.

Lot **32A** Bull calf born 2/15/2010, tattoo 023, by GDAR Traveler 044. BW 91 lbs.

33

MDF Exacty Focus 0758

CALVED: 9/04/2007 • COW: 16081848 • TATTOO: 0758

#SAF Focus of ER [AMF-NHF]
Mytty In Focus [AMF-NHF-RDF]
Mytty Countess 906

#SAF Fame [AMF-NHF]
GDAR Forever Lady 246
#Sitz Alliance 6595 [AMF-NHF]
Baldrige Countess 357

Roth Exacto 0288
MDF JLF Exacty 0553
CF Scotch Threat 3499

#JLB Exacto 416 [AMF-NHF]
+Twin Oak Oakleaf 222
#RR Scotchcap 9440 [AMF-NHF]
CF Prompt Threat 2894

BW EPD	WW EPD	YW EPD	MILK EPD	MRB EPD	RE EPD	SW	SF	SG	S8
-1.6	+55	+94	+26	1+.40	1-.07	+34.04	+31.22	+23.77	+40.19

0758 and her heifer calf are a pair of females with big-time cow potential, extra rib and rankings in the upper percentiles of the breed for genetic potential. The females we have purchased from Frey Angus have done a great job in production at J&J.

• Bred AI 12/11/2009 to SAV Bismarck 5682. Safe in calf.

34

EXAR Queen 5504

CALVED: 1/01/2005 • COW: 14912405 • TATTOO: 5504

#Twin Valley Precision E161 [NHC-AMF-RDF]
#BR Midland [AMF-NHF]
BR Royal Lass 7036-19

#GAR Precision 1680 [AMC-NHC]
+WCC Blackcap C9 [RDC]
#+SAF Neutron [AMF-NHF]
#SAF Royal Lass 7036

#TC Moonshine 001
EXAR Queen 3508
EXAR Queen 1538

#Connealy Forefront [AMF-NHF]
TC Moonshine 7002
#Bon View New Design 1407 [AMF-NHF]
EXAR Queen 9664

BW EPD	WW EPD	YW EPD	MILK EPD	MRB EPD	RE EPD	SW	SF	SG	S8
+0.3	+44	+82	+16	+34	+30	+26.45	+23.59	+21.14	+34.91

This is an extra good pair of cattle my friend Les Jones from KB Cattle Co. helped me find from their sale last October.

• Bred AI 12/11/2009 to EXAR Spartan 6225. Safe in calf.

33A

J&J Exacty Focus 9076

CALVED: 9/08/2009 • COW: 16576435 • TATTOO: 9076

#+GAR Grid Maker [AMF-NHF]
+SAV Bismarck 5682 [AMF-NHF]
SAV Abigale 0451

#GDAR Traveler 044 [AMF-NHF]
GAR Precision 2536 [AMC-NHF]
#Schoenes Fix It 826 [AMF-NHF]
SAV Abigale 6062

Mytty In Focus [AMF-NHF-RDF]
MDF Exacty Focus 0758
MDF JLF Exacty 0553

#SAF Focus of ER [AMF-NHF]
Mytty Countess 906
Roth Exacto 0288
CF Scotch Threat 3499

BW EPD	WW EPD	YW EPD	MILK EPD	MRB EPD	RE EPD	SW	SF	SG	S8
1-0.8	1+63	1+98	1+26			+37.55	+32.12		

Note that 9076 is sired by the bull that also sired the Grand and Reserve Champion Owned Angus females at the 2009 National Junior Angus Show. Check out the terrific birth to weaning EPD spread on this heifer calf.

• BW 62 lbs. Adj. WW 782 lbs.

• Sells open.

34A

KB Queen of Spartan 9504

CALVED: 9/06/2009 • COW: 16486639 • TATTOO: 9504

EXAR Lutton 1831 [AMF-NHF]
+EXAR Spartan 6225 [AMF-NHF]
WK Winnie 7305

#+Northern Improvement 4480 GF [AMF-NHF]
EXAR Saras Dream 9809
#+Krugerrands Moneyline
WK Winnie 5460

#BR Midland [AMF-NHF]
EXAR Queen 5504
EXAR Queen 3508

#Twin Valley Precision E161 [NHC-AMF-RDF]
BR Royal Lass 7036-19
#TC Moonshine 001
EXAR Queen 1538

BW EPD	WW EPD	YW EPD	MILK EPD	MRB EPD	RE EPD	SW	SF	SG	S8
1+2.1	1+40	1+88	1+18	1+.30	1+.19	+19.32	+21.03	+23.22	+44.70

This September heifer calf by Spartan could be one of the "sleepers" in this sale. Stout hipped and extra typey, this heifer just continues to get more impressive.

• BW 75 lbs. Adj. WW 544 lbs.

• Sells open.



MCS

Lot 33A

J&J Exacty Focus 9076



MCS

Lot 34A

KB Queen of Spartan 9504

Fall Cow/Calf Pairs

35

Rollin Rock Blackbird 4346

CALVED: 2/20/2004 • COW: 14774883 • TATTOO: 4346

#RR Hero 6267
#Hero 6267 of RR 2418
RR Everelda Entense 0413

#Highwood Hero LCH
#Blackbird of RR 1204
#QAS Traveler 23-4 [AMF-NHF]
RR Everelda Entense 8320 TPB

N Bar Explosion V1495
#CH Blackbird 9487
#CH Blackbird 5756

#N Bar Explosion
#N Bar Kinochtry Beauty 4317
#RR Regal 1459 [AMF-NHF]
Blackbird of CH 6040

BW EPD	WW EPD	YW EPD	MILK EPD	MRB EPD	RE EPD	SW	Sf	SG	Sb
+2.3	+47	+70	+30	-.02	+.02	+32.47	+11.22	+6.69	+17.97

This cow has consistently done a good job raising calves. Out of a Pathfinder dam and grandam.

- Breeding information available sale day.



Lot 35A J&J Blackbird 9086

35A

J&J Blackbird 9086

CALVED: 9/22/2009 • COW: 16580852 • TATTOO: 9086

EXAR Lutton 1831 [AMF-NHF]
+EXAR Spartan 6225 [AMF-NHF]
WK Winnie 7305

#+Northern Improvement 4480 GF [AMF-NHF]
EXAR Saras Dream 9809
#+Krugerrands Moneyline
WK Winnie 5460

#Hero 6267 of RR 2418
Rollin Rock Blackbird 4346
#CH Blackbird 9487

#RR Hero 6267
RR Everelda Entense 0413
N Bar Explosion V1495
#CH Blackbird 5756

BW EPD	WW EPD	YW EPD	MILK EPD	MRB EPD	RE EPD	SW	Sf	SG	Sb
+2.6	+53	+82	+25	+1.12	+1.05	+30.97	+20.24	+16.10	+35.07

This 9086 heifer has been a favorite of many visitors. She is as correctly structured and sound as any in the sale. Another prospect with the potential to command attention.

- BW 80 lbs. Adj. WW 718 lbs.
- Sells open.

36

J&J 1407 F011 576

CALVED: 9/11/2005 • COW: 15132218 • TATTOO: 576

#B/R New Design 036 [AMF-NHF]
#Bon View New Design 1407 [AMF-NHF]
Bon View Pride 664

#VDAR New Trend 315 [AMF-NHF]
B/R Blackcap Empress 76
#+GAR Sleep Easy 1009 [AMF-NHF]
#Bon View Pride 1551

#Alberda Traveler 416 [AMF-NHF]
PAF 861 AT F011
PAF 328 EXT 861

#DHD Traveler 6807 [AMF-NHF]
Alberda Queen Kimberly 222
#N Bar Emulation EXT [AMF-NHF]
#PAF Miss Lucy 328

BW EPD	WW EPD	YW EPD	MILK EPD	MRB EPD	RE EPD	SW	Sf	SG	Sb
+1.9	+36	+74	+23	+55	+.26	+22.30	+18.90	+30.02	+47.25

576 is a productive cow with a very broody heifer calf at her side.

- Sells safe in calf to J&J Moneymaker 8132. Due before 11/01/2010.

36A

J&J Lucy 9098

CALVED: 10/12/2009 • COW: 16580950 • TATTOO: 9098

#B/R New Design 036 [AMF-NHF]
#GAR Predestined [AMF-NHF]
#+GAR EXT 4206

#VDAR New Trend 315 [AMF-NHF]
B/R Blackcap Empress 76
#N Bar Emulation EXT [AMF-NHF]
+GAR 6807 Traveler 1432

#Bon View New Design 1407 [AMF-NHF]
J&J 1407 F011 576
PAF 861 AT F011

#B/R New Design 036 [AMF-NHF]
Bon View Pride 664
#Alberda Traveler 416 [AMF-NHF]
PAF 328 EXT 861

BW EPD	WW EPD	YW EPD	MILK EPD	MRB EPD	RE EPD	SW	Sf	SG	Sb
+2.7	+48	+87	+26	+84	+42	+25.89	+26.96	+35.77	+60.04

The 9098 heifer ties three generations of breed-leading marbling genetics in a pedigree with proven carcass potential. Top 2% Marbling, top 15% RE, top 5% \$G and \$B.

- BW 75 lbs. Adj. WW 687 lbs.
- Sells open.

37

J&J T510 Forever Lady 6126

CALVED: 12/28/2006 • COW: 15860490 • TATTOO: 6126

#DHD Traveler 6807 [AMF-NHF]
#SS Traveler 6807 T510 [AMF-NHF]
#SS Miss Hi Spade A114

#QAS Traveler 23-4 [AMF-NHF]
#Bemindful Maid DHD 0807
#Hoff Hi Spade SC 491
SS Miss Rito 0H3 5H9

#N Bar Emulation EXT [AMF-NHF]
+Jacs Forever Lady 5217
+Rocky Mt Forever Lady 715

#Emulation N Bar 5522
N Bar Primrose 2424
#DHD Traveler 6807 [AMF-NHF]
+GDAR Forever Lady 9500

BW EPD	WW EPD	YW EPD	MILK EPD	MRB EPD	RE EPD	SW	Sf	SG	Sb
-0.8	+34	+72	+19	+30	-0.4	+23.52	+17.74	+24.93	+31.37

6126 is moderate framed and easy keeping. Her pedigree ties together 6807 and EXT. This pair of females is bred to be productive, low maintenance and problem free.

- Bred AI 11/25/2009 to Bon View New Design 1407. Safe in calf.

37A

J&J Forever Lady 9089

CALVED: 10/04/2009 • COW: 16574014 • TATTOO: 9089

BC 7022 Raven 7965 [AMF-NHF]
+J&J Reality 791
+EXAR Empress 7630

BC Marathon 7022 [AMF-NHF]
OCC Blackbird 796F
#+Krugerrands Moneyline
+DF Empress 6079

#SS Traveler 6807 T510 [AMF-NHF]
J&J T510 Forever Lady 6126
+Jacs Forever Lady 5217

#DHD Traveler 6807 [AMF-NHF]
#SS Miss Hi Spade A114
#N Bar Emulation EXT [AMF-NHF]
+Rocky Mt Forever Lady 715

BW EPD	WW EPD	YW EPD	MILK EPD	MRB EPD	RE EPD	SW	Sf	SG	Sb
+1.4	+42		+15						

- BW 75 lbs. Adj. WW 698 lbs.
- Sells open.

38

J&J Blackbird 6663

CALVED: 2/17/2006 • COW: 15276808 • TATTOO: 6663

#Bon View New Design 1407 [AMF-NHF]
Sitz New Design 349M [AMF-NHF]
+Sitz Pride 166K

#B/R New Design 036 [AMF-NHF]
Bon View Pride 664
#Sitz Traveler 8180 [AMF-NHF]
#Sitz Pride 842

#Rito 616 of 4B20 6807 [AMF-NHF]
Rollin Rock Blackbird 4060
#Rollin Rock Blackbird 2814

#DHD Traveler 6807 [AMF-NHF]
+Rita 4B20 of 0FB1 Bando
##HA Image Maker 0415 [AMF-NHF]
Rollin Rock Blackbird 9927

BW EPD	WW EPD	YW EPD	MILK EPD	MRB EPD	RE EPD	\$W	\$F	\$G	\$B
+0.7	+49	+91	+30	+44	+1.4	+29.16	+30.54	+27.96	+45.97

6663 is a good young cow descending from Rollin Rock genetics. She combines an impressive EPD profile, ranking in the top 15% or higher for BW, WW, YW, Milk, Marbling and all \$Values, including a top 4% Milk EPD.

• Bred AI 12/11/2009 to OSU Currency 873. Safe in calf.

39

EXAR Winnie 8449 [AMF]

CALVED: 9/17/2008 • COW: +16122817 • TATTOO: 8449

BC Marathon 7022 [AMF-NHF]
BC 7022 Raven 7965 [AMF-NHF]
OCC Blackbird 796F

OCC Kirby 633K
Gibbet Hill Mignonne E37
#OCC Bonanza 880B
OCC Blackbird 779A

EXAR Lutton 1831 [AMF-NHF]
+EXAR Winnie 4371
WK Winnie 7305

##Northern Improvement 4480 GF [AMF-NHF]
EXAR Saras Dream 9809
##Krugerrands Moneyline
WK Winnie 5460

BW EPD	WW EPD	YW EPD	MILK EPD	MRB EPD	RE EPD	\$W	\$F	\$G	\$B
+2.4	+48	+82	+17	+30	+23	+25.97	+22.09	+25.22	+50.49

Successful show ring genetics throughout this heifer's pedigree.

• Bred AI 11/26/2009 to OSU Currency 8173. Safe in calf.



STILLWATER MILLING CO.

(405) 372-2766

(800) 364-1671

Address:

502 East Sixth Street

Stillwater, OK 74074

REPRODUCTION SERVICES

Embryo Transfer Fee Schedule

Flush fee \$325 in clinic
Flush fee \$300 on farm
Freeze fee \$100 / cow
Transfer fee \$ 60

Ultrasound Services

Carcass ultrasound \$17 / head
Fetal sexing \$20 / head

- ◆ On-farm services available
- ◆ No group too small

Call us about A.I. and palpation training schools.

Reproduction Enterprises, Inc.
908 N. Prairie Rd. Stillwater, OK 74075
1-866-REI-BULL 1-405-377-8037
Fax: (405) 377-4541
www.reproductionenterprises.com



Black Gold Angus

Lots 40-42 are offered by John Freeman's Black Gold Angus, Centerton, Arkansas.



Dalton's Blackbird 1262 Dam of Lot 40

Lot 40

Black Gold Blackbird 7058

40

Black Gold Blackbird 7058

CALVED: 11/02/2007 • COW: +16280486 • TATTOO: 7058

#Emulation N Bar 5522
#N Bar Emulation EXT [AMF-NHF]
N Bar Primrose 2424

#Emulation 31 [DWF-RDF]
Ankony 8F78 Lass 8F275
#Emulation 31 [DWF-RDF]
Primrose N Bar 9962

#GAR Precision 1680 [AMC-NHC]
+Dalton's Blackbird 1262 [AMF-NHF]
OCC Blackbird 833E

#Tehama Bando 155 [AMF-NHF]
9J9 GAR 856 [NHF]
#DHD Traveler 6807 [AMF-NHF]
OCC Blackbird 778A

BW EPD	WW EPD	YW EPD	MILK EPD	MRB EPD	RE EPD	\$W	\$F	\$G	\$B
+1.5	+44	+89	+20	+20	+1.8	+23.74	+30.48	+13.73	+45.60

This productive young female exemplifies the udder quality and maternal strength expected from the blending of EXT and 6807. Blackbird 1262, the dam of 7058, was working as a donor in the Limestone and Black Gold Angus programs before joining the herd at SaddleRiver as their \$16,000 selection from the 2008 Limestone sale, where two maternal sisters to 7058 sired by Raven sold for \$20,000 and \$9,000. Another maternal sister by SAV 8180 Traveler 004 sold in the 2008 J&J sale for \$7,000 to SaddleRiver Trust. Through the 2007 Limestone sale, two heifer pregnancies from this proven donor were selected by Turner Farms for \$10,500 each, while a daughter sold to NER Farms. Other daughters of 1262 include Blackbird 5206, the selection of Herdland Angus through the 2006 Dalton sale; and Blackbird 4282, the selection of Seagraves Angus through the 2005 Dalton Sale. Boruff's Creekside Angus selected a heifer calf pregnancy from Blackbird 1262 through the 2005 Dalton sale for \$3,600. Ten frozen embryos from Blackbird 1262 sold for \$400 each.

Blackbird 1262 is a daughter of the \$13,250 former Dalton donor Blackbird 833E, who records progeny ratios of BW 3@97, WW 3@110 and YW 1@107 while posting an ultrasound REA ratio 9@104. Fifteen daughters of Blackbird 833E maintain a combined WW ratio of 43@103. Lindell Angus selected a flush sister to Blackbird 1262 through the 2003 Dalton sale for \$8,400, while Mead Angus acquired a flush brother for \$6,200 through the 2003 Perform Angus Bull Sale.

• Bred AI 3/01/2010 to Garret's Nationwide 800I. Safe in calf.



Lot 40A

Black Gold Blackbird 9077

40A

Black Gold Blackbird 9077

CALVED: 9/06/2009 • COW: 16594806 • TATTOO: 9077

#SAV Final Answer 0035 [AMF-NHF]
SAV Pioneer 7301 [AMF-NHF]
SAV Blackbird 5297

#Sitz Traveler 8180 [AMF-NHF]
SAV Emulous 8145
##Boyd New Day 8005 [AMF-NHF]
SAV Blackbird 1082

#N Bar Emulation EXT [AMF-NHF]
+Black Gold Blackbird 7058
+Dalton's Blackbird 1262 [AMF-NHF]

#Emulation N Bar 5522
N Bar Primrose 2424
#GAR Precision 1680 [AMC-NHC]
OCC Blackbird 833E

BW EPD	WW EPD	YW EPD	MILK EPD	MRB EPD	RE EPD	\$W	\$F	\$G	\$B
+2.1	+55	+101	+24	+25	+40	+27.33	+38.34	+16.26	+47.90

This September heifer calf and future donor ranks in the top 10% of non-parent Angus females for WW, YW and \$F.

• Sells open.



J&J 5175 Eriskay 330 Dam of Lots 41A-41B and 42

Lots 41A-B and 42 are yearling donor prospects out of J&J 5175 Eriskay 330. Their dam is an outstanding growth and carcass female sired by Bando 5175 and stemming from the \$40,000 EXAR Eriskay Q38 0441, who was selected by J&J Cattle Co. as the high selling bred heifer from the 2001 Express Ranches sale. Eriskay 0441 is a daughter of the former Express Ranches donor Traveler 6807 Q38, who is a 7/8 sister to the Select Sires carcass and maternal sire RR Traveler 5204. She descends from the famed Eriskay cow family from Rollin Rock.

Full sisters to the dam of 330 include Eriskay Q38 0678, the \$25,000 feature of the Blue Q Ranch consignment to the 2007 Cool Spring Plantation Sale who sold to Monarch Farms, while her daughter sold to Cool Spring for \$10,000.

Pedigree for Lots 41A-41B:

#Emulation N Bar 5522	#Emulation 31 [DWF-RDF]
#N Bar Emulation EXT [AMF-NHF]	Ankony 8F78 Lass 8F275
N Bar Primrose 2424	#Emulation 31 [DWF-RDF]
	Primrose N Bar 9962
#+SAF 598 Bando 5175 [AMF]	#Bon View Bando 598 [AMF]
+J&J 5175 Eriskay 330	+SAF Royal Lass 1002
+EXAR Eriskay Q38 0441	#Bon View New Design 1407 [AMF-NHF]
	+VT Traveler 6807 Q38

(Offered jointly by J&J and Black Gold Angus)



EXAR Eriskay Q38 0441 Maternal grandam of Lots 41A-B and 42

42 J&J Eriskay 9138

CALVED: 3/25/2009 • COW: +16575234 • TATTOO: 9138

#Rito 616 of 4B20 6807 [AMF-NHF]	#DHD Traveler 6807 [AMF-NHF]
+Rito 112 of 2536 Rito 616 [AMF-NHF]	+Rita 4B20 of 0FB1 Bando
GAR Precision 2536 [AMC-NHF]	#GAR Precision 1680 [AMC-NHC]
	+GAR EXT 2104
#+SAF 598 Bando 5175 [AMF]	#Bon View Bando 598 [AMF]
+J&J 5175 Eriskay 330	+SAF Royal Lass 1002
+EXAR Eriskay Q38 0441	#Bon View New Design 1407 [AMF-NHF]
	+VT Traveler 6807 Q38

BW EPD	WW EPD	YW EPD	MILK EPD	MRB EPD	RE EPD	SW	Sf	Sc	Sb
+3.2	+54	+100	+24	+64	-.11	+24.64	+37.71	+33.21	+50.30

High growth and marbling genetics in this yearling daughter of Eriskay 330. 9138 recorded a %IMF ratio of 114. Offered jointly by J&J and Black Gold Angus.

- BW 80 lbs. Adj. IMF 5.22%. Adj. REA 7.8 sq. in.
- Sells open.

41A J&J Black Gold EXT 9009

CALVED: 2/27/2009 • COW: +16561971 • TATTOO: 9009

BW EPD	WW EPD	YW EPD	MILK EPD	MRB EPD	RE EPD	SW	Sf	Sc	Sb
+3.0	+44	+84	+22	+27	+08	+22.56	+25.54	+18.38	+42.30

- Bred AI 3/16/2010 to SAV Bismarck 5682. Safe in calf.

41B J&J Black Gold EXT 9014

CALVED: 3/09/2009 • COW: +16561970 • TATTOO: 9014

BW EPD	WW EPD	YW EPD	MILK EPD	MRB EPD	RE EPD	SW	Sf	Sc	Sb
+3.0	+44	+84	+22	+48	+10	+22.56	+25.54	+25.44	+47.28

- Bred AI 3/01/2010 to SAV Pioneer 7301. Safe in calf.



Lot 41B J&J Black Gold EXT 9014

Lots 43–52 are offered by A-Cross Ranch, Hammon, Oklahoma.



KCF Miss 6106 R575 Dam of Lot 43 pregnancy

Chris Mitchell



EXAR 263C Sire of Lot 43 pregnancy

Heifer Calf Pregnancy

43

EXAR 263C × R575

Heifer Calf Pregnancy

#Bon View New Design 1407 [AMF-NHF]
EXAR 263C [AMF-NHF]
EXAR June C 3577

#+Wulffs EXT 6106
+KCF Miss 6106 R575
KCF Miss 589 L182

#B/R New Design 036 [AMF-NHF]
Bon View Pride 664
#BR Midland [AMF-NHF]
PAF 9611 616 1161

#N Bar Emulation EXT [AMF-NHF]
Wulffs Erica Dianna C116
#Jauer 353 Traveler 589 27
CSU Miss Ambush 5193

	BW EPD	WW EPD	YW EPD	MILK EPD	MRB EPD	RE EPD	SW	Sf	SG	Sb
S:	+1.4	+58	+115	+38	+80	+.35	+29.67	+51.98	+36.37	+66.77
D:	+1.1	+54	+97	+32	+07	+.59	+32.40	+34.64	+17.85	+44.90

• Selling a guaranteed heifer calf pregnancy from the 263C x R575 mating, due 1/14/2011.

Miss R575 was the selection of A-Cross Ranch in the 2009 Blue Q Ranch Sale and is a direct daughter of Miss L182, the long-time feature of the joint embryo programs of Knoll Crest Farms and Three Trees Ranch. Miss R575 records 2@99 for BW and 2@112 for WW while showing an ultrasound REA ratio of 1@103.

Full sisters to R575 include Miss 5407, the featured Sundberg Farms and Wyf-fells Angus donor, as well as second generation donors in the Knoll Crest and Three Trees programs. Maternal siblings include Performer, the now-deceased Accelerated Genetics roster member; Miss Future S337, the \$30,000 top selling female of the Knoll Crest Farms sale to ZWT Angus; and Miss U310, the \$15,000 selection of Wattis Angus through the same event.

Progeny from Miss R575 include Miss 8194, the \$20,000 Objective OT26 selection of Three Trees Ranch; the \$18,000 co-top selling Prime Star heifer pregnancy in the Blue Q sale to BoBo Angus; and the \$7,500 Pendleton heifer calf selected by Express Ranches in the 2010 Bases Loaded Sale.

We are extremely excited about the genetic potential in this mating.

ELITE FEATURES FROM A-CROSS RANCH!



MCS

Lot 44

J&J AC Blackcap 9052



GAR Scotch Cap 867
Great-grandam of
Lot 44



2 Bar New Design 1407 3352 Dam of Lot 44

44

J&J AC Blackcap 9052

CALVED: 3/24/2009 • COW: +16583551 • TATTOO: 9052

#Emulation N Bar 5522
#N Bar Emulation EXT [AMF-NHF]
N Bar Primrose 2424

#Emulation 31 [DWF-RDF]
Ankony 8F78 Lass 8F275
#Emulation 31 [DWF-RDF]
Primrose N Bar 9962

#Bon View New Design 1407 [AMF-NHF]
2 Bar New Design 1407 3352
+GARLD 1489 Traveler 900

#B/R New Design 036 [AMF-NHF]
Bon View Pride 664
#GAR Traveler 1489 [AMF]
#GAR Scotch Cap 867

BW EPD	WW EPD	YW EPD	MILK EPD	MRB EPD	RE EPD	SW	SF	SG	S8
+1.4	+41	+79	+26	+43	+11	+28.95	+21.82	+22.91	+42.26

9052 is a big-time brood cow and donor prospect! This heifer is not only impressive in pedigree, sired by the immortal EXT and descending from the famous Blackcap family, but she also combines a functional look with tremendous individual performance. She balances a 70 lb. actual birth weight with an adjusted 205-day weight of 644. As a yearling, this heifer earned a ratio of 114 for IMF and scanned with an 11.4 square inch eye at 954 lbs. Her dam, the \$20,000-valued 3352, is as athletic, powerful and sound as you will find and is also featured in the Friday Night Embryo Auction. This heifer has endless profit-generating potential. Offered jointly by A-Cross and J&J.

• Breeding information available sale day.



Christy Collins

VAR Forever Lady 4304

Great-grandam of Lot 45

45

A Cross Forever Lady 9019

CALVED: 2/14/2009 • COW: 16417366 • TATTOO: 9019

Connealy Whitman [AMF-NHF]
Connealy All Around [AMF-NHF]
Entrust of Conanga 894

#Bon View New Design 208 [AMF-NHF]
Ella Tina of Conanga 989
#CRA Bextor 872 5205 608 [AMF-NHF]
Endalla of Conanga 4860

#BR Midland [AMF-NHF]
74-51 Forever Lady S029
+EXG Forever Lady P626 R3

#Twin Valley Precision E161 [NHC-AMF-RDF]
BR Royal Lass 7036-19
#Bon View New Design 1407 [AMF-NHF]
VAR Forever Lady 4304

BW EPD	WW EPD	YW EPD	MILK EPD	MRB EPD	RE EPD	SW	SF	SG	S8
+2.0	+57	+99	+24	+67	+24	+29.55	+35.49	+34.74	+53.16

This long bodied, deep ribbed cow prospect descends from the famous Forever Lady 4304. 4304 began early in life writing her own chapter in Angus history, capturing Reserve Grand Champion Female honors at the 1996 National Western Stock Show. Her legacy has carried on through her progeny. Daughters of 4304 include the \$95,000 top-selling show heifer prospect of the 2005 EXAR Big Event that went on to sell half interest at private treaty for \$100,000 after being chosen Reserve Grand Champion of the 2006 National Western as a heifer calf. That same female, Forever Lady 5309, was named Grand Champion at the 2007 Western National Angus Futurity and sold a flush to Stevenson Basin in the 2007 EXAR Big Event for \$75,000. The long list of other high-valued progeny from 4304 include the \$85,000 top-selling female of the 2006 Honor Roll Sale at Express, the \$51,000 Lot 1A heifer of the record-setting 2006 Big Event and a \$20,000 selection of the Schnoor family from California who went on to be a division champion at the 2006 National Junior Angus Show.

• Breeding information available sale day.



Lot 46
A Cross
Raquel A834

MCS

46

A Cross Raquel A834 [AMF-NHF]

CALVED: 2/19/2008 • COW: 16128988 • TATTOO: A834

#+EXAR New Look 2971 [AMF-NHF]
+J&J Double Take 550 [AMF-NHF]
+PF E161 Bardolena 3153 [NHF]

#Bon View New Design 1407 [AMF-NHF]
N Bar Primrose 2424
#Twin Valley Precision E161 [NHC-AMF-RDF]
GK Betsy Bardolena 323A

#GAR Precision 1680 [AMC-NHC]
+A Cross Racquel A507 [NHC-AMF]
+OSU 6079 Racquel 8176

#Tehama Bando 155 [AMF-NHF]
9J9 GAR 856 [NHF]
#N Bar Emulation EXT [AMF-NHF]
+DF Empress 6079

BW EPD	WW EPD	YW EPD	MILK EPD	MRB EPD	RE EPD	\$W	\$F	\$G	\$B
-1.0	+41	+79	+20	+29	+31	+26.97	+21.82	+25.28	+47.70

Outstanding two-year-old Double Take daughter! Attractive profile, well made and a beautiful udder describes this female. Her dam traces back to the Raquel/Empress family that has done so well in the Oklahoma State program. Nice EPD spread in this female, ranking her in the top 3% of the breed for BW, top 10% for RE and top 15% for \$B.

• Bred AI 4/06/2010 to OSU Currency 8173.

Lot 46A Bull calf born 1/01/2010, tattoo A0026, by SAV Bismarck 5682. BW 90 lbs.



Lot 47
A Cross Equal
Queen A851

MCS

47

A Cross Equal Queen A851

CALVED: 3/06/2008 • COW: 16128994 • TATTOO: A851

#+EXAR New Look 2971 [AMF-NHF]
+J&J Double Take 550 [AMF-NHF]
+PF E161 Bardolena 3153 [NHF]

#Bon View New Design 1407 [AMF-NHF]
N Bar Primrose 2424
#Twin Valley Precision E161 [NHC-AMF-RDF]
GK Betsy Bardolena 323A

KWF Equator C17L
A Cross Equal Queen A549
KW Eagle Queen 7M

#Papa Equator 2928 [AMF-NHF]
+Leachman Lass 1125
KW 9440 Eagle 8J
KW Trend Queen 11J

BW EPD	WW EPD	YW EPD	MILK EPD	MRB EPD	RE EPD	\$W	\$F	\$G	\$B
+4.9	+37	+75	+18	+26	+06	+15.00	+19.48	+19.53	+42.28

Another well made, long bodied Double Take two year old doing a nice job raising her first calf. Every cow in this pedigree still resides and is working in the A-Cross herd.

• Breeding information available sale day.

Lot 47A Heifer calf born 1/08/2010, tattoo A0048, by Basin Spread 304T. BW 68 lbs.



Lot 48
A Cross
Judy A825

MCS

48

A Cross Judy A825

CALVED: 2/07/2008 • COW: 16128939 • TATTOO: A825

#+EXAR New Look 2971 [AMF-NHF]
+J&J Double Take 550 [AMF-NHF]
+PF E161 Bardolena 3153 [NHF]

#Bon View New Design 1407 [AMF-NHF]
N Bar Primrose 2424
#Twin Valley Precision E161 [NHC-AMF-RDF]
GK Betsy Bardolena 323A

Dalebanks Centennial 2526
HVH Judy 622H 5R
KFF Betsy Judy 622H

#Bon View New Design 878 [AMF-NHF]
#Witch of Dalebanks 9067
GK 306Z Traveler 474C
GK Maid Judy 939X

BW EPD	WW EPD	YW EPD	MILK EPD	MRB EPD	RE EPD	\$W	\$F	\$G	\$B
+0.6	+51	+85	+24	+30	+28	+31.66	+23.87	+23.43	+45.48

This is an easy keeping, deep bodied female that has lots of volume. A825 ranks in the top 15% of the breed for BW and RE, top 10% for WW and top 20% for \$B Value. She herself ratioed 102 for %IMF and 104 for REA.

• Breeding information available sale day.

Lot 48A Heifer calf born 1/26/2010, tattoo A0075, by Basin Spread 304T. BW 78 lbs.

49 HVH Miss Piney 8104 4R

CALVED: 2/02/2005 • COW: 15001740 • TATTOO: 4R

#Bon View New Design 878 [AMF-NHF]
Dalebanks Centennial 2526
#Witch of Dalebanks 9067

#B/R New Design 036 [AMF-NHF]
Bon View Gammer 85
#N Bar Emulation EXT [AMF-NHF]
#Witch of Dalebanks 6011

#N Bar Emulation EXT [AMF-NHF]
OSU EXT Miss Piney 8104
OSU 869A Miss Piney 4128

#Emulation N Bar 5522
N Bar Primrose 2424
OSU Prompter 869A
OSU Lady Piney 736

BW EPD	WW EPD	YW EPD	MILK EPD	MRB EPD	RE EPD	\$W	\$F	\$G	\$B
+1.2	+35	+61	+22	+23	+0.4	+26.36	+7.31	+22.31	+29.90

This young cow has been an excellent producer. Her maternal lineage is full of consistent producers in the OSU herd. Take a look at the outstanding Titlelist heifer at her side!

• Bred AI 4/24/2010 to SAV Bismarck 5682.

Lot **49A** Heifer calf born 1/02/2010, tattoo A0030, by EXAR Titlelist T011. BW 70 lbs.



Lot 52
A Cross
Dixie Erica
A869

50 CR Tilda 7140 [AMF-NHF]

CALVED: 11/01/2007 • COW: 15930824 • TATTOO: 7140

#CA Future Direction 5321 [AMC-NHC]
Basin Franchise P142 [NHC-AMF]
Basin Chloe 812L [AMF-NHF]

#GAR Precision 1680 [AMC-NHC]
CA Miss Power Fix 308 [AMF]
#Gardens Expedition [AMF-NHF]
Basin Chloe 6198

CR Gallatin I030
CR Tilda K136 [AMC]
Rosharon Tilda 935A

+Gallatin
DF Erica 5128
Rosharon PT 533Y
Rosharon Tilda

BW EPD	WW EPD	YW EPD	MILK EPD	MRB EPD	RE EPD	\$W	\$F	\$G	\$B
+1.9	+44	+73	+20	+38	+33	+27.89	+15.05	+27.62	+47.28

We selected this cow as a yearling heifer out of Carol Smith's great herd in Claremore, Oklahoma. 7140 is a very attractive, moderately sized female with a beautiful udder. She ranks in the top 10% of the breed for RE EPD and top 15% for \$B.

• Bred AI 4/05/2010 to Rito 6EM3 of 4L1 Emblazon.

Lot **50A** Heifer calf born 1/01/2010, tattoo A0020, by SAV Bismarck 5682. BW 70 lbs.

52 A Cross Dixie Erica A869

CALVED: 3/20/2008 • COW: +16128953 • TATTOO: A869

Boyd On Target 1083 [AMF-NHF]
Stevenson Moneymaker R185 [AMF-NHF]
#Stevenson Clova Pride L888 [AMF-NHF]

#SAF 598 Bando 5175 [AMF]
+Boyd Forever Lady 7095
VDAR Ambush 2478
Stevenson Clova Pride 712H

EXAR Sudden Impact 1537 [AMF-NHF]
+J&J Dixie Erica 443
Dixie Erica of RR 7530

##Northern Improvement 4480 GF [AMF-NHF]
+BLR Blushing Pride 9097
#E&B 1483 Scotchman 5041
#Dixie Erica of RR 3506

BW EPD	WW EPD	YW EPD	MILK EPD	MRB EPD	RE EPD	\$W	\$F	\$G	\$B
+1.29	+53	+100	+21	+19	+17	+23.94	+38.11	+18.14	+39.77

A thick, big volumed Moneymaker daughter out of our outstanding 443 donor, a daughter of "Bob." A869's three full brothers sold this past fall for an average price of \$4,000. Tremendous maternal lineage in this young two year old. Her WW and YW EPDs rank her in the top 4% and 2% of the breed, respectively. A869 had an individual RE ratio of 103.

• Breeding information available sale day.

Lot **52A** Heifer calf born 2/09/2010, tattoo A0087, by Basin Spread 304T. BW 68 lbs.

51 A Cross Lady A848

CALVED: 3/06/2008 • COW: 16128960 • TATTOO: A848

##EXAR New Look 2971 [AMF-NHF]
+J&J Double Take 550 [AMF-NHF]
+PF E161 Bardolena 3153 [NHF]

#Bon View New Design 1407 [AMF-NHF]
N Bar Primrose 2424
#Twin Valley Precision E161 [NHC-AMF-RDF]
GK Betsy Bardolena 323A

+OSU 6079 Reagan 8173
OSU Lady 0162
OSU Lady Pam 8131

#N Bar Emulation EXT [AMF-NHF]
+DF Empress 6079
+OSU Panama 4178
OSU Miss New Yorker 571

BW EPD	WW EPD	YW EPD	MILK EPD	MRB EPD	RE EPD	\$W	\$F	\$G	\$B
+1.1	+38	+78	+16	+14	+34	+21.96	+21.97	+20.01	+43.35

Another solid Double Take two year old, A848 ranks in the top 10% of the breed for RE and top 20% for \$B.

• Breeding information available sale day.

Lot **51A** Heifer calf born 1/10/2010, tattoo A0049, by Basin Spread 304T. BW 72 lbs.



Basin Spread 304T Sire of some of the spring calves selling

Special thanks to these J&J sale sponsors:

Farm Credit, Enid, Oklahoma

Fred Slater (580) 231-0666

Livestock Nutrition Center

(405) 260-1841

Reproduction Enterprises, Inc.

Les Hutchens (405) 377-8037

Stillwater Milling Company

Rob Bauter (405) 372-2766

Look for their ads inside this catalogue for more information!



Mark & Brenda Johnson, Sydney & Charley
June Jackson
23001 N. Douglas, Orlando, OK 73073
(405) 880-1902, Cell
(580) 455-2256, Home & Fax
info@jandjcattle.com, E-mail
www.jandjcattle.com, Web site

*Please stop by the ranch anytime,
or visit our web site for live videos of the cattle.*



J&J Identity 9075

GCC Osage x J&J Blackcap 5112 (Lot 13)

His flushmates sell as Lots 13A-13B; dam sells as Lot 13.

Co-owned with Jeff Mafi and Chapman Angus Ranch.

Semen packages available. . . .

Contact Mark Johnson (405) 880-1902;

Jeff Mafi (405) 269-6387; or

Darrell Chapman (405) 740-3586



J&J Double Take 550

New Look x PF E161 Bardolena 3153

His daughters and flush sister sell!

Co-owned with A-Cross Ranch.

Semen available—volume discounts.

Contact Mark Johnson (405) 880-1902; or

Cindy Pribil (405) 853-6544

Donation Lot

A.J. Smith Memorial Scholarship Donation



This commercial Hereford heifer is being offered to benefit the A.J. Smith Memorial Scholarship fund at Oklahoma State University. All proceeds above the market value will be donated by the Mark Johnson Family to the A.J. Smith Endowed Scholarship. For details on how you can contribute directly to the fund, contact Lisa Bryant in the OSU Animal Science Department, (405) 744-7442.



A.J. Smith pictured at the 2006 J&J sale

CATTELMEN ACROSS THE COUNTRY LOST A DEAR FRIEND AND INDUSTRY ICON WITH THE PASSING OF A.J. SMITH IN 2009

Our dear friend A.J. Smith served as editor of the Oklahoma Cattlemen's Association's official magazine, *The Cowman*, for 24 years. He fought valiantly against cancer but collapsed during the annual OCA meeting in July 2009 and died shortly thereafter.

Smith worked tirelessly to provide opportunities for youth. He served as president of the Southwest American Livestock Foundation. He was named the Oklahoma Youth Expo show honoree for his efforts and received many other honors, including the OSU Animal Science Graduate of Distinction award.

The A.J. Smith Memorial Scholarship will continue his legacy by helping students who are pursuing a career in livestock publishing, representation or sales management.

If you would like to join us at J&J in the support of this scholarship fund, please make checks payable to the OSU Foundation.

Contributions may be sent to:

OSU Foundation

Attn: A.J. Smith Endowed
Scholarship

P.O. Box 1749

Stillwater, OK 74076-1749

Give online now at:
OSUgiving.com

*Thank you for your interest in the
J&J Cattle Company Dispersal.
We appreciate your support!*



First Class Mail
TIME-DATED: PLEASE DO NOT DELAY

FIRST CLASS
U.S. POSTAGE
PAID
PERMIT #1541
OKLA. CITY,
OKLAHOMA

23001 N. Douglas
Orlando, OK 73073
www.jandjcattle.com

*Powerfully made.
Performance rich.
Pedigree proven.*



J&J CATTLE COMPANY • A-CROSS RANCH • BLACK GOLD ANGUS

May 21 & 22, 2010



- 128 Head
- 2 Pregnancies
- 37 Embryos
- 113 Units of Semen

- *Angus & SimAngus Genetics*
- *Entire offering AM & NH Free*
- *Excellent heifer prospects for the National Junior Angus Show*