

J&J Cattle Co. Dispersal



May 21 & 22, 2010

Fellow Cattlemen:

Thank you for your interest in J&J Cattle Company genetics. I am saddened to report that my friend and J&J partner, Ken Jackson, passed away suddenly April 2, 2010. To settle his estate, the previously scheduled May 21 and 22 J&J Annual Sale will now include the complete and total dispersal of all jointly owned J&J cattle. All donors, ET calves, embryos and semen will sell. Nothing will be held back, making this a unique opportunity to acquire the heart of the J&J program. Over 125 live lots will sell—more than twice the size of our normal sale offerings.

Our sale book and live videos will be available soon. I look forward to hearing from you!

Mark
Mark Johnson

Featuring the most powerful J&J donor dams!



J&J Queen 414
She & her embryos sell
Sire:
Northern Improvement
MGS: A&B Yukon

BW	WW	YW	Milk	Marb	RE	\$B
+2.6	+43	+84	+15	+12	-.27	+37.30



WLTR Renegade 40U ET (son of 414)
2010 NWSS Reserve Grand Champion
Percentage Simmental Bull
... 39U and 40U are owned by Walter Cattle Co. and Gilbert Cattle Co.



WLTR Lydia 39U ET (daughter of 414)
Reserve National Champion
Percentage Simmental Female



J&J Queen 6119 (maternal sister to 414)
Champion Angus Heifer, 2007 Tulsa
State Fair Junior Show. Purchased by
Macy Griswold in the 2007 J&J Sale.

J&J CATTLE CO. *Powerfully made ... Performance rich ... Pedigree proven ...*

We look forward to seeing you at the

J&J DISPERSAL

May 21 & 22, 2010

FRIDAY, MAY 21

1 p.m. until dark
Cattle on display
Food & beverage available
5:30 p.m.
Dinner
7:30 p.m.
Embryo & Semen Auction

SATURDAY, MAY 22

7:30 a.m.
Coffee, juice & pastries
9 a.m.
Cattle on display
11 a.m.
Lunch served
12 Noon
J&J Cattle Co. Dispersal

*Selling registered Angus spring pairs, fall pairs,
fall-born heifer calves, spring yearlings and
pregnancies plus embryos from our ET program!
... At the ranch near Orlando, Oklahoma.*



J&J Queen 9064 *She sells!*
9/02/09 • Sire: Raven • MGS: BR Midland

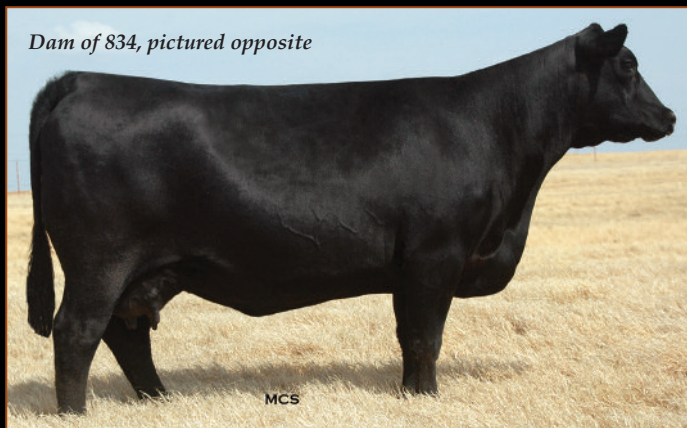
Dam of 9039, pictured opposite



J&J Bardolena 530 [NHF] *She sells!*
Sire: EXAR New Look • MGS: E161

BW	WW	YW	Milk	Marb	RE	\$B
+1.9	+49	+91	+21	+39	+53	+51.44

Dam of 834, pictured opposite



SydGen Mabel 5003 *She sells!*
Sire: SAF Directive • MGS: Shady Brook Encore

BW	WW	YW	Milk	Marb	RE	\$B
+1.6	+53	+91	+29	+12	-.05	+31.17

J&J CATTLE CO.

Mark & Brenda Johnson
June Jackson
23001 N. Douglas, Orlando, OK 73073
(405) 880-1902, Cell
(580) 455-2256, Home / Fax
info@jandjcattle.com, E-mail
www.jandjcattle.com, Web site

View sale book online at: www.jandjcattle.com

LiveAuctions.TV



J&J Identity 9075

9/08/09 • Sire: GCC Osage • MGS: BR Midland

His flush brother and sister plus their dam sell May 22!

Daughter of 530, pictured opposite



A Cross Raquel A834
[AMF-NHF]

Sells with her January bull calf by Bismarck

Sire: J&J Double Take
MGS: Precision

BW	WW	YW	Milk	Marb	RE	\$B
-1.0	+41	+79	+20	+29	+31	+47.70

J&J Bardolena 9039 She sells

2/25/09 • Sire: EXAR Titlelist • MGS: EXAR New Look

BW	WW	YW	Milk	Marb	RE	\$B
+1.7	+49	+91	+21	+61	+35	+52.15

Daughter of 5003, pictured opposite



A Cross Equal Queen A851

Sells with her January heifer calf by Basin Spread

Sire: J&J Double Take
MGS: KWF Equator

BW	WW	YW	Milk	Marb	RE	\$B
+4.9	+37	+75	+18	+26	+05	+42.15

J&J Mabel 834

She sells with her March heifer calf by GCC Osage

2/07/08 • Sire: J&J Double Take • MGS: SAF Directive

BW	WW	YW	Milk	Marb	RE	\$B
+0.2	+56	+97	+24	+31	+18	+46.42



A Cross Judy A825

Sells with her January heifer calf by Basin Spread

Sire: J&J Double Take
MGS: Centennial

BW	WW	YW	Milk	Marb	RE	\$B
+0.6	+51	+85	+24	+30	+28	+45.48



J&J OT26 Rita 48T [AMF-NHF]

Selling 1/2 interest in this feature donor and top selling lot from our 2009 sale! Owned with A-Cross.

Sire: SS Objective T510 OT26 • MGS: 1407

BW	WW	YW	Milk	Marb	RE	\$B
+1.3	+57	+106	+27	+68	+34	+59.33

Featuring guest consignments from:

A-CROSS RANCH

Elk City, OK — LaRue Switzer, Owner
Cindy Pribil (405) 853-5232

Lucas Reinhart (405) 714-2118

BLACK GOLD ANGUS

Centeron, AR — John Freeman (479) 366-3409

Sale Managers:



P.O. Box 170, Elgin, OK 73538
(580) 492-4590 • Fax 492-4994
Eddie Sims, Cell (580) 595-1926
simscs@aol.com
www.nationalcattle.com

(405) 840-5461 Office
(405) 641-6081 Cell
Edmond, OK
matt@mcsauction.com
www.mcsauction.com



23001 N. Douglas
Orlando, OK 73073
(405) 880-1902

First Class Mail
TIME-DATED: PLEASE DO NOT DELAY

Prsrt
First Class
U.S. Postage
PAID
St. Joseph, MO
Permit No. 2017

J&J Cattle Company Dispersal

Friday, May 21 & Saturday, May 22, 2010
Orlando, Oklahoma

**DONOR DAMS WITH THEIR PROGENY AND EMBRYOS • SEMEN • SHOW AND DONOR PROSPECTS
SPRING COW/CALF PAIRS • BRED HEIFERS • HERD SIRE PROSPECTS**

- *The best set of fall-born show prospects we've ever offered!*
- Video of sale cattle will be available at www.jandjcattle.com early May (DVDs sent upon request).
- Heifers selling will be eligible for the National Junior Angus Show.
- Spring pairs with calves by Currency, GCC Osage, Traveler 044, Bismarck, Titlelist and Spread. . . . Several of the spring pairs will have halfblood Simmental calves at side by High Roller.
- Entire offering is AM and NH Free.