

New Date!

52 ANGUS LOTS

AM FREE



Spring Production Sale

Saturday, May 30, 2009
12 Noon • Orlando, Oklahoma

*Fourth Annual
Spring Sale*

Online bidding at
www.liveauctions.tv

*Friday Night
Embryo Auction*

Superior EPDs

*Fancy Show Heifer
Prospects*

78 Live Cattle Sell

Outcross Genetics

*Tremendous Spring
Cow/Calf Pairs*

**POWERFUL YEARLING
BRED HEIFERS**

Show Steer Prospect

Heifer Calf Pregnancy

NH FREE



Welcome!



Mark & Brenda Johnson, Sydney & Charley
Ken & June Jackson
23001 N. Douglas, Orlando, OK 73073
(405) 880-1902, Cell
(580) 455-2256, Home & Fax
info@jandjcattle.com, E-mail
www.jandjcattle.com, Web site



Mark Johnson

Ken Jackson

Dear Friends:

We take this opportunity to say thanks to each of you for taking the time to look through our sale book and to personally invite you to join us on Saturday, May 30, 2009 for our fourth spring production sale. We have moved back a couple of weeks this year to a new date and are hopeful this new time better fits your schedule. It is important to note that we are still ahead of the ownership deadline for junior ownership of heifers to be exhibited at the National Junior Angus Show.

This sale features the strongest set of spring-calving pairs we have ever offered, and most of these cows will have been bred back by sale time to either OSU Currency or SAV Bismarck. As we transition to a fall-calving program, we are selling most of our spring-calving cows, and the quality is exceptional in this group. As always, we have a strong set of yearling heifers which will be AI bred to Currency, Bismarck, Prime Star, Northern Improvement or Nationwide. Up-to-date breeding information will be available on a supplement sheet by sale day on all breeding-age females. The fall-born heifers are an outstanding group representing outstanding show prospects, some of the Angus breed's most famous cow families and some of the most unique pedigrees you will find. All breeding animals in this sale with ancestors that carry Neuropathic Hydrocephalus (NH) or Arthrogyriposis Multiplex (AM) have been tested and found free of those recessive genes with the exception of seven spring 2009-born calves, whose results are pending and will be available sale day.

Over the past year we have continued to be blessed, and there are many people deserving of thanks for helping put this sale offering together. We thank our neighbors for their continued support and the assistance they give. Thanks also to our partners and guest consignors, John Freeman and the A-Cross Ranch crew, LaRue, Cindy and Lucas. Thanks to Matt and Eddie for their expertise, good humor and professionalism. Special thanks to our families for their love, support and sharing our passion for this business. To Dodge Nichols, who is helping with his fourth (and possibly last) J&J sale—congrats on graduation, and thanks for treating these cattle like they were your own. As always, thanks to each of you, our customers . . . you are what make J&J possible, and we appreciate your continued support.

We welcome you to visit J&J at your convenience. The cattle are all here close to the sale barn and easy to look through. We look forward to seeing you on the 30th, if not before.

Sincerely,

Mark
Mark Johnson

Ken
Ken Jackson

Sale Day Phones

Mark Johnson cell (405) 880-1902

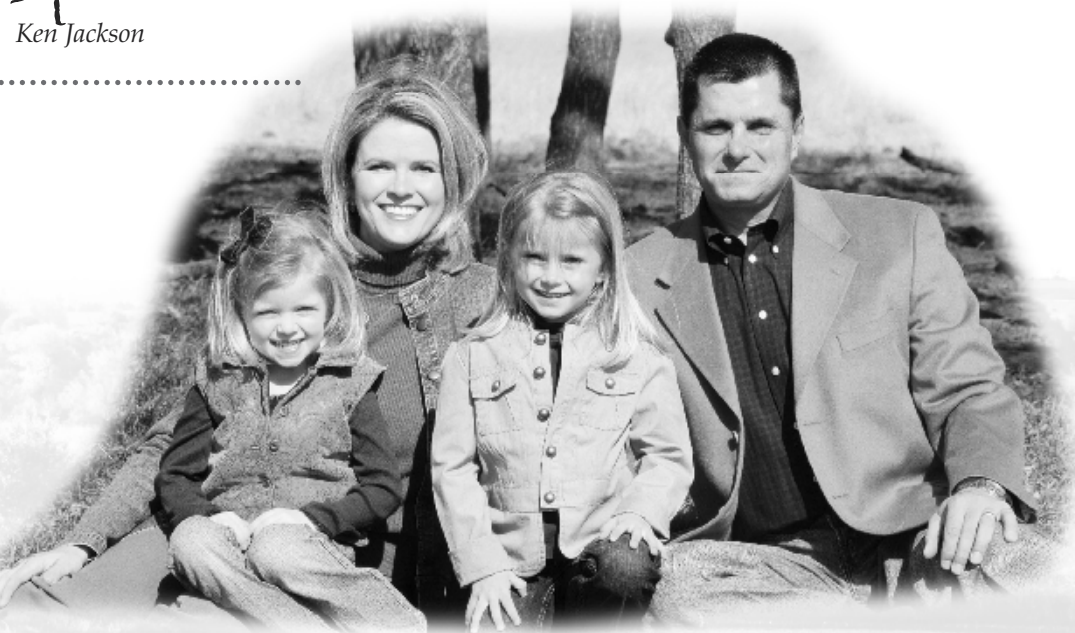
Matt Sims cell (405) 641-6081

Eddie Sims cell (580) 595-1626



The Mark Johnson Family

From left: Charley, Brenda,
Sydney and Mark





Fourth Annual

Spring Production Sale

Saturday, May 30, 2009

12 Noon • Orlando, Oklahoma

At J&J Cattle Company, located on the south side of State Highway 51, just 1-1/2 miles west of Interstate 35 (Exit 174). Look for our signs and the red barn on top of the hill.

Recommended Hotels

- Sleep Inn & Suites, 414 Heather Road, Guthrie, OK, (405) 260-1400.
- Easy access from I-35 Exit 157, approximately 17 miles south of the ranch.
- Quality Inn, 2515 West 6th Avenue, Stillwater, OK, (405) 372-0800.
- Approximately 17 miles east of the ranch on Hwy. 51.

Air Transportation

Will Rogers World Airport in Oklahoma City is 45 minutes from the ranch and is served by most major airlines. For assistance with travel arrangements, please call Brenda Johnson, (405) 880-5887.

Special Sale Guests

- Scott Dewald, Exec. Vice President, Oklahoma Cattlemen's Assn.
- Jarold Callahan, Director, American Angus Assn.
- Bill Majors, Vice President, Oklahoma Angus Assn.
- Dr. Robert Whitson, Vice President, Dean and Director, OSU College of Agricultural Sciences and Natural Resources
- Dr. Ron Kensingler, Head, OSU Department of Animal Science
- Drs. Robert Totusek & Donald Wagner, Heads Emeritus, OSU Department of Animal Science

Sale Managers



(405) 840-5461 Office
 (405) 641-6081 Cell
 (405) 370-7461 Fax
 1019 Waterwood Pkwy, Unit D
 Edmond, OK 73034
 E-mail: mattcsims@aol.com
 www.mcsauction.com

Sale Staff

- Eddie C. Sims, Auctioneer, (580) 595-1626
- Matt Caldwell, *Angus Journal*, (785) 228-1364
- A. J. Smith, *Oklahoma Cowman*, (405) 235-4391; (405) 641-5721
- Chisolm Kinder, *Oklahoma Cowman*, (405) 747-4683
- Doug Paul, *The Stock Exchange*, (405) 820-3982
- John Andras, *Weekly Livestock Reporter*, (817) 789-7352
- Juston Stelzer, Special Assignment, (817) 992-7059

Sale Consultants

- Will Walther, (405) 612-7554
- Dan May, (405) 880-1309
- Jeff Mafi, (405) 269-6387
- Cindy Pribil, (405) 853-5232

Acknowledgements

- Sale Photography—Matt Sims, (405) 641-6081
- Sale Advertising—The Cowboy Connection, (580) 332-7480
- Sale Catalog—Southwest TypeStyles, (405) 381-3591

FRIDAY, MAY 29

- 1 p.m. til dark Cattle on display
Food and beverages available
- 5:30 p.m. Dinner
- 7:30 p.m. **Embryo Auction**

SATURDAY, MAY 30

- 7:30 a.m. Coffee, juice and pastries
- 9:00 a.m. Cattle on display
- 11:00 a.m. Lunch
- 12:00 noon **J&J Production Sale**

SELLING 52 ANGUS LOTS

- Show & Donor Prospects
- Proven Donors
- Pregnancy & Embryos
- Spring Bred Heifers
- Spring Pairs & Bred Cow
- Fall Heifer Calves
- Herd Sire & Show Steer Prospects

Sale Guests

A-CROSS RANCH

- P.O. Box 765, Elk City, OK 73648
- LaRue Switzer, Owner
- Bill Lackey, Commercial Cow Herd
- Lucas Reinhart, Registered Cow Herd
- Cindy Pribil, Herd Consultant
- (405) 853-5232, Cell • (405) 853-6544, Home

BLACK GOLD ANGUS

- 13595 North Mount Olive Road
- Centerton, AR 72719
- John Freeman, Owner
- (479) 366-3409, Cell



Friday Night

EMBRYO AUCTION

May 29, 2009 • 7:30 p.m.



On Friday, cattle will be on display and we will have a pre-sale social that evening, featuring plenty of good food and refreshments. It is always a good time and we hope everyone can attend. This year we have decided to have an embryo auction on Friday night at 7:30 as a part of the evening festivities.

Embryos that will be offered include:

OSU High Roller 8608 × J&J Queen 414 (4 embryos)

GAR Predestined × J&J OT26 Rita 48T (4 embryos) . . . 48T sells Saturday as Lot 1

GAR Predestined × J&J Blanche 764 (4 embryos) . . . 764 sells Saturday as Lot 5

OSU Currency 8173 × Limestone Ever Entense S292 (4 embryos) . . . a pregnancy sells Saturday as Lot 3

OSU Currency 8173 × RR Dixie Erica 4071 (5 embryos) . . . 4071 sells Saturday as Lot 7

EXAR Lutton 1831 × VAR Royal Lass 7125 (4 embryos)

EXAR Titlelist T011 × Three Trees Blackcap 3279 (5 embryos)

BR Midland × PF 1407 Miss Wix 2468 (6 embryos)

Papa Equator 2928 × PF 1407 Miss Wix 2468 (7 embryos)



J&J Queen 414



J&J OT26 Rita 48T



VAR Royal Lass 7125

Absentee Bids

If you would like to place a bid on any lot but will not be able to be with us, you may join us online both Friday evening and Saturday at www.LiveAuctions.tv. You may also direct your phone bid to the owners, the sale manager, sale consultants or any other member of the sale staff.

Livestock Transportation

Livestock haulers believed to be reliable will be available to assist you in shipping your purchases. We recommend that insurance be obtained on lots purchased, which will be available at the clerk's desk.

Sale Terms and Conditions

Cattle will sell under current Suggested Terms and Conditions of the American Angus Association, which can be found at www.angus.org. We reserve the right to withdraw any sale lot not meeting our specifications prior to sale time.

Herd Health

All cattle will be accompanied by proper health certificates for immediate interstate shipment. All calves are wormed and vaccinated with a 7-way Clostridial, 4-way for BVD, IBR, PI3 and BRSV, and Pasteurella Bacterin Toxoid by three months of age and again at weaning. All females of age are officially calthood vaccinated. Yearling heifers and the cow herd are wormed and vaccinated twice annually with a 7-way Clostridial, 4-way for BVD, IBR, PI3 and BRSV, and Lepto/Vibrio with Spirovac®. All cattle selling are up to date on vaccinations and worming.

Breeding Information

The yearling heifers and most of the spring-calving cows will have been bred AI by sale day but are not being sold as safe in calf. An updated breeding report will be available sale day. Announcements made from the auction block will take precedence over all printed material.

All persons who attend the sale do so at their own risk. Neither J&J Cattle Co., the sale managers nor any other person connected with the sale assumes liability, legal or otherwise, for accidents or loss of property.

A

Connealy All Around AMF

CALVED: 1/09/2006 • BULL: 15490811 • TATTOO: 64

#Bon View New Design 208 AMF
Connealy Whitman AMF
14845068
Ella Tina of Conanga 989

#B/R New Design 036 AMF
#Bon View Erica 443
#Tehama Bando 155 AMF
#Ella Lilly of Conanga 5989

#CRA Bextor 872 5205 608 AMF
Entrust of Conanga 894
14845043
Endalla of Conanga 4860

#BAR EXT Traveler 205 AMF
CRA Lady Jaye 608 498 S Easy
#Connealy Dateline
#Enchant Lilly of Conanga

BW EPD	WW EPD	YW EPD	SC EPD	MILK EPD	MARB EPD	REA EPD	
+1.5	+64	+117	+84	+28	+76	+28	
				\$WEAN	\$FEEDLOT	\$GRID	\$BEEF
				+30.58	+51.62	+37.07	+64.57

B

EXAR Titlelist T011 AMF

CALVED: 1/05/2007 • BULL: 15714917 • TATTOO: T011

#Twin Valley Precision E161 AMF
BR Midland AMF
#13898124
BR Royal Lass 7036-19

#GAR Precision 1680 AMC
+WCC Blackcap C9 R
#SAF Neutron AMF
#SAF Royal Lass 7036

EXAR Sudden Impact 1537 AMF
EXG Blackcap R054 R3
15035203
EXG Blackcap N145 R3

##Northern Improvement 4480 GF AMF
+BLR Blushing Pride 9097
+EXAR Anchorage 9479 AMF
R3 SAV Blackcap 0193

BW EPD	WW EPD	YW EPD	SC EPD	MILK EPD	MARB EPD	REA EPD	
+3.0	+56	+101	+57	+20	+48	+42	
				\$WEAN	\$FEEDLOT	\$GRID	\$BEEF
				+25.25	+37.94	+25.76	+51.90

C

BC 7022 Raven 7965 AMF

CALVED: 1/02/2005 • BULL: 15034593 • TATTOO: 7965

OCC Kirby 633K
BC Marathon 7022 AMF
14187839
Gibbet Hill Mignonne E37

##OCC Emblazon 854E
+OCC Blackbird 785H
#Papa Equator 2928 AMF
Gibbet Hill Mignonne TR 29

#OCC Bonanza 880B
OCC Blackbird 796F
12629593
OCC Blackbird 779A

#N Bar Emulation EXT AMF
#Erica Lassie of RR 2373
PJM Montana Power 975
Cole Creek Blackbird 862

BW EPD	WW EPD	YW EPD	SC EPD	MILK EPD	MARB EPD	REA EPD	
+3.4	+46	+82	-64	+22	+27	+72	
				\$WEAN	\$FEEDLOT	\$GRID	\$BEEF
				+24.10	+22.84	+27.46	+47.99

D

GAR Predestined AMF

CALVED: 8/16/1999 • BULL: #13395344 • TATTOO: 5899

#VDAR New Trend 315 AMF
B/R New Design 036 AMF
#11418151
B/R Blackcap Empress 76

#AAR New Trend
#VDAR Lucy 704
#K&K Top Gun
+QLC A70 Blkcp Empress E43T

#N Bar Emulation EXT AMF
GAR EXT 4206
#+12716727
+GAR 6807 Traveler 1432

#Emulation N Bar 5522
N Bar Primrose 2424
#DHD Traveler 6807 AMF
#GAR 9J9 57

BW EPD	WW EPD	YW EPD	SC EPD	MILK EPD	MARB EPD	REA EPD	
+4.3	+53	+99	+27	+29	+99	+69	
				\$WEAN	\$FEEDLOT	\$GRID	\$BEEF
				+33.43	+37.08	+39.11	+72.55

E

Rito 1I2 of 2536 Rito 6I6 AMF

CALVED: 1/07/2001 • BULL: #+13793826 • TATTOO: 112

#DHD Traveler 6807 AMF
Rito 6I6 of 4B20 6807 AMF
#12530601
+Rita 4B20 of 0FB1 Bando

#QAS Traveler 23-4 AMF
#Bemindful Maid DHD 0807
#Tehama Bando 155 AMF
+Rita 0FB1 of 5H11 Fullback

#GAR Precision 1680 AMC
GAR Precision 2536 AMC
12716656
+GAR EXT 2104

#Tehama Bando 155 AMF
9J9 GAR 856
#N Bar Emulation EXT AMF
#GAR Scotch Cap 867

BW EPD	WW EPD	YW EPD	SC EPD	MILK EPD	MARB EPD	REA EPD	
+2.3	+65	+113	-45	+23	+63	-22	
				\$WEAN	\$FEEDLOT	\$GRID	\$BEEF
				+34.34	+46.89	+28.18	+55.02

F

EXAR New Look 2971 AMF

CALVED: 8/12/2002 • BULL: +14230122 • TATTOO: 2971

#B/R New Design 036 AMF
Bon View New Design 1407 AMF
#12783540
Bon View Pride 664

#VDAR New Trend 315 AMF
B/R Blackcap Empress 76
#+GAR Sleep Easy 1009 AMF
#Bon View Pride 1551

#Emulation 31 FX
N Bar Primrose 2424
10474919
Primrose N Bar 9962

FCR Elation Lad 652
Miss Emulous 243
Lad 118K of JRS
#N Bar Primrose 5329

BW EPD	WW EPD	YW EPD	SC EPD	MILK EPD	MARB EPD	REA EPD	
+2.8	+48	+96	+32	+23	+27	+40	
				\$WEAN	\$FEEDLOT	\$GRID	\$BEEF
				+24.41	+35.99	+24.36	+49.07

G

BT Crossover 758N AMC

CALVED: 3/14/2003 • BULL: +14509685 • TATTOO: 758N

#GAR Precision 1680 AMC
CA Future Direction 5321 AMC
#12493607
CA Miss Power Fix 308 AMF

#Tehama Bando 155 AMF
9J9 GAR 856
#+SAF Power Fix AMF
CA Lady Eight 1015

##OSU 6T6 Ultra
BT Royal Pride 237G
12917705
BT Royal Pride 326A

#SS Traveler 6T6 AMF
+DF Empress 6079
#+Brost Power Drive
Beartooth Pride 34Y

BW EPD	WW EPD	YW EPD	SC EPD	MILK EPD	MARB EPD	REA EPD	
+0.9	+56	+107	-44	+30	+62	+50	
				\$WEAN	\$FEEDLOT	\$GRID	\$BEEF
				+33.47	+44.22	+35.26	+67.51

H

Basin Spread 304T AMF

CALVED: 2/09/2007 • BULL: 15690358 • TATTOO: 304T

#Gardens Expedition AMF
Basin Expedition 76J
13288898
Basin Primrose Lady 5287

#N Bar Emulation EXT AMF
Green Garden Gina 2268 S2
#Basin Ambush 3905 AMF
Basin Primrose Lady 296E

#CA Future Direction 5321 AMC
Basin Lucy 3829 AMF
+14401027
Basin Lucy 178E

#GAR Precision 1680 AMC
CA Miss Power Fix 308 AMF
#Basin Max 602C AMF
#Basin Lucy 855A

BW EPD	WW EPD	YW EPD	SC EPD	MILK EPD	MARB EPD	REA EPD	
+1.2	+58	+105	+76	+23	+36	+36	
				\$WEAN	\$FEEDLOT	\$GRID	\$BEEF
				+31.59	+41.29	+20.45	+50.32

I

J&J Double Take 550 AMF

CALVED: 3/02/2005 • BULL: +15132206 • TATTOO: 550

#Bon View New Design 1407 AMF
EXAR New Look 2971 AMF
+14230122
N Bar Primrose 2424

#B/R New Design 036 AMF
Bon View Pride 664
#Emulation 31 FX
Primrose N Bar 9962

#Twin Valley Precision E161 AMF
PF E161 Bardolena 3153
+14428533
GK Betsy Bardolena 323A

#GAR Precision 1680 AMC
+WCC Blackcap C9 R
Bardolene of Peak Dot 204R
SPA Primeline Princess C401

BW EPD	WW EPD	YW EPD	SC EPD	MILK EPD	MARB EPD	REA EPD	
-1.1	+56	+104	+66	+21	+31	+37	
				\$WEAN	\$FEEDLOT	\$GRID	\$BEEF
				+30.16	+41.06	+21.70	+52.65

J

J&J Future Direction 7118 AMC

CALVED: 3/25/2007 • BULL: +15858555 • TATTOO: 7118

#GAR Precision 1680 AMC
CA Future Direction 5321 AMC
#12493607
CA Miss Power Fix 308 AMF

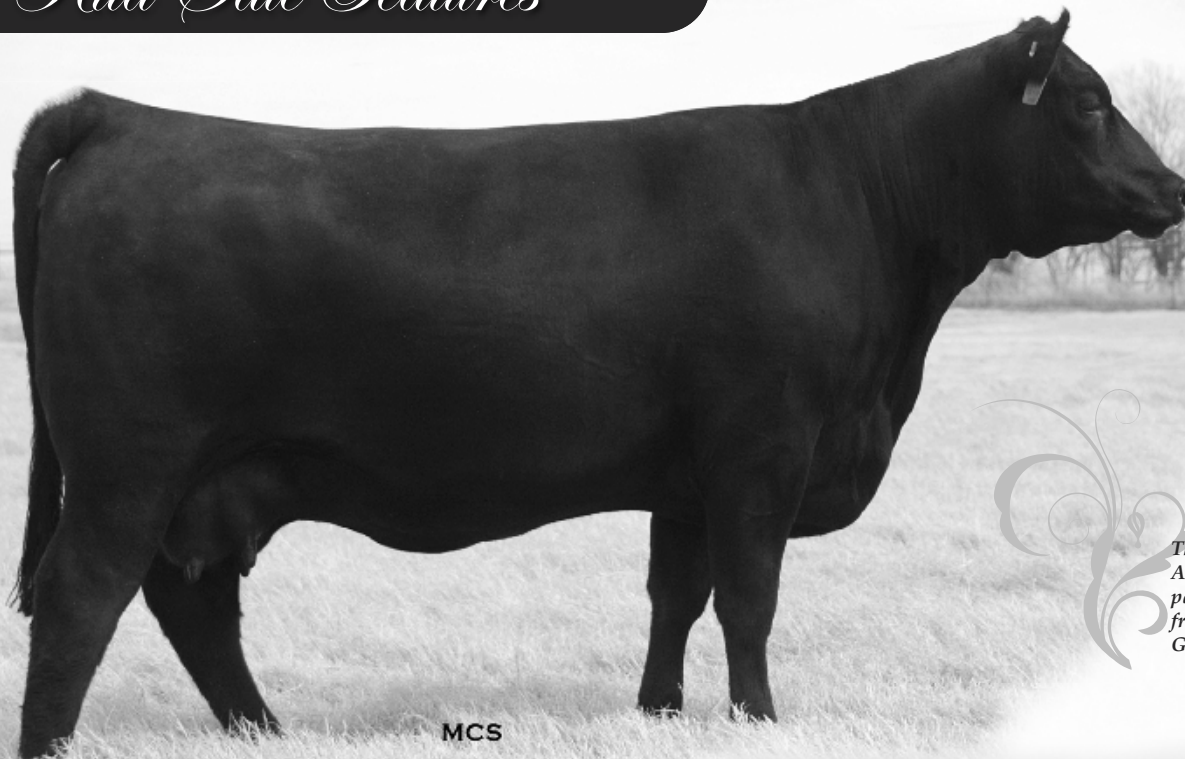
#Tehama Bando 155 AMF
9J9 GAR 856
#+SAF Power Fix AMF
CA Lady Eight 1015

##A&B Yukon 7150 AMF
J&J Queenie 9206
+13412890
C&C Queen 418

#Krugerrand of Donamere 490
+A&B Queen 4173
Bando of Conanga 573
WK Queen 2147

BW EPD	WW EPD	YW EPD	SC EPD	MILK EPD	MARB EPD	REA EPD	
+3.3	+45	+86	+19	+19	+48	+21	
				\$WEAN	\$FEEDLOT	\$GRID	\$BEEF
				+21.28	+27.12	+26.56	+55.16

Rita Sale Features



MCS

The Friday Night Embryo Auction will include a package of five embryos from 48T sired by GAR Predestined.

Lot 1 J&J OT26 Rita 48T

Right for the times and poised for the future, this stylish and powerful two year old uniquely combines pedigree, individual performance and visual quality. 48T descends from breed icons Rita 5H11 and Scotch Cap 309. Her long list of high income producing female ancestors includes her dam, GAR 1407 New Design 353, the high selling female of the record-setting 2007 Eagle Ranch dispersion, who herself is a full sister-in-blood to GAR 1407 New Design 982, who sold for \$100,000 as a featured donor in the 2006 record-setting sale at EXAR.

48T offers tremendous base width, rib, udder quality and an extremely correct structural base. Ranking well into the top 1% of current dams for \$B Index, this female scanned with over 7% IMF with only .22 inch rib fat as a yearling and posted a ratio of 101 for REA. 48T is a tremendous breeding piece that ties curve-bending calving ease and growth genetics with a Marbling predictor that ranks in the breed's best 2% and a REA EPD in the best 3%.



MCS

Lot 1B J&J 1083 Rita 49T

1 J&J OT26 Rita 48T AMF

CALVED: 2/20/2007 • COW: +15752780 • TATTOO: 48T

#SS Traveler 6807 T510 AMF	#DHD Traveler 6807 AMF
SS Objective T510 OT26 AMF	#SS Miss Hi Spade A114
#13776378	SS Rito Rito R76 R011
SS Miss Rita R011 7R8	SS Miss Ultress U56
#Bon View New Design 1407 AMF	#B/R New Design 036 AMF
+GAR 1407 New Design 353 AMC	Bon View Pride 664
+14506144	+GAR Precision 1680 AMC
+GAR Precision 949	+GAR EXT 704 AMF

BW EPD	WW EPD	YW EPD	SC EPD	MILK EPD	MARB EPD	REA EPD
+1.2	+58	+109	+1.10	+27	+.68	+.41

- Tested free for both AM and NH.
- Calm disposition.
- Doing a tremendous job raising her first natural calf, a March heifer by J&J Future Direction 7118 which we are retaining. See this heifer sale day.
- Flushed once, producing 22 grade one embryos.
- Selling half interest with the right to double and take all. J&J reserves the right to one future flush or four pregnancies at our expense and the buyer's convenience if the buyer takes all.

Lot 1A Selling a package of five frozen embryos by GAR Predestined.

1B J&J 1083 Rita 49T AMF

CALVED: 2/20/2007 • COW: +15752781 • TATTOO: 49T

#+SAF 598 Bando 5175	#Bon View Bando 598 AMF
Boyd On Target 1083 AMF	+SAF Royal Lass 1002
13828202	#DHD Traveler 6807 AMF
+Boyd Forever Lady 7095	SVF Forever Lady 57D
#Bon View New Design 1407 AMF	#B/R New Design 036 AMF
+GAR 1407 New Design 353 AMC	Bon View Pride 664
+14506144	+GAR Precision 1680 AMC
+GAR Precision 949	+GAR EXT 704 AMF

BW EPD	WW EPD	YW EPD	SC EPD	MILK EPD	MARB EPD	REA EPD
+2.2	+49	+100	+1.55	+24	+.49	+.16

Descending from the same powerful cow family, this maternal sister to Lot 1 scanned with over 7.61% IMF, .30 inch rib fat and an 11.0 square inch eye at a weight of 828 as a yearling. This female combines visual quality and a quiet disposition. 49T is moderate in frame, deep and doing a tremendous job with her first natural calf by All Around. This On Target daughter offers tremendous "genetic lead" for growth and carcass genetics, combining a low Birth EPD of +2.2 with a YW EPD in the breed's best 2% and a Marbling EPD in the best 10% of current dams.

Lot 1C Bull calf born 2/12/2009, tattoo 9017, by Connealy All Around. BW 79 lbs.



Lot 2 SydGen Mabel 5003

MCS

2

SydGen Mabel 5003

CALVED: 1/01/2005 • COW: 14980052 • TATTOO: 5003

SAF Directive AMF
#13574137

#Millcreek Diversity AMF
+SAF Royal Queen 5084

+Shady Brook Encore 36H
Mabel of Rollin Rock 0665
#13595600

Mabel of Rollin Rock 6429

#+GAR Sleep Easy 1009 AMF
Millcreek Travel Lass
#Bon View Bando 598 AMF
SAF Royal Queen 9022

#RR Scotchcap 9440 AMF
Sitz Everelda Entense 1137
#Lukens 711 Buster 3163
Mabel of Rollin Rock 8249

BW EPD	WW EPD	YW EPD	SC EPD	MILK EPD	MARB EPD	REA EPD
+1.7	+52	+90	+1.69	+27	+0.07	-0.02

What do productive, reproductive-ly efficient, sound, heavy milking, "model type" four-year-old Angus females look like? Check out 5003.

\$WEAN	\$FEEDLOT	\$GRID	\$BEEF
+30.48	+28.39	+1.87	+27.55

She has been a favorite of ours and visitors since she arrived here at J&J. Her tremendous look and eye appeal are backed by a solid foundation cow family from Rollin Rock and loaded with curve-bending additive genetic merit, evidenced by progeny ratios of 109 at weaning and 107 at yearling. 5003 ranks in the best 4% for WW EPD and the best 10% of active dams for YW EPD.

- A genuine foundation female whose influence will be significant at J&J for years to come! She is the mother of our best yearling replacement heifer.
- Has the look and power to make exceptional show cattle.
- Flushed once for two grade one embryos.
- Calm disposition.



MCS

EXAR Titlelist T011 Sire of Lots 2A & 7A; Lot 13 service sire

Lot 2A Bull calf born 3/01/2009, tattoo 9043, by EXAR Titlelist T011. BW 78 lbs.



MCS

Lot 3 Donor Dam Limestone Ever Entense S292



Four embryos from the Currency x S292 mating sell in the Friday Night Embryo Auction.



OSU Currency 8173 Sire of Lot 3 pregnancy

3 Currency × S292 Pregnancy

HEIFER CALF DUE: 2/2010 • PROGENY PEDIGREE

OSU Currency 8173 +16049485	Stevenson MoneyMaker R185 AMF +OSU Empress 4123	Boyd On Target 1083 AMF #Stevenson Clova Pride L888 AMF #+Northern Improvement 4480 GF AMF +OSU 2928 Empress 4177
Limestone Ever Entense S292 +15486962	#BR Midland AMF +Shadybrook Ever Entense 491G	#Twin Valley Precision E161 BR Royal Lass 7036-19 #Traveler 124 GDAR Sitz Everelda Entense 1137

BW EPD	WW EPD	YW EPD	SC EPD	MILK EPD	MARB EPD	REA EPD
S: +2.7	+54	+98	+84	+24	S: +.25	+03
D: +2.7	+46	+85	+10	+23	D: +.27	+30

Owned with A-Cross Ranch.
• Selling a guaranteed heifer calf pregnancy due in February.

SWEAN	SFEEDLOT	SGRID	SBEF
S: +26.33	+35.66	+18.33	+44.35
D: +30.09	+25.76	+19.35	+35.32

A heifer calf pregnancy representing two of the breed's most powerful cow families. Limestone Ever Entense S292, the young donor of this pregnancy, is performance rich, pedigree proven and phenotypically impressive. She is a flush sister to the dam of the \$130,000 Lot 1 female from the 2008 record-setting Limestone, LLC sale and a direct daughter of Ever Entense 491G, the one-time record-setting female that produced a \$20,000-valued pregnancy in that same event. Other maternal sisters to 292 include Ever Entense 4038, the \$60,000-valued female also from the 2008 Limestone sale, and Empire Everelda Entense 2171, the mother of Limestone Ever Entense T116, the New Look daughter that was the \$17,000 selection of A-Cross Ranch through the 2008 sale at Limestone.

OSU Currency 8173, the sire of this pregnancy, is the lead bull from the 2009 National Western Reserve Champion Pen of Three Angus Bulls, where two-thirds interest was sold privately for \$37,500. Currently a featured young sire by ABS Global, Currency is considered by many to be the most impressive bull to ever descend from the famed DF Empress 6079 cow family, as he combines a tremendous EPD profile with a robust body type, tremendous body composition and an athletic, sound structural base.

The female produced from this mating will have outcross genetics offering unlimited long-term earning potential!



MCS

Lot 4A J&J Blackcap 8914

Two flush sisters

4A

J&J Blackcap 8914 AMF

CALVED: 10/29/2008 • COW: +16291153 • TATTOO: 8914

BW 72 lbs. Adj. WW 745 lbs.

• Sells open.

4B

J&J Blackcap 8912 AMF

CALVED: 10/23/2008 • COW: +16285851 • TATTOO: 8912

#Rito 616 of 4B20 6807 AMF
Rito 112 of 2536 Rito 616 AMF
#+13793826 GAR Precision 2536 AMC

#DHD Traveler 6807 AMF
+Rita 4B20 of 0FB1 Bando
#GAR Precision 1680 AMC
+GAR EXT 2114

#BR Midland AMF
VAR Precision 3305
+14579171 GAR Precision 706 AMF

#Twin Valley Precision E161 AMF
BR Royal Lass 7036-19
#GAR Precision 1680 AMC
+GAR EXT 2114

BW EPD	WW EPD	YW EPD	SC EPD	MILK EPD	MARB EPD	REA EPD
+1.3	+55	+97	-25	+21	+65	+08

BW 68 lbs. Adj. WW 678 lbs.

• Sells open.

\$WEAN	\$FEEDLOT	\$GRID	\$BEEF
+29.68	+34.24	+31.93	+54.94



MCS

VAR Precision 3305 Donor dam of Lots 4A & 4B

A pair of big ribbed, long, broody donor prospects from the breed's most proven cow family for carcass genetics and \$B value, these flush mate sisters currently rank in the breed's best 10% for Marbling, YW and \$B genetics. VAR Precision 3305, the donor dam of these October heifers, is more than simply the daughter of a famous cow, as she has tremendous individual and progeny production records. As a single contemporary, 3305 scanned with over 8% IMF and had a REA of 11.4 square inches at 922 pounds. Her natural calves have balanced an average birth ratio of 92 with a weaning ratio of 102 and yearling ratio of 101. Offspring evaluated by ultrasound have averaged 111 for IMF and 105 for REA. Among current dams, 3305 ranks in the breed's elite percentiles for Marbling, REA and \$B predictors and has generated over \$125,000 on her first seven daughters sold. The mating represented by 8914 and 8912 doubles up the Blackcap lines, tying full sisters-in-blood 706 and 2536 closely together for a genetic tabulation loaded with additive genetic merit for multi-trait superiority. A pregnancy of this same mating sold for \$12,000 in the 2008 J&J sale to Darrell Chapman.

• Both females are AM and NH free and owned with A-Cross Ranch.



Lot 5 J&J Blanche 764



Four embryos by GAR Predestined sell in the Friday Night Embryo Auction.



Connealy All Around Sire of Lots 1C, 5A, 8A & 9A

5 J&J Blanche 764

CALVED: 3/10/2007 • COW: 15854018 • TATTOO: 764

#N Bar Prime Time D806 AMF #Gardens Prime Time AMF
 Gardens Prime Star AMF N Bar Miss Emulous A404
 14740749 Green Garden Jilt C242 S1 #SS Traveler 6807 T510 AMF
 Green Garden Jilt 9242 S1

#BR Midland AMF #Twin Valley Precision E161 AMF
 J&J Blanche 5113 BR Royal Lass 7036-19
 +15132182 +Leachman Blanche 1218 #Connealy Frontline AMF
 Leachman Blanche 5001

BW EPD	WW EPD	YW EPD	SC EPD	MILK EPD	MARB EPD	REA EPD
+2.0	+41	+85		+20	+.82	+.03

\$WEAN	\$FEEDLOT	\$GRID	\$BEEF
+21.71	+27.66	+37.38	+48.13

Looking for a new source of elite marbling genetics? This young Prime Star daughter descending from the highly productive Leachman Blanche cow family that has produced several past J&J sale features offers a pedigree tabulation free of New Design 036 and ranks in the best 1% of current dams for Marbling EPD. In regard to individual performance, 764 earned a ratio of 122 for yearling IMF with only .30 rib fat and coupled this with a 10.7 square inch REA at 818 pounds. This female is doing an excellent job raising her natural calf by Connealy All Around.

- Flushed once for seven grade one embryos.
- Lot 5A** Heifer calf born 2/14/2009, tattoo 9021, by Connealy All Around. BW 75 lbs.



Lot 6A J&J Queen 890



J&J Queen 414 Maternal sister to Lots 6A-B & Lot 51
... evaluated by many visitors as the most visually impressive cow at J&J

6A

J&J Queen 890

CALVED: 9/13/2008 • COW: +16288236 • TATTOO: 890

BW 73 lbs. Adj. WW 702 lbs.
• Sells open.

6B

J&J Queen 888

CALVED: 9/07/2008 • COW: +16288235 • TATTOO: 888

#SS Traveler 6807 T510 AMF
SS Objective T510 OT26 AMF
#13776378 SS Miss Rita R011 7R8

#DHD Traveler 6807 AMF
#SS Miss Hi Spade A114
SS Rito Rito R76 R011
SS Miss Ultress U56

J&J Queenie 9206
+13412890 #+A&B Yukon 7150 AMF
C&C Queen 418

#Krugerrand of Donamere 490
+A&B Queen 4173
Bando of Conanga 573
WK Queen 2147

BW EPD	WW EPD	YW EPD	SC EPD	MILK EPD	MARB EPD	REA EPD
+3.4	+62	+114	+22	+17	+49	+10

BW 75 lbs. Adj. WW 734 lbs.
• Sells open.

\$WEAN	\$FEEDLOT	\$GRID	\$BEEF
+23.52	+49.21	+27.60	+60.33

A pair of daughters from one of the two highest revenue generating cows at J&J—Queenie 9206. 9206 has established herself as a producer of stout, heavy boned cattle with that “look.” These heifers by the all-around performance sire Objective OT26 have surpassed our expectations. Correct and extremely long, they have shown explosive growth performance after having modest birth weights. These heifers have a calm disposition and should make great junior halter heifers before going to work in production. If you are looking



J&J Queen 6119 Maternal sister to Lots 6A-B & Lot 51
... Selected by Macy Griswold in our 2007 sale, 6119 was later named Grand Champion Angus Heifer at the 2007 Tulsa State Fair Junior Show.

to build a cow herd, check out the “genetic lead” these two heifers have to offer. Ranking well into the highest 1% for weaning and yearling growth and the best 3% for \$B index, they offer EPDs in “proper direction” for Marbling, REA and Fat Thickness. Help yourself to proven genetics that have done a great job for us at J&J!

- Unique outcross pedigree.



MCS



Five embryos from 4071 and sired by OSU Currency sell Friday night

Lot 7 RR Dixie Erica 4071

7

RR Dixie Erica 4071

CALVED: 2/10/2004 • COW: 14774799 • TATTOO: 4071

#Hero 6267 of RR 2418	#RR Hero 6267
HA Image Maker 0415 AMF	RR Everelda Entense 0413
#+13739532	H 96 Rito 2100 7371
HA Rito Blackcap 9038	H 96 Blackcap 3835
+Lukens Forever Future 7000	#DHD Traveler 6807 AMF
RR Dixie Erica 2917	GDAR Forever Lady 7171
14356116	KMA Intense 2162
RR Dixie Erica 5674	KMA Dixie Erica 0153

BW EPD	WW EPD	YW EPD	SC EPD	MILK EPD	MARB EPD	REA EPD
+1.7	+57	+97	+0.02	+34	+0.09	+0.14
\$WEAN	\$FEEDLOT	\$GRID	\$BEEF			
+33.98	+33.46	+15.47	+39.75			

Lot 7A Heifer calf born 2/06/2009, tattoo 9010, by EXAR Titlelist T011. BW 78 lbs.

For those who have followed our program, you will remember past sale catalogues in which I have written about our great appreciation for the highly productive, fertile, sound, low maintenance cows from the Rollin Rock herd in Montana and what a significant factor they have been (and will continue to be) in our program. Over the past three years, 4071 has simply "emerged" as the most productive cow from a group of Rollin Rock females purchased as bred heifers in 2006. There are many key economically important traits in beef production. ... If breeding back quickly, first service AI conception and weaning off calves in excess of 800 pounds are traits of interest to you, I suggest you take a look at this cow. In regard to 4071, I have said several times "If I were to own 1500 cows, I would want them all to be like her."

- 4071 had individual performance ratios of 98 for birth, 105 at weaning and 109 for yearling weight. Her natural calves have posted average ratios of 113 at weaning, 109 for both yearling weight and IMF and 108 for REA.
- Problem-free cow with a unique, outcross pedigree, descending from the famous Dixie Erica family from Rollin Rock.
- The mother of one of our best yearling replacement females and has another outstanding heifer calf at side.
- Flushed once, producing 14 transferable embryos (12 grade one, 2 grade two).

"If I were to own 1500 cows, I would want them all to be like her."

8

J&J Dixie Erica 577

CALVED: 9/13/2005 • COW: 15132219 • TATTOO: 577

BR Midland AMF
#13898124

#Twin Valley Precision E161 AMF
BR Royal Lass 7036-19

#GAR Precision 1680 AMC
+WCC Blackcap C9 R
#SAF Neutron AMF
#SAF Royal Lass 7036

J&J Dixie Erica 227
+14136793

#B/R New Design 323
Dixie Erica of RR 7530

#B/R New Design 036 AMF
B/R Ruby of Tiffany 155
#E&B 1483 Scotchman 5041
#Dixie Erica of RR 3506

BW EPD	WW EPD	YW EPD	SC EPD	MILK EPD	MARB EPD	REA EPD
+1.6	+41	+77	+39	+15	+.59	+.19

Another cow descending from the Dixie Erica family from Rollin

SWEAN	SPEEDLOT	SGRID	\$BEEF
+23.48	+19.91	+35.32	+46.27

Rock and a granddaughter of "Bob" 7530, who has gained fame in Oklahoma as a cornerstone donor for J&J, Ratcliff Ranch and EXAR. 577 earned a 120 IMF ratio as a yearling. She has an outstanding heifer calf at side by Connealy All Around.

Lot 8A Heifer calf born 2/08/2009, tattoo 9011, by Connealy All Around. BW 61 lbs.



Lot 8
J&J Dixie Erica 577

9

Jacs Toreby Queen 7244

CALVED: 2/26/2007 • COW: +15736507 • TATTOO: 7244

BR Midland AMF
#13898124

#Twin Valley Precision E161 AMF
BR Royal Lass 7036-19

#GAR Precision 1680 AMC
+WCC Blackcap C9 R
#SAF Neutron AMF
#SAF Royal Lass 7036

Jacs Toreby Queen 0315
#13607319

##Pine Creek Traveler 124-1107
Jacs Toreby Queen 5539

#Traveler 124 GDAR
Sitz Everelda Entense 1137
#RR 9440 Scotch Cap 1483 AMF
DBCS Toreby Queen B903

BW EPD	WW EPD	YW EPD	SC EPD	MILK EPD	MARB EPD	REA EPD
+1.7	+49	+88	+25	+22	+.58	+14

An attractive Midland daughter from one of the most productive

SWEAN	SPEEDLOT	SGRID	\$BEEF
+27.59	+27.56	+26.68	+44.87

cow families at Jac's Ranch. Great udder structure and teat quality. Scanned with 6.26% IMF with .28 inch rib fat and an 11.1 square inch eye at 850 pounds as a yearling. Her heifer calf at side is a halter prospect!

Lot 9A Heifer calf born 2/19/2009, tattoo 9029, by Connealy All Around. BW 73 lbs.



Lot 9
Jacs Toreby Queen 7244

10

OSU AR Empress 5128

CALVED: 1/28/2005 • COW: 15067309 • TATTOO: 5128

BR Midland AMF
#13898124

#Twin Valley Precision E161 AMF
BR Royal Lass 7036-19

#GAR Precision 1680 AMC
+WCC Blackcap C9 R
#SAF Neutron AMF
#SAF Royal Lass 7036

OSU Empress 3116
+14446750

EXAR Sudden Impact 1537 AMF
+OSU Empress 1111

##Northern Improvement 4480 GF AMF
+BLR Blushing Pride 9097
##RR Bentley 779F
+DF Empress 6079

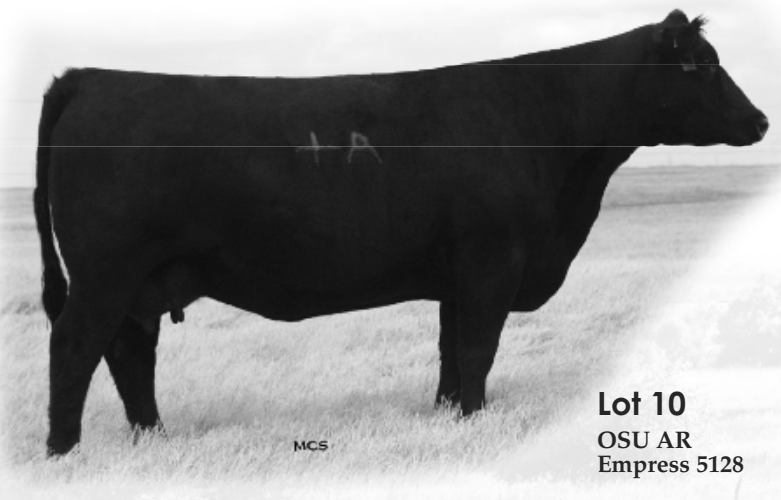
BW EPD	WW EPD	YW EPD	SC EPD	MILK EPD	MARB EPD	REA EPD
+0.9	+46	+89	+27	+16	+.25	+.31

5128 has done a great job in production. Her first natural calf

SWEAN	SPEEDLOT	SGRID	\$BEEF
+24.57	+29.70	+22.19	+43.31

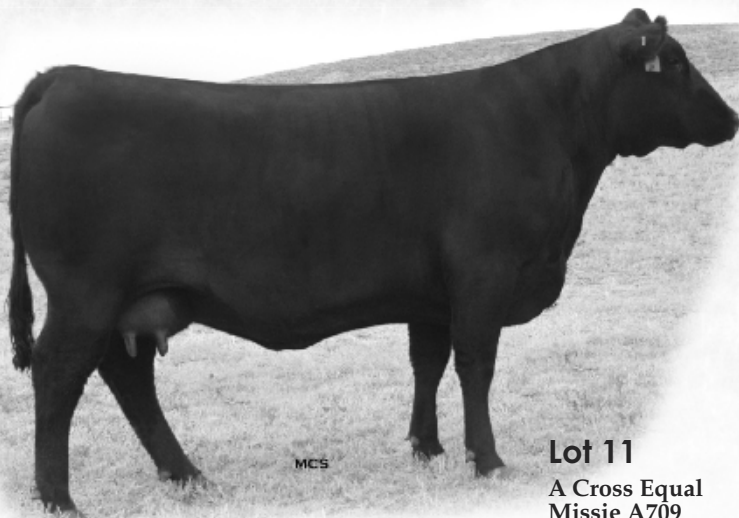
was a feature in last year's sale and sold for \$3,500. Her pedigree tabulation represents the famous DF Empress 6079. This stout daughter of Midland has a powerful heifer calf at side sired by Predestined.

Lot 10A Heifer calf born 2/11/2009, tattoo 9013, by GAR Predestined. BW 91 lbs.



Lot 10
OSU AR Empress 5128

A-Cross Features



Lot 11
A Cross Equal
Missie A709

11 A Cross Equal Missie A709

CALVED: 1/24/2007 • COW: 15840779 • TATTOO: A709

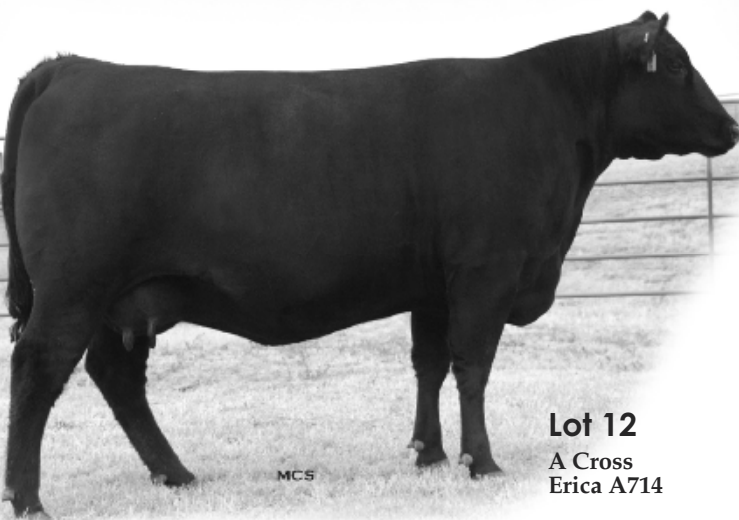
#Bon View New Design 1407 AMF #B/R New Design 036 AMF
EXAR 263C AMF Bon View Pride 664
15012747 EXAR June C 3577 #BR Midland AMF
PAF 9611 616 1161
KW 9440 Eagle 8J #RR Scotchcap 9440 AMF
KW Eagle Missie 6M #AAA New Premier 004
14982013 Suburban Missie 132 +Double HH Power Drive L366
Suburban Missie 110

BW EPD	WW EPD	YW EPD	SC EPD	MILK EPD	MARB EPD	REA EPD
+2.8	+44	+82		+25	+23	+16

A709 is a deep bodied, big ribbed 263C two year old that ranks in the top 15% of Angus dams for Milk EPD, top 20% for YW and top 25% for REA. Offered by A-Cross Ranch.

Lot 11A Heifer calf born 2/21/2009, tattoo A962, by Basin Spread 304T. BW 62 lbs.

\$WEAN	\$FEEDLOT	\$GRID	\$BEEF
+24.19	+23.59	+18.65	+39.10



Lot 12
A Cross
Erica A714

12 A Cross Erica A714

CALVED: 1/29/2007 • COW: 15840803 • TATTOO: A714

#Bon View New Design 1407 AMF #B/R New Design 036 AMF
EXAR 263C AMF Bon View Pride 664
15012747 EXAR June C 3577 #BR Midland AMF
PAF 9611 616 1161
#E&B 1483 Scotchman 5041 #RR 9440 Scotch Cap 1483 AMF
OSU Erica 2126 Lady 183 Traveler 334
14127532 OSU 490 Erica 9135 #Krugerrand of Donamere 490
#OSU 869A Erica 4147

BW EPD	WW EPD	YW EPD	SC EPD	MILK EPD	MARB EPD	REA EPD
+2.3	+49	+93		+21	+37	+47

Another nice 263C two year old that is correctly structured with lots of rib and volume, A714 ranks in the top 2% and 4% of Angus dams for REA EPD and \$B. She also ranks in the top 5% for WW and top 10% for YW. Offered by A-Cross Ranch.

• Bred AI 4/12/2009 to OSU Currency 8173.

Lot 12A Bull calf born 1/30/2009, tattoo A944, by Basin Spread 304T. BW 66 lbs.

\$WEAN	\$FEEDLOT	\$GRID	\$BEEF
+24.59	+32.55	+26.45	+51.92



Lot 13
A Cross Eagle
Lass A725

13 A Cross Eagle Lass A725 AMF

CALVED: 3/01/2007 • COW: 15840778 • TATTOO: A725

+EXAR New Look 2971 AMF #Bon View New Design 1407 AMF
J&J Double Take 550 AMF N Bar Primrose 2424
+15132206 +PF E161 Bardolena 3153 #Twin Valley Precision E161 AMF
GK Betsy Bardolena 323A
KW 9440 Eagle 8J #RR Scotchcap 9440 AMF
KW Eagle Lass 3M AMF #AAA New Premier 004
14982012 +Quail Meadow Lass C92J ##Leachman Prompter AMF
+Leachman Lass 1105

BW EPD	WW EPD	YW EPD	SC EPD	MILK EPD	MARB EPD	REA EPD
+1.6	+46	+89		+21	+24	+08

A725 is a nice Double Take two year old that is doing a fine job with her first calf. She ranks among Angus dams in the top 10% for YW and top 20% for \$B. Offered by A-Cross Ranch.

• Bred AI 4/01/2009 to EXAR Titlelist T011.

Lot 13A Bull calf born 1/15/2009, tattoo A928, by Basin Spread 304T. BW 76 lbs.

\$WEAN	\$FEEDLOT	\$GRID	\$BEEF
+25.13	+29.70	+15.24	40.78

14

J&J Racquel 6120

CALVED: 3/10/2006 • COW: +15507103 • TATTOO: 6120

DHD Traveler 6807 AMF
#10858958

#QAS Traveler 23-4 AMF
#Bemindful Maid DHD 0807

#Band 234 of Ideal 3163
QAS Blackbird Eve 601 1
#PBC 707 1M F0203
Bemindful Maid of RR 1079

OSU 6079 Racquel 8176
+13068513

#N Bar Emulation EXT AMF
+DF Empress 6079

#Emulation N Bar 5522
N Bar Primrose 2424
#Pine Drive Big Sky
KAF Miss Jetliner 641 1B4

BW EPD	WW EPD	YW EPD	SC EPD	MILK EPD	MARB EPD	REA EPD
+1.1	+37	+73	-.45	+20	+1.0	+1.5

A descendant of DF Empress 6079, 6120 offers powerful phenotype and a pedigree with lasting popularity, crossing 6807 on EXT. Her mother, the now-deceased OSU Racquel 8176, was, at the very least, one of the most powerful and productive direct daughters ever produced by the immortal Empress 6079. 8176 offspring averaged 101 at birth, 131 at weaning and 117 for yearling weight, and her first 39 calves evaluated by ultrasound averaged ratios of 107 for IMF and 104 for REA. 6120 has continued this legacy, posting ratios of 107 for IMF and 103 for REA as a yearling. An outcross pedigree to the 036 and 1680 bloodlines with a herd bull prospect at her side.

\$WEAN	\$FEEDLOT	\$GRID	\$BEEF
+24.07	+17.59	+19.05	+29.59

Lot 14A Bull calf born 2/14/2009, tattoo 9020, by GAR Predestined. BW 80 lbs.



Lot 14
J&J Racquel 6120

15

J&J Racquel 824

CALVED: 2/03/2008 • COW: 16233641 • TATTOO: 824

Gardens Prime Star AMF
14740749

#N Bar Prime Time D806 AMF
Green Garden Jilt C242 S1

#Gardens Prime Time AMF
N Bar Miss Emulous A404
#SS Traveler 6807 T510 AMF
Green Garden Jilt 9242 S1

J&J Racquel 6120
+15507103

#DHD Traveler 6807 AMF
+OSU 6079 Racquel 8176

#QAS Traveler 23-4 AMF
#Bemindful Maid DHD 0807
#N Bar Emulation EXT AMF
+DF Empress 6079

BW EPD	WW EPD	YW EPD	SC EPD	MILK EPD	MARB EPD	REA EPD
+1.5	+34	+79		+22	+1.54	+1.14

Moderate framed, deep ribbed and sound footed, this Prime Star daughter is poised to make her mark as a cow. Solid individual performance measures and a pedigree that includes no 036 or 1680. Solid cow prospect!

\$WEAN	\$FEEDLOT	\$GRID	\$BEEF
+19.91	+24.44	+31.98	+36.67

- BW 78 lbs. Adj. WW 639 lbs. Adj. YW 889 lbs. Adj. IMF 4.25%. Adj. REA 11.3 sq. in.
- Breeding information available sale day.



Lot 15
J&J Racquel 824

16

J&J Empress 8127

CALVED: 3/21/2008 • COW: +16168364 • TATTOO: 8127

GAR Predestined AMF
#13395344

#B/R New Design 036 AMF
#+GAR EXT 4206

#VDAR New Trend 315 AMF
B/R Blackcap Empress 76
#N Bar Emulation EXT AMF
+GAR 6807 Traveler 1432

OSU Empress 4172
+14736974

#BR Midland AMF
+OSU Empress 6188

#Twin Valley Precision E161 AMF
BR Royal Lass 7036-19
#+Krugerrands Moneyline
+DF Empress 6079

BW EPD	WW EPD	YW EPD	SC EPD	MILK EPD	MARB EPD	REA EPD
+2.7	+47	+88	+1.02	+21	+1.65	+1.45

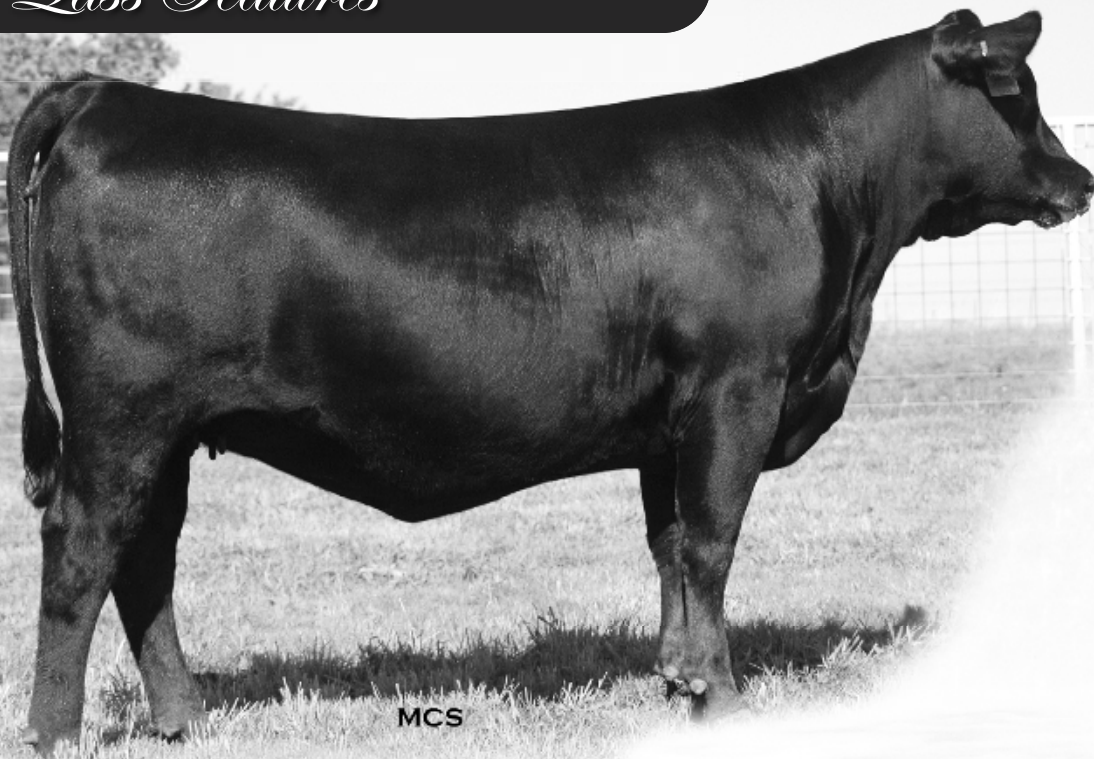
A stout daughter of GAR Predestined, this heifer offers functional look and visual quality backed by strong individual performance. 8127 ranks well into the breed's best 10% of non-parent females in Marbling and REA predictors. Her mother, Empress 4172, is a donor from the A-Cross and J&J ET program who was the high selling sale feature as LaRue Switzer's selection at \$30,000 from the 2005 OSU Cowboy Classic.

\$WEAN	\$FEEDLOT	\$GRID	\$BEEF
+23.88	+28.33	+34.28	+61.23

- BW 85 lbs. Adj. WW 674 lbs. Adj. YW 895 lbs. Adj. IMF 6.07%. Adj. REA 9.2 sq. in.
- Breeding information available sale day.



Lot 16
J&J Empress 8127



Lot 17 J&J Lass 823



Lot 18
Blackjacks
Lass 270R

17 J&J Lass 823

CALVED: 2/03/2008 • COW: 16233640 • TATTOO: 823

Boyd On Target 1083 AMF #+SAF 598 Bando 5175 AMF
 Stevenson Moneymaker R185 AMF +Boyd Forever Lady 7095
 15003238 #Stevenson Clova Pride L888 AMF VDAR Ambush 2478
 Stevenson Clova Pride 712H
 #N Bar Emulation EXT AMF #Emulation N Bar 5522
 Blackjacks Lass 270R N Bar Primrose 2424
 15216220 Summitcrest Lass 062E Summitcrest Alloy Z087
 Summitcrest Lass 151Y

BW EPD	WW EPD	YW EPD	SC EPD	MILK EPD	MARB EPD	REA EPD
+3.5	+55	+98		+21	+25	-10

A tremendous yearling heifer, extremely long, big hipped and attractive fronted. Her sire, Moneymaker R185, has rapidly established himself for the tremendous rib, explosive growth and doing ability he transmits, and this heifer is no exception. A maternal sister to 823, produced by the cow selling as Lot 18, was the second high selling yearling heifer of the 2008 sale at J&J, going to Belle Point Ranch at a value of \$6,000. 823 is produced by a cow with an average nursing ratio of 107 on her first two natural calves. This heifer has the look and stoutness to show and will no doubt follow in her mother's footsteps as a great cow.

- BW 83 lbs. Adj. WW 775 lbs. Adj. YW 951 lbs. Adj. IMF 4.55%. Adj. REA 10.3 sq. in.
- Breeding information available sale day.

18 Blackjacks Lass 270R

CALVED: 3/04/2005 • COW: 15216220 • TATTOO: 270R

#Emulation N Bar 5522 #Emulation 31 FX
 N Bar Emulation EXT AMF Ankony 8F78 Lass 8F275
 #10776479 N Bar Primrose 2424 #Emulation 31 FX
 Primrose N Bar 9962
 Summitcrest Alloy Z087 #Leachman Alloy
 Summitcrest Lass 062E #+Summitcrest Mamie T002
 12411520 #Summitcrest Lass 151Y #Hoff Prototype SC 357
 Summitcrest Lass 204P

BW EPD	WW EPD	YW EPD	SC EPD	MILK EPD	MARB EPD	REA EPD
+3.8	+38	+78	+11	+17	+17	+.04

This cow, purchased as a bred heifer out of the Grissoms' Blackjack Angus herd in Seminole, has distinguished herself as a producer of powerful females. Her first natural calf, by TC Total, was our second high selling yearling in last year's sale, going to the McMahon Family at Belle Point Ranch in Arkansas. This cow is very wet and sports a typical EXT udder. Moderate in stature, feminine fronted and weans off a calf nearly her size each year. 270R scanned with a 116 ratio for marbling as a yearling heifer, and her first two natural calves have weaned at an average ratio of 107.

Lot 18A Heifer calf born 2/16/2009, tattoo 9024, by BT Crossover 758N. BW 75 lbs.

19

J&J 1407 Lass 528

CALVED: 2/19/2005 • COW: 15132186 • TATTOO: 528

#B/R New Design 036 AMF
Bon View New Design 1407 AMF
#12783540 Bon View Pride 664

#VDAR New Trend 315 AMF
B/R Blackcap Empress 76
#+GAR Sleep Easy 1009
#Bon View Pride 1551

+Leachman Full Trend
Leachman Lass 0027
#13567707 #+Leachman Lass 8223

#VDAR New Trend 315 AMF
+Leachman Blackcap 0204
#Sitz Traveler 9929
+Leachman Lass 9205

BW EPD	WW EPD	YW EPD	SC EPD	MILK EPD	MARB EPD	REA EPD
+2.2	+40	+77	+38	+32	+.55	-.10

528 descends from the famous Leachman Lass 1004. She continues to do a solid job in production, now raising her third natural calf, a halter prospect sired by Raven. Her first two natural calves balanced a ratio of 95 for birth weight with 102 for both weaning and yearling weights and ratioed 103 for IMF and 101 for REA when evaluated by ultrasound as yearlings.

SWEAN	SFEEDLOT	SGRID	SBEFF
+24.89	+20.27	+23.52	+31.57

Lot 19A Heifer calf born 2/16/2009, tattoo 9025, by BC 7022 Raven 7965. BW 75 lbs.



Lot 19
J&J 1407 Lass 528

20

RR Everelda Entense 4096

CALVED: 2/12/2004 • COW: 14774805 • TATTOO: 4096

#Bon View New Design 1407 AMF
Sitz New Design 349M AMF
14094252 +Sitz Pride 166K

#B/R New Design 036 AMF
Bon View Pride 664
#Sitz Traveler 8180 AMF
#Sitz Pride 842

+EXAR Kodiak 9470
RR Everelda Entense 2220
+14355913 RR Everelda Entense 0413

##A&B Yukon 7150 AMF
HH Pine Drive 013
#QAS Traveler 23-4 AMF
RR Everelda Entense 8320 TPB

BW EPD	WW EPD	YW EPD	SC EPD	MILK EPD	MARB EPD	REA EPD
-0.4	+50	+93	+19	+30	+.23	+.18

4096 is another "high level of function" cow that descends from Rollin Rock breeding. As an individual, this cow earned a 116 ratio among her contemporaries for yearling REA. In production, her natural calves are averaging 113 at weaning and 111 for yearling weight. A productive, good looking daughter of 349M with a heavy muscled bull calf at side.

SWEAN	SFEEDLOT	SGRID	SBEFF
+31.26	+32.16	+20.64	+39.09

Lot 20A Bull calf born 2/08/2009, tattoo 9012, by BT Crossover 758N. BW 75 lbs.



Lot 20
RR Everelda
Entense 4096

21

CF 1407 Blackbird 2006

CALVED: 1/23/2006 • COW: 15820260 • TATTOO: 2006

#B/R New Design 036 AMF
Bon View New Design 1407 AMF
#12783540 Bon View Pride 664

#VDAR New Trend 315 AMF
B/R Blackcap Empress 76
#+GAR Sleep Easy 1009
#Bon View Pride 1551

#Connealy Lead On AMF
Summitcrest Blackbird P101
14887721 Summitcrest Blackbird M363

#Connealy Leadtime AMF
Eligence Plus of Conanga
#LF New Trend 4100 AMF
#Summitcrest Blackbird J333

BW EPD	WW EPD	YW EPD	SC EPD	MILK EPD	MARB EPD	REA EPD
+1.0	+48	+90		+27	+1.55	+1.23

Nice pair of cattle selling as Lot 21. The Raven heifer at side of 2006 has caught the eye of several visitors. As an individual, 2006 balanced ratios of 93 at birth, 109 at weaning and 104 for yearling weight among her contemporaries at Frey Angus in Orlando, Okla. 2006, with EPDs for YW and Milk in the best 10% of current Angus dams, was our selection out of the 2008 Oklahoma Angus Gathering Sale.

SWEAN	SFEEDLOT	SGRID	SBEFF
+28.12	+29.93	+33.60	+47.82

Lot 21A Heifer calf born 2/16/2009, tattoo 9023, by BC 7022 Raven 7965. BW 78 lbs.

22

J&J Dixie Erica 5127

CALVED: 9/19/2005 • COW: +15352654 • TATTOO: 5127

#Bon View New Design 1407 AMF
EXAR New Look 2971 AMF
+14230122 N Bar Primrose 2424

#B/R New Design 036 AMF
Bon View Pride 664
#Emulation 31 FX
Primrose N Bar 9962

#DHD Traveler 6807 AMF
J&J 6807 Dixie 012
+13730176 Dixie Erica of RR 7530

#QAS Traveler 23-4 AMF
#Bemindful Maid DHD 0807
#E&B 1483 Scotchman 5041
#Dixie Erica of RR 3506

BW EPD	WW EPD	YW EPD	SC EPD	MILK EPD	MARB EPD	REA EPD
+2.3	+41	+85	+18	+18	+.12	+.26

5127 is a flush mate to a past sale feature and one of the high selling lots in the 2007 J&J sale—Dixie Erica 5120, who is now serving as a donor for EXAR and the Allison Family Trust. A flush mate brother was the second high indexing and high selling Angus bull in the 2007 Oklahoma Beef, Inc. sale. Great cow family represented in this big, powerful cow with a stout bull calf at side.

SWEAN	SFEEDLOT	SGRID	SBEFF
+20.55	+27.66	+17.15	+39.26

Lot 22A Bull calf born 2/11/2009, tattoo 9015, by J&J Future Direction 7118. BW 83 lbs.

Spring Pairs & Bred Cow



MCS

Lot 23
J&J Blanche 553

23 J&J Blanche 553

CALVED: 3/15/2005 • COW: 15132183 • TATTOO: 553

#Bon View New Design 1407 AMF #B/R New Design 036 AMF
EXAR New Look 2971 AMF Bon View Pride 664
+14230122 N Bar Primrose 2424 #Emulation 31 FX
Primrose N Bar 9962

#Connealy Frontline AMF #Connealy Dateline
Leachman Blanche 1218 #Pleasant Pill of Conanga
+13874670 Leachman Blanche 5001 #Tehama Bando 155 AMF
Leachman Blanche 3007

BW EPD	WW EPD	YW EPD	SC EPD	MILK EPD	MARB EPD	REA EPD
+2.9	+41	+83	+50	+21	+.25	+.29

This big hipped New Look daughter descends from the same family as the cow selling as Lot 5, Leachman Blanche 5001. 553 has a good looking, heavy muscled bull calf at side by Raven.

SWEAN	SPEEDLOT	SGRID	\$BEEF
+20.69	+25.69	+23.17	+41.84

Lot 23A Bull calf born 2/12/2009, tattoo 9016, by BC 7022 Raven 7965. BW 78 lbs.



MCS

Lot 24
J&J Racquel 636

24 J&J Racquel 636

CALVED: 2/26/2006 • COW: +15507115 • TATTOO: 636

#Bon View New Design 1407 AMF #B/R New Design 036 AMF
GAR Integrity AMF Bon View Pride 664
+14222612 GAR Precision 1019 AMC #GAR Precision 1680 AMC
#+GAR EXT 755 AMF

#N Bar Emulation EXT AMF #Emulation N Bar 5522
OSU 6079 Racquel 8176 N Bar Primrose 2424
+13068513 +DF Empress 6079 #Pine Drive Big Sky AMF
KAF Miss Jetliner 641 1B4

BW EPD	WW EPD	YW EPD	SC EPD	MILK EPD	MARB EPD	REA EPD
+0.9	+33	+65	-.34	+24	+.45	+.29

636 is maternal sister to the cow selling as Lot 14 and represents a great deal of maternal power. This cow is moderate in size with a great look from the side. She is correctly structured and deep flanked and offers a variety of mating options. As a yearling, 636 posted ratios of 108 for IMF and 110 for REA when evaluated by ultrasound.

SWEAN	SPEEDLOT	SGRID	\$BEEF
+24.78	+11.61	+32.63	+35.63

• Tested negative for NH. No carrier ancestors for AM.

Lot 24A Bull calf born 2/13/2009, tattoo 9018, by GAR Predestined. BW 82 lbs.

25 J&J Blackbird 6755

CALVED: 3/20/2006 • COW: 15311564 • TATTOO: 6755

#+HA Image Maker 0415 AMF #Hero 6267 of RR 2418
BA Image Maker 3267 HA Rito Blackcap 9038
14794697 BA Juanada of RR 9186 RR Billy The Kid 6419
BA Juanada of RR 7159

+EXAR Merit 216 #Bon View New Design 1407 AMF
Blackbird of RR 4666 Dixie Erica of RR 7530
15103507 Blackbird of RR 1925 HA 2041 Traveler 5016
Blackbird of RR 5611

BW EPD	WW EPD	YW EPD	SC EPD	MILK EPD	MARB EPD	REA EPD
+1.0	+47	+87		+27	+.10	+.00

A solid female in terms of size, genetic profile, udder quality and level of maternal function, 6755 is another female that descends from the Rollin Rock herd and is doing a great job with her natural heifer calf at side by Raven.

SWEAN	SPEEDLOT	SGRID	\$BEEF
+28.33	+27.34	+12.93	+34.97

Lot 25A Heifer calf born 2/11/2009, tattoo 9014, by BC 7022 Raven 7965. BW 83 lbs.

26 GAR 6I6 Rito 762 AMF

CALVED: 8/13/2002 • COW: 14222301 • TATTOO: 762

#DHD Traveler 6807 AMF #QAS Traveler 23-4 AMF
Rito 616 of 4B20 6807 AMF #Bemindful Maid DHD 0807
#12530601 +Rita 4B20 of 0FB1 Bando #Tehama Bando 155 AMF
+Rita 0FB1 of 5H11 Fullback

#Finks 5522-6148 #Emulation N Bar 5522
GAR 6148 Emulation 2400 Finks Proud Formera 614
+13724221 +GAR 6807 Traveler 504 #DHD Traveler 6807 AMF
+GAR Scotch Cap 309

BW EPD	WW EPD	YW EPD	SC EPD	MILK EPD	MARB EPD	REA EPD
+0.5	+46	+85	-.05	+19	+.42	+.36

762 is a long, deep and powerful cow by the legendary 6I6. Her dam traces back to the great Scotch Cap 309, who is known for producing great females. In a contemporary group of 37, 762 ratioed 104 for weaning weight, 101 for yearling weight, 100 for IMF and 116 for REA. She produced six grade one embryos in her only flush. Offered by Black Gold Angus.

SWEAN	SPEEDLOT	SGRID	\$BEEF
+28.03	+25.76	+30.37	+52.28

• Bred AI 4/13/2009 to GAR Predestined.

27

A Cross Lass A601

CALVED: 2/02/2006 • COW: 15461800 • TATTOO: A601

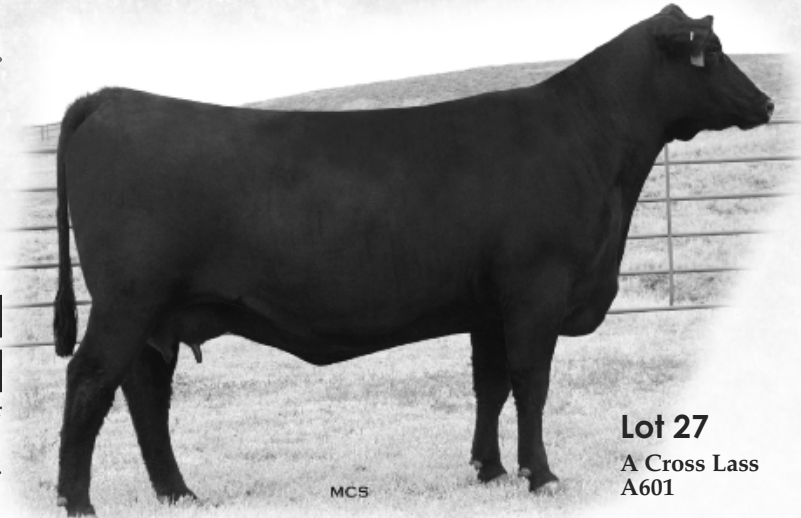
#Northern Improvement 4480 GF AMF #TC Stockman 365
 EXAR Lutton 1831 AMF Blackcap of RR 5367
 14035047 EXAR Saras Dream 9809 #A&B Yukon 7150 AMF
 +Saras Dream
 #N Bar Emulation EXT AMF #Emulation N Bar 5522
 PAF Lass 8532 N Bar Primrose 2424
 13084857 RR 2100 Lass 993H #Rito 2100 GDAR
 Ankony Vita Lass 493H

BW EPD	WW EPD	YW EPD	SC EPD	MILK EPD	MARB EPD	REA EPD
-0.5	+48	+89	-1.15	+22	+0.26	-0.24

SWEAN	SPEEDLOT	SGRID	SBEFF
+28.95	+28.93	+15.09	+36.92

This attractive Lutton daughter and EXT granddaughter is very long bodied. She ranks in the top 4% of Angus dams for BW and top 10% for YW. Offered by A-Cross Ranch.

Lot 27A Heifer calf born 3/16/2009, tattoo A994, by J&J Double Take 550. BW 82 lbs.



Lot 27
A Cross Lass
A601

MCS

28

3C Basin Dateline 5061 AMF

CALVED: 4/30/2005 • COW: 15275683 • TATTOO: 5061

#Basin Max 602C AMF #GT Maximum AMF
 Deer Creek Basin Max 1107 #Basin Eline Erica 315U
 +14125955 Deer Creek Erica 132 #Emulation N Bar 5522
 DC Piere 170
 #Connealy Dateline #DHD Traveler 6807 AMF
 PAF 4326 Dateline F070 #Eila Eila of Conanga AMF
 13814769 +GAR 6807 Traveler 4326 #DHD Traveler 6807 AMF
 +GAR Bando 452

BW EPD	WW EPD	YW EPD	SC EPD	MILK EPD	MARB EPD	REA EPD
+1.0	+38	+67	+2.9	+16	+0.34	-0.06

SWEAN	SPEEDLOT	SGRID	SBEFF
+25.36	+11.67	+22.94	+25.96

A very nice pair of cattle selling here. 5061 was selected from the Bill McIntosh herd in his 2006 sale. Moderate framed, wide bodied and deep ribbed, this cow is pretty uddered and super sound. 5061 offers a variety of mating options for show cattle or purebred seedstock and has a great looking heifer calf at side by J&J 7118. Her first calf had a 119 ratio for IME.

• Tested AM free.

Lot 28A Heifer calf born 3/24/2009, tattoo 9053, by J&J Future Direction 7118. BW 75 lbs.

29

J&J Eriskay 6707

CALVED: 3/02/2006 • COW: 15321021 • TATTOO: 6707

#Connealy Timeline #Connealy Dateline
 Connealy Danny Boy AMF #Enchants Fortune Conanga6127
 13966936 Energy of Conanga 4851 #Hoff Heartland SC 456
 #Dividends Envy of Conanga
 #Papa Equator 2928 AMF #Papa Power 096
 Papa Eriskay 4261 CDJ #Papa Envious Blackbird 8849
 14856293 +Papa Intense Eriskay M152 #Papa Rito T Intense DHD 6844
 #Eriskay DHD 6815

BW EPD	WW EPD	YW EPD	SC EPD	MILK EPD	MARB EPD	REA EPD
+1.3.2	+49	+88		+12	+0.15	+0.38

SWEAN	SPEEDLOT	SGRID	SBEFF
+21.42	+27.56	+23.13	+40.35

The bull calf at side of 6707 is a genuine herd sire prospect with tremendous width and muscle shape. 6707's twin sister sells as Lot 30.

Lot 29A Bull calf born 2/05/2009, tattoo 9009, by Rito 112 of 2536 Rito 616. BW 89 lbs.

30

J&J Eriskay 6706

CALVED: 3/02/2006 • COW: 15321020 • TATTOO: 6706

#Connealy Timeline #Connealy Dateline
 Connealy Danny Boy AMF #Enchants Fortune Conanga6127
 13966936 Energy of Conanga 4851 #Hoff Heartland SC 456
 #Dividends Envy of Conanga
 #Papa Equator 2928 AMF #Papa Power 096
 Papa Eriskay 4261 CDJ #Papa Envious Blackbird 8849
 14856293 +Papa Intense Eriskay M152 #Papa Rito T Intense DHD 6844
 #Eriskay DHD 6815

BW EPD	WW EPD	YW EPD	SC EPD	MILK EPD	MARB EPD	REA EPD
+1.3.2	+49	+88		+12	+0.26	+0.24

SWEAN	SPEEDLOT	SGRID	SBEFF
+21.42	+27.56	+25.10	+44.96

The pair of twin sisters selling as Lots 29 and 30 are moderate in frame size, offer a big birth to yearling EPD spread and have great calves sired by 112. Make sure to find these on sale day!

Lot 30A Heifer calf born 2/04/2009, tattoo 9008, by Rito 112 of 2536 Rito 616. BW 76 lbs.

31

BlackJacks Bardolene 6003

CALVED: 3/10/2006 • COW: 15404209 • TATTOO: 6003

#BR Midland AMF #Twin Valley Precision E161 AMF
 EXAR Numerical 3919 AMF BR Royal Lass 7036-19
 +14390643 +Leachman Erica 6267 #Leachman Explorer AMF
 Leachman Erica 0025
 #Basin Max 602C AMF #GT Maximum AMF
 Basin Bardolene 729L #Papa Envious Blackbird 8849
 13850546 Basin Bardolene 587G #N Bar Emulation EXT AMF
 Basin Bardolene 80E

BW EPD	WW EPD	YW EPD	SC EPD	MILK EPD	MARB EPD	REA EPD
+0.9	+45	+87	+1.14	+16	+0.33	+0.18

SWEAN	SPEEDLOT	SGRID	SBEFF
+24.47	+28.10	+20.54	+39.60

Very stout cow with a great deal of bone, width and shape.

Lot 31A Heifer calf born 2/28/2009, tattoo 9045, by EXAR New Look 2971. BW 78 lbs.

More Spring Calvers



MCS

Lot 32
Jacs Forever Lady 5216

32 Jacs Forever Lady 5216

CALVED: 2/08/2005 • COW: +15044153 • TATTOO: 5216

#Emulation N Bar 5522
N Bar Emulation EXT AMF
#10776479

#Emulation 31 FX
Ankony 8F78 Lass 8E275
#Emulation 31 FX
Primrose N Bar 9962

#DHD Traveler 6807 AMF
Rocky Mt Forever Lady 715
+12978876

#QAS Traveler 23-4 AMF
#Bemindful Maid DHD 0807
#Rito 2100 GDAR
#LT Forever Lady 395 GDAR

BW EPD	WW EPD	YW EPD	SC EPD	MILK EPD	MARB EPD	REA EPD
+1.7	+34	+67	-.37	+19	+.08	-.04

5216 was selected out of a past Jac's Ranch sale as a calf and descends from a solid line of foundation cows. Moderate in frame size and long bodied, she has typical EXT udder quality and maternal ability. With tremendous depth of flank and a feminine front end, this is a cow that could be mated successfully for a wide variety of markets.

\$WEAN	\$FEEDLOT	\$GRID	\$BEEF
+22.55	+13.09	+13.85	+20.40

Lot 32A Heifer calf born 3/29/2009, tattoo 9055, by J&J Future Direction 7118. BW 67 lbs.

33 Black Gold Forever Lady 7045 AMF

CALVED: 9/12/2007 • COW: +16280484 • TATTOO: 7045

#Sitz Traveler 8180 AMF
SAV 8180 Traveler 004 AMF
#13512009

#GDAR Traveler 71 AMF
Sitz Everelda Entense 1137
#AAR New Trend
SVF Forever Lady 57D

#CA Future Direction 5321 AMC
XXG Forever Lady F80 X18 AMF
+14764545

#GAR Precision 1680 AMC
CA Miss Power Fix 308 AMF
#DHD Traveler 6807 AMF
+TRA Simply Forever 549

BW EPD	WW EPD	YW EPD	SC EPD	MILK EPD	MARB EPD	REA EPD
+3.2	+46	+86		+25	+.23	+.14

7045 is by the legendary female sire SAV 8180 Traveler 004, who is known to sire moderate framed, easy fleshing, fertile females with superior udder quality and optimum milk. Her maternal grandam is from the mating of 6807 and the \$100,000 Simply Forever 549. Offered by Black Gold Angus.

\$WEAN	\$FEEDLOT	\$GRID	\$BEEF
+23.54	+26.74	+13.80	+37.16

- Tested AM and NH free.
- Bred AI 2/07/2009 to Bon View New Design 878. Safe in calf.

Lots 34, 35 and 36 are three extremely powerful and well balanced females by the popular Limestone, Conley and Express herd sire BC 7022 Raven 7965. The dam of these three flush sisters, Blackbird 1262, was produced in the joint embryo program of Limestone, LLC and Black Gold Angus. 1262



BC 7022 Raven 7965 Sire of Choice Lots 34, 35 & 36

was the top selling heifer from the Daltons on the Sycamore 2003 sale and also served as a donor in the Daltons and Mirapaso Farms herds. Two full sisters to these three heifers sold in the 2008 Limestone sale for \$20,000 and \$9,000. Two heifer pregnancies from 1262 sold in the 2007 Limestone sale for \$10,500 each. A maternal sister by SAV 8180 Traveler 004 sold in the 2008 J&J sale for \$7,000 to SaddleRiver Trust. Offered by Black Gold Angus.

- Each of these three heifers has been tested AM and NH free.
- Selling the top two choices of these three Raven daughters.

Pedigree for Buyer's Choice Lots 34, 35 & 36:

BC Marathon 7022 AMF	OCC Kirby 633K
BC 7022 Raven 7965 AMF	Gibbet Hill Mignonne E37
15034593	#OCC Bonanza 880B
OCC Blackbird 796F	OCC Blackbird 779A
#GAR Precision 1680 AMC	#Tehama Bando 155 AMF
Daltons Blackbird 1262 AMF	9J9 GAR 856
+14024399	#DHD Traveler 6807 AMF
OCC Blackbird 833E	OCC Blackbird 778A

34 Black Gold Blackbird 8005

CALVED: 2/07/2008 • COW: +15975163 • TATTOO: 8005

BW EPD	WW EPD	YW EPD	SC EPD	MILK EPD	MARB EPD	REA EPD
+3.4	+44	+85	-.47	+21	+1.10	+1.62

BW 68 lbs. YW ratio 103. Adj. yearling REA 14.2 sq. in., ratio 115.

\$WEAN	\$FEEDLOT	\$GRID	\$BEEF
+21.44	+26.51	+18.70	+45.98

- Breeding information available sale day.

35 Black Gold Blackbird 8006

CALVED: 2/09/2008 • COW: +15975164 • TATTOO: 8006

BW EPD	WW EPD	YW EPD	SC EPD	MILK EPD	MARB EPD	REA EPD
+2.7	+43	+87	-.47	+21	+1.09	+1.50

BW 65 lbs. WW ratio 101. YW ratio 110. Adj. yearling REA 13.6 sq. in., ratio 105.

\$WEAN	\$FEEDLOT	\$GRID	\$BEEF
+21.60	+28.87	+17.07	+47.23

- Breeding information available sale day.

36 Black Gold Blackbird 8007

CALVED: 2/10/2008 • COW: +15975165 • TATTOO: 8007

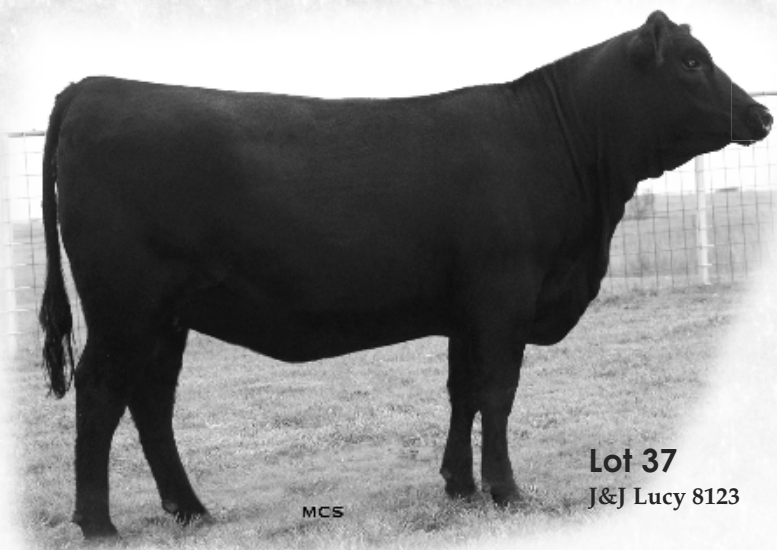
BW EPD	WW EPD	YW EPD	SC EPD	MILK EPD	MARB EPD	REA EPD
+2.8	+43	+81	-.47	+21	+1.17	+1.42

BW 61 lbs. IMF ratio 100. Adj. yearling REA 11.4 sq. in., ratio 99.

\$WEAN	\$FEEDLOT	\$GRID	\$BEEF
+23.23	+23.00	+21.45	+44.17

- Breeding information available sale day.

Spring Bred Heifers



Lot 37
J&J Lucy 8123

MCS

37

J&J Lucy 8123

CALVED: 2/14/2008 • COW: +16168387 • TATTOO: 8123

BW EPD	WW EPD	YW EPD	SC EPD	MILK EPD	MARB EPD	REA EPD
+3.0	+43	+78	+24	+17	+44	+46

\$WEAN	\$FEEDLOT	\$GRID	\$BEEF
+22.35	+20.12	+23.68	+52.39

BW 75 lbs. Adj. WW 677 lbs. Adj.
YW 1002 lbs. Adj. IMF 5.83%.
Adj. REA 12.8 sq. in.

8123 and her flush sister selling as Lot 38 are produced by a foundation female selected from the Pfeiffer Farms dispersion in 2001. A big, deep, broody, correct yearling heifer with outstanding individual performance, 8123 has excelled her contemporaries throughout the past year in terms of curve-bending growth and body composition.

• Breeding information available sale day.

Pedigree for Lots 37 & 38:

#Twin Valley Precision E161 AMF	#GAR Precision 1680 AMC
BR Midland AMF	+WCC Blackcap C9 R
#13898124	#+SAF Neutron AMF
BR Royal Lass 7036-19	#SAF Royal Lass 7036
#Alberda Traveler 416 AMF	#DHD Traveler 6807 AMF
PAF 861 AT F011	Alberda Queen Kimberly 222
13814752	#N Bar Emulation EXT AMF
PAF 328 EXT 861	#PAF Miss Lucy 328

38

J&J Lucy 8120

CALVED: 2/21/2008 • COW: +16168384 • TATTOO: 8120

BW EPD	WW EPD	YW EPD	SC EPD	MILK EPD	MARB EPD	REA EPD
+3.0	+43	+78	+24	+17	+48	+10

\$WEAN	\$FEEDLOT	\$GRID	\$BEEF
+22.35	+20.12	+27.05	+44.57

BW 70 lbs. Adj. WW 461 lbs. Adj.
YW 807 lbs. Adj. IMF 6.45%. Adj.
REA 9.3 sq. in.

• Breeding information available sale day.

39

J&J Blackbird 815

CALVED: 2/02/2008 • COW: +16168368 • TATTOO: 815

Boyd On Target 1083 AMF	#+SAF 598 Bando 5175 AMF
Stevenson Moneymaker R185 AMF	+Boyd Forever Lady 7095
15003238	VDAR Ambush 2478
#Stevenson Clova Pride L888 AMF	Stevenson Clova Pride 712H
EXAR Lutton 1831 AMF	#+Northern Improvement 4480 GF AMF
J&J Blackbird 536	EXAR Saras Dream 9809
+15131148	#N Bar Emulation EXT AMF
PAF Blackbird 6665	PAF Blackbird 4170

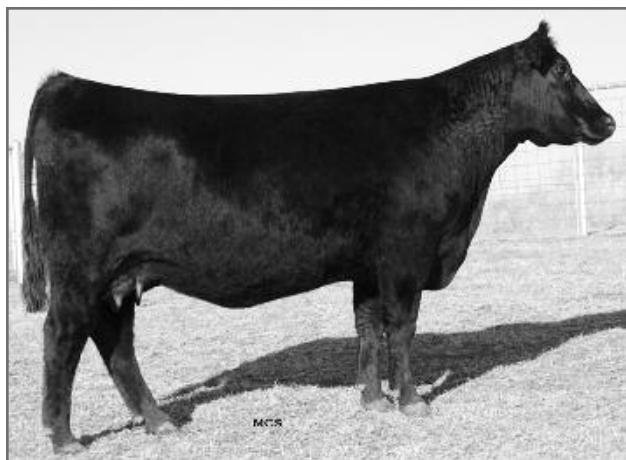
BW EPD	WW EPD	YW EPD	SC EPD	MILK EPD	MARB EPD	REA EPD
+2.6	+55	+103		+21	+26	+00

\$WEAN	\$FEEDLOT	\$GRID	\$BEEF
+25.02	+40.42	+13.65	+38.79

A big ribbed cow prospect sired by Moneymaker, this paternal sister to Lot 17 is also an embryo sib to the high selling feature lots from our Holiday Wish List Sale last December, when four sisters to 815 sold to Chris Cox, EXAR, Pollard Farms and Ratcliff Ranch at an average value of \$3,100. This female represents one of the most "tried and true" foundation cow families in our operation. The dam, J&J Blackbird 536, was the high selling cow at \$10,800 going to Silver Shade Ranch in our 2008 sale.

• BW 76 lbs. Adj. WW 657 lbs. Adj. YW 828 lbs. Adj. IMF 4.85%. Adj. REA 9.5 sq. in.

• Breeding information available sale day.



J&J Blackbird 536
Donor dam of Lot 39
... selected by Silver
Shade Ranch in the
2008 J&J sale



J&J Blackbird 816
Flush sister to Lot 39

MCS

Spring Bred Heifers



Dixie Erica of RR 7530 "Bob" Maternal grandam of Lot 40

40 J&J Dixie Erica 868

CALVED: 3/21/2008 • COW: +16233644 • TATTOO: 868

#Emulation N Bar 5522 #Emulation 31 FX
 N Bar Emulation EXT AMF Ankony 8F78 Lass 8F275
 #10776479 N Bar Primrose 2424 #Emulation 31 FX
 Primrose N Bar 9962

#DHD Traveler 6807 AMF #QAS Traveler 23-4 AMF
 J&J 6807 Dixie 012 #Bemindful Maid DHD 0807
 +13730176 Dixie Erica of RR 7530 #E&B 1483 Scotchman 5041
 #Dixie Erica of RR 3506

BW EPD	WW EPD	YW EPD	SC EPD	MILK EPD	MARB EPD	REA EPD
+2.1	+40	+78	-17	+17	-.07	+0.01

SWEAN	SFEEDLOT	SGRID	SBEFF
+22.16	+21.23	+9.06	+31.34

The Dixie Ericas from Rollin Rock have established an outstanding reputation in the Angus breed, as has the use of EXT on 6807-sired females. This heifer descends from one of our foundation donors, "Bob" 7530, and should be an excellent cow in production.

- BW 75 lbs. Adj. WW 749 lbs. Adj. YW 923 lbs. Adj. IMF 5.36%. Adj. REA 8.4 sq. in.
- Breeding information available sale day.

Pedigree for Lots 41, 42 & 43:

#+Papa Power 096 #Cottontail Maternal Power464
 Papa Equator 2928 AMF Blackbird DHD 2816
 #11788302 #Papa Envious Blackbird 8849 Papa Rito Traveler 4807
 Envious Blackbird DHD 5848

#Bon View New Design 1407 AMF #B/R New Design 036 AMF
 PF 1407 Miss Wix 2468 Bon View Pride 664
 +14322084 +PF 365 Miss Wix 9202 #TC Stockman 365
 #GDAR Miss Wix 3325

A unique pedigree, produced by a powerful 1407 daughter from the Miss Wix cow family. These heifers offer tremendous bone and growth performance. Each is being AI bred to Northern Improvement—the Equator x Northern Improvement mating has proven very successful (this is the mating that produced the dam of the Reserve Champion Pen of Three Angus Bulls at the 2009 National Western). Don't overlook these heifers. There is a lot of potential represented here for those who want to make powerful cattle with look and quality.

41 J&J Miss Wix 8116

CALVED: 1/23/2008 • COW: +16237881 • TATTOO: 8116

BW EPD	WW EPD	YW EPD	SC EPD	MILK EPD	MARB EPD	REA EPD
+5.2	+48	+93		+25	+31	+09

BW	WW	YW	IMF	REA
80 lbs. Adj.	594 lbs. Adj.	898 lbs. Adj.	5.87%. Adj.	8.9 sq. in.

SWEAN	SFEEDLOT	SGRID	SBEFF
+18.33	+32.94	+22.94	+54.77

- Breeding information available sale day.

42 J&J Miss Wix 8113

CALVED: 1/23/2008 • COW: +16237880 • TATTOO: 8113

BW EPD	WW EPD	YW EPD	SC EPD	MILK EPD	MARB EPD	REA EPD
+5.2	+48	+93		+25	+32	+11

BW	WW	YW	IMF	REA
75 lbs. Adj.	461 lbs. Adj.	829 lbs. Adj.	6.09%. Adj.	9.1 sq. in.

SWEAN	SFEEDLOT	SGRID	SBEFF
+18.33	+32.94	+24.60	+52.79

- Breeding information available sale day.

43 J&J Miss Wix 8111

CALVED: 1/23/2008 • COW: +16237879 • TATTOO: 8111

BW EPD	WW EPD	YW EPD	SC EPD	MILK EPD	MARB EPD	REA EPD
+5.2	+48	+93		+25	+29	+11

BW	WW	YW	IMF	REA
70 lbs. Adj.	535 lbs. Adj.	690 lbs. Adj.	5.49%. Adj.	9.1 sq. in.

SWEAN	SFEEDLOT	SGRID	SBEFF
+18.33	+32.94	+26.32	+44.99

- Breeding information available sale day.



Real-time bidding will be available via the internet for the J&J Production Sale. Live audio and live video will allow buyers to bid on animals just as if they were present at the auction. Buyers must create an account prior to the sale. Please visit www.LiveAuctions.tv to create an account. Follow the instructions there to create your account, or contact Brad Fahrmeier at (816) 392-9241, or e-mail brad@LiveAuctions.tv



MCS

Lot 44 J&J Empress 8915

44

J&J Empress 8915

CALVED: 11/01/2008 • COW: +16285849 • TATTOO: 8915

EXAR Pit Boss 409 AMF
+14682821

EXAR Sudden Impact 1537 AMF
WK Winnie 7305

#Northern Improvement 4480 GF AMF
+BLR Blushing Pride 9097
#Krugerrands Moneyline
WK Winnie 5460

EXAR Empress 7630
+12796814

#Krugerrands Moneyline
+DF Empress 6079

#Krugerrand of Donamere 490
Ankony 5G00 Blackbird GC017
#Pine Drive Big Sky AMF
KAF Miss Jetliner 641 1B4

BW EPD	WW EPD	YW EPD	SC EPD	MILK EPD	MARB EPD	REA EPD
+1.8	+1.47	+1.84	-1.13	+1.11	+1.12	+1.26

This November Pit Boss daughter is the best fall-born show heifer

SWEAN	SPEEDLOT	SGRID	\$BEEF
+23.77	+24.40	+20.78	+38.16

prospect in the sale offering. Descending from the power cow DF Empress 6079 and sporting a pedigree full of show ring success on both the top and bottom side, this heifer has the bone, width and look to compete and should make an excellent cow when her show career has ended.

- BW 68 lbs. Adj. WW 608 lbs.
- Sells open.



EXAR Pit Boss 409 Sire of Lot 44

Fall Empress Features



Lot 45
J&J Empress 897



Lot 46
J&J Empress 894

45 J&J Empress 897

CALVED: 10/09/2008 • COW: +16288233 • TATTOO: 897

BW 76 lbs. Adj. WW 649 lbs.
• Sells open.

46 J&J Empress 894

CALVED: 10/01/2008 • COW: +16288232 • TATTOO: 894

BW 65 lbs. Adj. WW 705 lbs.
• Sells open.

47 J&J Empress 8900

CALVED: 10/14/2008 • COW: +16288231 • TATTOO: 8900

#Connealy Lead On AMF
Connealy Onward AMF
14216491 Altune of Conanga 6104

##Krugerrands Moneyline
EXAR Empress 7630
+12796814 +DF Empress 6079

#Connealy Leadtime AMF
Eligence Plus of Conanga
#GAR Traveler 1489 AMF
Avalon 1418 of Conanga 6276

#Krugerrand of Donamere 490
Ankony 5G00 Blackbird GC017
#Pine Drive Big Sky AMF
KAF Miss Jetliner 641 1B4

BW EPD	WW EPD	YW EPD	SC EPD	MILK EPD	MARB EPD	REA EPD
+1.4	+1.48	+1.95	+1.33	+1.16	+1.17	+1.45

BW 77 lbs. Adj. WW 571 lbs.
• Sells open.

SWEAN	SPEEDLOT	SGRID	SBEFF
+23.63	+34.97	+22.33	+47.62

48 J&J Empress 8910

CALVED: 10/22/2008 • COW: +16285850 • TATTOO: 8910

Schurrtop MC
Schurrtop MC 2500 AMF
14840227 Schurrtop RS 1413 2153

##Krugerrands Moneyline
EXAR Empress 7630
+12796814 +DF Empress 6079

#Papa Equator 2928 AMF
Schurrtop 1483 9024
Brooks Schurr Trend
Ryans Schurrtop 2125

#Krugerrand of Donamere 490
Ankony 5G00 Blackbird GC017
#Pine Drive Big Sky AMF
KAF Miss Jetliner 641 1B4

BW EPD	WW EPD	YW EPD	SC EPD	MILK EPD	MARB EPD	REA EPD
+1.3.0	+1.42	+1.76	+1.01	+1.19	+1.02	+1.28

BW 65 lbs. Adj. WW 613 lbs.
• Sells open.

SWEAN	SPEEDLOT	SGRID	SBEFF
+22.81	+18.59	+14.19	+29.60

These maternal sisters to Lot 44 represent unique pedigrees as cow prospects, and all are stamped with the look, stoutness and visual quality you would expect from their Moneyline x 6079 dam. These heifers were bred for look and also include a great deal of long-term cow potential.

Lots 45, 46 and 47 are flush sisters by Connealy Onward; Lot 48 is sired by MC 2500.

49

J&J Racquel 8901

CALVED: 10/14/2008 • COW: 16285854 • TATTOO: 8901

TC Total 410 AMF
14844711

#Bon View New Design 208 AMF
+TC Erica Eileen 2047

#E&B 1483 Scotchman 5041

J&J Racquel 5129
+15352656

#B/R New Design 036 AMF
#Bon View Erica 443
#Twin Valley Precision E161 AMF
#+TC Erica Eileen 5116

#RR 9440 Scotch Cap 1483 AMF
Lady 183 Traveler 334
#N Bar Emulation EXT AMF
+DF Empress 6079

BW EPD	WW EPD	YW EPD	SC EPD	MILK EPD	MARB EPD	REA EPD
+1.6	+56	+101		+28	+33	+35

Another descendant of 6079, this TC Total daughter is the natural calf out of a tremendous three year old that is an own daughter of Scotchman 5041. Exceptional birth to yearling EPD spread with a YW EPD ranking in the breed's best 5% of non-parent females. 8901 also ranks in the best 15% of non-parent females for REA and \$Beef.

- BW 65 lbs. Adj. WW 734 lbs.
- Sells open.

SWEAN	SPEEDLOT	\$GRID	\$BEEF
+29.67	+37.94	+25.90	+52.58



OSU 6079 Racquel 8176 Dam of Lots 14 & 24; maternal grandam of Lots 15 & 49
"... at the very least, one of the most powerful and productive direct daughters ever produced by the immortal DF Empress 6079."

50

J&J Rosetta 893

CALVED: 10/01/2008 • COW: 16291154 • TATTOO: 893

Rito 112 of 2536 Rito 616 AMF
#13793826

GAR Precision 2536 AMC

+EXAR New Look 2971 AMF

EXAR Rosetta 3376
15419374

+EXAR Rosetta 3426

#DHD Traveler 6807 AMF
+Rita 4B20 of 0FB1 Bando
#GAR Precision 1680 AMC
+GAR EXT 2104

#Bon View New Design 1407 AMF
N Bar Primrose 2424
#Twin Valley Precision E161 AMF
+TM Rosetta 801E

BW EPD	WW EPD	YW EPD	SC EPD	MILK EPD	MARB EPD	REA EPD
+2.7	+54	+99		+21		

This is the first natural calf produced by an outstanding New Look daughter purchased from KB Cattle Company. 893 is sound, long, deep and thick with a functional brood cow look. Her visual quality is backed by great individual performance and a YW EPD in the breed's best 10% of non-parent females. An outstanding cow in the making!

- BW 70 lbs. Adj. WW 716 lbs.
- Sells open.

SWEAN	SPEEDLOT	\$GRID	\$BEEF
+25.38	+36.68		



J&J Queen 6119
Maternal sister to Lot 51

51

J&J Steer 8906

CALVED: 10/16/2008 • STEER: Reg. N/A • TATTOO: 8906

BT Crossover 758N AMC
+14509685

BT Royal Pride 237G

##A&B Yukon 7150 AMF

J&J Queenie 9206
+13412890

C&C Queen 418

#GAR Precision 1680 AMC
CA Miss Power Fix 308 AMF
#+OSU 6T6 Ultra
BT Royal Pride 326A

#Krugerrand of Donamere 490
+A&B Queen 4173
Bando of Conanga 573
WK Queen 2147

Sired by a Denver Champion bull and produced by a cow that transmits show ring look and power, this purebred Angus steer prospect has great potential. A maternal sister was the Grand Champion Angus Heifer at the 2007 Tulsa State Fair Junior Show for Macy Griswold. Other maternal sisters sell as Lots 6A-B.



MCS

Lot 51
J&J Steer 8906

Herd Sire Prospect



MCS

Lot 52 J&J Alternative 8907

52

J&J Alternative 8907

CALVED: 10/16/2008 • BULL: 16285853 • TATTOO: 8907

#Northern Improvement 4480 GF AMF #TC Stockman 365
 EXAR Lutton 1831 AMF Blackcap of RR 5367
 14035047 EXAR Saras Dream 9809 #A&B Yukon 7150 AMF
 #N Bar Emulation EXT AMF +Saras Dream
 3F Jilt 4636of 5133 EXT #Emulation N Bar 5522
 +14899940 OSU 6807 Jilt 5133 N Bar Primrose 2424
 #DHD Traveler 6807 AMF
 #OSU 869B Jilt 130C

BW EPD	WW EPD	YW EPD	SC EPD	MILK EPD	MARB EPD	REA EPD
+1.4	+54	+97		+27	+22	-.05

BW 79 lbs. Adj. WW 859 lbs.

• Selling 1/2 semen interest and full possession.

\$WEAN	\$FEEDLOT	\$GRID	\$BEEF
+29.75	+34.64	+15.79	+40.99

Are you interested in a way to use solid, foundation brood cow pedigrees while getting curve-bending birth to yearling spread and improving the structural correctness, visual quality and eye appeal of your calves? If so, check out J&J Alternative 8907. He offers:

- Pedigree: Descends from Summitcrest Jilt M113, with both EXT and 6807 represented in the bottom side of his three-generation pedigree. Go back three more generations to find breed legends Traveler 23-4, Spur Emulous 1012 and Power Play. On the top side, his great-grandam is sired by EXT.
- Performance: Actual birth weight 79 pounds; adjusted weaning weight 859. His dam has progeny ratios on three natural calves of 98 at birth and 105 at weaning. He balances a low birth predictor of +1.4 with weaning and yearling EPDs in the best 10% of non-parent Angus bulls.
- Phenotype: Alternative is structurally flawless, long strided, parallel in his lines and deep flanked with shape, width and genuine composition. His mother is a model type Angus cow. His sire is one of the most prepotent Angus bulls in modern times in regard to siring hair, bone and the look required for show ring success.

*Thank you for your interest in the
 J&J Cattle Company
 Fourth Annual Spring Production Sale!*



Special thanks to these J&J sale sponsors:

Farm Credit, Enid, Oklahoma

Fred Slater, (580) 231-0666

Stillwater Milling Company

Rob Bauter, (405) 372-2766

Reproduction Enterprises, Inc.

Les Hutchens, (405) 377-8037



STILLWATER MILLING CO.

(405) 372-2766

(800) 364-1671

Address:

502 East Sixth Street

Stillwater, OK 74074

REPRODUCTION SERVICES

Embryo Transfer Fee Schedule

Flush fee \$325 in clinic

Flush fee \$300 on farm

Freeze fee \$100 / cow

Transfer fee \$ 60

Ultrasound Services

Carcass ultrasound \$17 / head

Fetal sexing \$20 / head

- ◆ On-farm services available
- ◆ No group too small

Call us about A.I. and palpation training schools.

Reproduction Enterprises, Inc.

908 N. Prairie Rd. Stillwater, OK 74075

1-866-REI-BULL 1-405-377-8037

Fax: (405) 377-4541

www.reproductionenterprises.com



J&J
CATTLE CO.
23001 N. Douglas
Orlando, OK 73073

First Class Mail
TIME-DATED: PLEASE DO NOT DELAY

FIRST CLASS
U.S. POSTAGE
PAID
PERMIT #1541
OKLA. CITY,
OKLAHOMA

LIVE ON THE INTERNET! LIVE AUDIO, VIDEO, BIDDING!
LiveAuctions.TV

www.jandjcattle.com

Fourth Annual Spring Production Sale

Saturday, May 30, 2009 • At the ranch, Orlando, Oklahoma

J&J Empress 8915



J&J Queen 890



J&J Lass 823



J&J Alternative 8907

